

Product datasheet for **RC208320**

ANKRD6 (NM_014942) Human Tagged ORF Clone

Product data:

Product Type:	Expression Plasmids
Product Name:	ANKRD6 (NM_014942) Human Tagged ORF Clone
Tag:	Myc-DDK
Symbol:	ANKRD6
Mammalian Cell Selection:	Neomycin
Vector:	pCMV6-Entry (PS100001)
E. coli Selection:	Kanamycin (25 ug/mL)



[View online »](#)

**ORF Nucleotide
Sequence:**

>RC208320 ORF sequence
 Red=Cloning site Blue=ORF Green=Tags(s)

TTTTGTAATACGACTCACTATAGGGCGGCCGGAATTCGTCGACTGGATCCGGTACCGAGGAGATCTGCC
 GCC**CGCATCGCC**

ATGAGCCAGCAAGATGCGGTGCTGCACCTTCAGAGCGCCTTCTCGTAGCTGCGTACAAAGGCCAAACAG
 AGAATGTGGTTTCAGCTCATCAACAAGGGCGCCAGGGTAGCGGTTACCAAGCATGGCCGGACTCCCCTGCA
 TCTTGCTGCCAATAAGGGCCATCTTCTGTGGTCCAGATCTTGCTGAAGGCTGGCTGCGACCTTGATGTC
 CAGGATGATGGGGACCAGACCGCCTTGACCGGGCCACAGTGGTGGGAACACGGAGATCATCGCGGCGC
 TCATCCACGAAGGGTGTGCCCTGGACAGACAAGACAAGGATGGGAATACAGCCTTGATGAAGCATCCTG
 GCATGGTTTCAGCCAGTCAGCCAAGCTGCTCGTTAAAGCAGGAGCCAACGTGCTTGCCAAGAACAAGGCG
 GGAACACAGCTCTGCACCTGGCCTGCCAGAACAGCCACTCCAGAGCACGCGCTCCTCTGCTGGCCG
 GGTCCCGCGCTGACCTCAAAAATAATGCAGGAGACACCTGTTTGACGTTGCTGCGCGCTATAATCACTT
 GTCATCATTAGGCTCCTCCTCACTGCTTCTGTTCTGTCCATGAAAAGAACCAGGCTGGAGACACAGCA
 CTTTCATGTTGCTGCTGCCCTAAATCACAGAAGGTGGCCAAAATCTTACTGGAAGCCGGAGCAGATACGA
 CCATTGTTAACAATGCAGGCCAGACTCCGCTGGAGACTGCCCGCTACCACAATAACCCGGGAAGTTGCTCT
 TCTCCTTACTAAAGCTCCCCAGGCTTTGCGCTTCAGTCGTGGGCGAAGCCTGAGGAAAAAGAGAGAGAGG
 CTCAAGGAAGAGAGGAGAGGCCAGTCTGTGCCAAGAGATGAGGTGGCCAAAGCAAGGGCAGTGTCTCAG
 CAGGAGACACCCCGAGCAGTGAACAGGCTGTGGCCAGAAAAGAAGAAGCCAGAGAAGAGTTCTCTGTCAGC
 CTCCCCAGAACCCAGAGCAAAGGATGACAGGAGGAGAAAGTCAAGGCCAAGGTGTCAGCGTTTTCTGAC
 CCCACCCACAGCCGACCAACAGCCTGGACACCAGAAGAACCTGCATGCTCATAATCACCTAAAAAGA
 GGAACAGGCATCGGTGTTTCATCCCCACCCCACTGAGTTTCAGGGCGTATCAGCTCTACAGCTTGA
 CCGGGGCAAGGATGGGAAAGTGATGCAGGCACCAATAAATGGTTGTCGATGTGAACCTCTAATCAACAAG
 CTGGAGAATCAGTTGGAGGCTACTGTGGAGGAGATAAAAGCAGAGCTGGGATCGGTTTCAGGACAAAATGA
 ATACAAAGCTGGGGCAGATGGAGAATAAGACCCAGCACCATAATGCGTGTGTTGGACAAGCTGATGGTTGA
 GCGACTTTCTGCAGAGAGGACGGAGTGCCTGAACCGCTGCAACAGCACTCAGACACAGAGAAGCATGAG
 GGGGAGAAACGACAGATATCCTTGGTGGATGAATAAAAACCTGGTGCATGTTAAAGATTGAGAATCTGG
 AGCAGAAGCTTTCTGGAGATTCTAGGGCTGCAGAGCTAAATCCACACCATCTACTTGTGTGGACCAATT
 AGTGGTGACTGCAGGTCCAGCAGCAGCTCCGACAGCTCCCCTCCAGTGGTTAGGCCAAAGAGAAGGCC
 CTCAACTCCACTGCTACCCAGAGACTCCAGCAGGAGCTGTCGTTCTGACTGTACAGGCTCCCAGCTGA
 GAAACGTCAAGGTCCAGACAGCCTTGTACCCATGAATGAGGCAGCCAGATCTGATCAGCAGGCTGGGCC
 CTGCGTCAACAGAGGCACTCAAACCTAAGAAGTCTGGGAAGAGTGGGCCAACAAAGGCATCGTGCCAGCAA
 CCCGCAGCCAGCAGCACCTGTGGGCAGCCGCCACCAGCCACAGGCAGCGAGCAGACTGGCCCTCACATTC
 GGGACACCTCCCAAGCTCTGGAGCTTACCCAGTATTTTTTTGAGGCTGTTTCTACCCAGATGGAAAAGTG
 GTATGAAAGGAAGATTGAAGAAGCACGAAGCCAAGCCAATCAGAAAAGCCAGCAAGATAAGGCTACATTG
 AAGGAACACATTAAGTTTGAAGAGGAACCTGCCAAACTAAGGACTAGGGTGCAGAAGGAAAAAT

ACGCGTACGCGGCCGCTCGAGCAGAACTCATCTCAGAAGAGGATCTGGCAGCAAATGATATCCTGGATT
 ACAAGGATGACGACGATAAGGTTTAA

Protein Sequence: >RC208320 protein sequence
 Red=Cloning site Green=Tags(s)

```
MSQQDAVAALSERLLVAAYKGQTEENVVQLINKGARVAVTKHGRTPLHLAANKGHLPVVQILLKAGCDLVD
QDDGDQ TALHRATVVGNTEIIAALIHEGCALDRQDKGN TALHEASWHGFSQSAKLLVKAGANVLAKNKA
GNTALHLACQNSHSQSTRVLLLAGSRADLKNAGDTC LHVAARYNHL SIIRLLL TAFCSVHEKNQAGDTA
LHVAAALNHKKVAKILLEAGADTTIVNAGQTPLETARYHNNPEVALLLTKAPQVLRFSRGRSLRKKRER
LKEERRAQSVPRDEVAQSKGVSAGDTPSSEQAVARKEEAREEFLSASPEPRAKDDRRRKRSPKVSASFSD
PTPPADQQPQHQNHLHAHNHPKKRNRHRCSSPPPPHEFRAYQLYTLYRGKDGKVMQAPINGCRCEPLINK
LENQLEATVEEIKAE LGSVQDKMNTKLGQ MENKTQH QMRVLDKLMVERLSAERTECLNRLQQHSDTEKHE
GEKRQISLVDELKTWMLKIQNLEQKLSGDSRACRAKSTPSTCVDQLVVTAGPAAASDSSPPVVRPKEKA
LNSTATQRLQQLSSSDCTGSR LRNVKVTALLPMNEAARSDQQAGPCVNRGTQTKKSGKSGPTRHRAQQ
PAASSTCGQPPPATGSEQTGPHIRDTSQALEL TQYFFEAVSTQMEKWYERKIEEARSQANQKAQQDKATL
KEHIKSLEEELAKLRTRVQKEN
```

TRTRPLEQKLI SEEDLAANDILDYKDDDDKV

Chromatograms: https://cdn.origene.com/chromatograms/mk6689_b01.zip

Restriction Sites: SgfI-MluI

Cloning Scheme:

Cloning sites used for ORF Shuttling:



* The last codon before the Stop codon of the ORF

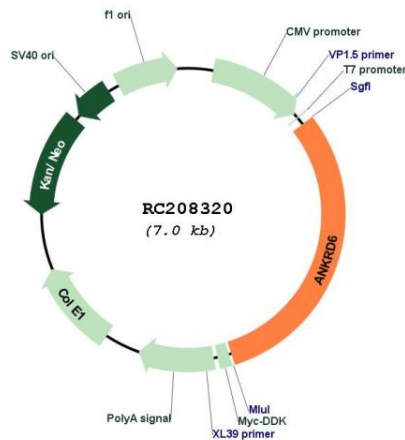
ACCN: NM_014942

ORF Size: 2166 bp

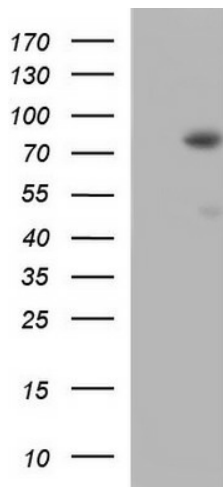
OTI Disclaimer: The molecular sequence of this clone aligns with the gene accession number as a point of reference only. However, individual transcript sequences of the same gene can differ through naturally occurring variations (e.g. polymorphisms), each with its own valid existence. This clone is substantially in agreement with the reference, but a complete review of all prevailing variants is recommended prior to use. [More info](#)

OTI Annotation: This clone was engineered to express the complete ORF with an expression tag. Expression varies depending on the nature of the gene.

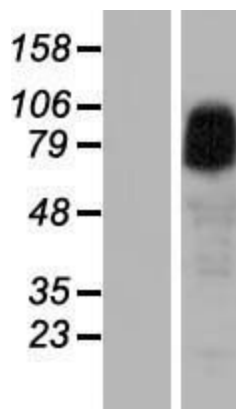
Components:	The ORF clone is ion-exchange column purified and shipped in a 2D barcoded Matrix tube containing 10ug of transfection-ready, dried plasmid DNA (reconstitute with 100 ul of water).
Reconstitution Method:	<ol style="list-style-type: none"> 1. Centrifuge at 5,000xg for 5min. 2. Carefully open the tube and add 100ul of sterile water to dissolve the DNA. 3. Close the tube and incubate for 10 minutes at room temperature. 4. Briefly vortex the tube and then do a quick spin (less than 5000xg) to concentrate the liquid at the bottom. 5. Store the suspended plasmid at -20°C. The DNA is stable for at least one year from date of shipping when stored at -20°C.
RefSeq:	<u>NM_014942.2</u> , <u>NP_055757.2</u>
RefSeq Size:	5340 bp
RefSeq ORF:	2169 bp
Locus ID:	22881
UniProt ID:	<u>Q9Y2G4</u>
Cytogenetics:	6q15
Domains:	ANK
MW:	79.5 kDa
Gene Summary:	Recruits CKI-epsilon to the beta-catenin degradation complex that consists of AXN1 or AXN2 and GSK3-beta and allows efficient phosphorylation of beta-catenin, thereby inhibiting beta-catenin/Tcf signals.[UniProtKB/Swiss-Prot Function]

Product images:


Circular map for RC208320



HEK293T cells were transfected with the pCMV6-ENTRY control (Cat# [PS100001], Left lane) or pCMV6-ENTRY ANKRD6 (Cat# RC208320, Right lane) cDNA for 48 hrs and lysed. Equivalent amounts of cell lysates (5 ug per lane) were separated by SDS-PAGE and immunoblotted with anti-ANKRD (Cat# [TA590522]). Positive lysates [LY414908] (100ug) and [LC414908] (20ug) can be purchased separately from OriGene.



Western blot validation of overexpression lysate (Cat# [LY414908]) using anti-DDK antibody (Cat# [TA50011-100]). Left: Cell lysates from untransfected HEK293T cells; Right: Cell lysates from HEK293T cells transfected with RC208320 using transfection reagent MegaTran 2.0 (Cat# [TT210002]).