

## Product datasheet for RC208317

### PTOV1 (NM\_017432) Human Tagged ORF Clone

#### Product data:

**Product Type:** Expression Plasmids  
**Product Name:** PTOV1 (NM\_017432) Human Tagged ORF Clone  
**Tag:** Myc-DDK  
**Symbol:** PTOV1  
**Synonyms:** ACID2; PTOV-1  
**Mammalian Cell Selection:** Neomycin  
**Vector:** pCMV6-Entry (PS100001)  
**E. coli Selection:** Kanamycin (25 ug/mL)  
**ORF Nucleotide Sequence:** >RC208317 representing NM\_017432  
 Red=Cloning site Blue=ORF Green=Tags(s)

TTTTGTAATACGACTCACTATAGGGCGCCGGGAATTCGTCGACTGGATCCGGTACCGAGGAGATCTGCC  
 GCC**CGATCGCC**

ATGGTCCGTCGCGCCGTGCCCGTACCGCTCCGGCGCCGGGGCCCCCTCGGGGTGCGGGCCGCCCTC  
 CGCGGCCCTCGTGGTGCAGCCGTCCGCTCGCGCTCCTGGCTGCCAGCCCCGAGGCCCGCAGCTCC  
 GCGGATCCGGGCCGCTCGGCCCTCCCATGGAAGGTGCTCGGGTCTTCGGGCACTGGTCCCATCGGT  
 CCCTCCTCACCTGGGCTCACCTCGGGGTCTGGCCGTGAGCGAGCACCGGCTCAGCAACAAGCTGCTGG  
 CTTGGAGCGGCGTCTCGAGTGGCAGGAGAAGCGCAGACCCTACTCTGACTCCACTGCAAAGCTGAAGCG  
 GACCCTGCCCTGCCAAGCTACGTGAACCAAGGCGAGAACCTGGAGACCGACAGTGGCCGAGAAGCTG  
 ATCATGCAGCTGATCCCTCAGCAGCTGCTGACCACCCTGGGCCCCCTGTTCCGGAACCTCCAGTTGGCAC  
 AGTTCCACTTCACCAACAGAGACTGCGACTCGCTCAAGGGGCTCTGCCGATCATGGGCAACGGCTTCGC  
 GGGCTGCATGCTGTTCCCCACATCTCCCCCTGTGAGGTGCGCGTGTCTCATGCTCCTGTACTCGTCCAAG  
 AAGAAGATCTTCATGGGCTCATCCCCTACGACCAGAGCGGCTTCGTAGTGCATCCGGCAGGTATCA  
 CCACCCGAAGCAGGCAGTGGGACCTGGTGGTGTCAACTCAGGCCAGTCCAGATCGTCAACAACAAGTT  
 TCTGGCATGGAGTGGTGTATGGAGTGGCAGGAGCCAGGCCCTGAGCCCAACAGTCCGTCGAAGAGGTGG  
 CTGCCATCCCAGTCTACGTGAACAGGGGAGATCCTGAGACCGAGCAGTGGCCAAGGAAGCTGTACA  
 TGCAGCTATCCCGCAGCAGCTGCTGACCACCCTAGTGCCGCTGTTCCGGAACCTCGGCCTGGTCCAGTT  
 CCACTTACCAAGGACCTGGAGACTGAAGAGCCTGTGCCGGATCATGGACAATGGCTTCGCCGCTGC  
 GTGCATTTTCTACAAAGCATCGTGTGAGATCCGCGTGTATGCTCCTGTACTCTTACAGAGAAGAAA  
 TCTTCATTGGCCTCATCCCCATGACCAGGGCAACTTTGTCAACGGCATCCGGCGTGTATTGCCAACCA  
 GCAGCAGTCTCGACGGAACTGGAGCAGGAGCAACAGCAACGAGGGATGGGGGG

**ACGGT**ACGGGCCGCTCGAGCAGAACTCATCTCAGAAGAGGATCTGGCAGCAATGATATCCTGGATT  
 ACAAGGATGACGACGATAAGGTTTAA



[View online >](#)

**Protein Sequence:** >RC208317 representing NM\_017432  
 Red=Cloning site Green=Tags(s)

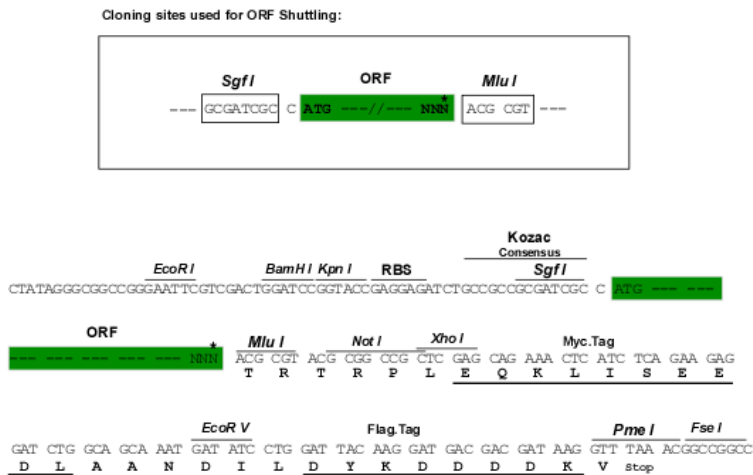
MVRPRRAPYRSGAGGGLGGRGRPPRPLVVRVRSRSPASPGRGPQPPRIRARSAPPMEGARVFGALGPIG  
 PSSPGLTLGGLAVSEHRLSNKLLAWSGVLEWQEKRRPYSDSTAKLKRTLPCQAYVNQGENLETDQWPQKL  
 IMQLIPQQLLTTLGPLFRNSQLAQHFHTNRDCDSLKGLCRIMGNGFAGCMLFPHISPCEVRVLMLLYSSK  
 KKIFMGLIPYDQSGFVSAIRQVITTRKQAVGPGGVNSGVPQIVNNKFLAWSGVMEWQEPREPEPNSRSKRW  
 LPSHVYVNQGEILRTEQWPRKLYMQLIPQQLLTTLVPLFRNSRLVQFHF TKDLETLKSLCRIMDNFGAGC  
 VHSYKASCEIRVLMMLYSSEKKIFIGLIPHDQGNFVNGIRRVIANQQVQLQRNLEQEQQQRGMGG

TRTRPLEQKLISEEDLAANDILDYKDDDDKV

**Chromatograms:** [https://cdn.origene.com/chromatograms/mg2762\\_g01.zip](https://cdn.origene.com/chromatograms/mg2762_g01.zip)

**Restriction Sites:** SgfI-MluI

**Cloning Scheme:**



\* The last codon before the Stop codon of the ORF

**ACCN:** NM\_017432

**ORF Size:** 1248 bp

**OTI Disclaimer:** The molecular sequence of this clone aligns with the gene accession number as a point of reference only. However, individual transcript sequences of the same gene can differ through naturally occurring variations (e.g. polymorphisms), each with its own valid existence. This clone is substantially in agreement with the reference, but a complete review of all prevailing variants is recommended prior to use. [More info](#)

**OTI Annotation:** This clone was engineered to express the complete ORF with an expression tag. Expression varies depending on the nature of the gene.

**Components:** The ORF clone is ion-exchange column purified and shipped in a 2D barcoded Matrix tube containing 10ug of transfection-ready, dried plasmid DNA (reconstitute with 100 ul of water).

**Reconstitution Method:**

1. Centrifuge at 5,000xg for 5min.
2. Carefully open the tube and add 100ul of sterile water to dissolve the DNA.
3. Close the tube and incubate for 10 minutes at room temperature.
4. Briefly vortex the tube and then do a quick spin (less than 5000xg) to concentrate the liquid at the bottom.
5. Store the suspended plasmid at -20°C. The DNA is stable for at least one year from date of shipping when stored at -20°C.

**RefSeq:** [NM\\_017432.5](#)

**RefSeq Size:** 1884 bp

**RefSeq ORF:** 1251 bp

**Locus ID:** 53635

**UniProt ID:** [Q86YD1](#)

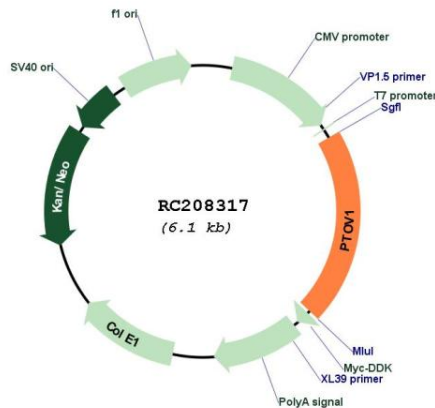
**Cytogenetics:** 19q13.33

**Protein Families:** Druggable Genome

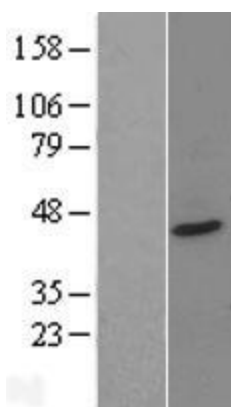
**MW:** 46.7 kDa

**Gene Summary:** This gene encodes a protein that was found to be overexpressed in prostate adenocarcinomas. The encoded protein was found to interact with the lipid raft protein flotillin-1 and shuttle it from the cytoplasm to the nucleus in a cell cycle dependent manner. Alternative splicing of this gene results in multiple transcript variants. [provided by RefSeq, Feb 2015]

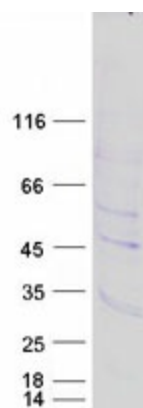
**Product images:**



Circular map for RC208317



Western blot validation of overexpression lysate (Cat# [LY413787]) using anti-DDK antibody (Cat# [TA50011-100]). Left: Cell lysates from untransfected HEK293T cells; Right: Cell lysates from HEK293T cells transfected with RC208317 using transfection reagent MegaTran 2.0 (Cat# [TT210002]).



Coomassie blue staining of purified PTOV1 protein (Cat# [TP308317]). The protein was produced from HEK293T cells transfected with PTOV1 cDNA clone (Cat# RC208317) using MegaTran 2.0 (Cat# [TT210002]).