

Product datasheet for **RC208315**

BRD9 (NM_001009877) Human Tagged ORF Clone

Product data:

Product Type:	Expression Plasmids
Product Name:	BRD9 (NM_001009877) Human Tagged ORF Clone
Tag:	Myc-DDK
Symbol:	BRD9
Synonyms:	LAVS3040; PRO9856
Mammalian Cell Selection:	Neomycin
Vector:	pCMV6-Entry (PS100001)
E. coli Selection:	Kanamycin (25 ug/mL)



[View online »](#)

ORF Nucleotide Sequence:

>RC208315 ORF sequence
 Red=Cloning site Blue=ORF Green=Tags(s)

TTTTGTAATACGACTCACTATAGGGCGGCCGGAATTCGTCGACTGGATCCGGTACCGAGGAGATCTGCC
 GCC**CGGATCGCC**

ATGAAGGGATACCAAAGTCTTGTATTCAATTTTTTTTTTTCCTTAAATTGTCAGCCGAAAATGAGAGCACAC
 CTATTCAGCAACTCCTGGAACACTTCTCCGCCAGCTTCAGAGAAAAGATCCCCATGGATTTTTTGCTTT
 TCTGTACGGATGCAATTGCTCCTGGATATCAATGATAATAAAAACATCCCATGGATTTTGGCACCATG
 AAAGACAAAATTGTAGCTAATGAATACAAGTCAGTTACGGAATTAAGGCAGATTTCAAGCTGATGTGTG
 ATAATGCAATGACATAACAATAGGCCAGATACCGTGTACTACAAGTTGGCGAAGAAGATCCTTCACGCAGG
 CTTTAAGATGATGAGCAAACAGGCAGCTCTTTGGGCAATGAAGATACAGCTGTTGAGGAACCTGTCCCT
 GAAGTTGTACCAGTACAAGTAGAACTGCCAAGAAATCCAAAAAGCCGAGTAGAGAAGTTATCAGCTGCA
 TGTTTGAGCCTGAAGGAATGCCTGCAGCTTGACGGACAGTACCGCAGAGGAGCACGTGCTGGCGCTGGT
 GGAGCACGCAGCTGACGAAGCTCGGGACAGGATCAACCGGTTCTCCAGCGCGCAAGATGGGCTATCTG
 AAGAGGAACGGGACGGGAGCCTGCTCTACAGCGTGGTCAACACGGCCGAGCCGGACGCTGATGAGGAGG
 AGACCCACCCGGTGGACTTGAGCTCGCTCTCCAGTAAGCTACTCCAGGCTTCACCACGCTGGGCTTCAA
 AGACGAGAGAAGAAACAAAGTCACCTTTCTCTCCAGTGCCACTACTGCGCTTTCGATGCAGAATAATTCA
 GTATTTGGCGACTTGAAGTCGGACGAGATGGAGCTGCTCTACTCAGCCTACGGAGATGAGACAGGCGTGC
 AGTGTGCGCTGAGCCTGCAGGAGTTTGTGAAGGATGCTGGGAGCTACAGCAAGAAAGTGGTGGACGACCT
 CCTGGACCAGATCACAGGCGGAGACCACTCTAGGACGCTCTTCCAGCTGAAGCAGAGAAGAAATGTTCCC
 ATGAAGCCTCCAGATGAAGCCAAGTTGGGGACACCCTAGGAGACAGCAGCAGCTCTGTTCTGGAGTTCA
 TGTCGATGAAGTCTATCCCAGCTTTCTGTGGATATCTCCATGCTCAGCTCTCTGGGAAGGTGAAGAA
 GGAGCTGGACCCTGACGACAGCCATTTGAACTTGGATGAGACGACGAAGCTCCTGCAGGACCTGCACGAA
 GCACAGGCGGAGCGGGCGGCTCTCGGCCGTCGTCACCTCAGCTCCCTGTCCAACGCCTCCGAGAGGG
 ACCAGCACCACTGGGAAGCCCTTCTCGCCTGAGTGTGGGGAGCAGCCAGAGCTCACCCACGACCCCTA
 TGAGTTTCTTTCAGTCTCCAGAGCCTGCGGCCTCTGCCAAGACC

ACCGGTACGCGGCCGCTCGAGCAGAAACTCATCTCAGAAGAGGATCTGGCAGCAAATGATATCCTGGATT
 ACAAGGATGACGACGATAAGGTTTAA

Protein Sequence:

>RC208315 protein sequence
 Red=Cloning site Green=Tags(s)

MKGYSQSLVFNFFFLKLSAENESTPIQQLLEHFLRQLQRKDPHGFFAFPVTDIAIPGYSMIIKHPMDFGTM
 KDKIVANEYKSVTEFKADFKLMCDNAMTYNRPDTVYYKLAKKILHAGFKMMSKQAALLGNEDTAVEEPVP
 EVVPVQVETAKKSKKPSREVISCMFEPEGNACSLTDSTAEHVLALVEHADEARDRINRFLPGGKMGYL
 KRNGDGSLLYSVNTAEPDADEEETHPVDSLSSKLLPGFTTLGFKDERRNKVTFLLSSATTALSMQNNNS
 VFGDLKSDMELLYSAYGDETGVCALSLQEFVKDAGSYSKVVDLLDQITGGDHSRTLFQLKQRRNVP
 MKPPDEAKVGDTLGDSSSVLEFMSMKSYPDVSDISMLSSLGKVKKELDPDSSHNLNDETTLKLLQDLHE
 AQAERGGSRPSSNLSSLNASERDQHHLGSPSRLSVGEQPDVTHDPYEFLLQSPEPAASAKT

TRTRPLEQKLISEEDLAANDILDYKDDDDKV

Chromatograms:

https://cdn.origene.com/chromatograms/mk6552_a09.zip

Restriction Sites:

Sgfl-MluI

Cloning Scheme:


ACCN: NM_001009877

ORF Size: 1443 bp

OTI Disclaimer: Due to the inherent nature of this plasmid, standard methods to replicate additional amounts of DNA in E. coli are highly likely to result in mutations and/or rearrangements. Therefore, OriGene does not guarantee the capability to replicate this plasmid DNA. Additional amounts of DNA can be purchased from OriGene with batch-specific, full-sequence verification at a reduced cost. Please contact our customer care team at custsupport@origene.com or by calling 301.340.3188 option 3 for pricing and delivery.

The molecular sequence of this clone aligns with the gene accession number as a point of reference only. However, individual transcript sequences of the same gene can differ through naturally occurring variations (e.g. polymorphisms), each with its own valid existence. This clone is substantially in agreement with the reference, but a complete review of all prevailing variants is recommended prior to use. [More info](#)

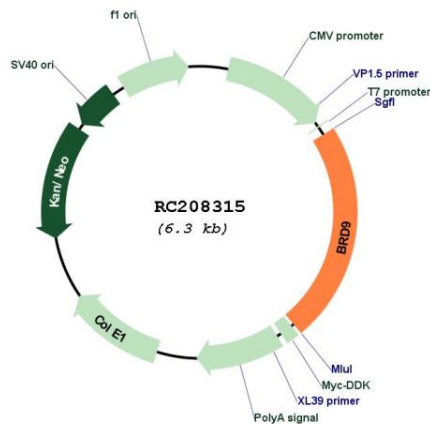
OTI Annotation: This clone was engineered to express the complete ORF with an expression tag. Expression varies depending on the nature of the gene.

Components: The ORF clone is ion-exchange column purified and shipped in a 2D barcoded Matrix tube containing 10ug of transfection-ready, dried plasmid DNA (reconstitute with 100 ul of water).

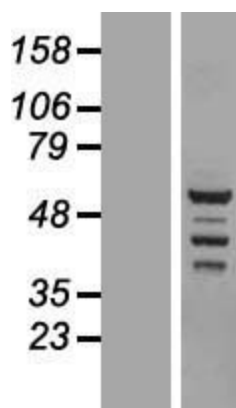
- Reconstitution Method:**
1. Centrifuge at 5,000xg for 5min.
 2. Carefully open the tube and add 100ul of sterile water to dissolve the DNA.
 3. Close the tube and incubate for 10 minutes at room temperature.
 4. Briefly vortex the tube and then do a quick spin (less than 5000xg) to concentrate the liquid at the bottom.
 5. Store the suspended plasmid at -20°C. The DNA is stable for at least one year from date of shipping when stored at -20°C.

RefSeq: [NM_001009877.1, NP_001009877.1](#)
RefSeq Size: 2526 bp
RefSeq ORF: 1635 bp
Locus ID: 65980
UniProt ID: [Q9H8M2](#)
Cytogenetics: 5p15.33
MW: 53.2 kDa
Gene Summary: Plays a role in chromatin remodeling and regulation of transcription (PubMed:22464331, PubMed:26365797). Acts as a chromatin reader that recognizes and binds acylated histones: binds histones that are acetylated and/or butyrylated (PubMed:26365797). Component of SWI/SNF chromatin remodeling subcomplex GBAF that carries out key enzymatic activities, changing chromatin structure by altering DNA-histone contacts within a nucleosome in an ATP-dependent manner (PubMed:29374058).[UniProtKB/Swiss-Prot Function]

Product images:



Circular map for RC208315



Western blot validation of overexpression lysate (Cat# [LY423141]) using anti-DDK antibody (Cat# [TA50011-100]). Left: Cell lysates from untransfected HEK293T cells; Right: Cell lysates from HEK293T cells transfected with RC208315 using transfection reagent MegaTran 2.0 (Cat# [TT210002]).