

## Product datasheet for **RC208312**

### **KRT34 (NM\_021013) Human Tagged ORF Clone**

#### **Product data:**

Product Type:	Expression Plasmids
Product Name:	KRT34 (NM_021013) Human Tagged ORF Clone
Tag:	Myc-DDK
Symbol:	KRT34
Synonyms:	Ha-4; HA4; hHa4; KRTHA4
Mammalian Cell Selection:	Neomycin
Vector:	pCMV6-Entry (PS100001)
E. coli Selection:	Kanamycin (25 ug/mL)



[View online »](#)

ORF Nucleotide  
Sequence:

>RC208312 representing NM\_021013  
Red=Cloning site Blue=ORF Green=Tags(s)

TTTTGTAATACGACTCACTATAGGGCGGCCGGAATTCGTCGACTGGATCCGGTACCGAGGAGATCTGCC  
GCCGCGATCGCC

ATGCTGTATGCCAAGCCCCACCCACAATTAATGGTATAAAAGGACTGCAGAGGAAGGAGAGACTCAAAC  
CTGCCACATCCACCTCCAGCAGCTTACCTGCTTTTCCATTACCTGTCCAGCACCATGTCTTACAGTTG  
TTGCCTGCCAGCCTGGGCTGCCGCACCAGCTGCTCCTCCCGGCCCTGCGTGCCCCCAGCTGCCACGGC  
TACACCCTGCCTGGGCTGCAACATCCCCGCAATGTGAGCAACTGCAACTGGTTCTGTGAGGGCTCCT  
TCAATGGCAGCGAGAAGGAGACTATGCAGTTCTGAACGACCGCCTGGCCAGCTACCTGGAGAAGGTGCG  
TCAGCTGGAGCGGACAACGCGGAGCTGGAGAACTCATCCAGGAGCGGTCCAGCAGCAGGAGCCCTTG  
CTGTGCCAGCTACCAGTCGACTTCAAGACCATTGAGGAGCTCCAGCAGAAGATTCTGTGTGCCAAGG  
CTGAGAATGCCAGGCTGGTGGTGAACATTGACAATGCCAAGCTGGCCTCTGACGACTTCAGAAGCAAGTA  
CCAGACGAGCAGTCCCTGAGGCTGTTGGTGGAGTCGGACATCAACAGCATAACGAGGATCCTGGATGAG  
CTGACCCTCTGCAAGTCTGACCTGGAGTCCCAGGTGGAGTCCCTGAGGGAGGAGCTGATCTGCTTGAAGA  
AGAACCATGAGGAGGAGTTAACACCCTGCGCTCCCAGCTTGGAGACCGCTCAACGTGGAGGTGGACAC  
TGCCCCACTGTGGACCTGAACCAGTCTGAACGAGACCAGGAGTCAGTATGAGGCTCTGGTGGAACT  
AACCAGGGAAGTGGAGCAATGGTTCGCCACGCAGACCAGGAGCTGAACAAGCAGGTGGTATCCAGCT  
CAGAGCAGCTGCAGTCTGCCAGGCGGAGATCATCGAGCTGAGACGCACAGTCAACGCCCTGGAGATCGA  
GCTGCAGGCCAGCACAACTGCGAGACTCTCTGGAAAACACGCTGACGGAGAGCGAGGCCCACTACAGC  
TCCCAGCTGTCCCAGGTGAGAGCCTGATCACCACGTTGGAGTCTCAGCTGGCAGAGATCCGCTGTGACC  
TGGAGCGGCAGAACAGGAGTACCAGGTGCTGCTGGAGTGGCCTGCCCGGCTGGAGTGTGAGATCAACAC  
GTACCGAGCCTCTGGAGAGTGGAGACTGCAAGCTCCCCTGCAACCCATGCGCCACCACCAATGCTAGT  
GGCAACTCCTGTGGACCCTGTGGCACCTCTAAAAGGTTGCTGTAAT

ACGCGTACGCGGCCGCTCGAGCAGAACTCATCTCAGAAGAGGATCTGGCAGCAATGATATCCTGGATT  
ACAAGGATGACGACGATAAGGTTTAA

## Protein Sequence:

>RC208312 representing NM\_021013  
Red=Cloning site Green=Tags(s)

MLYAKPPPTINGIKLQRKERLKPAAIHLQQLTCFSITCSSTMSYSCCLPSLGCRTSCSSRPCVPPSCHG  
YTLPGACNIPANVSNCFCEGSFNGSEKTMQFLNDRLASYLEKVRQLERDNELEKLIQERSQQQEPL  
LCPSYQSYFKTIEELQKILCAKAENARLVNIDNAKLASDDFRSKYQTEQSLRLLVESDINSIRRILDE  
LTLCKSDLESQVESLREELICLKKNHHEEVNLTLSQLGDRLNVEVDAPTVDLNQVLNETRSQYEALVET  
NRREVEQWFATQTEELNKQVVSSEQLQSCQAEIIELRRTVNALEIELQAQHNLRDSLENTLSEAHYS  
SQLSQVQLITNVESQLAEIRCDLERQNEQVLLDVRARLECEINTYRSLLESEDKLPCNPCATTNAS  
GNSCGPCGTSQKGCEN

TRTRPLEQKLISEEDLAANDILDYKDDDDKV

## Chromatograms:

[https://cdn.origene.com/chromatograms/mg3149\\_c01.zip](https://cdn.origene.com/chromatograms/mg3149_c01.zip)

## Restriction Sites:

Sgfl-Mlul

**Cloning Scheme:**


**ACCN:** NM\_021013

**ORF Size:** 1308 bp

**OTI Disclaimer:** The molecular sequence of this clone aligns with the gene accession number as a point of reference only. However, individual transcript sequences of the same gene can differ through naturally occurring variations (e.g. polymorphisms), each with its own valid existence. This clone is substantially in agreement with the reference, but a complete review of all prevailing variants is recommended prior to use. [More info](#)

**OTI Annotation:** This clone was engineered to express the complete ORF with an expression tag. Expression varies depending on the nature of the gene.

**Components:** The ORF clone is ion-exchange column purified and shipped in a 2D barcoded Matrix tube containing 10ug of transfection-ready, dried plasmid DNA (reconstitute with 100 ul of water).

**Reconstitution Method:**

1. Centrifuge at 5,000xg for 5min.
2. Carefully open the tube and add 100ul of sterile water to dissolve the DNA.
3. Close the tube and incubate for 10 minutes at room temperature.
4. Briefly vortex the tube and then do a quick spin (less than 5000xg) to concentrate the liquid at the bottom.
5. Store the suspended plasmid at -20°C. The DNA is stable for at least one year from date of shipping when stored at -20°C.

**RefSeq:** [NM\\_021013.3](#), [NP\\_066293.2](#)

**RefSeq Size:** 1713 bp

**RefSeq ORF:** 1311 bp

**Locus ID:** 3885

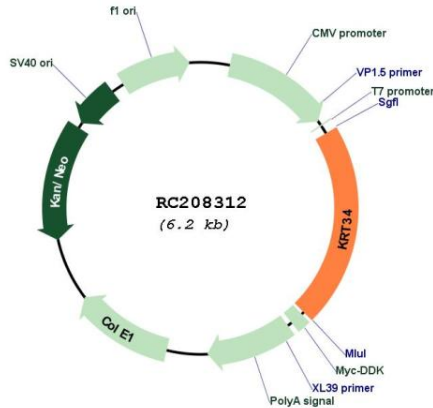
**UniProt ID:** [O76011](#)

**Cytogenetics:** 17q21.2

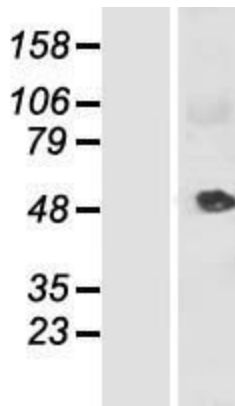
**MW:** 49.2 kDa

**Gene Summary:** The protein encoded by this gene is a member of the keratin gene family. As a type I hair keratin, it is an acidic protein which heterodimerizes with type II keratins to form hair and nails. The type I hair keratins are clustered in a region of chromosome 17q12-q21 and have the same direction of transcription. [provided by RefSeq, Jul 2008]

**Product images:**



Circular map for RC208312



Western blot validation of overexpression lysate (Cat# [LY412139]) using anti-DDK antibody (Cat# [TA50011-100]). Left: Cell lysates from untransfected HEK293T cells; Right: Cell lysates from HEK293T cells transfected with RC208312 using transfection reagent MegaTran 2.0 (Cat# [TT210002]).