

Product datasheet for **RC208311**

hCG beta (CGB7) (NM_033142) Human Tagged ORF Clone

Product data:

Product Type: Expression Plasmids
Product Name: hCG beta (CGB7) (NM_033142) Human Tagged ORF Clone
Tag: Myc-DDK
Symbol: hCG beta
Synonyms: CG-beta-a; CGB6
Mammalian Cell Selection: Neomycin
Vector: pCMV6-Entry (PS100001)
E. coli Selection: Kanamycin (25 ug/mL)
ORF Nucleotide Sequence: >RC208311 ORF sequence
Red=Cloning site Blue=ORF Green=Tags(s)

TTTTGTAATACGACTCACTATAGGGCGGCCGGAATTCGTCGACTGGATCCGGTACCGAGGAGATCTGCC
GCC**CGGATCGCC**

ATGGAGATGTTCCAGGGGCTGCTGCTGTTGCTGCTGCTGAGCATGGGCGGGACATGGGCATCCAAGGAGC
CGCTTCGGCCACGGTGCCGCCCATCAATGCCACCCTGGCTGTGGAGAAGGAGGGCTGCCCGTGTGCAT
CACCGTCAACACCACCATCTGTGCCGGCTACTGCCACCACATGACCCGCGTGTGCAGGGGGTCTGCCG
GCCCTGCCTCAGGTGGTGTGCAACTACCGCGATGTGCGCTTCGAGTCCATCCGGTCCCTGGCTGCCCGC
GCGGCGTGAACCCGTTGCTCCTACGCGTGGCTCTCAGCTGTCAATGTGCACTCTGCCCGCCAGCAC
CACTGACTGCGGGGGTCCAAGGACCACCCTTGACCTGTGATGACCCCGCTTCCAGGCCCTCCTCTTCC
TCAAAGGCCCTCCCCAGCCTTCCAAGTCCATCCCGACTCCCGGGGCCCTCGGACACCCCGATCTCC
CACAA

ACGCGTACGCGGCCGCTCGAGCAGAACTCATCTCAGAAGAGGATCTGGCAGCAAATGATATCCTGGATT
ACAAGGATGACGACGATAAGGTTTAA

Protein Sequence: >RC208311 protein sequence
Red=Cloning site Green=Tags(s)

MEMFQGLLLLLLLSMGGTASKEPLRPRCRPINATLAVEKEGCPVCITVNTTICAGYCPTMTRVLQGVLP
ALPQVVCNYRDRVFESIRLPGCPRGVNPVVSYAVALSCQCALCRRSTTDCGGPKDHPLTCDPRFQASS
SKAPPPSLPSPSRLPGPSDTPILPQ

TRTRPLEQKLISEEDLAANDILDYKDDDDKV

Chromatograms: https://cdn.origene.com/chromatograms/mk6552_a12.zip



[View online »](#)

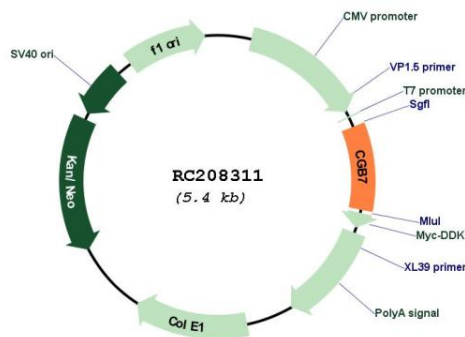
Cytogenetics: 19q13.33

Protein Families: Druggable Genome, Secreted Protein

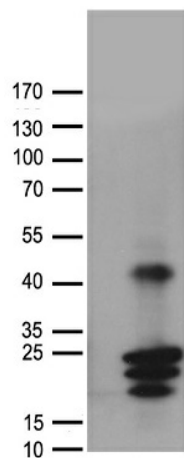
MW: 17.7 kDa

Gene Summary: This gene is a member of the glycoprotein hormone beta chain family and encodes the beta 7 subunit of chorionic gonadotropin (CG). Glycoprotein hormones are heterodimers consisting of a common alpha subunit and an unique beta subunit which confers biological specificity. CG is produced by the trophoblastic cells of the placenta and stimulates the ovaries to synthesize the steroids that are essential for the maintenance of pregnancy. The beta subunit of CG is encoded by 6 genes which are arranged in tandem and inverted pairs on chromosome 19q13.3 and contiguous with the luteinizing hormone beta subunit gene. [provided by RefSeq, Jul 2008]

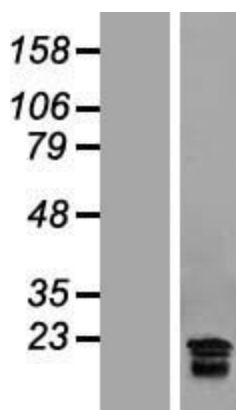
Product images:



Circular map for RC208311



HEK293T cells were transfected with the pCMV6-ENTRY control (Cat# [PS100001], Left lane) or pCMV6-ENTRY CGB7 (Cat# RC208311, Right lane) cDNA for 48 hrs and lysed. Equivalent amounts of cell lysates (5 ug per lane) were separated by SDS-PAGE and immunoblotted with anti-CGB7 antibody (Cat# [TA890044]). Positive lysates [LY409707] (100ug) and [LC409707] (20ug) can be purchased separately from OriGene.



Western blot validation of overexpression lysate (Cat# [LY409707]) using anti-DDK antibody (Cat# [TA50011-100]). Left: Cell lysates from untransfected HEK293T cells; Right: Cell lysates from HEK293T cells transfected with RC208311 using transfection reagent MegaTran 2.0 (Cat# [TT210002]).