

Product datasheet for **RC208309**

Syntrophin (SNTB2) (NM_006750) Human Tagged ORF Clone

Product data:

Product Type:	Expression Plasmids
Product Name:	Syntrophin (SNTB2) (NM_006750) Human Tagged ORF Clone
Tag:	Myc-DDK
Symbol:	Syntrophin
Synonyms:	D16S2531E; EST25263; SNT2B2; SNT3; SNTL
Mammalian Cell Selection:	Neomycin
Vector:	pCMV6-Entry (PS100001)
E. coli Selection:	Kanamycin (25 ug/mL)



[View online »](#)

ORF Nucleotide Sequence:

>RC208309 representing NM_006750
 Red=Cloning site Blue=ORF Green=Tags(s)

TTTTGTAATACGACTCACTATAGGGCGGCCGGAATTCGTCGACTGGATCCGGTACCGAGGAGATCTGCC
 GCC**CGCATCGCC**

ATGAGGGTAGCTGCGGCGACTGCGGCGGCTGGAGCGGGCCGCCATGGCGGTGTGGACGCGGGCCACCA
 AAGCGGGGCTGGTGGAGCTGCTCCTGAGGGAGCGCTGGGTCCGAGTGGTGGCCGAGCTGAGCGGGGAGAG
 CCTGAGCCTGACGGGCGACGCCGCCGCGGCGGAGCTGGAGCCCGCTCTGGGACCCGCGGCCGCCCTTC
 AACGGCCTCCAAACGGCGGGCGCGCGGGCGACTCGTGCCTGGGAGCCAAAGCCGCGGCCCTGGGGCCCC
 CGAGCCCCCGCGCCGCTCGGGGCCCGGGTGGAGCGGGCGCTGCCGCCCTGCGCCGGGTGCG
 GGTGGTGAAGCAAGAGGGCGGGCGCTGGGCATCAGCATCAAGGGCGGCCGCGAGAACCAGGATGCCGATC
 CTCATCTCAAGATCTTCCCGGGCTGGTGCAGCAGAGCCGGGCGCTGCGGCTGGGCGACGCCATCC
 TGTCGGTGAACGGCACCCACTGCGCCAGGCCACCCAGCAGCCGCTGCAGGCGCTGAAGCGCGCGGG
 CAAGGAGGTGCTGCTGGAGGTCAAGTTCATCCGAGAAGTAAACCATATATCAAGAAGCCATCATTAGTA
 TCAGATCTGCCGTGGGAAGGTGCAGCCCCAGTCAACCAAGCTTATAGTGGCAGTGAAGACTCTGGTTCGC
 CAAAACACCAGAACAGCACCAAGGACAGGAAGTATCCCTCTCAAAATGTGCTTTGCTGCTAGAAAACCT
 AAGCATGCCGGATCTGGAAAACAGATTGATAGAGCTACATTCTCCTGATAGCAGGAACACGTTGATCCTA
 CGCTGCAAAGATACAGCCACAGCACACTCCTGGTTCGTAGCTATCCACACCAACATAATGGCTCCTCCTC
 CACAGGTGTTGGCTGAATCAACGCCATGCTTGGGGCAACCAGTACAGCAGGAGGAGTAAAGAGGTGAA
 GCATATTGCCTGGCTGGCAGAACAGGCAAACTAGATGGTGAAGACAGCAATGGAGACCTGTCTCATG
 GCTGTGACTGAGAAGGATTTGCTGCTCTATGACTGTATGCCGTGGACAAGAGATGCCTGGCGCTCACCAT
 GCCACAGCTACCACCTTGTGCCACCAGTGGTTCATTCTGGCTCCGGATGTCGATCCCCCTCCCTTGG
 ATCTGACCTTACATTTGCTACCAGGACAGGCTCTCGACAGGCATTGAGATGCATCTTTCAGGGTGGAG
 ACACATCGGGATCTGTCATCCTGGACCAGGATACTTGTTCAGGGTGGCCATGCTGCTGCTGAGCTGATCA
 AGGAAGTCTCTAGGCTGCATGTTAAATGGCCAAGAGGTGAGGCTTACTATTCACTATGAAAATGGGTT
 CACCATCTCAAGGGAAAATGGAGGCTCCAGCAGCATATTGTACCCTACCCTTTGAAAGGCTGAAGATG
 TCTGCTGATGATGGCATCCGAAATCTATACTTGGATTTTGGTGGTCCCGAGGGAGAAGTACCATGGACC
 TGCCTCTGTCCGAAGCCGATTGATTTGTGTTGCACACGTTTTTATCGCCAAAGTCACTCGTATGGG
 ACTGCTTGTAA

ACGCGTACGCGGCGGCTCGAGCAGAACTCATCTCAGAAGAGGATCTGGCAGCAAATGATATCCTGGATT
 ACAAGGATGACGACGATAAGGTTTAA

Protein Sequence:

>RC208309 representing NM_006750
 Red=Cloning site Green=Tags(s)

MRVAAATAAAGAGPAMAVWTRATKAGLVELLLRERWVRVVAELSGESLSLTGDAAAAELEPALGPAAAF
 NGLPNGGGAGDSLPGSPSRGLGPPSPAPPGRPAGEAGASPPVRRVRVVKQEAGGLGISIKGGRENRMPI
 LISKIFPGLAADQSRALRLGDAILSVNGTDLRQATHDQAVQALKRAGKEVLLLEVKFIREVTPYIKKPSLV
 SDLPWEGAAPQSPSFGSEDSGSPKHQNSTKDRKI IPLKMCFAARNLSMPDLENRLIELHSPDSRNTLIL
 RCKDTATAHSWFVAIHTNIMALLPQVLAELNAMLGATSTAGGSKEVKHIAWLAEQAKLDGGRRQWRPVL
 AVTEKDLLLYDCMPWTRDAWASPCHSYPLVATRLVHSGSGCRSPSLGSDLTFATRTGSRQGIEMHLFRVE
 THRDLSSWTRILVQGCHAAAELIKEVSLGCMLNGQEVRLTIHYENGFTISRENGSSSILYRYPFERLKM
 SADDGIRNLYLDFGGPEGELTMDLHSCPPIVFLHTFLSAKVTRMGLLV

TRTRPLEQKLI SEEDLAANDILDYKDDDDKV

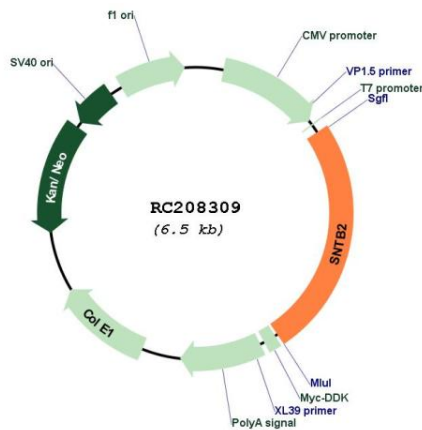
Restriction Sites:

Sgfl-MluI

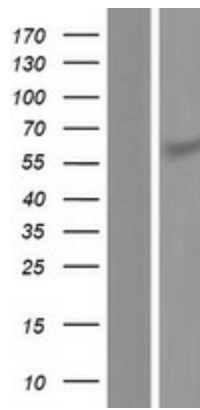
RefSeq: [NM_006750.3, NP_006741.1](#)
RefSeq Size: 9771 bp
RefSeq ORF: 1623 bp
Locus ID: 6645
UniProt ID: [Q13425](#)
Cytogenetics: 16q22.1
Protein Families: Secreted Protein
MW: 57.8 kDa

Gene Summary: Dystrophin is a large, rod-like cytoskeletal protein found at the inner surface of muscle fibers. Dystrophin is missing in Duchenne Muscular Dystrophy patients and is present in reduced amounts in Becker Muscular Dystrophy patients. The protein encoded by this gene is a peripheral membrane protein found associated with dystrophin and dystrophin-related proteins. This gene is a member of the syntrophin gene family, which contains at least two other structurally-related genes. [provided by RefSeq, Jul 2008]

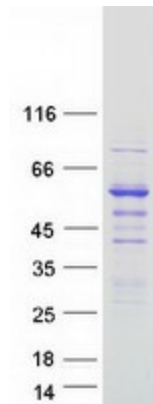
Product images:



Circular map for RC208309



Western blot validation of overexpression lysate (Cat# [LY416447]) using anti-DDK antibody (Cat# [TA50011-100]). Left: Cell lysates from untransfected HEK293T cells; Right: Cell lysates from HEK293T cells transfected with RC208309 using transfection reagent MegaTran 2.0 (Cat# [TT210002]).



Coomassie blue staining of purified SNTB2 protein (Cat# [TP308309]). The protein was produced from HEK293T cells transfected with SNTB2 cDNA clone (Cat# RC208309) using MegaTran 2.0 (Cat# [TT210002]).