

## Product datasheet for **RC208303**

### **CRLF1 (NM\_004750) Human Tagged ORF Clone**

#### **Product data:**

Product Type:	Expression Plasmids
Product Name:	CRLF1 (NM_004750) Human Tagged ORF Clone
Tag:	Myc-DDK
Symbol:	CRLF1
Synonyms:	CISS; CISS1; CLF; CLF-1; NR6; zcytor5
Mammalian Cell Selection:	Neomycin
Vector:	pCMV6-Entry (PS100001)
E. coli Selection:	Kanamycin (25 ug/mL)



[View online »](#)

**ORF Nucleotide Sequence:**

>RC208303 ORF sequence  
 Red=Cloning site Blue=ORF Green=Tags(s)

TTTTGTAATACGACTCACTATAGGGCGGCCGGGAATTCGTCGACTGGATCCGGTACCGAGGAGATCTGCC  
 GCC**CGGATCGCC**

ATGCCCGCCGGCCCGGGGCCCGCCGCAATCCGCGCGGCGGCCCGCCGCTTGTGCCCTGTCTGC  
 TGCTGCTCTGCGTCTCGGGCGCCGCGAGCCGATCAGGAGCCACACAGCTGTGATCAGTCCCCAGGA  
 TCCACGCTTCTCATCGGCTCCTCCCTGTGGCCACCTGCTCAGTGCACGGAGACCCACCAGGAGCCACC  
 GCCGAGGGCTCTACTGGACCCTCAACGGGCGCCGCTGCCCCCTGAGCTCTCCCGTGTACTCAACGCT  
 CCACCTTGGCTCTGGCCCTGGCCAACTCAATGGGTCCAGGCAGCGGTGGGGGACAACCTCGTGTGCCA  
 CGCCCGTACGGCAGCATCCTGGCTGGCTCCTGCCTCTATGTTGGCTGCCCCAGAGAAACCCGCTCAAC  
 ATCAGTGTGGTCCAAGAACATGAAGGACTTGACCTGCCGCTGGACGCCAGGGGCCACGGGGAGACCT  
 TCCTCCACACCACTACTCCCTCAAGTACAAGCTTAGGTGGTATGGCCAGGACAACATGTGAGGAGTA  
 CCACACAGTGGGGCCCCACTCCTGCCACATCCCAAGGACCTGGCTCTCTTTACGCCCTATGAGATCTGG  
 GTGGAGGCCACCAACCGCTGGGCTCTGCCCGCTCCGATGTACTCAGCTGGATATCCTGGATGTGGTGA  
 CCACGGACCCCCCGCCGACGTGCACGTGAGCCGCTCGGGGGCCTGGAGGACCAGCTGAGCGTGCCTG  
 GGTGTGCGCACCCGCCCTCAAGGATTTCTCTTTCAAGCCAAATACCAGATCCGCTACCGAGTGGAGGAC  
 AGTGTGGACTGGAAGGTGGTGGACGATGTGAGCAACCAGACCTCCTGCCGCTGGCCGGCCTGAAACCCG  
 GCACCGTGTACTTCGTGCAAGTGCCTGCAACCCCTTTGGCATCTATGGTCCAAGAAAGCCGGGATCTG  
 GAGTGTGGAGCCACCCACAGCCGCTCCACTCCCCGAGTGAAGCCCGGGCCGGGGCGGGGGCG  
 TGCGAACCGGGGGGGAGAGCCGAGCTCGGGCCGGTGGCGCGAGCTCAAGCAGTTCCTGGGCTGGC  
 TCAAGAAGCACGGTACTGCTCCAATCTCAGCTCCGCTCTACGACCAGTGGCGAGCCTGGATGCAGAA  
 GTCGCACAAGACCCGCAACCAGGACGAGGGGATCCTGCCCTCGGGCAGACGGGGCACGGCGAGAGTCT  
 GCCAGA

AG**CGGACCG**ACGCGTACGCGGCCGCTCGAGCAGAACTCATCTCAGAAGAGGATCTGGCAGCAAATGATATCC  
 TGGATTACAAGGATGACGACGATAAGGTTAA

**Protein Sequence:**

>RC208303 protein sequence  
 Red=Cloning site Green=Tags(s)

MPAGRRGPAAQSARRPPPLPLLLLLCVLGAPRAGSGAHTAVISPDPTLLIGSSLLATCSVHGDPPGAT  
 AEGLYWTLNRRLLPEL SRVLNASTLALANLNGSRQSGDNLVCHARDGSILAGSCLYVGLPPEKPVN  
 ISCWSKNMKDLTCRWTPGAHGETFLHTNYSKYKLRWYQDNTCEEYHTVGPHSCHIPKDLALFTPYEIW  
 VEATNRLGSARSDVLTLDILDVVTDPDPDVHVS RVGGLEDQLSVRWVSPALKDFLFQAKYQIRYRVED  
 SVDWKVVDDVSNQTSCLRAGLKPVTYFVQVRCNPFGIYGSKKAGIWEWSHPTAASTPRSERPGGGGA  
 CEPRGGEPSSGPVRRELKQFLGWLKHHAYCSNLSFRLYDQWRAWMQKSHKTRNQDEGILPSGRRGTARGP  
 AR

**SGP**TRTRPLEQKLI SEEDLAANDILDYKDDDDK

**Chromatograms:**

[https://cdn.origene.com/chromatograms/mk6806\\_h05.zip](https://cdn.origene.com/chromatograms/mk6806_h05.zip)

**Restriction Sites:**

Sgfl-RsrII

**Cloning Scheme:**


**ACCN:** NM\_004750

**ORF Size:** 1266 bp

**OTI Disclaimer:** The molecular sequence of this clone aligns with the gene accession number as a point of reference only. However, individual transcript sequences of the same gene can differ through naturally occurring variations (e.g. polymorphisms), each with its own valid existence. This clone is substantially in agreement with the reference, but a complete review of all prevailing variants is recommended prior to use. [More info](#)

**OTI Annotation:** This clone was engineered to express the complete ORF with an expression tag. Expression varies depending on the nature of the gene.

**Components:** The ORF clone is ion-exchange column purified and shipped in a 2D barcoded Matrix tube containing 10ug of transfection-ready, dried plasmid DNA (reconstitute with 100 ul of water).

**Reconstitution Method:**

1. Centrifuge at 5,000xg for 5min.
2. Carefully open the tube and add 100ul of sterile water to dissolve the DNA.
3. Close the tube and incubate for 10 minutes at room temperature.
4. Briefly vortex the tube and then do a quick spin (less than 5000xg) to concentrate the liquid at the bottom.
5. Store the suspended plasmid at -20°C. The DNA is stable for at least one year from date of shipping when stored at -20°C.

**RefSeq:** [NM\\_004750.5](#)

**RefSeq Size:** 1824 bp

**RefSeq ORF:** 1269 bp

**Locus ID:** 9244

**UniProt ID:** [O75462](#)

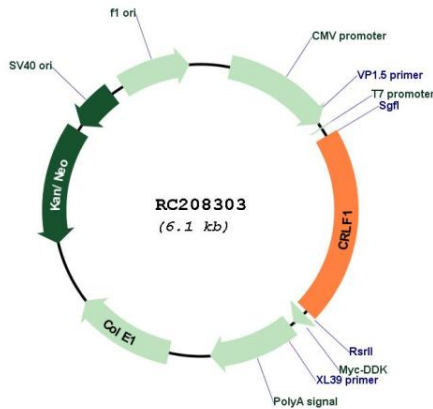
**Cytogenetics:** 19p13.11

**Protein Families:** Druggable Genome, Secreted Protein

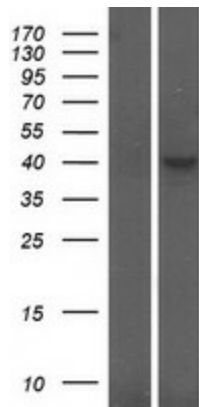
**MW:** 46.3 kDa

**Gene Summary:** This gene encodes a member of the cytokine type I receptor family. The protein forms a secreted complex with cardiotrophin-like cytokine factor 1 and acts on cells expressing ciliary neurotrophic factor receptors. The complex can promote survival of neuronal cells. Mutations in this gene result in Crisponi syndrome and cold-induced sweating syndrome. [provided by RefSeq, Oct 2009]

**Product images:**



Circular map for RC208303



Western blot validation of overexpression lysate (Cat# [LY417784]) using anti-DDK antibody (Cat# [TA50011-100]). Left: Cell lysates from untransfected HEK293T cells; Right: Cell lysates from HEK293T cells transfected with RC208303 using transfection reagent MegaTran 2.0 (Cat# [TT210002]).