

Product datasheet for **RC208302**

RAB4B (NM_016154) Human Tagged ORF Clone

Product data:

Product Type: Expression Plasmids
Product Name: RAB4B (NM_016154) Human Tagged ORF Clone
Tag: Myc-DDK
Symbol: RAB4B
Mammalian Cell Selection: Neomycin
Vector: pCMV6-Entry (PS100001)
E. coli Selection: Kanamycin (25 ug/mL)
ORF Nucleotide Sequence: >RC208302 ORF sequence
Red=Cloning site Blue=ORF Green=Tags(s)

TTTTGTAATACGACTCACTATAGGGCGGCCGGAATTCGTCGACTGGATCCGGTACCGAGGAGATCTGCC
GCC**CGATCGCC**

ATGGCTGAGACCTACGACTTCCTCTTCAAATTCCTGGTGATTGGCAGTGCAGGAAGTGGCAAATCATGTC
TCCTTCATCAGTTCATTGAGAATAAGTTCAAACAGGACTCCAACACACAATCGGCGTGGAGTTGGATC
CCGGTGGTCAACGTGGGTGGGAAGACTGTGAAGCTACAGATTTGGGACACGGCTGGCCAGGAGCGGTTT
CGGTCACTGACGCGGAGTTATTACCGAGGGCGGCTGGAGCCCTGCTGGTGTACGACATCACCAGCCGGG
AGACATACAACTCACTGGCTGCCTGGCTGACGGATGCCCGACCTGGCCAGCCCAACATCGTGGTCA
CCTCTGTGGCAACAAGAAGGACCTGGACCTGAGCGGGAGGTCACTTTCCTGGAGGCTCCCGCTTTGCC
CAGGAGAATGAGCTGATGTTCTGGAGACCAGCGCTCTCACAGGCGAGAACGTGGAGGAGCGTTCCTCA
AGTGTGCCCGCACTATCCTCAACAAGATTGACTCAGGCGAGCTAGACCCGGAGAGGATGGCTCTGGCAT
TCAGTACGGGGATGCGTCCCTCCGCCAGCTTCGGCAGCCTCGGAGTGCCAGGCCGTGGCCCTCAGCCG
TGTGGCTGC

ACGCGTACGCGGCCGCTCGAGCAGAAACTCATCTCAGAAGAGGATCTGGCAGCAAATGATATCCTGGATT
ACAAGGATGACGACGATAAGGTTTAA

Protein Sequence: >RC208302 protein sequence
Red=Cloning site Green=Tags(s)

MAETYDFLFKFLVIGSAGTGKSCLLHQFIENKFKQDSNHTIGVEFGSRVNVVGGKTVKLQIWDTAGQERF
RSVTRSYYRGAAGALLVYDITSRETYNSLAAWLTDARTLASPNIIVVILCGNKKDLDPEREVTFLEASRFA
QENELMFLETSALTGENVEEAFKLCARTILNKIDSGELDPERMGSGIQYGASLRQLRQPRSAQAVAPQP
CGC

TRTRPLEQKLISEEDLAANDILDYKDDDDKV



Chromatograms: https://cdn.origene.com/chromatograms/mk6552_f09.zip

Restriction Sites: SgfI-MluI

Cloning Scheme:



ACCN: NM_016154

ORF Size: 639 bp

OTI Disclaimer: The molecular sequence of this clone aligns with the gene accession number as a point of reference only. However, individual transcript sequences of the same gene can differ through naturally occurring variations (e.g. polymorphisms), each with its own valid existence. This clone is substantially in agreement with the reference, but a complete review of all prevailing variants is recommended prior to use. [More info](#)

OTI Annotation: This clone was engineered to express the complete ORF with an expression tag. Expression varies depending on the nature of the gene.

Components: The ORF clone is ion-exchange column purified and shipped in a 2D barcoded Matrix tube containing 10ug of transfection-ready, dried plasmid DNA (reconstitute with 100 ul of water).

Reconstitution Method:

1. Centrifuge at 5,000xg for 5min.
2. Carefully open the tube and add 100ul of sterile water to dissolve the DNA.
3. Close the tube and incubate for 10 minutes at room temperature.
4. Briefly vortex the tube and then do a quick spin (less than 5000xg) to concentrate the liquid at the bottom.
5. Store the suspended plasmid at -20°C. The DNA is stable for at least one year from date of shipping when stored at -20°C.

RefSeq: [NM_016154.5](#)

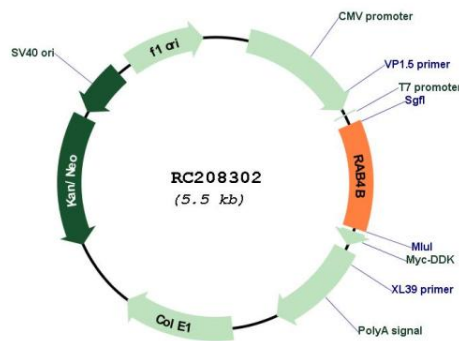
RefSeq Size: 1200 bp

RefSeq ORF: 642 bp

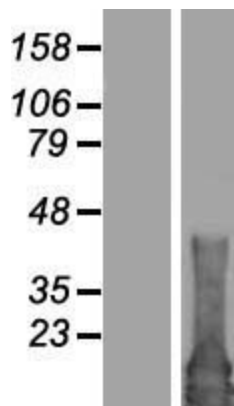
Locus ID: 53916

UniProt ID: [P61018](#)
Cytogenetics: 19q13.2
Domains: ras, RAN, RAS, RHO, RAB
Protein Families: Druggable Genome
MW: 23.6 kDa
Gene Summary: RAB proteins, such as RAB4B, are members of the RAS superfamily of small GTPases that are involved in vesicular trafficking (He et al., 2002 [PubMed 12450215]).[supplied by OMIM, Aug 2009]

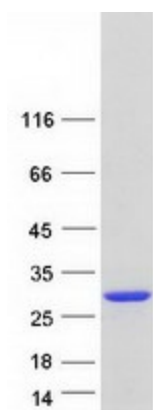
Product images:



Circular map for RC208302



Western blot validation of overexpression lysate (Cat# [LY414149]) using anti-DDK antibody (Cat# [TA50011-100]). Left: Cell lysates from untransfected HEK293T cells; Right: Cell lysates from HEK293T cells transfected with RC208302 using transfection reagent MegaTran 2.0 (Cat# [TT210002]).



Coomassie blue staining of purified RAB4B protein (Cat# [TP308302]). The protein was produced from HEK293T cells transfected with RAB4B cDNA clone (Cat# RC208302) using MegaTran 2.0 (Cat# [TT210002]).