

## Product datasheet for RC208298

### SUCLG2 (NM\_003848) Human Tagged ORF Clone

#### Product data:

Product Type:	Expression Plasmids
Product Name:	SUCLG2 (NM_003848) Human Tagged ORF Clone
Tag:	Myc-DDK
Symbol:	SUCLG2
Synonyms:	G-SCS; GBETA; GTPSCS
Mammalian Cell Selection:	Neomycin
Vector:	pCMV6-Entry (PS100001)
E. coli Selection:	Kanamycin (25 ug/mL)
ORF Nucleotide Sequence:	>RC208298 ORF sequence Red=Cloning site Blue=ORF Green=Tags(s)

TTTTGTAATACGACTCACTATAGGGCGCCGGGAATTCGTCGACTGGATCCGGTACCGAGGAGATCTGCC  
GCC**CGATCGCC**

ATGTCTGACAACGGAGTGAGAGTTCAAAGATTCTTTGTAGCAGACACTGCAAATGAAGCTCTCGAGGCTG  
CTAAGAGACTAAATGCAAAAGAAATTGTTTTAAAAGCCCAGATCTTAGCTGGAGGAAGAGGAAAAGGTGT  
CTTCAATAGTGGTTTAAAGGAGGTGTTCAATTTAACAAAAGACCCTAATGTTGTGGGACAGCTGGCTAAA  
CAGATGATTGGGTACAATCTAGCGACAAAACAACTCCAAAAGAAGGTGTGAAAGTTAACAAAGGTGATGG  
TTGCTGAAGCCTTGATATTTCCAGAGAAACCTACCTGGCAATCTGATGGACCGTCTGCAATGGCCC  
CGTGTGGTGGCAGCCCCAGGGGGCGTTCGACATTGAAGAGGTGGCTGCTTCAAACCCGGAGCTCATT  
TTTAAGGAGCAAATTTGACATTTTTGAAGGAATAAAGGACAGCCAAGCTCAGCGGATGGCCGAAAATCTAG  
GCTTCGTTGGGCCTTTGAAAAGCCAGGCTGCAGATCAAATTACGAAGCTGTATAATCTCTTCCTGAAAAT  
TGATGCTACTCAGGTGGAAGTGAATCCCTTTGGTAAAACCCAGAAGGACAAGTTGTCTGTTTTGATGCC  
AAGATAAACTTTGATGACAACGCAGAATCCGACAAAAAGACATATTTGCTATGGACGACAAATCAGAGA  
ATGAGCCCATGAAAATGAAGCTGCCAAATATGATCTAAAATACATAGGACTAGATGGGAACATTGCCTG  
CTTTGTGAATGGTGTGGCTCGCCATGGCTACTTGTGATATCATTTTCCCTTAATGGTGGGAAGCCAGCC  
AACTTCTTGATCTTGGAGTGGTGAAGGAAGCTCAAGTATATCAAGCATTCAAATGCTCACAGCTG  
ATCCTAAGGTTGAAGCCATCCTTGTCAATATTTGGTGGTATCGTCAACTGTGCCATCATTGCCAATGG  
GATCACCAAAAGCCTGCCGGAGCTAGAAGTCAAGGTGCCCTGGTGGTCCGGCTTGAAGGAACCAACGTC  
CAAGAGGCCCAGAAGATACTCAACAACAGCGGACTCCCCATTACTTCAGCCATTGACCTGGAGGATGCAG  
CCAAGAAGGCTGTGGCCAGTGTGGCCAAGAAG

**ACGCGT**ACGCGGCCGCTCGAGCAGAACTCATCTCAGAAGAGGATCTGGCAGCAAATGATATCCTGGATT  
ACAAGGATGACGACGATAAGGTTTAA



[View online >](#)

**Protein Sequence:** >RC208298 protein sequence  
Red=Cloning site Green=Tags(s)

MSDNGVRVQRFFVADTANEALEAAKRLNAKEIVLKAQILAGGRGKGVFNSGLKGGVHLTKDPNVVGLAK  
 QMIGYNLATKQTPKEGVKVNKVMVAEALDISRETYLAILMDRSCNGPVLVGSPPGGVDIEEVAASNPELI  
 FKEQIDIFEGIKDSQAQRMAENLGFVGPLKSAADQITKLYNLFLKIDATQVEVNPFGETPEGQVVCFDA  
 KINFDDNAEFRQKIDIFAMDDKSENEPIEENAAKYDLKYIGLDGNIACFVNGAGLAMATCDIIFLNGGKPA  
 NFLDLGGGVKEAQVYQAFKLLTADPKVEAILVNIFFGGIVNCAIIANGITKACRELELKVPLVVRLEGTNV  
 QEAQKILNNSGLPITSAIDLEDAAKKAVASVAKK

TRTRPLEQKLISEEDLAANDILDYKDDDDKV

**Chromatograms:** [https://cdn.origene.com/chromatograms/mk6246\\_h01.zip](https://cdn.origene.com/chromatograms/mk6246_h01.zip)

**Restriction Sites:** SgfI-MluI

**Cloning Scheme:**



\* The last codon before the Stop codon of the ORF

**ACCN:** NM\_003848

**ORF Size:** 1152 bp

**OTI Disclaimer:** The molecular sequence of this clone aligns with the gene accession number as a point of reference only. However, individual transcript sequences of the same gene can differ through naturally occurring variations (e.g. polymorphisms), each with its own valid existence. This clone is substantially in agreement with the reference, but a complete review of all prevailing variants is recommended prior to use. [More info](#)

**OTI Annotation:** This clone was engineered to express the complete ORF with an expression tag. Expression varies depending on the nature of the gene.

**Components:** The ORF clone is ion-exchange column purified and shipped in a 2D barcoded Matrix tube containing 10ug of transfection-ready, dried plasmid DNA (reconstitute with 100 ul of water).

**Reconstitution Method:**

1. Centrifuge at 5,000xg for 5min.
2. Carefully open the tube and add 100ul of sterile water to dissolve the DNA.
3. Close the tube and incubate for 10 minutes at room temperature.
4. Briefly vortex the tube and then do a quick spin (less than 5000xg) to concentrate the liquid at the bottom.
5. Store the suspended plasmid at -20°C. The DNA is stable for at least one year from date of shipping when stored at -20°C.

**RefSeq:** [NM\\_003848.1](#), [NP\\_003839.1](#)

**RefSeq Size:** 2363 bp

**RefSeq ORF:** 1299 bp

**Locus ID:** 8801

**UniProt ID:** [Q96I99](#)

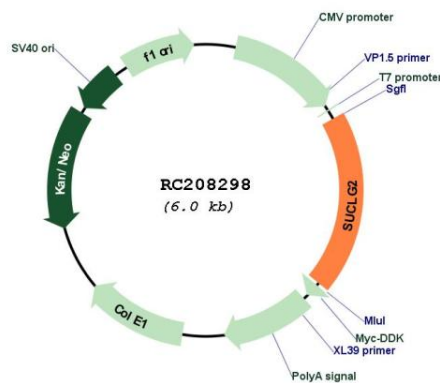
**Cytogenetics:** 3p14.1

**Protein Pathways:** Citrate cycle (TCA cycle), Metabolic pathways, Propanoate metabolism

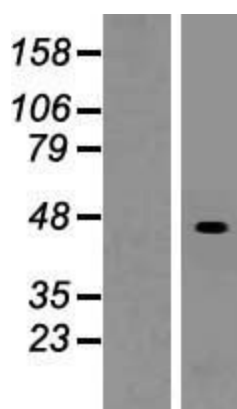
**MW:** 41.2 kDa

**Gene Summary:** This gene encodes a GTP-specific beta subunit of succinyl-CoA synthetase. Succinyl-CoA synthetase catalyzes the reversible reaction involving the formation of succinyl-CoA and succinate. Alternate splicing results in multiple transcript variants. Pseudogenes of this gene are found on chromosomes 5 and 12. [provided by RefSeq, Apr 2010]

### Product images:



Circular map for RC208298



Western blot validation of overexpression lysate (Cat# [LY418394]) using anti-DDK antibody (Cat# [TA50011-100]). Left: Cell lysates from untransfected HEK293T cells; Right: Cell lysates from HEK293T cells transfected with RC208298 using transfection reagent MegaTran 2.0 (Cat# [TT210002]).