

## Product datasheet for RC208297

### LYPD6 (NM\_194317) Human Tagged ORF Clone

#### Product data:

Product Type:	Expression Plasmids
Product Name:	LYPD6 (NM_194317) Human Tagged ORF Clone
Tag:	Myc-DDK
Symbol:	LYPD6
Mammalian Cell Selection:	Neomycin
Vector:	pCMV6-Entry (PS100001)
E. coli Selection:	Kanamycin (25 ug/mL)
ORF Nucleotide Sequence:	>RC208297 ORF sequence Red=Cloning site Blue=ORF Green=Tags(s)

TTTTGTAATACGACTCACTATAGGGCGGCCGGAATTCGTCGACTGGATCCGGTACCGAGGAGATCTGCCGCCGCGATCGCC

ATGGAACCTGGCCCTGCTCTGGCCTGGCTCCTGCTCCTGAGCCTGCTGGCGGATTGTCTGAAAGCTGCTCAGTCCCAGAGACTCACAGTAAAAGACATTATCTACCTCCATCCTCAACCACACCATATCCTGGTGGATTAAATGTTTCACCTGTGAAAAGGCAGCAGACAATTATGAGTGAACCGATGGGCTCCAGACATCTACTGCCCTCGAGAGACCAGATACTGCTACACTCAGCACACAATGGAAGTCACAGGAAACAGTATCTCAGTCACCAACGCTGTGTCCCACTGGAAGAGTGTATCCACTGGCTGCAGAGACTCCGAGCATGAAGGCCACAAGTCTGCACCTTCTTGTGTGAAGGAAATATCTGTAACCTGCCACTGCCCGAAATGAAACTGATGCCACATTTGCCACGACGTACCTATAAATCAGACAAAATGGGCACCCACGCTGTATGTCAGTGATAGTGTCTGCTTGTGGTTGGTTAGGGCTCATGTTA

ACGCGTACGCGGCCGCTCGAGCAGAAACTCATCTCAGAAGAGGATCTGGCAGCAAATGATATCCTGGATTACAAGGATGACGACGATAAGGTTTAA

Protein Sequence:	>RC208297 protein sequence Red=Cloning site Green=Tags(s)
-------------------	--

MEPGPALAWLLLLLADCLKAAQSRDFTVKDIIYLHPSTTPYPGGFKCFTCEKAADNYECNRWAPDIYC  
PRETRYCYTQHTMEVTGNSISVTKRCVPLEECLSTGCRDSEHEGHKVTSCCEGNICNLPLPRNETDATF  
ATTSPINQTNHPRCMSVIVSCLWLWGLML

TRTRPLEQKLISEEDLAANDILDYKDDDDKV

Chromatograms: [https://cdn.origene.com/chromatograms/mk6347\\_d04.zip](https://cdn.origene.com/chromatograms/mk6347_d04.zip)

Restriction Sites: Sgfl-Mlul



[View online »](#)

**Cloning Scheme:**


**ACCN:** NM\_194317

**ORF Size:** 513 bp

**OTI Disclaimer:** The molecular sequence of this clone aligns with the gene accession number as a point of reference only. However, individual transcript sequences of the same gene can differ through naturally occurring variations (e.g. polymorphisms), each with its own valid existence. This clone is substantially in agreement with the reference, but a complete review of all prevailing variants is recommended prior to use. [More info](#)

**OTI Annotation:** This clone was engineered to express the complete ORF with an expression tag. Expression varies depending on the nature of the gene.

**Components:** The ORF clone is ion-exchange column purified and shipped in a 2D barcoded Matrix tube containing 10ug of transfection-ready, dried plasmid DNA (reconstitute with 100 ul of water).

**Reconstitution Method:**

1. Centrifuge at 5,000xg for 5min.
2. Carefully open the tube and add 100ul of sterile water to dissolve the DNA.
3. Close the tube and incubate for 10 minutes at room temperature.
4. Briefly vortex the tube and then do a quick spin (less than 5000xg) to concentrate the liquid at the bottom.
5. Store the suspended plasmid at -20°C. The DNA is stable for at least one year from date of shipping when stored at -20°C.

**RefSeq:** [NM\\_194317.5](#)

**RefSeq Size:** 4101 bp

**RefSeq ORF:** 516 bp

**Locus ID:** 130574

**UniProt ID:** [Q86Y78](#)

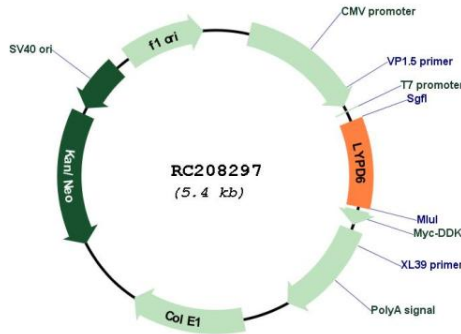
**Cytogenetics:** 2q23.2

**Protein Families:** Secreted Protein

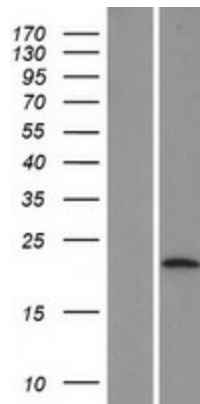
**MW:** 19.1 kDa

**Gene Summary:** Members of the LY6 protein family (see SLURP1; MIM 606119), such as LYPD6, have at least one 80-amino acid LU domain that contains 10 conserved cysteines with a defined disulfide-bonding pattern (Zhang et al., 2010 [PubMed 19653121]).[supplied by OMIM, Apr 2010]

**Product images:**



Circular map for RC208297



Western blot validation of overexpression lysate (Cat# [LY405166]) using anti-DDK antibody (Cat# [TA50011-100]). Left: Cell lysates from untransfected HEK293T cells; Right: Cell lysates from HEK293T cells transfected with RC208297 using transfection reagent MegaTran 2.0 (Cat# [TT210002]).