

Product datasheet for RC208293

KLF17 (NM_173484) Human Tagged ORF Clone

Product data:

Product Type:	Expression Plasmids
Product Name:	KLF17 (NM_173484) Human Tagged ORF Clone
Tag:	Myc-DDK
Symbol:	KLF17
Synonyms:	Zfp393; ZLF393; ZNF393
Mammalian Cell Selection:	Neomycin
Vector:	pCMV6-Entry (PS100001)
E. coli Selection:	Kanamycin (25 ug/mL)
ORF Nucleotide Sequence:	>RC208293 ORF sequence Red=Cloning site Blue=ORF Green=Tags(s)

TTTTGTAATACGACTCACTATAGGGCGGCCGGAATTCGTCGACTGGATCCGGTACCGAGGAGATCTGCC
GCC**CGATCGCC**

ATGTACGGCCGACCGCAGGCTGAGATGGAACAGGAGGCTGGGGAGCTGAGCCGGTGGCAGGCGGCCACCC
AGGCTGCCAGGATAACGAGAATCAGCGCCCATCTTGAACATGTCTTCATCTTCTGGAAGCTCTGGAGT
GCACACCTCTTGAACCAAGGCCTACCAACCATTGAGCACTTTCTCACAGCGCAGAGATGCTGGGGTCC
CCTTTGGTGTCTGTTGAGGCGCCGGGCGAGAATGTGAATGAAGGGGGCCACAGTTCAGTATGCCACTGC
CTGAGCGTGGTATGAGCTACTGCCCAAGCGACTCTCACTCCTTCCCGGATGATTTACTGTCAGAGAAT
GTCTCCCCCTCAGCAAGAGATGACGATTTTCAGTGGGCCCAACTAATGCCCGTAGGAGAGCCCAATATT
CCAAGGGTAGCCAGGCCCTTCGGTGGGAATCTAAGGATGCCCAAGTGGGCTGCCAGTCTCAGTTCCA
CTGGAATCCCAATAATGTCCCACACTGGGAACCCCTCCAGTGCCTTACCCTGGCCTCTCGACAGTACCTTC
TGACGAAACATTGTTGGGCCGACTGTGCCTTCCACTGAGGCCAGGCAGTGCCTCCCTCCATGGCTCAG
ATGTTGCCCGCAAGATGCCATGACCTTGGGATGCCCCAGCTGAGTCCAGTCAATGCTGGTTTTAG
GATCTCAGGACTCTTTGTCAGTCAGCCAGACTCTCAAGAAGGCCATTTCTACCAGAGCAGCCCGGACC
TGCTCCACAGACAGTAGAGAAGAACTCCAGGCCCTCAGGAAGGACTGGTAGAAGGGGCTCCTCAGAGGCA
AGGCCTTACTGCTGCAACTACGAGAATGCGGAAAAGCTTATACCAAACGCTCCACCTCGTGAGCCACC
AGCGCAAGCACACAGGTGAGAGGCCATATTCTTGCAACTGGGAAAAGTTGTCATGGTCTTTCTTCGGTTC
TGATGAGCTTAGACGACATATGCGGGTACACACCAGATATCGACCATATAAATGTGATCAGTGCAGCCGG
GAGTTCATGAGGTCTGACCATCTCAAGCAACACCAGAAGACTCATCGGCCGGGACCTCAGACCCACAGG
CCAACAACAATGGAGAGCAGGACAGTCTCCTGCTGCTGGTCT

ACGCGTACGCGGCCGCTCGAGCAGAACTCATCTCAGAAGAGGATCTGGCAGCAATGATATCCTGGATT
ACAAGGATGACGACGATAAGGTTTAA



[View online >](#)

Protein Sequence: >RC208293 protein sequence
Red=Cloning site Green=Tags(s)

MYGRPQAEMEQEAGELSRWQAAHQAAQDNENSAPILNMSSSSGSSGVHTSWNQGLPTIQHFPHSAEMLGS
 PLVSVEAPGQNVNEGGPQFSMPLPERGMSYCPQATLTPSRMIYCQRMSPQEQEMTIFSGPQLMPVGE
 PNIPRVARPFGGNLRMPPSGLPVSASTGIPIMSHTGNPPVPYPGLSTVPSDETLTGPTVPSTEAQAVLP
 SMAQMLPPQDAHDLGMPPAESQSLLLVLSQDSLVSQPDSEGEFPLPEQPGAPQTVEKNSRPQEGTGR
 RGSSEA RPYCCNYENCGKAYTKRSHLVSHQRKHTGERPYSCNWCSCSWFFRSDELRRHMRVHTR
 YRYPYKCDQCSR EFMRSDDLKQHQKTHRPGSPDQANNNNGEQDSPAAGP

TRTRPLEQKLISEEDLAANDILDYKDDDDKV

Chromatograms: https://cdn.origene.com/chromatograms/mk6528_g04.zip

Restriction Sites: SgfI-MluI

Cloning Scheme:



ACCN: NM_173484

ORF Size: 1167 bp

OTI Disclaimer: The molecular sequence of this clone aligns with the gene accession number as a point of reference only. However, individual transcript sequences of the same gene can differ through naturally occurring variations (e.g. polymorphisms), each with its own valid existence. This clone is substantially in agreement with the reference, but a complete review of all prevailing variants is recommended prior to use. [More info](#)

OTI Annotation: This clone was engineered to express the complete ORF with an expression tag. Expression varies depending on the nature of the gene.

Components: The ORF clone is ion-exchange column purified and shipped in a 2D barcoded Matrix tube containing 10ug of transfection-ready, dried plasmid DNA (reconstitute with 100 ul of water).

Reconstitution Method:

1. Centrifuge at 5,000xg for 5min.
2. Carefully open the tube and add 100ul of sterile water to dissolve the DNA.
3. Close the tube and incubate for 10 minutes at room temperature.
4. Briefly vortex the tube and then do a quick spin (less than 5000xg) to concentrate the liquid at the bottom.
5. Store the suspended plasmid at -20°C. The DNA is stable for at least one year from date of shipping when stored at -20°C.

RefSeq: [NM_173484.2](#), [NP_775755.2](#)

RefSeq Size: 3131 bp

RefSeq ORF: 1170 bp

Locus ID: 128209

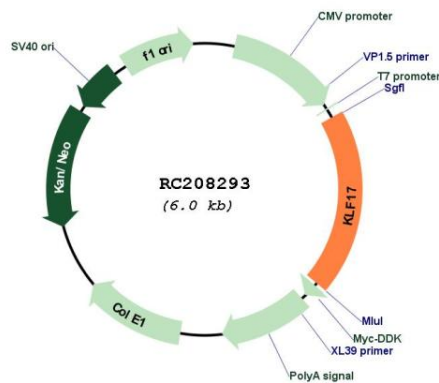
UniProt ID: [Q5JT82](#)

Cytogenetics: 1p34.1

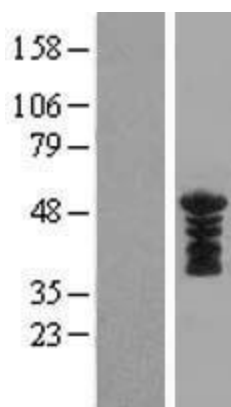
MW: 42.6 kDa

Gene Summary: Transcription repressor that binds to the promoter of target genes and prevents their expression. Acts as a negative regulator of epithelial-mesenchymal transition and metastasis in breast cancer. Specifically binds the 5'-CACCC-3' sequence in the promoter of ID1, a key metastasis regulator in breast cancer, and repress its expression. May be a germ cell-specific transcription factor that plays important roles in spermatid differentiation and oocyte development (By similarity).[UniProtKB/Swiss-Prot Function]

Product images:



Circular map for RC208293



Western blot validation of overexpression lysate (Cat# [LY406601]) using anti-DDK antibody (Cat# [TA50011-100]). Left: Cell lysates from untransfected HEK293T cells; Right: Cell lysates from HEK293T cells transfected with RC208293 using transfection reagent MegaTran 2.0 (Cat# [TT210002]).