

Product datasheet for RC208292

INO80E (NM_173618) Human Tagged ORF Clone

Product data:

Product Type:	Expression Plasmids
Product Name:	INO80E (NM_173618) Human Tagged ORF Clone
Tag:	Myc-DDK
Symbol:	INO80E
Synonyms:	CCDC95
Mammalian Cell Selection:	Neomycin
Vector:	pCMV6-Entry (PS100001)
E. coli Selection:	Kanamycin (25 ug/mL)
ORF Nucleotide Sequence:	>RC208292 ORF sequence Red=Cloning site Blue=ORF Green=Tags(s)

TTTTGTAATACGACTCACTATAGGGCGGCCGGAATTCGTCGACTGGATCCGGTACCGAGGAGATCTGCC
GCC**CGATCGCC**

ATGAACGGGCGCGGACGGCGAAGTGGACTACAAAAAATACCGGAATCTGAAGCGGAAGCTCAAGT
TCCTCATCTACGAGCAGAGTGCTTCCAGGAGGAGCTGAGGAAAGCGCAAAGGAAATTAAGAGGTGTC
CCGGGACAAGAGTTTCTCCTAGACCGACTTCTGCAGTACGAGAACGTTGATGAAGACTCTTCGGACTCA
GATGCCACTGCATCATCAGATAACAGCGAGACGGAGGGGACCCCAAGTTGTCTGACACACCGGCCCTA
AGAGGAAGAGAAGCCCTCCGCTGGGGGGCGCCCTCTCCCTCCAGCCTCTCCCTGCCTCCTTCAACAGG
GTTTCCCTTTCAGGCCTCCGGGTCCCCTCCCCATACCTGAGCTCGCTGGCTCCTCCCGTACCCCCA
TTCCCTTCTGACTACCTGGCCCTGCAGCTGCCGAGCCAGTCCCCTGAGGCCAAGCGGGAGAAACGGC
CCCGCTGCCCGGAAACTCAAGATGGCGGTGGGACCCCGACTGCCCTGTGGGAGGGCCGCTGACCTT
CCCTGGCCGGGTCTGGGGTGGGGTCCGGACAACCCTGACCCCTCCACCCCTAAGATGCCCCC
CCCACGATCCTGAGCACGGTCCCTCGGCAGATGTTTCAGCGATGCAGGTAGCGGGACGATGCCTGGATG
GAGACGATGACCTGGTATCGACATCCCGAG

ACGCGTACGCGGCCGCTCGAGCAGAACTCATCTCAGAAGAGGATCTGGCAGCAAATGATATCCTGGATT
ACAAGGATGACGACGATAAGGTTTAA



[View online »](#)

Protein Sequence: >RC208292 protein sequence
 Red=Cloning site Green=Tags(s)

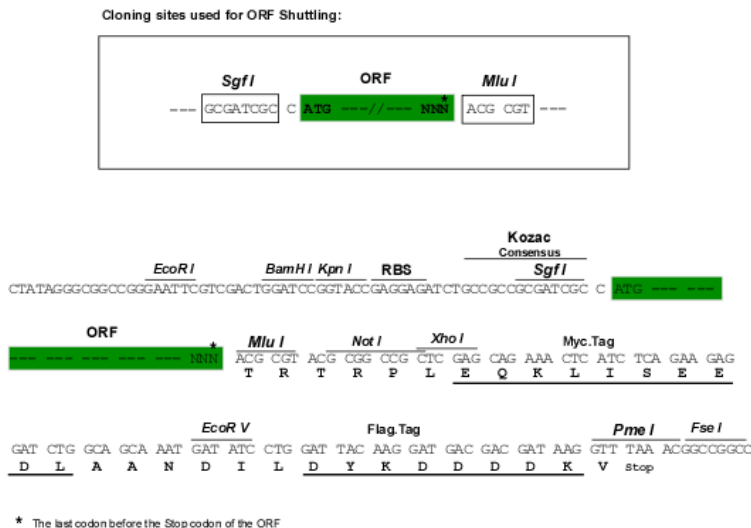
MNGPADGEVDYKKKYRNLRKLLKFLIYEHECFQEELRKAQRKLLKVSRDKSFLLDRLQYENVDEDESSDS
 DATASSDNSETEGTKLSDTPAPKRKRSPPLGGAPSPSSLSPSTGFPLQASGVPSPYLSSLASSRYPP
 FPSDYALALQLPEPSLPRPKREKRPRLPKLMKAVGPPDCPVGGPLTFPGRGSGAGVGTTLTPLPPPKMPP
 PTILSTVPRQMFSDAGSGDDALDGDDDLVIDIPE

TRTRPLEQKLISEEDLAANDILDYKDDDDKV

Chromatograms: https://cdn.origene.com/chromatograms/mk6350_g06.zip

Restriction Sites: SgfI-MluI

Cloning Scheme:



ACCN: NM_173618

ORF Size: 732 bp

OTI Disclaimer: The molecular sequence of this clone aligns with the gene accession number as a point of reference only. However, individual transcript sequences of the same gene can differ through naturally occurring variations (e.g. polymorphisms), each with its own valid existence. This clone is substantially in agreement with the reference, but a complete review of all prevailing variants is recommended prior to use. [More info](#)

OTI Annotation: This clone was engineered to express the complete ORF with an expression tag. Expression varies depending on the nature of the gene.

Components: The ORF clone is ion-exchange column purified and shipped in a 2D barcoded Matrix tube containing 10ug of transfection-ready, dried plasmid DNA (reconstitute with 100 ul of water).

Reconstitution Method:

1. Centrifuge at 5,000xg for 5min.
2. Carefully open the tube and add 100ul of sterile water to dissolve the DNA.
3. Close the tube and incubate for 10 minutes at room temperature.
4. Briefly vortex the tube and then do a quick spin (less than 5000xg) to concentrate the liquid at the bottom.
5. Store the suspended plasmid at -20°C. The DNA is stable for at least one year from date of shipping when stored at -20°C.

RefSeq: [NM_173618.3](#)

RefSeq Size: 1185 bp

RefSeq ORF: 735 bp

Locus ID: 283899

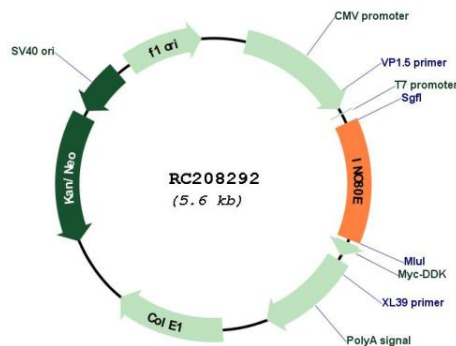
UniProt ID: [Q8NBZ0](#)

Cytogenetics: 16p11.2

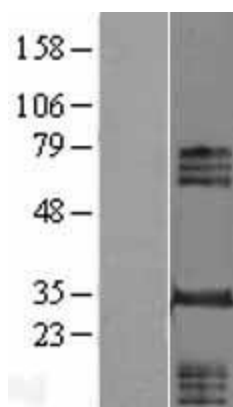
MW: 26.5 kDa

Gene Summary: Putative regulatory component of the chromatin remodeling INO80 complex which is involved in transcriptional regulation, DNA replication and probably DNA repair. [UniProtKB/Swiss-Prot Function]

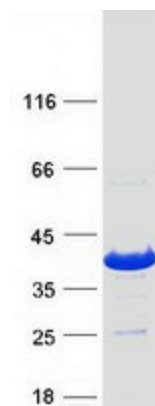
Product images:



Circular map for RC208292



Western blot validation of overexpression lysate (Cat# [LY406508]) using anti-DDK antibody (Cat# [TA50011-100]). Left: Cell lysates from untransfected HEK293T cells; Right: Cell lysates from HEK293T cells transfected with RC208292 using transfection reagent MegaTran 2.0 (Cat# [TT210002]).



Coomassie blue staining of purified INO80E protein (Cat# [TP308292]). The protein was produced from HEK293T cells transfected with INO80E cDNA clone (Cat# RC208292) using MegaTran 2.0 (Cat# [TT210002]).