

Product datasheet for RC208287

FBXO25 (NM_183421) Human Tagged ORF Clone

Product data:

Product Type:	Expression Plasmids
Product Name:	FBXO25 (NM_183421) Human Tagged ORF Clone
Tag:	Myc-DDK
Symbol:	FBXO25
Synonyms:	FBX25
Mammalian Cell Selection:	Neomycin
Vector:	pCMV6-Entry (PS100001)
E. coli Selection:	Kanamycin (25 ug/mL)
ORF Nucleotide Sequence:	>RC208287 ORF sequence Red=Cloning site Blue=ORF Green=Tags(s)

TTTTGTAATACGACTCACTATAGGGCGGCCGGAATTCGTCGACTGGATCCGGTACCGAGGAGATCTGCC
GCC**CGCATCGC**C

ATGCCATTTTGGGTGAGACTGGAGATCTCCTGGATGGAGTTGGATTAAGACAGAAGATGGCTGGAAGA
GATGTGAATCTTGTAGTCAGAACTTGAAGAGAGAATAACCATTGTAACATCAGTCACAGCATTATCTT
AAATAGTGAAGATGGAGAAATATCAATAATGAAGAGCATGAATATGCATCGAAAAAAGGAAAAAGGAC
CATTTTAGAAATGACACAAATACTCAAAGTTTTATCGTGAATAATGGATCTATGTCCATAAAGAAAAGCA
CAAAGGAAAGGCATGGCTATTGCACCTTGGGAGAAGCCTTTAATCGGTTAGACTTCTCAAGTCAATTCA
AGATATCCGAAGTTCAATTATGTGGTCAAACCTTGCAGCTAATTGCAAAATCCAGTTAACTTCATTG
AGTGGCGTGGCACAGAAGAATTACTTCAACATTTTGGATAAAAATCGTTCAAAGGTTCTTGTATGACCACC
ACAATCCTCGCTAATCAAAGATCTTCTGCAAGACCTAAGCTCTACCCCTGCTATTCTTATTAGAGGAGT
AGGGAAGTCTGTATTAGTGGAAACATCAATATTTGGATTTGCCGATTAGAACTATTCTCGCCTGGCAA
CAACAGCTACAGGATCTCAGATGACTAAGCAAGTGAACAATGGCCTCACCTCAGTGACCTTCTCTGC
ACATGCTGAACAACATCCTATACCGTTCTCAGACGGATGGGACATCATACCTTAGGCCAGGTGACCCC
CACGTTGTATATGCTTAGTGAAGACAGACAGCTGTGGAAGAAGCTTTGTCAAGTACATTTGCTGAAAAG
CAGTTTTGTAGACATTTGATCCTTTAGAAAAAGGTCATATTGAATGGAAGTTGATGACTTTGCACTTC
AGAAACATTACCCAGCGAAGGAGCAGTACGGAGACACACTGCATTTCTGTGCGCACTGCAGCATTCTCTT
TTGGAAGGACTACCATCTTGCTTACTATTCAAGGACTCAGGACACCCCTGCACGGCGGCCGACCCTGAC
AGCTGCTTACGCCTGTGTCTCCGACGACTTCATCGACCTTTCAAGTTT

ACGCGTACGCGGCCGCTCGAGCAGAACTCATCTCAGAAGAGGATCTGGCAGCAAATGATATCCTGGATT
ACAAGGATGACGACGATAAGGTTAA



[View online »](#)

Protein Sequence: >RC208287 protein sequence
Red=Cloning site Green=Tags(s)

MPFLGQDWRS PGWSWIKTEDGWKRCE SC SQKLERENHCNISHSII LNSEDGEIFNNEEHEYASKRKKD
 HFRNDTNTQSFYREKWIYVHKESTKERHGYCTLGEAFNRLDFSSAIQDIRRFNYVVKLLQLIAKSQ L TSL
 SGVAQKNYFNILDKIVQKVLDDHNPRLIKDLLQDLSSTLCILIRGVGKSVLVGNINIWICRLETILAWQ
 QQLQDLQMTKQVNNGLTSDLPLHMLNNILYRFS DGWDIITL GQVTP TL YML SEDRQLWKKLCQYHFAEK
 QFCRHLILSEKGHIEWKLMYFALQKHYP AKEQYGD TLHF CRHCSILFWKDYHLALLFKDSGHPCTAADPD
 SCFTPVSPQHFIDLFKF

TRTRPLEQKLISEEDLAANDILDYKDDDDKV

Chromatograms: https://cdn.origene.com/chromatograms/mk6350_b10.zip

Restriction Sites: SgfI-MluI

Cloning Scheme:



ACCN: NM_183421

ORF Size: 1101 bp

OTI Disclaimer: The molecular sequence of this clone aligns with the gene accession number as a point of reference only. However, individual transcript sequences of the same gene can differ through naturally occurring variations (e.g. polymorphisms), each with its own valid existence. This clone is substantially in agreement with the reference, but a complete review of all prevailing variants is recommended prior to use. [More info](#)

OTI Annotation: This clone was engineered to express the complete ORF with an expression tag. Expression varies depending on the nature of the gene.

Components: The ORF clone is ion-exchange column purified and shipped in a 2D barcoded Matrix tube containing 10ug of transfection-ready, dried plasmid DNA (reconstitute with 100 ul of water).

Reconstitution Method:

1. Centrifuge at 5,000xg for 5min.
2. Carefully open the tube and add 100ul of sterile water to dissolve the DNA.
3. Close the tube and incubate for 10 minutes at room temperature.
4. Briefly vortex the tube and then do a quick spin (less than 5000xg) to concentrate the liquid at the bottom.
5. Store the suspended plasmid at -20°C. The DNA is stable for at least one year from date of shipping when stored at -20°C.

Note: Plasmids are not sterile. For experiments where strict sterility is required, filtration with 0.22um filter is required.

RefSeq: [NM_183421.1](#), [NP_904357.1](#)

RefSeq Size: 2529 bp

RefSeq ORF: 1104 bp

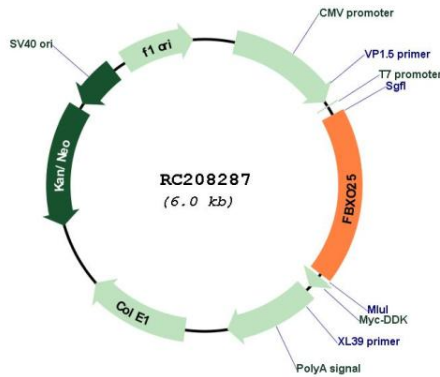
Locus ID: 26260

UniProt ID: [Q8TCJ0](#)

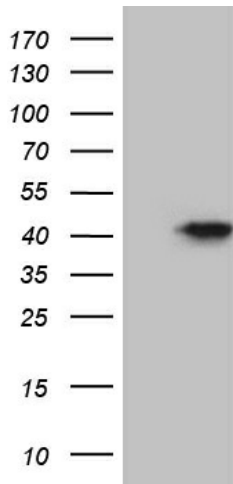
Cytogenetics: 8p23.3

MW: 43.3 kDa

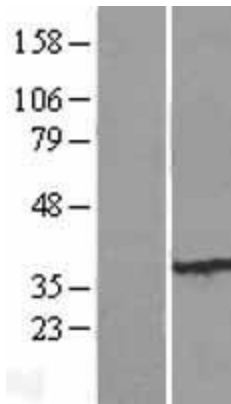
Gene Summary: This gene encodes a member of the F-box protein family which is characterized by an approximately 40 amino acid motif, the F-box. The F-box proteins constitute one of the four subunits of ubiquitin protein ligase complex called SCFs (SKP1-cullin-F-box), which function in phosphorylation-dependent ubiquitination. The F-box proteins are divided into 3 classes: Fbws containing WD-40 domains, Fbls containing leucine-rich repeats, and Fbxs containing either different protein-protein interaction modules or no recognizable motifs. The protein encoded by this gene belongs to the Fbxs class. Three alternatively spliced transcript variants encoding distinct isoforms have been found for this gene. [provided by RefSeq, Jul 2008]

Product images:


Circular map for RC208287



HEK293T cells were transfected with the pCMV6-ENTRY control (Cat# [PS100001], Left lane) or pCMV6-ENTRY FBXO25 (Cat# RC208287, Right lane) cDNA for 48 hrs and lysed. Equivalent amounts of cell lysates (5 ug per lane) were separated by SDS-PAGE and immunoblotted with anti-FBXO25 (Cat# [TA810351])(1:2000). Positive lysates [LY405203] (100ug) and [LC405203] (20ug) can be purchased separately from OriGene.



Western blot validation of overexpression lysate (Cat# [LY405203]) using anti-DDK antibody (Cat# [TA50011-100]). Left: Cell lysates from untransfected HEK293T cells; Right: Cell lysates from HEK293T cells transfected with RC208287 using transfection reagent MegaTran 2.0 (Cat# [TT210002]).