

Product datasheet for **RC208284**

RNF156 (MGRN1) (NM_015246) Human Tagged ORF Clone

Product data:

Product Type:	Expression Plasmids
Product Name:	RNF156 (MGRN1) (NM_015246) Human Tagged ORF Clone
Tag:	Myc-DDK
Symbol:	RNF156
Synonyms:	RNF156
Mammalian Cell Selection:	Neomycin
Vector:	pCMV6-Entry (PS100001)
E. coli Selection:	Kanamycin (25 ug/mL)



[View online »](#)

ORF Nucleotide Sequence:

>RC208284 ORF sequence
 Red=Cloning site Blue=ORF Green=Tags(s)

TTTTGTAATACGACTCACTATAGGGCGGCCGGGAATTCGTCGACTGGATCCGGTACCGAGGAGATCTGCC
 GCC**CGCATCGCC**

ATGGGCTCCATTCTCAGCCGCCGCATCGCGGGGTGGAGGACATCGACATCCAGGCGAAGCTCGGCCATC
 GCTACCCCTCCGAAGTCCGGAAACTACTTTGCTTCGCACTTTTTCATGGGAGGAGAGAAAATTCGACACCCC
 CCACCCTGAAGGTTACCTCTTTGGAGAGAACATGGATCTGAACCTCCTGGGCAGCCGCCCGTCCAGTTT
 CCCTACGTCACCTCTGCCCCCACGAGCCCGTGAAGACGCTGCGGAGCCTGGTGAACATCCGCAAAGACT
 CCCTGCGGCTGGTGAAGTACAAAGACGATGCCGACAGCCCAACCGAGGACGGCGACAAGCCCGGGTGT
 CTACAGCCTGGAGTTCACCTTCGACGCCGATGCCCGCTGGCCATCACCATCTACTGCCAGGCATCGGAG
 GAGTTCCTGAACGGCAGGGCAGTATACAGCCCCAAGAGCCCTCGCTACAGTCCGAGACCGTCCACTACA
 AGAGAGGGGTGAGCCAGCAGTTCTCCCTGCCCTCCTTCAAGATTGACTTCTCGGAATGGAAGGATGACGA
 GCTGAACCTTGGACCTGGACCGGGCGTGTTCAGTAGTCATCCAGGCTGTGGTGGACGAAGGAGATGTG
 GTGGAAGTGACTGGCCACGCCACGTGCTTGGCTGCCTTTGAAAAGCAGATGGACGGCAGCTTCTCTG
 TGAAGCCTTTAAAGCAGAAGCAAATTGTGGACCGGTCAGCTACCTCCTGCAGGAGATCTATGGCATTGA
 GAACAAGAACAACCAGGAGACCAAGCCCTCGGACGACGAGAACAGCGACAACAGCAACGAGTGTGTGGT
 TGCCCTGTCCGACCTGCGGGACACGCTGATCCTGCCCTGCCGCCACCTGTGCCTCTGTACCTCCTGCGCC
 ACACGCTGCGCTACCAGGCCAACAACTGCCCATCTGCCGGTGCCTTTCGGGCCCTCCTGCAGATCCG
 GGCGGTGCGGAAGAAGCCAGGAGCCCTGTCCCGGTGTCTTCAGCCCCGCTCCTGGCCAGAGCCTGGAG
 CATGATGAGCACTTTGTCCCTTTAAAAAATCAAAGCCGACCCCGCCTCCTGGCCAGCAAGAAACCTA
 AAAGGGAACAACAACCTGACAGCGTCCCACCTGGCTACGAGCCCATCTCGCTGCTCGAGGCGCTCAACGG
 CCTCCGGGTGTCTCCCGGCCATCCCCTCGGCCCTCTTATGAAGAAATCACCTATTCAGGCATCTCG
 GACGGCTGTCCAGGCCAGCTGTCCCCTCGCGGCTATCGACCACATCCTGGACAGCAGCCGCCAGAAGG
 GCAGGCCGAGAGCAAGGCCCGGACAGACCCTACGGTCCCGCTTCCCCATCCACGAAGAGGATGA
 GGAGAAGCTCTCCGAGGACGTGGACGCCCTCCCCACTGGTGGCGCAGAGCTGGCCCTGCGGAAAGC
 AGCTCCCTGAGAGTTTCATAACAGAAGAGTTGATGAGTCGTCGTACCACAGCAAGGGACCCGAGCAG
 CTTCCATTGAGAATGCTCAGGACAGCAGCCCCGAGCACTGTGGCCGAGGCCACCTGCTGACATCTA
 CCTGCCAGGACGGCCACCTCCATGGAGACGGCCACGGCCTCGCCACCACAGCCCCACCTGGCCTCA
 CTTGGTGGCCCCAGCCCCGATCCAGCGCCGCGAGCTGACCCCACT

ACGCGTACGCGGCCGCTCGAGCAGAAACTCATCTCAGAAGAGGATCTGGCAGCAAATGATATCCTGGATT
 ACAAGGATGACGACGATAAGGTTTAA

Protein Sequence:

>RC208284 protein sequence
 Red=Cloning site Green=Tags(s)

MGSILSRRIAGVEDIDIQANSAYRYPKSGNYFASHFFMGGEKFDTPHEGYLFGENMDLNLGSRPVQF
 PYVTPAPHEPVKTLRSLVNIRKDSLRLVRYKDDADSPTEGDGKPRVLYSLEFTFDADARVAITIIYQASE
 EFLNGRAVYSPKSPSLQSEVHYKRGVSQQFSLPSFKIDFSEWKDELNFDLDRGVFPVVIQAVVDEGDV
 VEVTGHAHVLLAAFEKHMDSFSVKPLKQKQIVDRVSYLLQEIIYGIENKNNQETKPSDDENSNSNECVV
 CLSDLRDTLILPCRHLCLCTSCADTLRYQANNCPICRLPFRALLQIRAVRKKPGALSPVSFSPVLAQSLE
 HDEHSCPFFKSKPHASLASKPKRETNDSVPPGYEPIISLLEALNGLRAVSPAIPSAPLYEEITYSGIS
 DGLSQASCPLAAIDHILDSSRQKGRPQSKAPDSTLRSPSSIHEEDEEKLSEDVDAPPPLGGAELALRES
 SSPESFITEEVDESSPQQGTRAASIENVLQDSSPEHCGRPPADIYLPGRPTSMETAHGLATTSPTWPP
 LGGSPDPSSAAELTPL

TRTRPLEQKLISEEDLAANDILDYKDDDDKV

Chromatograms:

https://cdn.origene.com/chromatograms/mk6350_f01.zip

Restriction Sites:

Sgfl-Mlul

Cloning Scheme:

ACCN: NM_015246

ORF Size: 1728 bp

OTI Disclaimer: Due to the inherent nature of this plasmid, standard methods to replicate additional amounts of DNA in E. coli are highly likely to result in mutations and/or rearrangements. Therefore, OriGene does not guarantee the capability to replicate this plasmid DNA. Additional amounts of DNA can be purchased from OriGene with batch-specific, full-sequence verification at a reduced cost. Please contact our customer care team at custsupport@origene.com or by calling 301.340.3188 option 3 for pricing and delivery.

The molecular sequence of this clone aligns with the gene accession number as a point of reference only. However, individual transcript sequences of the same gene can differ through naturally occurring variations (e.g. polymorphisms), each with its own valid existence. This clone is substantially in agreement with the reference, but a complete review of all prevailing variants is recommended prior to use. [More info](#)

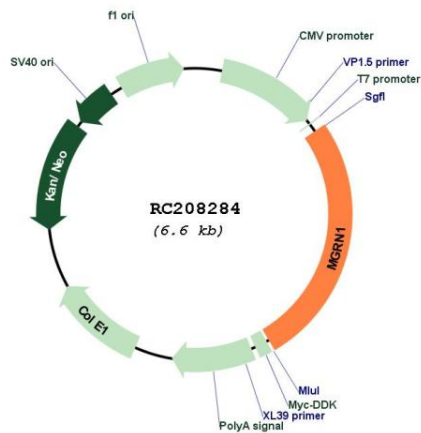
OTI Annotation: This clone was engineered to express the complete ORF with an expression tag. Expression varies depending on the nature of the gene.

Components: The ORF clone is ion-exchange column purified and shipped in a 2D barcoded Matrix tube containing 10ug of transfection-ready, dried plasmid DNA (reconstitute with 100 ul of water).

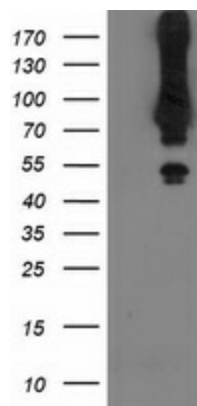
- Reconstitution Method:**
1. Centrifuge at 5,000xg for 5min.
 2. Carefully open the tube and add 100ul of sterile water to dissolve the DNA.
 3. Close the tube and incubate for 10 minutes at room temperature.
 4. Briefly vortex the tube and then do a quick spin (less than 5000xg) to concentrate the liquid at the bottom.
 5. Store the suspended plasmid at -20°C. The DNA is stable for at least one year from date of shipping when stored at -20°C.

RefSeq:	NM_015246.4
RefSeq Size:	3934 bp
RefSeq ORF:	1731 bp
Locus ID:	23295
UniProt ID:	O60291
Cytogenetics:	16p13.3
Protein Pathways:	Ubiquitin mediated proteolysis
MW:	63.2 kDa
Gene Summary:	Mahogunin (MGRN1) is a C3HC4 RING-containing protein with E3 ubiquitin ligase activity in vitro.[supplied by OMIM, Apr 2004]

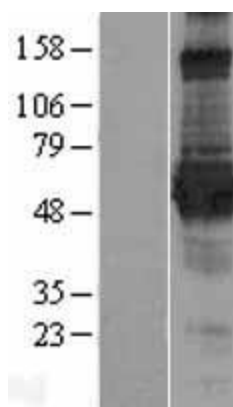
Product images:



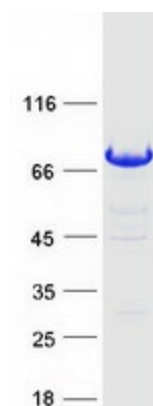
Circular map for RC208284



HEK293T cells were transfected with the pCMV6-ENTRY control (Cat# [PS100001], Left lane) or pCMV6-ENTRY MGRN1 (Cat# RC208284, Right lane) cDNA for 48 hrs and lysed. Equivalent amounts of cell lysates (5 ug per lane) were separated by SDS-PAGE and immunoblotted with anti-MGRN1(Cat# [TA502684]). Positive lysates [LY414714] (100ug) and [LC414714] (20ug) can be purchased separately from OriGene.



Western blot validation of overexpression lysate (Cat# [LY414714]) using anti-DDK antibody (Cat# [TA50011-100]). Left: Cell lysates from untransfected HEK293T cells; Right: Cell lysates from HEK293T cells transfected with RC208284 using transfection reagent MegaTran 2.0 (Cat# [TT210002]).



Coomassie blue staining of purified MGRN1 protein (Cat# [TP308284]). The protein was produced from HEK293T cells transfected with MGRN1 cDNA clone (Cat# RC208284) using MegaTran 2.0 (Cat# [TT210002]).