

Product datasheet for **RC208279**

SYS1 (NM_033542) Human Tagged ORF Clone

Product data:

Product Type: Expression Plasmids
Product Name: SYS1 (NM_033542) Human Tagged ORF Clone
Tag: Myc-DDK
Symbol: SYS1
Synonyms: C20orf169; dj453C12.4; dj453C12.4.1
Mammalian Cell Selection: Neomycin
Vector: pCMV6-Entry (PS100001)
E. coli Selection: Kanamycin (25 ug/mL)
ORF Nucleotide Sequence: >RC208279 ORF sequence
Red=Cloning site Blue=ORF Green=Tags(s)

TTTTGTAATACGACTCACTATAGGGCGGCCGGAATTCGTCGACTGGATCCGGTACCGAGGAGATCTGCC
GCC**CGATCGCC**

ATGGCGGGTCAGTTCGCGAGCTACGTGTGGACCCGCTGCTGATCCTGTGCGAGATCGTCTCATGCAGA
CCGTGTATTACGGCTCGTGGGCTGTGGCTGGCGCTGGTGGACGGGCTAGTGCGAAGCAGCCCCCTCGT
GGACCAGATGTTGACGCCGAGATCCTGGGCTTTCCACCCTCCAGGCCGGCTCTCCATGATGTCCTTC
ATCCTCAACGCCCTCACCTGTGCCCTGGGCTTGTGTACTTCATCCGGCAGGAAAGCAGTGTCTGGATT
TCACTGTCACTGTCCATTTCTTTCACCTCCTGGGCTGCTGGTTCTACAGCTCCCGTTTCCCCTCGGCGCT
GACCTGGTGGCTGGTCCAAGCCGTGTGCAATTGCACTCATGGCTGTATCGGGGAGTACCTGTGCATGCGG
ACGGAGCTCAAGGAGATACCCCTCAACTCAGCCCCAAATCCAATGTC

ACGCGTACGCGGCCGCTCGAGCAGAACTCATCTCAGAAGAGGATCTGGCAGCAAATGATATCCTGGATT
ACAAGGATGACGACGATAAGGTTTAA

Protein Sequence: >RC208279 protein sequence
Red=Cloning site Green=Tags(s)

MAGQFRSYVWPELLILSQIVLMQTVYYGSLGLWLALVDGLVRSSPSLDQMFDAEILGFSTPPGRLSMMSF
ILNALTALGLLYFIRRGKQCLDFVTVTVHFFHLLGCWFYSSRFPALSATWWLVQAVCIALMAVIGEYLCMR
TELKEIPLNSAPKSNV

TRTRPLEQKLISEEDLAANDILDYKDDDDKV

Chromatograms: https://cdn.origene.com/chromatograms/mk6350_a07.zip



Restriction Sites: SgfI-MluI

Cloning Scheme:



ACCN: NM_033542

ORF Size: 468 bp

OTI Disclaimer: The molecular sequence of this clone aligns with the gene accession number as a point of reference only. However, individual transcript sequences of the same gene can differ through naturally occurring variations (e.g. polymorphisms), each with its own valid existence. This clone is substantially in agreement with the reference, but a complete review of all prevailing variants is recommended prior to use. [More info](#)

OTI Annotation: This clone was engineered to express the complete ORF with an expression tag. Expression varies depending on the nature of the gene.

Components: The ORF clone is ion-exchange column purified and shipped in a 2D barcoded Matrix tube containing 10ug of transfection-ready, dried plasmid DNA (reconstitute with 100 ul of water).

Reconstitution Method:

1. Centrifuge at 5,000xg for 5min.
2. Carefully open the tube and add 100ul of sterile water to dissolve the DNA.
3. Close the tube and incubate for 10 minutes at room temperature.
4. Briefly vortex the tube and then do a quick spin (less than 5000xg) to concentrate the liquid at the bottom.
5. Store the suspended plasmid at -20°C. The DNA is stable for at least one year from date of shipping when stored at -20°C.

RefSeq: [NM_033542.4](#)

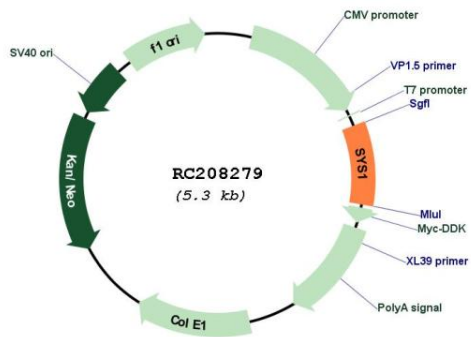
RefSeq Size: 2802 bp

RefSeq ORF: 471 bp

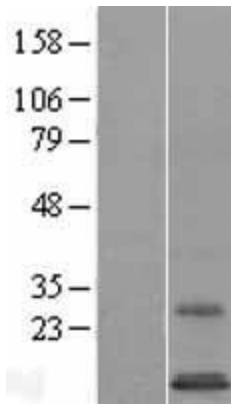
Locus ID: 90196

UniProt ID: [Q8N2H4](#)
 Cytogenetics: 20q13.12
 Protein Families: Transmembrane
 MW: 17.6 kDa
 Gene Summary: SYS1 forms a complex with ADP-ribosylation factor-related protein ARFRP1 (MIM 604699) and targets ARFRP1 to the Golgi apparatus (Behnia et al., 2004 [PubMed 15077113]).[supplied by OMIM, Aug 2009]

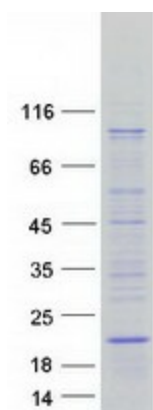
Product images:



Circular map for RC208279



Western blot validation of overexpression lysate (Cat# [LY409493]) using anti-DDK antibody (Cat# [TA50011-100]). Left: Cell lysates from untransfected HEK293T cells; Right: Cell lysates from HEK293T cells transfected with RC208279 using transfection reagent MegaTran 2.0 (Cat# [TT210002]).



Coomassie blue staining of purified SYS1 protein (Cat# [TP308279]). The protein was produced from HEK293T cells transfected with SYS1 cDNA clone (Cat# RC208279) using MegaTran 2.0 (Cat# [TT210002]).