

Product datasheet for **RC208276L3V**

CD3E (NM_000733) Human Tagged ORF Clone Lentiviral Particle

Product data:

Product Type:	Lentiviral Particles
Product Name:	CD3E (NM_000733) Human Tagged ORF Clone Lentiviral Particle
Symbol:	CD3E
Synonyms:	IMD18; T3E; TCRE
Mammalian Cell Selection:	Puromycin
Vector:	pLenti-C-Myc-DDK-P2A-Puro (PS100092)
Tag:	Myc-DDK
ACCN:	NM_000733
ORF Size:	621 bp
ORF Nucleotide Sequence:	The ORF insert of this clone is exactly the same as(RC208276).
OTI Disclaimer:	The molecular sequence of this clone aligns with the gene accession number as a point of reference only. However, individual transcript sequences of the same gene can differ through naturally occurring variations (e.g. polymorphisms), each with its own valid existence. This clone is substantially in agreement with the reference, but a complete review of all prevailing variants is recommended prior to use. More info
OTI Annotation:	This clone was engineered to express the complete ORF with an expression tag. Expression varies depending on the nature of the gene.
RefSeq:	NM_000733.2
RefSeq Size:	1534 bp
RefSeq ORF:	624 bp
Locus ID:	916
UniProt ID:	P07766
Cytogenetics:	11q23.3
Domains:	ITAM, IGc2
Protein Families:	Druggable Genome, Transmembrane



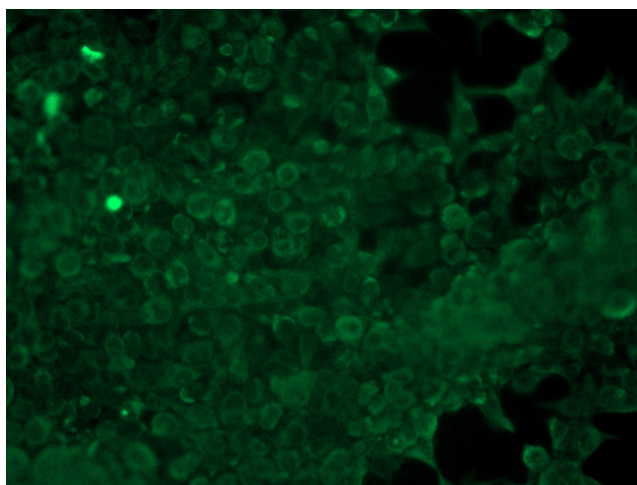
[View online »](#)

Protein Pathways: Hematopoietic cell lineage, Primary immunodeficiency, T cell receptor signaling pathway

MW: 23.1 kDa

Gene Summary: The protein encoded by this gene is the CD3-epsilon polypeptide, which together with CD3-gamma, -delta and -zeta, and the T-cell receptor alpha/beta and gamma/delta heterodimers, forms the T-cell receptor-CD3 complex. This complex plays an important role in coupling antigen recognition to several intracellular signal-transduction pathways. The genes encoding the epsilon, gamma and delta polypeptides are located in the same cluster on chromosome 11. The epsilon polypeptide plays an essential role in T-cell development. Defects in this gene cause immunodeficiency. This gene has also been linked to a susceptibility to type I diabetes in women. [provided by RefSeq, Jul 2008]

Product images:



[RC208276L3] was used to prepare Lentiviral particles using [TR30037] packaging kit. HEK293T cells were transduced with RC208276L3V particle to overexpress human CD3E-Myc-DDK fusion protein.