

Product datasheet for RC208275

Cathepsin W (CTSW) (NM_001335) Human Tagged ORF Clone

Product data:

Product Type:	Expression Plasmids
Product Name:	Cathepsin W (CTSW) (NM_001335) Human Tagged ORF Clone
Tag:	Myc-DDK
Symbol:	Cathepsin W
Synonyms:	LYPN
Mammalian Cell Selection:	Neomycin
Vector:	pCMV6-Entry (PS100001)
E. coli Selection:	Kanamycin (25 ug/mL)
ORF Nucleotide Sequence:	>RC208275 ORF sequence Red=Cloning site Blue=ORF Green=Tags(s)

TTTTGTAATACGACTCACTATAGGGCGCCGGGAATTCGTCGACTGGATCCGGTACCGAGGAGATCTGCC
GCC**CGATCGCC**

ATGGCACTGACTGCCACCCCTCCTGCCTCCTGGCCCTGTTGGTGGCAGGCCTAGCCCAAGGCATCAGAG
GCCCCCTTAGGGCCAGGACCTAGGTCCCCAGCCGCTAGAGCTGAAAGAGGCCTTCAAGTTGTTCCAGAT
CCAGTTCAACCGAGTTACCTGAGCCCAGAAGAGCATGCTCACCGCTGGACATCTTTGCCACAACCTG
GCCAGGCTCAGAGGCTCAGGAGGAGGACTTGGGCACAGCTGAGTTGGGGTACTCCATTCAAGTACC
TCACAGAGGAGGAGTTTGGCCAGCTCTATGGCTATCGGAGGGCAGCTGGAGGGTCCCCAGCATGGGCAG
AGAAATAAGGTCTGAAGAGCCAGAGGAGTCACTACCTTTCAAGTGTGACTGGCGGAAGGTGGCCGGCCG
ATCTCACCCATCAAGGACCAGAAAACTGCAACTGCTGCTGGGCCATGGCAGCGGAGGCAACATAGAGA
CCCTGTGGCGCATCAGTTTCTGGGATTTTGTGGACGTCTCCGTGCAGGAAGTGTGGACTGTGGCCGCTG
TGGGGATGGTGGCACGGTGGCTTCGTCTGGGACGCTTCATAACTGTCCTCAACAACAGCGGCCTGGCC
AGTGAAAAGGACTACCCGTTCCAGGGCAAAGTCAGAGCCACAGGTGCCACCCCAAGAAGTACCAGAAGG
TGGCCTGGATCCAGGACTTCATCATGCTGCAGAACACAGACAGAAATTGGCAGTACCTGGCCACTTA
TGGCCCCATCACCGTGACCCACAGCTTGTGGACCACTGTCTGCTGGTGGGTTTTGGCAGCGTCAAGTCAG
CCCACCACCTGTGACCCACAGCTTGTGGACCACTGTCTGCTGGTGGGTTTTGGCAGCGTCAAGTCAG
AGGAGGGGATATGGGCAGAGACAGTCTCATCGCAGTCTCAGCCTCAGCCTCCACACCCACCCCATACTG
GATCCTGAAGAACTCCTGGGGGGCCCAATGGGGAGAGAAGGGCTATTTCCGGCTGCACCGAGGGAGCAAT
ACCTGTGGCATCACCAAGTTCCTGCTCACTGCCCGTGTGCAGAAACCGGATATGAAGCCCGAGTCTCCT
GCCCTCC

AG**CGGACCG**ACGCGTACGCGGCCGCTCGAGCAGAACTCATCTCAGAAGAGGATCTGGCAGCAAATGATATCC
TGGATTACAAGGATGACGACGATAAGGTTTAA



[View online »](#)

Protein Sequence: >RC208275 protein sequence
Red=Cloning site Green=Tags(s)

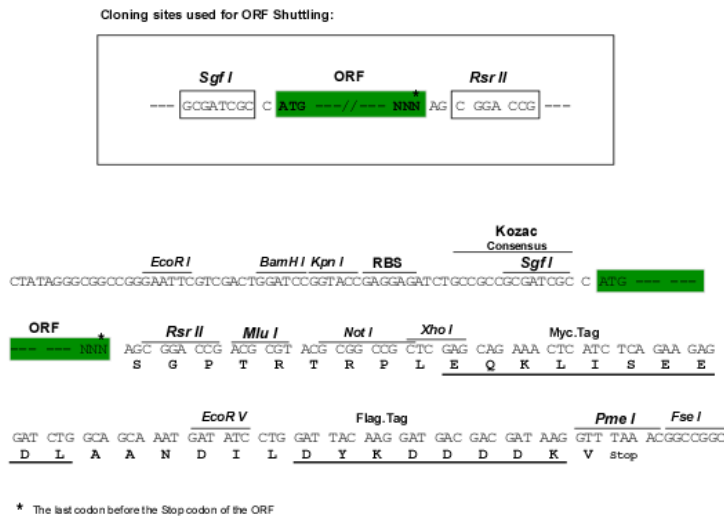
MALTAHPSCLLALLVAGLAQGIRGLRAQDLGPQPLELKEAFKLFQIQFNRSYLSPEEHAHRLDIFAHNL
 AQAQRLQEEDLGTAEFGVTPFSDLTEEEFGQLYGYRRAAGGVPSMGREIRSEEPEESVVPFSCDWRKVAGA
 ISPIKQKNCNCWAMAAAGNIETLWRISFWDVVDVSVQELLDGCRGDCGCHGGFVWDAFITVLNNSGLA
 SEKDYPFQGVRAHRCHPKKYQKVAWIQDFIMLQNEHRIAQYLATYGPITVTINMKPLQLYRKGVIKAT
 PTTCDPQLVDHSVLLVGFSGVKSEEGIWAETVSSQSQPPHPTPYWILKNSWGAQWGEKGYFRLHRGSN
 TCGITKFLPTARVQKPDMPKRVSCPP

SGPTRTRPLEQKLISEEDLAANDILDYKDDDDKV

Chromatograms: https://cdn.origene.com/chromatograms/mk6620_b09.zip

Restriction Sites: SgfI-RsrII

Cloning Scheme:



ACCN: NM_001335

ORF Size: 1128 bp

OTI Disclaimer: The molecular sequence of this clone aligns with the gene accession number as a point of reference only. However, individual transcript sequences of the same gene can differ through naturally occurring variations (e.g. polymorphisms), each with its own valid existence. This clone is substantially in agreement with the reference, but a complete review of all prevailing variants is recommended prior to use. [More info](#)

OTI Annotation: This clone was engineered to express the complete ORF with an expression tag. Expression varies depending on the nature of the gene.

Components: The ORF clone is ion-exchange column purified and shipped in a 2D barcoded Matrix tube containing 10ug of transfection-ready, dried plasmid DNA (reconstitute with 100 ul of water).

Reconstitution Method:

1. Centrifuge at 5,000xg for 5min.
2. Carefully open the tube and add 100ul of sterile water to dissolve the DNA.
3. Close the tube and incubate for 10 minutes at room temperature.
4. Briefly vortex the tube and then do a quick spin (less than 5000xg) to concentrate the liquid at the bottom.
5. Store the suspended plasmid at -20°C. The DNA is stable for at least one year from date of shipping when stored at -20°C.

RefSeq: [NM_001335.3](#), [NP_001326.2](#)

RefSeq Size: 1327 bp

RefSeq ORF: 1131 bp

Locus ID: 1521

UniProt ID: [P56202](#)

Cytogenetics: 11q13.1

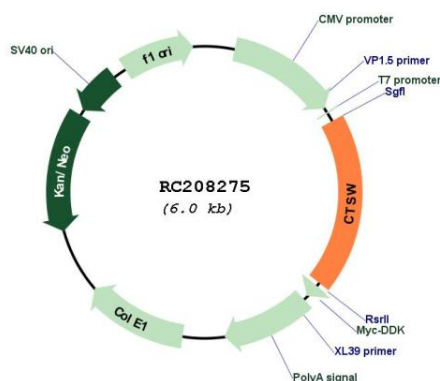
Protein Families: Druggable Genome, Protease

Protein Pathways: Lysosome

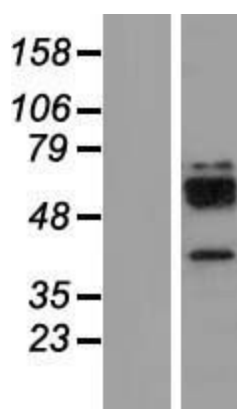
MW: 42.1 kDa

Gene Summary: The protein encoded by this gene, a member of the peptidase C1 family, is a cysteine proteinase that may have a specific function in the mechanism or regulation of T-cell cytolytic activity. The encoded protein is found associated with the membrane inside the endoplasmic reticulum of natural killer and cytotoxic T-cells. Expression of this gene is up-regulated by interleukin-2. [provided by RefSeq, Jul 2008]

Product images:



Circular map for RC208275



Western blot validation of overexpression lysate (Cat# [LY420009]) using anti-DDK antibody (Cat# [TA50011-100]). Left: Cell lysates from untransfected HEK293T cells; Right: Cell lysates from HEK293T cells transfected with RC208275 using transfection reagent MegaTran 2.0 (Cat# [TT210002]).