

Product datasheet for **RC208273**

OAS2 (NM_002535) Human Tagged ORF Clone

Product data:

Product Type:	Expression Plasmids
Product Name:	OAS2 (NM_002535) Human Tagged ORF Clone
Tag:	Myc-DDK
Symbol:	OAS2
Mammalian Cell Selection:	Neomycin
Vector:	pCMV6-Entry (PS100001)
E. coli Selection:	Kanamycin (25 ug/mL)



[View online »](#)

ORF Nucleotide Sequence:

>RC208273 ORF sequence
 Red=Cloning site Blue=ORF Green=Tags(s)

TTTTGTAATACGACTCACTATAGGGCGGCCGGAATTCGTCGACTGGATCCGGTACCGAGGAGATCTGCC
 GCC**CGGATCGCC**

ATGGGAAATGGGAGTCCAGCTGTCTCGGTGCCTGCTCAGAAGCTGGGTTGGTTTATCCAGGAATACC
 TGAAGCCCTACGAAGAATGTGACACTGATCGACGAGATGGTGAACACCATCTGTGACGCTCTGCAGGA
 ACCCGAACAGTTCCTCCCTGGTGCAGGGAGTGGCCATAGGTGGCTCCTATGGACGGAAAACAGTCTTAAGA
 GGCAACTCCGATGGTACCCTTGTCTCTTCTCAGTGACTTAAAACAATCCAGGATCAGAAGAGAAGCC
 AACGTGACATCCTCGATAAACTGGGGATAAGCTGAAGTTCTGTCTGTTACGAAGTGGTTGAAAAACA
 TTTGAGATCCAGAAGTCCCTTGTGGTTCCACATCCAGGTGTTACAAAAATCAGAGAATCTCTTTC
 GAGGTGCTGGCCGCTTCAACGCTCTGAGCTTAAATGATAATCCAGCCCTGGATCTATCGAGAGCTCA
 AAAGATCCTTGGATAAGACAAATGCCAGTCTGGTGGTGGTGGTGGTGGTGGTGGTGGTGGTGGTGGT
 GTTTTTTGACAACCGTCTGGAAAACTAAAGATTGATCCTCTTGATAAAGCACTGGCATCAACAGTGC
 CAGAAAAAATCAAGGATTTACCCTCGCTGTCTCCGTATGCCCTGGAGCTGTTACGGTGTATGCCTGGG
 AACAGGGTGCAGAAAAGACAATTTGACATTGCTGAAGGCGTCAGAACCCTTGGAGCTGATCAATG
 CCAGGAGAAGCTGTGATCTATTGGATGGTCAACTACAATTTGAAGATGAGACCATCAGGAACATCCTG
 CTGCACCAGCTCCAATCAGCGAGGCCAGTAATCTTGGATCCAGTTGACCCAACCAATAATGTGAGTGGAG
 ATAAAATATGCTGGCAATGGCTGAAAAAGAAGCTCAAACCTGGTTGACTTCTCCAACCTGGATAATGA
 GTTACCTGCACCATCTTGGAAATGTTCTGCCTGCACCACTTTCACGACCCAGGCCACCTTCTGGATAAG
 TTCATCAAGGAGTTTCTCAGCCCAACAATGCTTCTAGAGCAGATTGACAGTGTGTTAACATCATCC
 GTACATTCCTTAAAGAAAACGCTTCCGACAATCAACAGCCAAGATCCAGATTGTCGGGGAGGATCAAC
 CGCCAAAGGCACAGCTCTGAAGACTGGCTCTGATGCCGATCTCGTGTGTTCCATAAATCACTTAAAAGC
 TACACCTCCAAAAAACGAGCGGCACAAAATCGTCAAGGAAATCCATGAACAGCTGAAAGCCTTTTGG
 GGGAGAAGGAGGAGGAGCTTGAAGTCAAGTCTTGGAGCTTCCCAAGTGGAAAGGCTCCAGGGTGTGAGCTT
 CTCTCTGAAATCCAAAGTCTCAACGAAAGTGTCAAGTCTTGTGCTTCTGCTTTAATGCACTGGGT
 CAGCTGAGTCTGGCTCCACACCAGCCCGAGGTTTATGCAGGGCTCATTGATCTGTATAAATCCTCGG
 ACCTCCCGGGAGGAGGAGTTTTCTACCTGTTTACAGTCTGCAGCGAACTTCATTGCTCCCGGCCAC
 CAACTAAAGGATTTAATTCGCCTGGTGAAGCACTGGTACAAAGAGTGTGAAAGGAACTGAAGCCAAAG
 GGGTCTTTGCCCCAAAGTATGCCTTGGAGCTGCTCACCATCTATGCCTGGGAGCAGGGGAGTGGAGTGC
 CGGATTTTGACACTGCAGAAGGTTTCCGGACAGTCTGGAGCTGGTACACAATATCAGCAGCTCTGCAT
 TTCTGGAAGTCAATCAACTTTGAAGATGAGACCGTGGAGGAGTTTCTACTGAGCCAGTTGCAGAAA
 ACCAGGCTGTGATCTTGGACCCAGCCGAACCCACAGGTGACGTGGTGGAGGGGACCGTTGGTGTGGC
 ATCTTCTGGCAAAAGAAGCAAAGGAATGGTTATCCTCTCCCTGCTTCAAGGATGGGACTGGAACCCAAT
 ACCACCTTGGAAAGTCCCGTAAAAGTCATC

ACGCGTACGCGGCCGCTCGAGCAGAACTCATCTCAGAAGAGGATCTGGCAGCAATGATATCCTGGATT
 ACAAGGATGACGACGATAAGGTTTAA

Protein Sequence: >RC208273 protein sequence
Red=Cloning site Green=Tags(s)

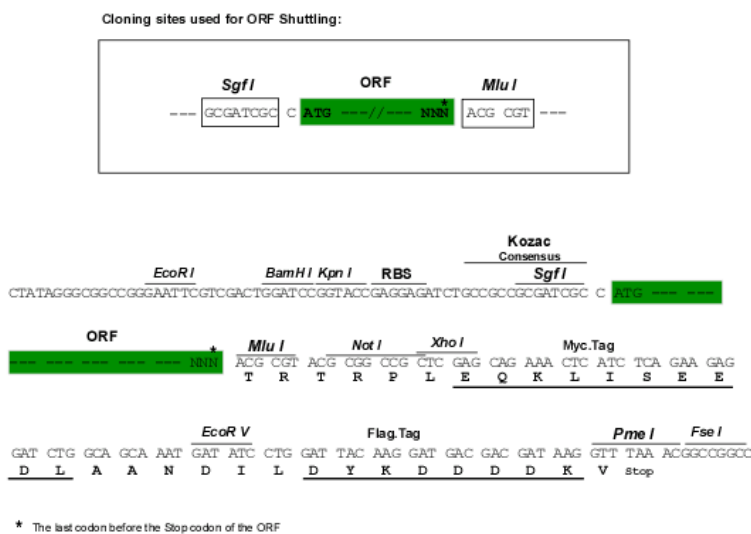
MNGESQLSSVPAQKLGWFIQEYLKPYEECQTLIDEMVNTICDVLQEPEQFPLVQGVAIGGSYGRKTVLR
 GNSDGTLLVFFSDLKQFQDKRSQRDILDKTGDKLKFCLFTKWLKNNFEIQKSLDGFTIQVFTKNQRISF
 EVLAAFNALSLNDNPPSWIYRELKRSLDKTNASPGFAVCFTLQKFFDNRPGKLDLILLIKHWHQOC
 QKKIKDLPSPYALELLTVYAWEQGCRKDNFDIAEGVRTVLELIKCEKLCIYWMVNYNFEDETIRNIL
 LHQLQSARPVILDPVPTNNVSGDKICWQWLKKEAQTWLTSPNLDNELPAPSWNVLPAPLFTTPGHLLDK
 FIKFELQPNKCFLEQIDSAVNIIRTFLKENCFRQSTAKIQIVRGGSTAKGTALKTGSDADLVVFNHSLKS
 YTSQKNERHKIVKEIHEQLKAFWREKEEELEVSFEPKWKAPRVSFSLKSKVLNESVSFDVLPAFNALG
 QLSSGSTPSPEVYAGLIDLYKSSDLPGGEFSTCFVLRNFIRSRPTKLDLIRLVKHWHYKECERLKP
 GSLPPKYALELLTIYAWEQGSGVPDFDTAEGFRTVLELVTQYQQLCFWKVNYNFEDETVRKFLLSQLQK
 TRPVILDPAEPTGDVGGDRWCWHLAKEAKEWLSSPCFKDGTGNPIPPWKVPVKVI

TRTRPLEQKLISEEDLAANDILDYKDDDDKV

Chromatograms: https://cdn.origene.com/chromatograms/mk6090_e12.zip

Restriction Sites: SgfI-MluI

Cloning Scheme:



ACCN: NM_002535

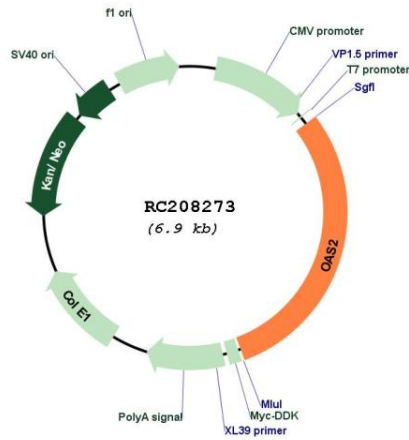
ORF Size: 2061 bp

OTI Disclaimer: The molecular sequence of this clone aligns with the gene accession number as a point of reference only. However, individual transcript sequences of the same gene can differ through naturally occurring variations (e.g. polymorphisms), each with its own valid existence. This clone is substantially in agreement with the reference, but a complete review of all prevailing variants is recommended prior to use. [More info](#)

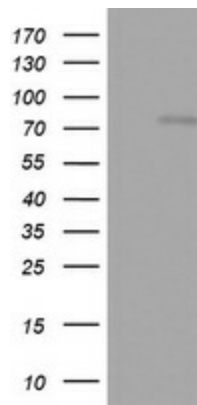
OTI Annotation: This clone was engineered to express the complete ORF with an expression tag. Expression varies depending on the nature of the gene.

Components:	The ORF clone is ion-exchange column purified and shipped in a 2D barcoded Matrix tube containing 10ug of transfection-ready, dried plasmid DNA (reconstitute with 100 ul of water).
Reconstitution Method:	<ol style="list-style-type: none">1. Centrifuge at 5,000xg for 5min.2. Carefully open the tube and add 100ul of sterile water to dissolve the DNA.3. Close the tube and incubate for 10 minutes at room temperature.4. Briefly vortex the tube and then do a quick spin (less than 5000xg) to concentrate the liquid at the bottom.5. Store the suspended plasmid at -20°C. The DNA is stable for at least one year from date of shipping when stored at -20°C.
RefSeq:	NM_002535.2 , NP_002526.2
RefSeq Size:	3647 bp
RefSeq ORF:	2064 bp
Locus ID:	4939
UniProt ID:	P29728
Cytogenetics:	12q24.13
Domains:	NTP_transf_2
Protein Families:	Druggable Genome
MW:	78.8 kDa
Gene Summary:	This gene encodes a member of the 2-5A synthetase family, essential proteins involved in the innate immune response to viral infection. The encoded protein is induced by interferons and uses adenosine triphosphate in 2'-specific nucleotidyl transfer reactions to synthesize 2',5'-oligoadenylates (2-5As). These molecules activate latent RNase L, which results in viral RNA degradation and the inhibition of viral replication. The three known members of this gene family are located in a cluster on chromosome 12. Alternatively spliced transcript variants encoding different isoforms have been described. [provided by RefSeq, Jul 2008]

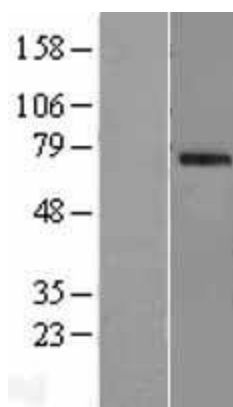
Product images:



Circular map for RC208273



HEK293T cells were transfected with the pCMV6-ENTRY control (Cat# [PS100001], Left lane) or pCMV6-ENTRY OAS2 (Cat# RC208273, Right lane) cDNA for 48 hrs and lysed. Equivalent amounts of cell lysates (5 ug per lane) were separated by SDS-PAGE and immunoblotted with anti-OAS2 (Cat# [TA802772]). Positive lysates [LY400905] (100ug) and [LC400905] (20ug) can be purchased separately from OriGene.



Western blot validation of overexpression lysate (Cat# [LY400905]) using anti-DDK antibody (Cat# [TA50011-100]). Left: Cell lysates from untransfected HEK293T cells; Right: Cell lysates from HEK293T cells transfected with RC208273 using transfection reagent MegaTran 2.0 (Cat# [TT210002]).