

Product datasheet for RC208267

Clathrin heavy chain (CLTC) (NM_004859) Human Tagged ORF Clone

Product data:

Product Type:	Expression Plasmids
Product Name:	Clathrin heavy chain (CLTC) (NM_004859) Human Tagged ORF Clone
Tag:	Myc-DDK
Symbol:	Clathrin heavy chain
Synonyms:	CHC; CHC17; CLH-17; CLTCL2; Hc; MRD56
Mammalian Cell Selection:	Neomycin
Vector:	pCMV6-Entry (PS100001)
E. coli Selection:	Kanamycin (25 ug/mL)
ORF Nucleotide Sequence:	>RC208267 representing NM_004859 Red=Cloning site Blue=ORF Green=Tags(s)

TTTTGTAATACGACTCACTATAGGGCGGCCGGAATTCGTCGACTGGATCCGGTACCGAGGAGATCTGCC
GCCCGATCGCC

ATGGCCAGATTCTGCCAATTCGTTTTTCAGGAGCATCTCCAGCTCCAGAACCTGGGTATCAACCCAGCAA
ACATTGGCTTCAGTACCCTGACTATGGAGTCTGACAAATTCATCTGCATTAGAGAAAAAGTAGGAGAGCA
GGCCAGGTGGTAATCATTGATATGAATGACCCAAGTAATCCAATTCGAAGACCAATTTCCAGCAGACAGC
GCCATCATGAATCCAGCTAGCAAAGTAATTGCACTGAAAGCTGGGAAAACCTTTCAGATTTTTAACATTG
AAATGAAAAGTAAAATGAAGGCTCATACCATGACTGATGATGTCACCTTTTGGAAATGGATCTCTTTGAA
TACGGTTGCTCTTGTACGGATAATGCAGTTTATCACTGGAGTATGGAAGGAGAGTCTCAGCCAGTGAAA
ATGTTTGTATCGCCATTCTAGCCTTGCAAGGTGCCAGATTATCAATTACCGTACAGATGCAAAACAAAAGT
GGTTACTTCTGACTGGTATATCTGCACAGCAAAAATCGTGTGGTGGGAGCTATGCAGCTATATTCTGTAGA
TAGGAAAGTGTCTCAGCCATTGAAGGACATGCAGCTAGCTTTGCACAGTTAAGATGGAAGGAAATGCA
GAAGAATCAACGTTATTTTGTTCAGTTTCGGGGCAAGCTGGAGGGAAGTTACATATTATTGAAGTTG
GCACACCCTACAGGGAACAGCCCTTCCAAGAAGGCAGTGGATGTCTTCTTCCAGAAGCACA
AAATGATTTTCTGTTGCAATGCAGATCAGTGAAGCATGATGTGGTGTCTTGATAACCAAGTATGGT
TATATCCACCTCTATGATCTTGAGACTGGTACCTGCATCTACATGAATAGAATCAGTGGAGAAACAATTT
TTGTTACTGCACCTCATGAAGCCACAGCTGGAATAATTGGAGTAAACAGAAAGGGACAAGTTCTGTCAGT
GTGTGTGGAAGAAGAAAACATAATTCCTTACATACCAATGTTCTACAAAATCCTGATTTGGCTCTGAGA
ATGGCTGTACGTAATAACTTAGCCGGTGTGAAGAACTTTTGCCCGAAATTTAATGCTCTTTTGCC
AGGGAATTAAGGAGGAGCAGCAAGGTGGCTGCTAATGCACCAAGGGAATTTCTCGTACTCCAGACAC
TATCCGTCGGTTCAGAGTGTCCAGCCAGCCAGGTCAAACCTTCTCTACTTCACTTGGTATC
CTTTTGGACCAGGACAGCTCAACAAATACGAATCCTTAGAGCTTTGTAGGCCTGTACTTCAGCAAGGGC
GAAAACAGCTTTTGGAGAAATGGTTAAAAGAAGATAAGCTGGAATGTTCTGAAGAACTGGGTGATCTTGT
GAAATCTGTGGACCCTACATTGGCACTTAGTGTGTACCTAAGGGCTAACGTCCCAATAAAGTCATTGAG



[View online >](#)

TGCTTTGCAGAAACAGGTCAAGTCCAAAAGATTGTTTTATATGCTAAAAAGTTGGATACACTCCAGATT
 GGATATTTCTGCTGAGAAATGTAATGCGAATCAGTCCAGATCAGGGACAGCAGTTTGCCCAAATGTTAGT
 TCAAGATGAAGAGCCTCTTGCTGACATCACACAGATTGTAGATGTCTTTATGGAATACAATCTAATTCAG
 CAGTGTACTGCATTCTTGCTTGATGCTCTGAAGAATAATCGCCCATCTGAAGGTCCTTTACAGACGCGGT
 TACTTGAGATGAACCTTATGCATGCGCCTCAAGTTGCAGATGCTATTCTAGGCAATCAGATGTTACACACA
 TTATGACCGGGCTCATATTGCTCAACTGTGTGAAAAGGCTGGCCTACTGCAGCGTGCATTAGAACATTTCT
 ACTGATTATATGATATAAAACGTGCAGTGGTTCACACCCATCTTCTTAACCCCTGAGTGGTTAGTCAACT
 ACTTTGGTTCCTTATCAGTAGAAGACTCCCTAGAATGTCTCAGAGCCATGCTGTCTGCCAACATCCGTCA
 GAATCTGCAGATTTGTGTTCAAGGTTCTTAAATATCATGAACAACCTGTCAACTCAGTCTCTGATTGAA
 CTTTTTGAATCTTTCAAGAGTTTTGAAGGTCTCTTTATTTTCTGGGATCCATTGTTAACTTTAGCCAGG
 ACCCAGATGTGCACCTTTAAATATATTACAGGAGCTTGCAAGACTGGGCAAATCAAAGAAGTAGAAAAGAT
 CTGTAGAGAAAGCAACTGCTACGATCCTGAGCGAGTCAAGAAATTTCTTAAGGAAGCAAACTAACAGAT
 CAGCTACCACTTATCATTGTGTGTGATCGATTTGACTTTGTCCATGATTTGGTGTCTATTTATATAGAA
 ATAATCTTCAAAGTATATAGAGATATATGTACAGAAGGTGAATCCAAGTCGACTTCTGTAGTTATTGG
 AGGATTACTTGATGTTGACTGTTCTGAAGATGTCATAAAAACTTGATTCTTGTGTAAGAGGTCAATTC
 TCTACTGATGAGCTTGTGCTGAGGTTGAAAAAGAAACAGATTGAAACTGCTTCTGCCTTGGCTAGAGG
 CCAGAATTCATGAGGGCTGTGAGGAGCCTGCTACTCACAATGCCTTAGCCAAAATCTACATAGACAGTAA
 TAACAACCCGGAGAGATTTCTTCGTGAAAAATCCCTACTATGACAGTCGCGTTGTTGGAAAGTATTGTGAG
 AAGAGAGATCCACATCTGGCCTGTGTTGCTTATGAACGTGGCCAAATGTGATCTGGAACCTTATTAATGTTT
 GCAATGAGAATCCCTCTTCAAAGTCTTCTCGCTACCTGGTACGTGAAAGGATCCAGAATTTGGGG
 CAGCGTGTCTGGAAGCAATCCTTACAGGAGACCCCTAATTGACCAGGTTGTACAAACAGCTTTGTCT
 GAGACTCAGGACCCTGAAGAAGTGTGAGTAACTGTAAGGCTTTCATGACTGCAGACCTTCTAATGAAC
 TCATTGAACTGCTGGAGAAAATTTGCTTGAATACTCTGATTCAGTGAACACAGGAATTCGAAAACCT
 CCTTATCCTCACTGCAATTAAGGCTGACCGTACACGTGTTATGGAGTATATTAACCCGCTGGATAATTAT
 GATGCCCCAGATATTGCCAATATCGCCATCAGCAATGAGCTGTTTGAAGAAGCATTGGCCATTTCCGGA
 AATTTGATGTCAATACTTCAGCAGTTCAGGTCTTAATTGAGCATATTGGAACCTGGATCGGGCATATGA
 GTTTGCTGAACGTTGCAATGAACCTGCGGTCTGGAGTCAACTTGCAAAAGCCAGTTGCAGAAAGGAATG
 GTGAAAGAAGCCATTGATTCTTATCAAAGCAGATGATCCTTCTCTACATGGAAGTTGTTCAAGGCTG
 CCAATACTAGTGGAACTGGGAAGAACTGGTGAAGTACTGCAGATGGCCCGTAAAGAAGGCTCGAGAGTC
 CTATGTGGAGACAGAAGTATTCGCACTGGCTAAAACAACCCGCTTGCAGAGTTAGAAGAATTTATC
 AATGGACCAAATATGCTCATATCCAACAAGTTGGTGACCGTTGTTATGATGAAAAATGTATGATGCTG
 CTAAGTTGTTGTACAATAATGTTTCCAATTTGGACGTTTGGCATCTACCCTGGTTCACCTGGGTGAATA
 TCAGGCAGCTGTTGATGGGGCTAGGAAAGCTAACAGTACTCGAACATGGAAGAGGTTGCTTCCGCTGT
 GTAGATGGGAAAGAAATCCGCTCTTGCTCAGATGTGTGGACTTCATATTGTTGTACATGCAGATGAATTAG
 AAGAACTTATCAACTACTATCAGGATCGTGCTATTTTGAAGAGCTGATCACCATGTTGGAAGCAGCACT
 GGGACTTGAGCGAGCTCACATGGGAATGTTTACTGAATTAGCTATTCTATACTCTAAATTAAGCCTCAG
 AAAATGAGGGAGCACCTGGAGCTGTTCTGGTCTAGAGTGAATATCCCAAGGTGCTAAGAGCTGCAGAAC
 AAGCTCATCTTTGGGCAGAACTGGTGTGTTTGTATGACAAGTATGAAGAATATGATAATGCCATAATTA
 CATGATGAATCATCCAAGTATGCTGCAAGAAAGGGCAATTCAAAGATATCATTACCAAGTTGCCAAT
 GTGGAATACTACAGAGCAATACAGTTCTACTTAGAATTCAGCCTCTGTTGTTAAATGATTGTGCTGA
 TGGTGCTGTCTCCACGGTTGGATCACACTCGTGCAGTCAATTATTTAGCAAGGTTAAACAGCTACCACT
 GGTGAAACCGTATTTGCGTTCAGTTCAGAACCATAAACAATACTGTGAATGAATCATTGAACAATCTT
 TTTATTACAGAAGAAGATTATCAGGCTCTGCAACATCAATAGATGCTTATGACAACCTTTGACAATATCT
 CGCTTGCTCAGCGTTTGGAAAAACATGAACTCATTGAGTTCAGGAGAAATGCTGCTTATCTCTTCAAAGG
 CAACAATCGTGGAAACAGAGTGTAGAGCTGTGCAAGAAAGACAGCCTTACAAGGATGCAATGCAGTAT
 GCTTCTGAATCTAAAGATACTGAATTGGCTGAAGAAGTCTGCAAGTGGTTTTTGCAGGAAGAAAAAGAG
 AGTGCTTTGGAGCTTGTCTGTTTACCTGTTACGATCTTTTAAAGCCAGATGTCGCTCTAGAACTGCATG
 GAGGCACAATATCATGGATTTTGCATGCCCTATTTATCCAGGTCATGAAGGAGTACTTGACAAAGGTG
 GATAAATTAGATGCTTCAAGATCACTGAGAAAAGAAGAACAAGCTACAGAGACACAACCCATTGTTT
 ATGGTCAGCCCCAGTTGATGCTGACAGCAGGACCCAGTGTGCGCTCCCTCCCCAGGCACCTTTTGGTTA
 TGGTTATACCGCACCCCGTATGGACAGCCACAGCCTGGCTTTGGGTACAGCATG

ACGCGTACGCGGCCGCTCGAGCAGAACTCATCTCAGAAGAGGATCTGGCAGCAAATGATATCCTGGATT
ACAAGGATGACGACGATAAGGTTTAA

Protein Sequence:

>RC208267 representing NM_004859
Red=Cloning site Green=Tags(s)

MAQILPIRFQEHLLQLNLGINPANIGFSTLTMESDKFICIREKVGQAQVVIIDMNDPSNPIRRPISADS
AIMNPASKVIALKAGKTLQIFNIEMKSKMKAHTMTDDVTFWKWISLNTVALVTDNAVYHWSMEGESQPVK
MFDHRSSLAGCQIINYRTDAKQKWLTLTGISAQQNRVVGAMQLYSVDRKVSQPIEGHAASFAQFKMEGNA
EESTLFCFAVRGQAGGKLHIEVGTPTGNQPPFKKAVDVFFPPEAQNDFPVAMQISEKHADVFLITKYG
YIHLVDLETGTCIYMNRISETIFVTAPHEATAGIIGVNRKQVLSVCVEEENIIPYITNVLQNPDLALR
MAVRNLAGAEELFARKFNALFAQGNYSAAKVAANAPKGI LRTPDTRIRRFQSVPAQPGQTSPLLQYFGI
LLDQGLNKYESLELCPVLLQGRKQLLEKWLKEDKLECEELGDLVKSVDPTLALSVYLRANVPNKVIQ
CFAETGQVQKIVLYAKKVGYPDWIFLLRNVMRI SPDQGGQFAQMLVQDEEPLADITQIVDVFMENLIQ
QCTAFLLDALKNNRPSGGLQTRLLEMNLMHAPQVADAILGNQMFTHYDRAHIAQLCEKAGLLQRALEHF
TDLYDIKRAVVHHTLLNPEWLVNYFGSLSVEDSLECLRAMLSANIRQLQICVQVASKYHEQLSTQSLIE
LFESKSFEGFLYFLGSI VNFSDQPDVHFYKIQAACTGQI KEVERICRESNCYDPERVKNFLKEAKLTD
QLPLIIVCDRDFVHDLVLYLRNNLQKYIEIYVQKVNPSRLPVVIGGLLDVDCSEDIKNLILVVRGQF
STDELVAEVEKRNRLKLLPWLEARIHEGCEEPATHNALAKIYIDSNNNPERFLRENPPYDSRVVGKYCE
KRDPHLACVAYERGQCDLELINVCNENSLFKLSRYL VRRKDPELWGSVLLSNPYRRLIDQVVQTALS
ETQDPEEVSVTVKAFMTADLPNELIELLEKIVLDNSVFSEHRNLQNLILTAIKADRTRVMEYINRLDNY
DAPDIANIAISNELFEEAFI FRKFDVNTSAVQVLI EHGNDLDRAYEFAERCNEPAVWSQLAKAQLQKGM
VKEAIDSYIKADDPSSYMEVVQAANTSGNWEELVKYLQMARKKARESYVETELIFALAKTNRLAELEEF
NGPNNAIQQVGDRCYDEKMYDAKLL YNNVSNFGRLASTLVHLGEYQAAVDGARKANSTRTWKEVCFAC
VDGKEFRLAQMCGLHIVVHADELEELINYYQDRGYFEEITMLEAALGLERAHMGMTLAILYSKFKPQ
KMREHLELFWSRVNI PKVLRAAEQHLWAEVFLYDKYEEYDNAIITMMNHPTDAWKEGQFKDIITKVAN
VELYYRAIQFYLEFKPLLLNDLLMVLSPRLDHTRAVNYFSKVKQLPLVKPYLRVQNHNNKSVNESLNNL
FIT EEDYQALRTSIDAYDNFDNISLAQRLEKHELIEFRRIAAYLFGNNRWKQSVELCKKDSL YKDAMQY
ASESKDTELAEELLQWFLQEERECFGACLFTCYDLLRPDVVLETAWRHNIMDFAMPYFIQVMKEYLTKV
DKLDASESLRKEEQATETQPIVYGQPQLMLTAGPSVAVPPQAPFGYGYTAPPYGPQPGFGYSM

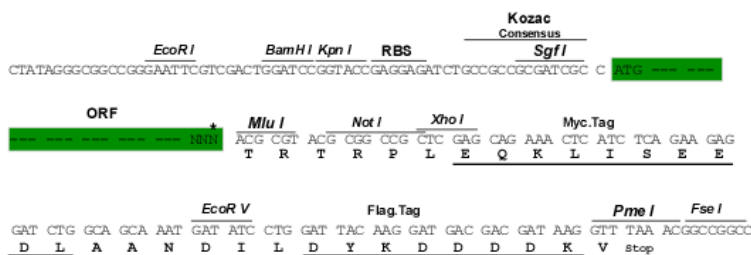
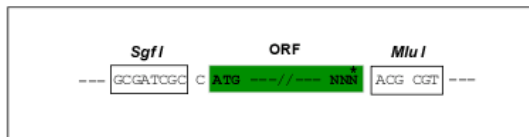
TRTRPLEQKLISEEDLAANDILDYKDDDDKV

Restriction Sites:

Sgfl-MluI

Cloning Scheme:

Cloning sites used for ORF Shuttling:



* The last codon before the Stop codon of the ORF

ACCN: NM_004859

ORF Size: 5025 bp

OTI Disclaimer: Due to the inherent nature of this plasmid, standard methods to replicate additional amounts of DNA in E. coli are highly likely to result in mutations and/or rearrangements. Therefore, OriGene does not guarantee the capability to replicate this plasmid DNA. Additional amounts of DNA can be purchased from OriGene with batch-specific, full-sequence verification at a reduced cost. Please contact our customer care team at custsupport@origene.com or by calling 301.340.3188 option 3 for pricing and delivery.

The molecular sequence of this clone aligns with the gene accession number as a point of reference only. However, individual transcript sequences of the same gene can differ through naturally occurring variations (e.g. polymorphisms), each with its own valid existence. This clone is substantially in agreement with the reference, but a complete review of all prevailing variants is recommended prior to use. [More info](#)

OTI Annotation: This clone was engineered to express the complete ORF with an expression tag. Expression varies depending on the nature of the gene.

Components: The ORF clone is ion-exchange column purified and shipped in a 2D barcoded Matrix tube containing 10ug of transfection-ready, dried plasmid DNA (reconstitute with 100 ul of water).

Reconstitution Method:

1. Centrifuge at 5,000xg for 5min.
2. Carefully open the tube and add 100ul of sterile water to dissolve the DNA.
3. Close the tube and incubate for 10 minutes at room temperature.
4. Briefly vortex the tube and then do a quick spin (less than 5000xg) to concentrate the liquid at the bottom.
5. Store the suspended plasmid at -20°C. The DNA is stable for at least one year from date of shipping when stored at -20°C.

RefSeq: [NM_004859.4](#)

RefSeq Size: 6541 bp

RefSeq ORF: 5028 bp

Locus ID: 1213

UniProt ID: [Q00610](#)

Cytogenetics: 17q23.1

Domains: Clathrin, Clathrin_propel

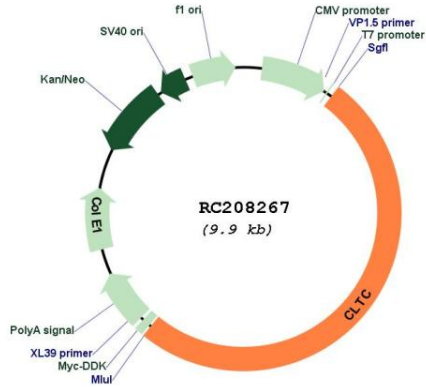
Protein Pathways: Endocytosis, Huntington's disease, Lysosome

MW: 191.4 kDa

Gene Summary:

Clathrin is a major protein component of the cytoplasmic face of intracellular organelles, called coated vesicles and coated pits. These specialized organelles are involved in the intracellular trafficking of receptors and endocytosis of a variety of macromolecules. The basic subunit of the clathrin coat is composed of three heavy chains and three light chains. [provided by RefSeq, Jul 2008]

Product images:



Circular map for RC208267