

Product datasheet for RC208265

DRAK1 (STK17A) (NM_004760) Human Tagged ORF Clone

Product data:

Product Type:	Expression Plasmids
Product Name:	DRAK1 (STK17A) (NM_004760) Human Tagged ORF Clone
Tag:	Myc-DDK
Symbol:	DRAK1
Synonyms:	DRAK1
Mammalian Cell Selection:	Neomycin
Vector:	pCMV6-Entry (PS100001)
E. coli Selection:	Kanamycin (25 ug/mL)
ORF Nucleotide Sequence:	>RC208265 representing NM_004760 Red=Cloning site Blue=ORF Green=Tags(s)

TTTTGTAATACGACTCACTATAGGGCGGCCGGAATTCGTCGACTGGATCCGGTACCGAGGAGATCTGCC
GCC**CGATCGCC**

ATGATCCCTTTGGAGAAGCCAGGCAGGCGGGCTCCTCCCAGGCGCCACCTCAGGCTCGGGCCGGGCAG
GCCGGGTCTGAGCGGGCCGTGCCGGCCCGCCGCCAGGCCCGGGCTGCTGACAGAGATACG
CGCCGTGGTGCACCGAGCCCTCCAGGACGGCTACAGCCTGTGCCGGCCGGGAGCTGGGCAGGGG
AAATTTGCAGTGGTGAGAAAATGTATAAGAAAGATTCTGGAAAGAATTTGCTGCAAAGTTCATGAGAA
AAAGAAGAAAAGCCAAGATTGTCGGATGGAAATAATTCATGAGATTGCTGTACTGAAGTGCACAAGA
CAATCCTTGGGTCAATAATTTACATGAAGTTTATGAGACTGCATCAGAAATGATCTTAGTTCTGGAATAT
GCTGCTGGGGTGAAATCTTTGACCAGTGTGTTGCAGACAGAGAAGAAGCCTTTAAAGAAAAAGATGTT
AAAGACTTATGCGACAGATTTTAGAAGGTGTTCACTTTTTACACACTCGTGATGTAGTTCATCTTGATTT
GAAGCCTCAGAATATTCTGTTGACAAGTGAATCTCCATTGGGTGACATTAAGATTGTTGATTTTGGCCTT
TCAAGAATATTGAAGAACAGTGAAGAGCTCCGAGAAATATGGGTACCCCTGAATATGTGGCTCCTGAAA
TTCTTAGTTATGATCCTATAAGCATGGCAACAGATATGTGGAGCATTGGAGTGTTAACATATGTCATGCT
TACAGGAATATCACCTTTCTTAGGCAATGATAACAAGAAACATCTTAAACATCTCACAGATGAATTTA
AGTTATTCTGAGGAAGAATTTGATGTTTTGTCTGAGTCGGCTGTTGATTTTCATCAGGACACTTTTAGTTA
AGAAACCTGAAGATCGAGCCACTGCTGAAGAATGTCTAAAGCACCCCTGGTTGACACAGAGCAGTATTCA
AGAGCCTTCTTTAGGATGGAAAAGGCACTAGAAGAAGCAAATGCCCTCCAAGAAGGTCATTCTGTGCCT
GAAATTAATTCGGATACCGACAAATCAGAAACCGAGGAATCCATTGTAACCGAAGAGTTAATTTAGTGA
CTTCATATACTCTAGGACAATGCAGACAGTCTGAAAAAGAGAAAATGGAGCAAAGGCCATTTCCAAACG
ATTTAAATTTGAGGAACCTTTGCTACAAGAAATCCAGGAGAATTTATCTAC

ACGCGTACGCGGCCGCTCGAGCAGAACTCATCTCAGAAGAGGATCTGGCAGCAAATGATATCCTGGATT
ACAAGGATGACGACGATAAGGTTTAA



Protein Sequence: >RC208265 representing NM_004760
Red=Cloning site Green=Tags(s)

MIPLEKPGSGGSSPGATSGSGRAGRGLSGPCRPPPPQARGLLTEIRAVVRTEPFQDGYSLCPGRELGRG
 KFAVVRKCIKDSGKEFAAKFMRKRRKQDCRMEIIEIHAVLELAQDNPWVINLHEVYETASEMILVLEY
 AAGGEIFDQCVDREEAFKEKDVQRLMRQILEGVHFLHTRDVVHLDLKPQNILLTSESPLGDIKIVDFGL
 SRILKNEELREIMGTPEYVAPEILSYDPI SMATDMWSIGVLTYVMLTGISPFLGNDKQETFLNISQMNL
 SYSEEEFDVLSSEAVDFIRTLVKKPEDRATAEECLKHPWLTQSSIQEPSFRMEKALEEANALQEGHSVP
 EINSDDTKSETESIVTEELIVVTSYTLGQCRQSEKEKMEQKAI SKRFKFEPELLQEIPGEFIY

TRTRPLEQKLISEEDLAANDILDYKDDDDKV

Chromatograms: https://cdn.origene.com/chromatograms/mg4162_c02.zip

Restriction Sites: SgfI-MluI

Cloning Scheme:



* The last codon before the Stop codon of the ORF

ACCN: NM_004760

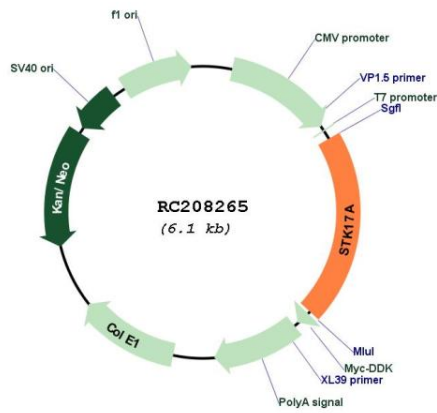
ORF Size: 1242 bp

OTI Disclaimer: Due to the inherent nature of this plasmid, standard methods to replicate additional amounts of DNA in E. coli are highly likely to result in mutations and/or rearrangements. Therefore, OriGene does not guarantee the capability to replicate this plasmid DNA. Additional amounts of DNA can be purchased from OriGene with batch-specific, full-sequence verification at a reduced cost. Please contact our customer care team at custsupport@origene.com or by calling 301.340.3188 option 3 for pricing and delivery.

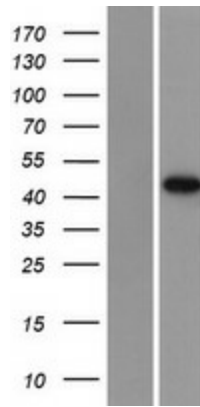
The molecular sequence of this clone aligns with the gene accession number as a point of reference only. However, individual transcript sequences of the same gene can differ through naturally occurring variations (e.g. polymorphisms), each with its own valid existence. This clone is substantially in agreement with the reference, but a complete review of all prevailing variants is recommended prior to use. [More info](#)

OTI Annotation:	This clone was engineered to express the complete ORF with an expression tag. Expression varies depending on the nature of the gene.
Components:	The ORF clone is ion-exchange column purified and shipped in a 2D barcoded Matrix tube containing 10ug of transfection-ready, dried plasmid DNA (reconstitute with 100 ul of water).
Reconstitution Method:	<ol style="list-style-type: none">1. Centrifuge at 5,000xg for 5min.2. Carefully open the tube and add 100ul of sterile water to dissolve the DNA.3. Close the tube and incubate for 10 minutes at room temperature.4. Briefly vortex the tube and then do a quick spin (less than 5000xg) to concentrate the liquid at the bottom.5. Store the suspended plasmid at -20°C. The DNA is stable for at least one year from date of shipping when stored at -20°C.
RefSeq:	<u>NM_004760.1</u> , <u>NP_004751.1</u>
RefSeq Size:	2641 bp
RefSeq ORF:	1245 bp
Locus ID:	9263
UniProt ID:	<u>Q9UEE5</u>
Cytogenetics:	7p13
Domains:	pkinase, TyrKc, S_TKc
Protein Families:	Druggable Genome, Protein Kinase
MW:	46.4 kDa
Gene Summary:	This gene is a member of the DAP kinase-related apoptosis-inducing protein kinase family and encodes an autophosphorylated nuclear protein with a protein kinase domain. The protein has apoptosis-inducing activity. [provided by RefSeq, Jul 2008]

Product images:



Circular map for RC208265



Western blot validation of overexpression lysate (Cat# [LY417773]) using anti-DDK antibody (Cat# [TA50011-100]). Left: Cell lysates from untransfected HEK293T cells; Right: Cell lysates from HEK293T cells transfected with RC208265 using transfection reagent MegaTran 2.0 (Cat# [TT210002]).