

Product datasheet for **RC208261**

ST3GAL3 (NM_006279) Human Tagged ORF Clone

Product data:

Product Type:	Expression Plasmids
Product Name:	ST3GAL3 (NM_006279) Human Tagged ORF Clone
Tag:	Myc-DDK
Symbol:	ST3GAL3
Synonyms:	DEE15; EIEE15; MRT12; SIAT6; ST3GALII; ST3Gal III; ST3GalIII; ST3N
Mammalian Cell Selection:	Neomycin
Vector:	pCMV6-Entry (PS100001)
E. coli Selection:	Kanamycin (25 ug/mL)
ORF Nucleotide Sequence:	>RC208261 ORF sequence Red=Cloning site Blue=ORF Green=Tags(s)

TTTTGTAATACGACTCACTATAGGGCGGCCGGAATTCGTCGACTGGATCCGGTACCGAGGAGATCTGCC
GCC**CGATCGCC**

ATGGGACTCTTGGTATTTGTGCGCAATCTGCTGCTAGCCCTCGCCTCTTCTGGTACTGGGATTTTGT
ATTATTCTGCGTGAAGCTACACTTACTCCAGTGGGAGGAGGACTCCAATTCAGTGGTCTTTCTTTGA
CTCCGCTGGACAAACACTAGGCTCAGAGTATGATCGGTTGGGCTTCCTCCTGAATCTGGACTCTAACTG
CCTGCTGAATTAGCCACCAAGTACGCAACTTTTCAGAGGGAGCTTGCAAGCCTGGCTATGCTTCAGCCT
TGATGACGGCCATCTTCCCCGGTCTCCAAGCCAGCACCCATGTTCTGGATGACTCCTTCGCAAGTG
GGCTAGAATCCGGGAGTTCGTGCCGCCCTTTGGGATCAAAGGTCAAGACAATCTGATCAAAGCCATCTTG
TCAGTACCAAAGAGTACCGCCTGACCCCTGCCTTGACAGCCTCCGCTGCCGCCGCTGCATCATCGTGG
GCAATGGAGGCGTTCTTGCCAACAAGTCTCTGGGGTACGAATTGACGACTATGACATTGTGGTGAGACT
GAATTCAGCACCAGTGAAGGCTTTGAGAAGGACGTGGGCGAGCAAACGACACTGCGCATCACCTACCCC
GAGGGCGCCATGCAGCGGCTGAGCAGTACGAGCGGATTCTCTCTTTGTCTCGCCGGCTTCAAGTGGC
AGGACTTTAAGTGGTTGAAATACATCGTCTACAAGGAGAGTGTGAGTGCATCGGATGGCTTCTGAAATC
TGTGGCCACTCGAGTGCCCAAGGAGCCCCCTGAGATTCGAATCCTCAACCCATATTTTCATCCAGGAGGCC
GCCTTACCCTCATTGGCCTGCCCTTCAACAATGGCCTCATGGCCGGGGGAACATCCCTACCCTTGGA
GTGTGGCAGTGACCATGGCACTACACGGCTGTGACGAGGTGGCAGTGCAGGATTTGGCTATGACATGAG
CACACCAACGCACCCCTGCACTACTATGAGACGTTTCGCATGGCAGCCATCAAAGAGTCTGGACGCAC
AATATCCAGCGAGAGAAAGATTTCTGCGGAAGCTGGTGAAGCTCGCGTCATCACTGATCTAAGCAGTG
GCATC

ACGCGTACGCGGCCGCTCGAGCAGAACTCATCTCAGAAGAGGATCTGGCAGCAAATGATATCCTGGATT
ACAAGGATGACGACGATAAGGTTTAA



[View online »](#)

Protein Sequence: >RC208261 protein sequence
Red=Cloning site Green=Tags(s)

MGLLVFVRNLLLALCLFLVLGFLYYSAWKLHLLQWEEDSNSVVL SFD SAGQTLGSEYDRLGFLNLDSKL
 PAELATKYANFSEGACKPGYASALMTAIFPRFSKPAPMFLDSSFRKWARIREFVPPFGIKGQDNL IKAIL
 SVTKEYRLTPALDSLRCRRCII VGNNGVLANKSLGSRIDDIYVRLNSAPVKGFVKDVGSKTTLRITYP
 EGAMQRPEQYERDSL FVL AGFKWQDFKWLKYIVYKERSASDGFWKS VATRVPKEPPEIRILNPFY IQEA
 AFTLIGL P FNGLMGRGNIPTLGSVAVTMALHGCD E VAVAGFGYDMSTPNAPLHYETVRMAAIKESWTH
 NIQREKEFLRKLVKARVITDLS SGI

TRTRPLEQKLISEEDLAANDILDYKDDDDKV

Chromatograms: https://cdn.origene.com/chromatograms/mk6090_g08.zip

Restriction Sites: SgfI-MluI

Cloning Scheme:



ACCN: NM_006279

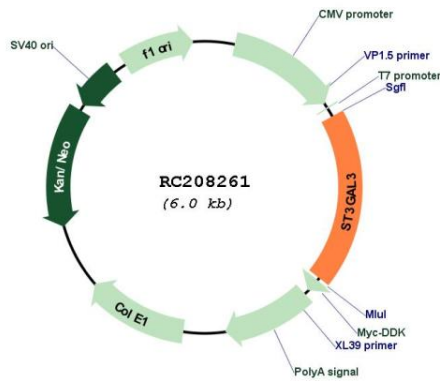
ORF Size: 1125 bp

OTI Disclaimer: Due to the inherent nature of this plasmid, standard methods to replicate additional amounts of DNA in *E. coli* are highly likely to result in mutations and/or rearrangements. Therefore, OriGene does not guarantee the capability to replicate this plasmid DNA. Additional amounts of DNA can be purchased from OriGene with batch-specific, full-sequence verification at a reduced cost. Please contact our customer care team at custsupport@origene.com or by calling 301.340.3188 option 3 for pricing and delivery.

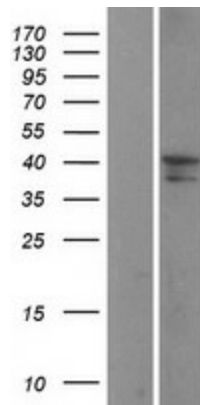
The molecular sequence of this clone aligns with the gene accession number as a point of reference only. However, individual transcript sequences of the same gene can differ through naturally occurring variations (e.g. polymorphisms), each with its own valid existence. This clone is substantially in agreement with the reference, but a complete review of all prevailing variants is recommended prior to use. [More info](#)

OTI Annotation:	This clone was engineered to express the complete ORF with an expression tag. Expression varies depending on the nature of the gene.
Components:	The ORF clone is ion-exchange column purified and shipped in a 2D barcoded Matrix tube containing 10ug of transfection-ready, dried plasmid DNA (reconstitute with 100 ul of water).
Reconstitution Method:	<ol style="list-style-type: none">1. Centrifuge at 5,000xg for 5min.2. Carefully open the tube and add 100ul of sterile water to dissolve the DNA.3. Close the tube and incubate for 10 minutes at room temperature.4. Briefly vortex the tube and then do a quick spin (less than 5000xg) to concentrate the liquid at the bottom.5. Store the suspended plasmid at -20°C. The DNA is stable for at least one year from date of shipping when stored at -20°C.
RefSeq:	NM_006279.5
RefSeq Size:	2294 bp
RefSeq ORF:	1128 bp
Locus ID:	6487
UniProt ID:	Q11203
Cytogenetics:	1p34.1
Domains:	Glyco_transf_29
Protein Families:	Secreted Protein, Transmembrane
Protein Pathways:	Glycosphingolipid biosynthesis - lacto and neolacto series, Keratan sulfate biosynthesis, Metabolic pathways
MW:	42.2 kDa
Gene Summary:	The protein encoded by this gene is a type II membrane protein that catalyzes the transfer of sialic acid from CMP-sialic acid to galactose-containing substrates. The encoded protein is normally found in the Golgi apparatus but can be proteolytically processed to a soluble form. This protein is a member of glycosyltransferase family 29. Mutations in this gene have been associated with a form of autosomal recessive nonsyndromic cognitive disability as well as infantile epileptic encephalopathy. Multiple transcript variants encoding several different isoforms have been found for this gene. [provided by RefSeq, Jul 2017]

Product images:



Circular map for RC208261



Western blot validation of overexpression lysate (Cat# [LY401890]) using anti-DDK antibody (Cat# [TA50011-100]). Left: Cell lysates from untransfected HEK293T cells; Right: Cell lysates from HEK293T cells transfected with RC208261 using transfection reagent MegaTran 2.0 (Cat# [TT210002]).