

Product datasheet for **RC208254**

RNF144 (RNF144A) (NM_014746) Human Tagged ORF Clone

Product data:

Product Type:	Expression Plasmids
Product Name:	RNF144 (RNF144A) (NM_014746) Human Tagged ORF Clone
Tag:	Myc-DDK
Symbol:	RNF144
Synonyms:	hUIP4; RNF144; UBCE7IP4
Mammalian Cell Selection:	Neomycin
Vector:	pCMV6-Entry (PS100001)
E. coli Selection:	Kanamycin (25 ug/mL)
ORF Nucleotide Sequence:	>RC208254 representing NM_014746 Red=Cloning site Blue=ORF Green=Tags(s)

TTTTGTAATACGACTCACTATAGGGCGCCGGGAATTCGTCGACTGGATCCGGTACCGAGGAGATCTGCC
GCC**CGATCGCC**

ATGACCACAGCAAGGTACCGGCCACCTGGGACCTGGCCCTCGACCCGCTGGTGTCTTGCAAGCTCTGTC
TTGGGGAGTACCCAGTGGAGCAGATGACAACCATAGCCCAGTGCCAATGCATCTTCTGTACTCTGTGCCT
GAAACAGTATGTTGAGCTCTTGATCAAAGAAGGATTAGAAACCGCAATTAGCTGCCAGATGCTGCCTGC
CCTAAACAGGGCCACCTACAGGAGAACGAGATTGAGTGCATGGTTGCAGCTGAAATTATGCAAAGATATA
AAAAGCTACAATTTGAAAGAGAGGTGCTGTTTGTCCCTGTCGGACTTGGTGCCCGGCGTCCACCTGCCA
AGCTGTGTGTCAGCTCCAGGACGTGGGGCTGCAGACCCCCAGCCAGTGCAGTGCAAAGCCTGCCGTATG
GAATTCTGCTCCACCTGCAAAGCCAGCTGGCACCCCTGGCCAGGGCTGCCCGGAGACCATGCCGATCACCT
TCCTCCCCGGGGAGACCAGTGTCTTTCAAATGGAAGAAGATGACGCGCCATCAAGCGCTGCCCCAA
GTGCAAAGTCTACATCGAGCGAGACGAAGGCTGCGCGCAGATGATGTGCAAGAAGTGAAGCAGCGCTTC
TGCTGGTACTGCCTGGAGTCTCTGGACGATGATTTCTTCTGATACTACGATAAGGGACCCTGCCGGA
ACAAGCTGGGCCACTCCCGGCATCTGTGATCTGGCATCGGACACAGGTTGTGGGCATTTTGCAGGATT
TGGGCTGCTGCTTTGGTGGCCACCTTTCCTACTCCTGGCCACTCCCTTTGTACTTTGCTGCAAGTGC
AAGTGCAGTAAAGGTGACGACGACCCGTTACCCACC

ACGCGTACGCGGCCGCTCGAGCAGAAACTCATCTCAGAAGAGGATCTGGCAGCAAATGATATCCTGGATT
ACAAGGATGACGACGATAAGGTTTAA



[View online »](#)

Protein Sequence: >RC208254 representing NM_014746
Red=Cloning site Green=Tags(s)

MTTARYRPTWDLALDPLVSKLCLGEYPVEQMTTIAQCQCIFCTLCLKQYVELLIKEGLETAISCPDAAC
 PKQGHLLQENEIECMVAEIMQRYKKLQFEREVLFDPCRTWCPASTCQAVCQLQDVGLQTPQPVQCKACRM
 EFCSTCKASWHPGQGCPEMPTITFLPGETSAAFKMEEDDAPIKRCPKCKVYIERDEGCAQMMCKNCKHAF
 CWYCLESLLDDDFLLIHDKGKPCRNLGHSRASVIWHRTQVVGIFAGFGLLLLVASPFLLLATPFVLCCKK
 KCSKGDDDDPLPT

TRTRPLEQKLISEEDLAANDILDYKDDDDKV

Chromatograms: https://cdn.origene.com/chromatograms/mg2875_e02.zip

Restriction Sites: SgfI-MluI

Cloning Scheme:



ACCN: NM_014746

ORF Size: 876 bp

OTI Disclaimer: The molecular sequence of this clone aligns with the gene accession number as a point of reference only. However, individual transcript sequences of the same gene can differ through naturally occurring variations (e.g. polymorphisms), each with its own valid existence. This clone is substantially in agreement with the reference, but a complete review of all prevailing variants is recommended prior to use. [More info](#)

OTI Annotation: This clone was engineered to express the complete ORF with an expression tag. Expression varies depending on the nature of the gene.

Components: The ORF clone is ion-exchange column purified and shipped in a 2D barcoded Matrix tube containing 10ug of transfection-ready, dried plasmid DNA (reconstitute with 100 ul of water).

Reconstitution Method:

1. Centrifuge at 5,000xg for 5min.
2. Carefully open the tube and add 100ul of sterile water to dissolve the DNA.
3. Close the tube and incubate for 10 minutes at room temperature.
4. Briefly vortex the tube and then do a quick spin (less than 5000xg) to concentrate the liquid at the bottom.
5. Store the suspended plasmid at -20°C. The DNA is stable for at least one year from date of shipping when stored at -20°C.

Note: Plasmids are not sterile. For experiments where strict sterility is required, filtration with 0.22um filter is required.

RefSeq: [NM_014746.1](#)

RefSeq Size: 5755 bp

RefSeq ORF: 879 bp

Locus ID: 9781

UniProt ID: [P50876](#)

Cytogenetics: 2p25.1

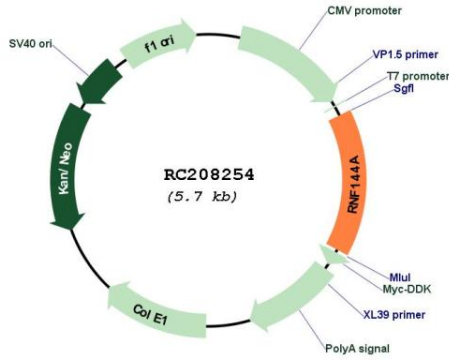
Domains: IBR

Protein Families: Druggable Genome, Transmembrane

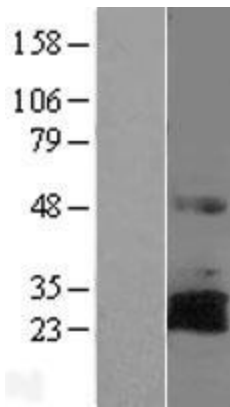
MW: 32.7 kDa

Gene Summary: This gene encodes a member of a family of RING finger domain-containing E3 ubiquitin ligases that also includes parkin and parc. The expression of this gene is induced by DNA damage. The encoded protein interacts with the cytoplasmic DNA-dependent protein kinase, catalytic subunit (DNA-PKcs) and promotes its degradation through ubiquitination. The orthologous mouse protein has been shown to interact with a ubiquitin-conjugating enzyme involved in embryonic development. [provided by RefSeq, Mar 2017]

Product images:



Circular map for RC208254



Western blot validation of overexpression lysate (Cat# [LY415064]) using anti-DDK antibody (Cat# [TA50011-100]). Left: Cell lysates from untransfected HEK293T cells; Right: Cell lysates from HEK293T cells transfected with RC208254 using transfection reagent MegaTran 2.0 (Cat# [TT210002]).