

## Product datasheet for **RC208253**

### **BIN2 (NM\_016293) Human Tagged ORF Clone**

#### **Product data:**

Product Type:	Expression Plasmids
Product Name:	BIN2 (NM_016293) Human Tagged ORF Clone
Tag:	Myc-DDK
Symbol:	BIN2
Synonyms:	BRAP-1
Mammalian Cell Selection:	Neomycin
Vector:	pCMV6-Entry (PS100001)
E. coli Selection:	Kanamycin (25 ug/mL)



[View online »](#)

**ORF Nucleotide Sequence:**

>RC208253 ORF sequence  
 Red=Cloning site Blue=ORF Green=Tags(s)

TTTTGTAATACGACTCACTATAGGGCGGCCGGGAATTCGTCGACTGGATCCGGTACCGAGGAGATCTGCC  
 GCC**CGCATCGCC**

ATGGCAGAGGGCAAGGCAGGCGGCGCGCCGGCCTCTTCGCCAAGCAGGTGCAGAAGAAGTTTAGCAGGG  
 CCCAGGAGAAGGTGCTGCAGAAATTGGGAAAGCTGTAGAAACCAAGATGAACGATTTGAACAAAGCGC  
 TAGCAACTTCTACCAACACAGGCAGAAGGCCACAAGCTGTACAAGGACCTGAAGAACTTCTTAGTGCA  
 GTCAAAGTGATGCATGAAAGTTCAAAAAGAGTGTAGAAACCTGCAGGAGATCTACAGCAGCGAGTGGG  
 ACGGTCATGAGGAGCTGAAGGCCATCGTATGGAATAATGATCTCCTTTGGGAAGACTACGAGGAGAACT  
 GGCTGACCAGGCTGAAGGACCATGAAATCTATGTTGCCAGTTCAGTGAATTAAGGAGAGAATTGCC  
 AAGCGGGTTCGGAACCTCGTGGACTATGACAGTGCACACACCTGGAGGCAGTGCAGAAATGCCAAGA  
 AGAAAGATGAGGCCAAGACTGCCAAGGCAGAGGAAGTTCACAAAGGCCAGACTGTGTTGAAGATCT  
 GAACCAAGAACTACTAGAGGAGCTGCCTATTCTTTATAATAGTCGTATTGGCTGCTATGTGACCATCTC  
 CAAAACATTTCCAACCTGAGGGATGTCTTCTACAGGAAATGAGCAAGCTGAACCAATCTCTACGAGG  
 TGATGAGCAAACCTGGAGAAGCAACATTCCAATAAAGTCTTTGTGGTGAAGGGACTGTCAAGCAGCAGCAG  
 GCGCTCTTTAGTCATTTCTCCCCAGTTCGAACAGCTACAGTCTCCAGTCTCTTACCTCACCTACTAGT  
 CCCTCTACACTTTCTTGAAGAGTGAGAGTGAATCTGTCTCAGCAACTGAAGATCTGGCACCTGATGCAG  
 CCCAAGGGGAAGACAATCTGAGATCAAGGAGCTCTTAGAAGAGGAGGAAATAGAGAAGGAAGGATCTGA  
 AGCAAGCTCCTCTGAGGAAGATGAGCCTCTACCAGCCTGCAATGGCCCGCCAGGCCAGCCCTCTCCT  
 ACCACTGAGAGGGCCAAGTCCCAGGAGGAAGTCTCCCCAGCTCCACAACCTCCATCACCAGGCGGAGCCC  
 TGAGCCCTTCAGGCGAGCCTTCATCATCTGCCACAGAAGTAGTCTCCGAACCCGACCCGAAGTGAAGG  
 ATCTGAACAACCAAGAAGAGAGGCTCTATCCAGAGGACCTCAGCACCCCTAGTAGGCCTCTCCACCC  
 AGAGCCACTGCAAGCCCAGGCCCTCTCAGGGAACATACCTTCCAGCCCTACAGCCTCTGGAGGGGTT  
 CACCCACCAGCCCTAGGGCTCTTGGGGACTGGGACTGCAAGTCTTAGGACCTCCCTAGAGGTCTCTCC  
 TAATCCAGAACCACCAGAGAAGCCAGTAAGAAGTCTGAGGCCAAAGAAAATGAAAACATCCACAATCAG  
 AACCTGAAGAAGTGTACTTCCCCACCTTAATGACATCTCAGGTTGCTTACAGCCTGGAGAGGCAA  
 AGAAGATGGAAGACAAGGAAAAGGATAATAAGCTTATCTCAGTCTGACTCCTCGGAGGGCCAAGACCAGT  
 TCAAGTCTCCATGGTACCAGAAAACAACCTCACAGCACCTGAACCTCAAGAAGAGGTATCCACAAGT  
 GAAAATCCACAACCTC

**ACGCGT**ACGCGGCGCCTCGAGCAGAAACTCATCTCAGAAGAGGATCTGGCAGCAAATGATATCCTGGATT  
 ACAAGGATGACGACGATAAGGTTTAA

**Protein Sequence:**

>RC208253 protein sequence  
 Red=Cloning site Green=Tags(s)

MAEGKAGGAAGLFAKQVQKKFSRAQEKVLQKLGKAVETKDERFEQSASNFYQQQAEGHKLKDLKNFLSA  
 VKVMHESKRVSLELQEIYSSEWDGHEELKAIWVNDLLWEDYEEKLADQAVRTMEIYVAQFSEIKERIA  
 KRGRKLVQYDSARHLEAVQNAKKKDEAKTAKAEFEFNKAQTVFEDLNQELLEELPILYNSRIGCYVTIF  
 QNISNLRDVFYREMSKLNHNLVEVMSKLEKQHSNKVVFVKGLSSSSRRSLVISPPVRTATVSSPLTSPTS  
 PSTLSLKSESESVSATEDLAPDAAQGEDNSEIKELLEEEIEKEGSEASSSEDEPLPACNGPAQAQPS  
 TTERAKSQEEVLPSSSTTPSPGGALSPSQPSSSATEVVLRTRTASEGSEQPKKRASIQRTSAPPSRPPPP  
 RATASPRPSSGNIPSSPTASGGGSPTSPRASLGTGTASPRTSLEVSPNPEPPEKPVRTPEAKENENIHNQ  
 NPEELCTSPMLTSQVASEPGEAKKMEDKEKDNKLI SADSSSEQDQLQVSMVPENNNLTAPEPQEEVSTS  
 ENPQL

**TR**TRPLEQKLISEEDLAANDILDYKDDDDKV

**Chromatograms:**

[https://cdn.origene.com/chromatograms/mk6350\\_g01.zip](https://cdn.origene.com/chromatograms/mk6350_g01.zip)

**Restriction Sites:**

Sgfl-Mlul

**Cloning Scheme:**


**ACCN:** NM\_016293

**ORF Size:** 1695 bp

**OTI Disclaimer:** The molecular sequence of this clone aligns with the gene accession number as a point of reference only. However, individual transcript sequences of the same gene can differ through naturally occurring variations (e.g. polymorphisms), each with its own valid existence. This clone is substantially in agreement with the reference, but a complete review of all prevailing variants is recommended prior to use. [More info](#)

**OTI Annotation:** This clone was engineered to express the complete ORF with an expression tag. Expression varies depending on the nature of the gene.

**Components:** The ORF clone is ion-exchange column purified and shipped in a 2D barcoded Matrix tube containing 10ug of transfection-ready, dried plasmid DNA (reconstitute with 100 ul of water).

**Reconstitution Method:**

1. Centrifuge at 5,000xg for 5min.
2. Carefully open the tube and add 100ul of sterile water to dissolve the DNA.
3. Close the tube and incubate for 10 minutes at room temperature.
4. Briefly vortex the tube and then do a quick spin (less than 5000xg) to concentrate the liquid at the bottom.
5. Store the suspended plasmid at -20°C. The DNA is stable for at least one year from date of shipping when stored at -20°C.

**RefSeq:** [NM\\_016293.4](#)

**RefSeq Size:** 2264 bp

**RefSeq ORF:** 1698 bp

**Locus ID:** 51411

**UniProt ID:** [Q9UBW5](#)

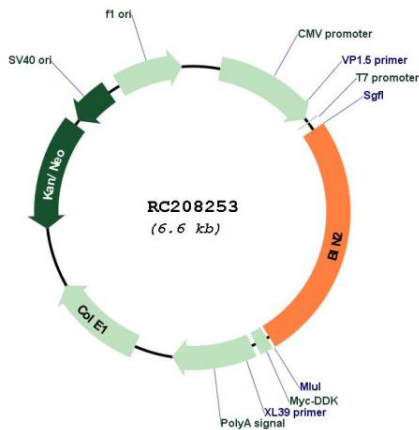
**Cytogenetics:** 12q13.13

**Domains:** BAR

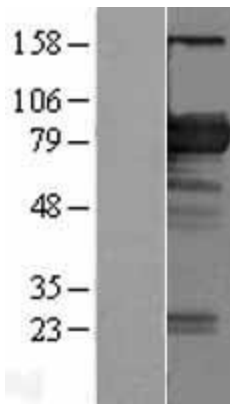
**MW:** 61.9 kDa

**Gene Summary:** Promotes cell motility and migration, probably via its interaction with the cell membrane and with podosome proteins that mediate interaction with the cytoskeleton. Modulates membrane curvature and mediates membrane tubulation. Plays a role in podosome formation. Inhibits phagocytosis.[UniProtKB/Swiss-Prot Function]

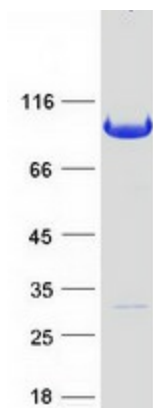
**Product images:**



Circular map for RC208253



Western blot validation of overexpression lysate (Cat# [LY414067]) using anti-DDK antibody (Cat# [TA50011-100]). Left: Cell lysates from untransfected HEK293T cells; Right: Cell lysates from HEK293T cells transfected with RC208253 using transfection reagent MegaTran 2.0 (Cat# [TT210002]).



Coomassie blue staining of purified BIN2 protein (Cat# [TP308253]). The protein was produced from HEK293T cells transfected with BIN2 cDNA clone (Cat# RC208253) using MegaTran 2.0 (Cat# [TT210002]).