

Product datasheet for **RC208252**

CECR1 (NM_017424) Human Tagged ORF Clone

Product data:

Product Type:	Expression Plasmids
Product Name:	CECR1 (NM_017424) Human Tagged ORF Clone
Tag:	Myc-DDK
Symbol:	CECR1
Synonyms:	ADA2; ADGF; IDGFL
Mammalian Cell Selection:	Neomycin
Vector:	pCMV6-Entry (PS100001)
E. coli Selection:	Kanamycin (25 ug/mL)



[View online »](#)

ORF Nucleotide Sequence:

>RC208252 ORF sequence
 Red=Cloning site Blue=ORF Green=Tags(s)

TTTTGTAATACGACTCACTATAGGGCGGCCGGAATTCGTCGACTGGATCCGGTACCGAGGAGATCTGCC
 GCC**CGGATCGCC**

ATGTTGGTGGATGGCCATCTGAGCGGCCAGCCCTGTGCTTCTTGCTGTTGGCTGTGGCAATGTCTTTCT
 TCGGCTCAGCTCTATCCATAGATGAAACACGGGCGCATCTGTTGTTGAAAGAAAAGATGATGCGGCTCGG
 GGGCGGCTGGTCTGAACACCAAGGAGGAGCTGGCCAATGAGAGGCTCATGACGCTCAAAAATCGCTGAG
 ATGAAGGAGGCCATGAGGACCCTGATATCCACCACGATGCACTTTTTCCAGGCCAAGCATCTCATTG
 AGAGAAGTCAAGTGTAAATATTCTAAGGATGATGCCAAAAGGGGCTGCCTTGACCTCCATGACATTGG
 CATCGTACTATGGACTGGTGGTGAAGATGTCACCTACAGGCCTCACTGCCACATCTGTTTACCCCA
 AGGGGATCATGCAGTTCAGATTTGCTCACCACTCCCGTCCATCAGAAAAATGTTCCAAGTGGATTC
 TGCTGGAGGATTATCGGAAGCGGTGCAGAACGCTCACTGAGTTTGTGACAGCTTGCTGAGGAATTCAC
 TCTGGTGACCCAGCACCCGGAGGTGATTTACACAAACCAAAATGTTGCTGGTCAAATTTGAAACCATC
 TTCTTACCATCTCTGGTCTCATCCATTACGCACCAAGTTCAGAGACTATGCTTCCGGAGCATGCAGG
 AGTTCTACGAGGACAACGTGCTCTACATGGAGATCAGAGCCAGGCTGCTGCCGGTGTATGAGCTCAGTGG
 AGAGCACCATGACGAAGAGTGGTCAAGTGAAGACTTACCAGGAAGTAGCTCAGAAGTTTGTGGAACTCAC
 CCTGAGTTTATTGGAATCAAAAATCATTTATTCCGATCACAGATCCAAAGATGTGGCTGTCATCGCAGAA
 CCATCCGAATGGCCATGGGGCTCCGAATCAAGTCCCCACGGTGGTGGCAGGGTTTGACCTGGTGGGGCA
 TGAGGACACTGGCCACTCCTTGCATGACTACAAGGAAGCTCTGATGATCCCCGCAAGGATGGCGTTAAG
 CTGCTTACTTCTTCCACGCCGGAGAAACAGACTGGCAGGGTACTTCCATAGACAGGAACATTCTGGATG
 CTCTGATGCTGAACACTACCAGAATCGCCATGGATTTGCTTTGAGCAAACACCCCGCAGTCAAGGATTA
 CTCTGGAAAAAGGACATCCCCATAGAAGTCTGTCCCATCTCTAACAGGTGCTGAAACTGGTGTCTGAC
 TTGAGGAACCACCTGTAGCCACTCTGATGGCCACTGGGACCCCATGGTGTGATCAGCTCTGATGACCCAG
 CTATGTTTGGTGCCTAAGGCTTGTCTACGATTCTATGAGGTCTTATGGGCATTGGGGGATGAAGGC
 TGACCTGAGGACCCTCAACAGCTGGCCATGAAGTCTATCAAGTACAGTACCCTGTTGGAGAGTGAGAAA
 AATACTTTCATGGAAATCTGGAAGAAGAGATGGGATAAGTTCATAGCAGATGTGGCTACAAAG

ACGCGTACGCGGCCGCTCGAGCAGAAACTCATCTCAGAAGAGGATCTGGCAGCAAATGATATCTGGATT
 ACAAGGATGACGACGATAAGGTTTAA

Protein Sequence:

>RC208252 protein sequence
 Red=Cloning site Green=Tags(s)

MLVDGSPERPALCFLLAVAMSFSGALSIDETRAHLLKKEKMMRLGGRLVLTNKEELANERLMTLKIAE
 MKEAMRTLIFPPSMHFFQAKHLIERSQVFNILRMMPKGAALHLHDIGIVTMDWLVRNVYRPHCHICFTP
 RGIMQFRFAHPTPRPSEKCSKWILLEDYRKRQNVTEFDDSLRNFTLVTQHPEVIYTNQNVVWSKFETI
 FFTISGLIHYAPVFRDYVFRSMQEFYEDNVLMEIRARLLPVYELSGEHHDEEWSVKTYQEVAQKFVETH
 PEFIGIKIISDHRKDVAVIAESIRMAMGLRIKFPVVAGFDLVGHEDTGHSLHDYKEALMIPAKDGVK
 LPYFFHAGETDWQGTSIDRNILDALMLNTRIGHGFALSKHPALRTYSWKKDIPIEVCPISNQVLKLVSD
 LRNHPVATLMTAGHPMVISDDPAMFGAKGLSYDFYEVFMGIGMKADLRTLKQLAMNSIKYSTLLESEK
 NTFMEIWKRWDFIADVATK

TRTRPLEQKLISEEDLAANDILDYKDDDDKV

Chromatograms:

https://cdn.origene.com/chromatograms/mk6350_f07.zip

Restriction Sites:

Sgfl-Mlul

Cloning Scheme:


ACCN: NM_017424

ORF Size: 1533 bp

OTI Disclaimer: The molecular sequence of this clone aligns with the gene accession number as a point of reference only. However, individual transcript sequences of the same gene can differ through naturally occurring variations (e.g. polymorphisms), each with its own valid existence. This clone is substantially in agreement with the reference, but a complete review of all prevailing variants is recommended prior to use. [More info](#)

OTI Annotation: This clone was engineered to express the complete ORF with an expression tag. Expression varies depending on the nature of the gene.

Components: The ORF clone is ion-exchange column purified and shipped in a 2D barcoded Matrix tube containing 10ug of transfection-ready, dried plasmid DNA (reconstitute with 100 ul of water).

Reconstitution Method:

1. Centrifuge at 5,000xg for 5min.
2. Carefully open the tube and add 100ul of sterile water to dissolve the DNA.
3. Close the tube and incubate for 10 minutes at room temperature.
4. Briefly vortex the tube and then do a quick spin (less than 5000xg) to concentrate the liquid at the bottom.
5. Store the suspended plasmid at -20°C. The DNA is stable for at least one year from date of shipping when stored at -20°C.

RefSeq: [NM_017424.2](#), [NP_059120.2](#)

RefSeq Size: 3947 bp

RefSeq ORF: 1535 bp

Locus ID: 51816

Cytogenetics: 22q11.1

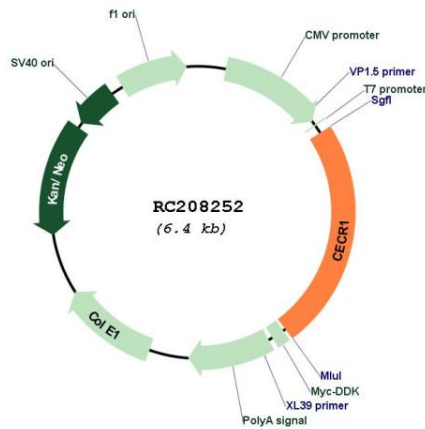
Domains: A_deaminase

Protein Families: Druggable Genome, Secreted Protein, Transmembrane

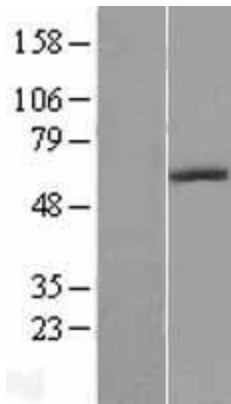
MW: 58.9 kDa

Gene Summary: This gene encodes a member of a subfamily of the adenosine deaminase protein family. The encoded protein is one of two adenosine deaminases found in humans, which regulate levels of the signaling molecule, adenosine. The encoded protein is secreted from monocytes undergoing differentiation and may regulate cell proliferation and differentiation. This gene may be responsible for some of the phenotypic features associated with cat eye syndrome. Alternative splicing results in multiple transcript variants. [provided by RefSeq, Aug 2013]

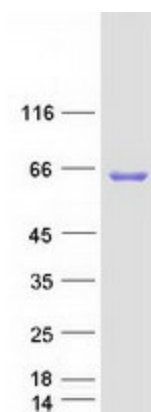
Product images:



Circular map for RC208252



Western blot validation of overexpression lysate (Cat# [LY413782]) using anti-DDK antibody (Cat# [TA50011-100]). Left: Cell lysates from untransfected HEK293T cells; Right: Cell lysates from HEK293T cells transfected with RC208252 using transfection reagent MegaTran 2.0 (Cat# [TT210002]).



Coomassie blue staining of purified CECR1 protein (Cat# [TP308252]). The protein was produced from HEK293T cells transfected with CECR1 cDNA clone (Cat# RC208252) using MegaTran 2.0 (Cat# [TT210002]).