

## Product datasheet for **RC208248**

### **MST1 (NM\_020998) Human Tagged ORF Clone**

#### **Product data:**

|                           |   |
|---------------------------|---|
| Product Type:             | Expression Plasmids                     |
| Product Name:             | MST1 (NM_020998) Human Tagged ORF Clone |
| Tag:                      | Myc-DDK                                 |
| Symbol:                   | MST1                                    |
| Synonyms:                 | D3F15S2; DNF15S2; HGFL; MSP; NF15S2     |
| Mammalian Cell Selection: | Neomycin                                |
| Vector:                   | pCMV6-Entry (PS100001)                  |
| E. coli Selection:        | Kanamycin (25 ug/mL)                    |



[View online »](#)

ORF Nucleotide  
Sequence:

>RC208248 representing NM\_020998  
Red=Cloning site Blue=ORF Green=Tags(s)

TTTTGTAATACGACTCACTATAGGGCGGCCGGGAATTCGTCGACTGGATCCGGTACCGAGGAGATCTGCC  
GCC**CGGATCGCC**

ATGGGGTGGCTCCACTCCTGCTGCTTCTGACTCAATGCTTAGGGGTCCCTGGGCAGCGCTCGCCATTGA  
ATGACTTCCAAGTGTCCGGGGCACAGAGCTACAGCACCTGCTACATGCGGTGGTGCCCGGCCCTTGGCA  
GGAGGATGTGGCAGATGCTGAAGAGTGTGCTGGTCGCTGTGGGCCCTAATGGACTGCCGGGCCCTCCAC  
TACAACGTGAGCAGCCATGTTGCCAACTGCTGCCATGGACTCAACACTCGCCCCACACGAGGCTGCGGC  
GTTCTGGGCGCTGTGACCTCTCCAGAAGAAAGACTACGTACGGACCTGCATCATGAACAATGGGGTTGG  
GTACCGGGGCACCATGGCCACGACCGTGGTGGCTGCCCTGCCAGGCTTGGAGCCACAAGTTCCCGAAT  
GATCACAAGTACACGCCACTCTCCGGAATGGCTGGAAGAGAATTCTGCCGTAACCCTGATGGCGACC  
CCGGAGGTCTTGGTGTACACAACAGACCCTGCTGTGCGCTTCCAGAGCTGCGGCATCAATCTCGCCG  
GGAGGCCGCGTGTCTGGTGAATGGCGAGGAATACCGCGGGCGCGGTAGACCGCACGGAGTCAGGGCGC  
GAGTGCCAGCGCTGGGATCTTACGACCCCGCACAGCACCCCTTCGAGCCGGGCAAGTTCCTCGACCAAG  
GTCTGGACGACAATATTGCCGGAATCCTGACGGCTCCGAGCGGCCATGGTGCTACACTACGGATCCGCA  
GATCGAGCGAGAGTTCTGTGACCTCCCCGCTGCGGGTCCGAGGCACAGCCCCGCAAGAGGCCACAAC  
GTCAGCTGCTTCCGCGGGAAGGGTGAGGGCTACCGGGGCACAGCCAATACCACCACTGCGGGCGTACCT  
GCCAGCGTTGGGACGCGCAATCCCTCATCAGCACCGATTTACGCCAGAAAAATACGCGTGCAAAGACCT  
TCGGGAGAACTTCTGCCGAACCCGACGGCTCAGAGGGCCCTGGTGTTCACACTGCGGCCCGGCATG  
CAGGGGACAGTACCGCGGCACGGTACGCAAGACCCGCAAGGGTGTCCAGTGCCAGCGCTGGTCCGCTGA  
GACGCCGACAAGCCGAGTTCACGTTTACCTCCGAACCGCATGCACAACCTGGAGGAGAACTTCTGCCGG  
AACCCAGATGGGGATAGCCATGGGCCCTGGTGCTACACGATGGACCCAAGGACCCATTGACTACTGTG  
CCCTGCGACGCTGCGCTGATGACCAGCCGCATCAATCCTGGACCCCCAGACCAGGTGCAGTTTGAGAA  
GTGTGGCAAGAGGGTGGATCGGCTGGATCAGCGCGTTCGAAGCTGCGCGTGGTTGGGGCCATCCGGGC  
AACTCACCTGGACAGTCAGCTTGCAGGATCGGCAGGGCCAGCATTCTGCGGGGGTCTCTAGTGAAGG  
AGCAGTGGATACTGACTGCCCGCAGTGCTTCTCCTGCCATATGCCTCTCACGGGCTATGAGGTATG  
GTTGGCACCCCTGTTCCAGAACCACAGCATGGAGAGCCAAGCCTACAGCGGGTCCAGTAGCCAAGATG  
GTGTGTGGGCCCTCAGGCTCCCAGCTTGTCTGCTCAAGCTGGAGAGATCTGTGACCCTGAACCAGCGTG  
TGGCCCTGATCTGCCTGCCCCCTGAATGGTATGTGGTGCCTCCAGGGACCAAGTGTGAGATTGCAGGCTG  
GGGTGAGACCAAAGGTACGGGTAAATGACACAGTCTAAATGTGGCCTTGCTGAATGTCATCTCTAACCA  
GAGTGTAAATCAAGCACCGAGGACGTGTGCGGGAGAGTGAGATGTGACTGAGGGACTGTTGGCCCTG  
TGGGGCCTGTGAGGGTACTACGGGGGCCACTTGCCTGCTTACCCACAACCTGCTGGGTCTGGAAGG  
AATTATAATCCCCAACCGAGTATGCGCAAGTCCCGCTGGCCAGCTGTCTTACGCGTGTCTCTGTGTTT  
GTGGACTGGATTCACAAGTCATGAGACTGGT

AG**CGGACCG**ACGCGTACGCGCCGCTCGAGCAGAACTCATCTCAGAAGAGGATCTGGCAGCAAATGATATCC  
TGGATTACAAGGATGACGACGATAAGGTTTAA

**Protein Sequence:** >RC208248 representing NM\_020998  
 Red=Cloning site Green=Tags(s)

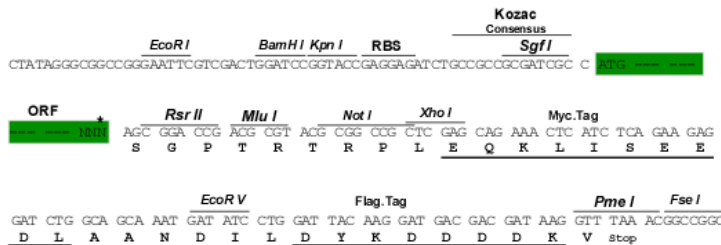
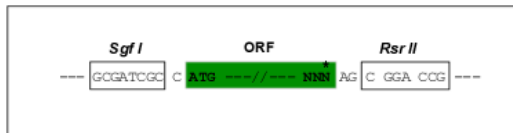
MGWLPLLLLLTQCLGVPQGRSPLNDFQVLRGTELQHLLHAVVPGPWQEDVADAEACAGRCGLMDCRAFH  
 YNVSSHGCQLLPWTQHSPHTRLRRSGRCDLFQKKDYVRTCIMNNGVGYRGTMTTVGGLPCQAWSHKFPN  
 DHKYPTLRLNGLEENFCRNPDGDPGGPWCYTTDPAVRFQSCGIKSCREAAACVWCNGEEYRGAVDRTEGR  
 ECQRWDLQHPHQHPFEPGKFLDQGLDDNYCRNPDGSRPWCYTTDPIEREFCDLPRCGSEAQPRQEATT  
 VSCFRGKGEGYRGTANTTTAGVPCQRWDAQIPHQHRFTPEKYACKDLRENFCRNPDGSEAPWCFTLRPGM  
 RAAFCYQIRRCTDDVRPQDCYHGAGEQYRGTVSKTRKGVQCQRWSAETPHKPQFTFTSEPHAQLEENFCR  
 NPDGDSHGPPWCYTMDPRTPFDYCALRRCADDQPPSILDPPDQVQFEKCGKRVDRLDQRRSKLRVVGHPG  
 NSPWTVSLRNRQGHFCGGLSVKEQWILTARQCFSSCHMPLTGYEVWLGTLFQNPQHGEPSLQRVPAKM  
 VCGPSGSQLVLLKLEERSVTLNQRVALICLPPWEYVVPVPGTKCEIAGWGETKGTGNDTVLNVALLNVISNQ  
 ECNIKHRGRVRESEMCTEGLLAPVGACEGDYGGPLACFTHNCWVLEGIIPNRVCARSRWPVAVFTRVSVF  
 VDWIHKVMRLG

SGPTRRRRLEQKLISEEDLAANDILDYKDDDDKV

**Restriction Sites:** SgfI-RsrII

**Cloning Scheme:**

Cloning sites used for ORF Shuttling:



\* The last codon before the Stop codon of the ORF

**ACCN:** NM\_020998

**ORF Size:** 2133 bp

**OTI Disclaimer:** The molecular sequence of this clone aligns with the gene accession number as a point of reference only. However, individual transcript sequences of the same gene can differ through naturally occurring variations (e.g. polymorphisms), each with its own valid existence. This clone is substantially in agreement with the reference, but a complete review of all prevailing variants is recommended prior to use. [More info](#)

**OTI Annotation:** This clone was engineered to express the complete ORF with an expression tag. Expression varies depending on the nature of the gene.

**Components:** The ORF clone is ion-exchange column purified and shipped in a 2D barcoded Matrix tube containing 10ug of transfection-ready, dried plasmid DNA (reconstitute with 100 ul of water).

**Reconstitution Method:**

1. Centrifuge at 5,000xg for 5min.
2. Carefully open the tube and add 100ul of sterile water to dissolve the DNA.
3. Close the tube and incubate for 10 minutes at room temperature.
4. Briefly vortex the tube and then do a quick spin (less than 5000xg) to concentrate the liquid at the bottom.
5. Store the suspended plasmid at -20°C. The DNA is stable for at least one year from date of shipping when stored at -20°C.

**RefSeq:** [NM\\_020998.2](#), [NP\\_066278.2](#)

**RefSeq Size:** 2280 bp

**RefSeq ORF:** 2178 bp

**Locus ID:** 4485

**UniProt ID:** [P26927](#)

**Cytogenetics:** 3p21.31

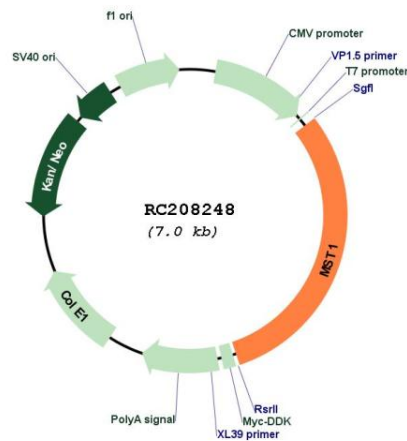
**Domains:** KR, Tryp\_SPc, PAN, PAN\_AP

**Protein Families:** Druggable Genome

**MW:** 80.1 kDa

**Gene Summary:** The protein encoded by this gene contains four kringle domains and a serine protease domain, similar to that found in hepatic growth factor. Despite the presence of the serine protease domain, the encoded protein may not have any proteolytic activity. The receptor for this protein is RON tyrosine kinase, which upon activation stimulates ciliary motility of ciliated epithelial lung cells. This protein is secreted and cleaved to form an alpha chain and a beta chain bridged by disulfide bonds. [provided by RefSeq, Jan 2010]

### Product images:



Circular map for RC208248