

Product datasheet for **RC208245**

MMP19 (NM_002429) Human Tagged ORF Clone

Product data:

Product Type:	Expression Plasmids
Product Name:	MMP19 (NM_002429) Human Tagged ORF Clone
Tag:	Myc-DDK
Symbol:	MMP19
Synonyms:	CODA; MMP18; RASI-1
Mammalian Cell Selection:	Neomycin
Vector:	pCMV6-Entry (PS100001)
E. coli Selection:	Kanamycin (25 ug/mL)



[View online »](#)

ORF Nucleotide Sequence:

>RC208245 ORF sequence
 Red=Cloning site Blue=ORF Green=Tags(s)

TTTTGTAATACGACTCACTATAGGGCGGCCGGAATTCGTCGACTGGATCCGGTACCGAGGAGATCTGCC
 GCC**CGCATCGCC**

ATGAAGTCCAGCAGCTGTGGCTGGGCTTCTACTCCCCATGACAGTCTCAGGCCGGTCTGGGGCTTG
 CAGAGGTGGCGCCGTGGACTACCTGTCACAATATGGGTACCTACAGAAGCCTCTAGAAGGATCTAATAA
 CTTCAAGCCAGAAGATATCACCGAGGCTCTGAGAGCTTTTCAGGAAGCATCTGAACCTCCAGTCTCAGGT
 CAGCTGGATGATGCCACAAGGGCCCGCATGAGGCAGCCTCGTTGTGGCCTAGAGGATCCCTTCAACCAGA
 AGACCCCTAAATACCTGTTGCTGGGCGCTGGAGAAAGAAGCACCTGACTTTCGCATCTTGAACCTGCC
 CTCACCCCTCCACCCACACAGCCCGGCAGCCCTGCGTCAAGCCTCCAGGACTGGAGCAATGTGGCT
 CCCTTGACCTTCAAGAGGTGCAGGCTGGTGGGCTGACATCCGCCTCTCCTTCCATGGCCGCCAAAGCT
 CGTACTGTTCCAATACTTTTGATGGGCTGGGAGAGTCTGGCCCATGCCGACATCCAGAGCTGGGCAG
 TGTGCACTTCGACGAAGACGAGTCTGGACTGAGGGGACCTACCGTGGGGTGAACCTGCGCATCATTGCA
 GCCCATGAAGTGGCCATGCTCTGGGGCTTGGGCACTCCCGATATCCAGGCCCTCATGGCCCCAGTCT
 ACGAGGGCTACCGGCCCACTTTAAGCTGCACCCAGATGATGTGGCAGGGATCCAGGCTCTCTATGGCAA
 GAAGAGTCCAGTGATAAGGGATGAGGAAGAAGAAGAGACAGAGCTGCCACTGTGCCCCAGTGCCACA
 GAACCCAGTCCCATGCCAGACCCCTGCAGTAGTGAAGTGGATGCCATGATGCTGGGGCCCGTGGGAAGA
 CCTATGCTTTCAAGGGGACTATGTGTGGACTGTATCAGATTGAGGACCGGGCCCTTGTCCGAGTGTC
 TGCCCTTTGGGAGGGCTCCCGGAAACCTGGATGCTGCTGTCTACTCGCCTCGAACACAATGGATTAC
 TTCTTTAAGGGAGACAAGGTGTGGCGCTACATTAATTTCAAGATGTCTCCTGGCTCCCCAAGAAGCTGA
 ATAGGGTAGAACCTAACCTGGATGCAGTCTCTATTGGCCTCTCAACAAAAGGTTCCTCTTTAAGGG
 CTCGGGTACTGGCAGTGGGACGAGCTAGCCCGAAGTACTTTCAGCAGTACCCCAACCAATCAAGGGT
 TTGTTTACGGAGTGCCAAACCGCCCTCGGCTGCTATGAGTTGGCAAGATGGCCGAGTCTACTTCTTCA
 AGGGCAAAGTCTACTGGCGCTCAACCAGCAGCTTCGAGTAGAGAAAGGCTATCCAGAAATATTTCCCA
 CAACTGGATGCACTGTCGTCGCCGACTATAGACACTACCCCATCAGGTGGGAATACCACTCCCTCAGGT
 ACGGGCATAACCTGGATACCACTCTCTCAGCCACAGAAACCACGTTTGAATAC

ACGCGTACGCGGCCGCTCGAGCAGAAACTCATCTCAGAAGAGGATCTGGCAGCAAATGATATCCTGGATT
 ACAAGGATGACGACGATAAGGTTTAA

Protein Sequence:

>RC208245 protein sequence
 Red=Cloning site Green=Tags(s)

MNCQQLWLGFLLPMTVSGRVLGLAEVAPVDYLSQYGYLQKPLEGSNNFKPEDITEALRAFQEASELPVSG
 QLDDATRARMRQPRCGLEDPFNQKTLKYLLLGRWRKKHLTFRILNLPSTLPPHTARAALRQAFQDWSNVA
 PLTFQEVQAGAADIRLSFHGRQSSYCSNTFDGPGRVLAHADIPELGSVHFDEDEFWTEGTYRGNLRIIA
 AHEVGHALGLGHSRYSQALMAPVYEGYRPHFKLHPDDVAGIQALYGKSPVIRDEEEEEETELPTVPPVPT
 EPSMPDPCSSELAMMLGPRGKTYAFKGDYVWTVSDSGPGLFRVSALWEGLPGNLDAAVYSPRTQWIH
 FFKGDKVWRYINFKMSPGFPKLNRVEPNLDAALYWPLNQKVFLFKGSGYWQWDELARTDFSSYPKPIKG
 LFTGVPNQPSAAMSWQDGRVYFFKGVYWRNLNQLRVEKGYPRNISHNWMHCRPRTIDTTPSGGNTTPSG
 TGITLDTLSATETTFEY

TRTRPLEQKLISEEDLAANDILDYKDDDDKV

Chromatograms:

https://cdn.origene.com/chromatograms/mk6532_b11.zip

Restriction Sites:

Sgfl-Mlul

Cloning Scheme:


ACCN: NM_002429

ORF Size: 1524 bp

OTI Disclaimer: The molecular sequence of this clone aligns with the gene accession number as a point of reference only. However, individual transcript sequences of the same gene can differ through naturally occurring variations (e.g. polymorphisms), each with its own valid existence. This clone is substantially in agreement with the reference, but a complete review of all prevailing variants is recommended prior to use. [More info](#)

OTI Annotation: This clone was engineered to express the complete ORF with an expression tag. Expression varies depending on the nature of the gene.

Components: The ORF clone is ion-exchange column purified and shipped in a 2D barcoded Matrix tube containing 10ug of transfection-ready, dried plasmid DNA (reconstitute with 100 ul of water).

Reconstitution Method:

1. Centrifuge at 5,000xg for 5min.
2. Carefully open the tube and add 100ul of sterile water to dissolve the DNA.
3. Close the tube and incubate for 10 minutes at room temperature.
4. Briefly vortex the tube and then do a quick spin (less than 5000xg) to concentrate the liquid at the bottom.
5. Store the suspended plasmid at -20°C. The DNA is stable for at least one year from date of shipping when stored at -20°C.

RefSeq: [NM_002429.5](#)

RefSeq Size: 3294 bp

RefSeq ORF: 1527 bp

Locus ID: 4327

UniProt ID: [Q99542](#)

Cytogenetics: 12q13.2

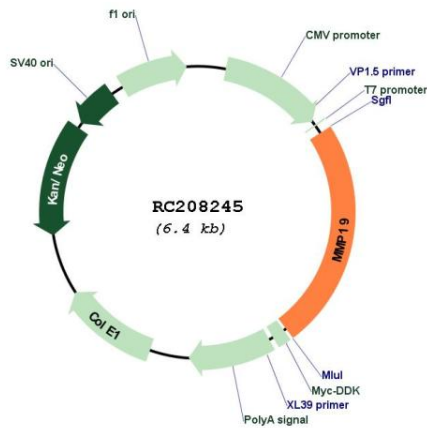
Domains: hemopexin, Peptidase_M10

Protein Families: Protease, Secreted Protein

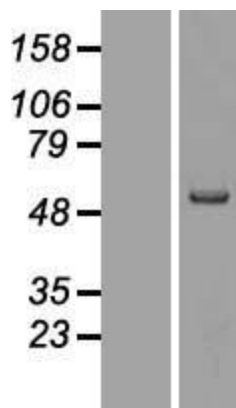
MW: 57.4 kDa

Gene Summary: This gene encodes a member of a family of proteins that are involved in the breakdown of extracellular matrix in normal physiological processes, such as embryonic development, reproduction, and tissue remodeling, as well as in disease processes, such as arthritis and metastasis. The encoded protein is secreted as an inactive proprotein, which is activated upon cleavage by extracellular proteases. Alternative splicing results in multiple transcript variants for this gene. [provided by RefSeq, Jan 2013]

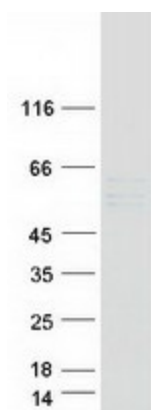
Product images:



Circular map for RC208245



Western blot validation of overexpression lysate (Cat# [LY419332]) using anti-DDK antibody (Cat# [TA50011-100]). Left: Cell lysates from untransfected HEK293T cells; Right: Cell lysates from HEK293T cells transfected with RC208245 using transfection reagent MegaTran 2.0 (Cat# [TT210002]).



Coomassie blue staining of purified MMP19 protein (Cat# [TP308245]). The protein was produced from HEK293T cells transfected with MMP19 cDNA clone (Cat# RC208245) using MegaTran 2.0 (Cat# [TT210002]).