

Product datasheet for **RC208235**

KIF18A (NM_031217) Human Tagged ORF Clone

Product data:

Product Type:	Expression Plasmids
Product Name:	KIF18A (NM_031217) Human Tagged ORF Clone
Tag:	Myc-DDK
Symbol:	KIF18A
Synonyms:	MS-KIF18A; PPP1R99
Mammalian Cell Selection:	Neomycin
Vector:	pCMV6-Entry (PS100001)
E. coli Selection:	Kanamycin (25 ug/mL)



[View online »](#)

**ORF Nucleotide
Sequence:**

>RC208235 ORF sequence
 Red=Cloning site Blue=ORF Green=Tags(s)

TTTTGTAATACGACTCACTATAGGGCGGCCGGGAATTCGTGACTGGATCCGGTACCGAGGAGATCTGCC
 GCC**CGCATCGCC**

ATGTCTGTCACTGAGGAAGACCTGTGCCACCATATGAAAGTAGTAGTTCGTGTACGTCCGAAAACTA
 AAGAAAAAGCAGCTGGATTTTCATAAAGTGGTTCATGTTGTGGATAAACATATCCTAGTTTTGATCCCAA
 ACAAGAAGAAGTCAAGTTTTTCCATGGAAGAAAACTACAAATCAAAATGTTATAAAGAAAAAAAATAAG
 GATCTTAAATTTGATTTGATGCTGTTTTGATGAAACGTCAACTCAGTCAGAAGTTTTGAAACACACTA
 CTAAGCCAATTTCTGATGTTTTGATGGAATAATTGCACAGTACTGCCTATGGTCCACTGGTGC
 TGGGAAGACCCACTATGCTAGGATCAGCTGATGAACCTGGAGTGATGATCTAACAATGTTACACCTT
 TACAAATGCATGGATGAGATTAAGAAGAGAAAAATGTAGTACTGCAGTTTCATATCTGGAGGTATATA
 ATGAACAGATTCGTGATCTCTTAGTAAATTCAGGGCCACTTGTGTCCGGGAAGATACCCAAAAAGGGT
 GGTCTGTCATGGACTTACTTTACACCAGCCAAATCCTCAGAAGAAATTTACATTTATTGGATAATGGA
 AACAAAAACAGGACACAACATCCCACTGATATGAATGCCACATCTTCTCGTTCTCATGCTTTTTCCAAA
 TTTACTTGCAGACAACAAGACAAAACAGCAAGTATCAATCAAAATGTCCGATTGCCAAGATGCACTCAT
 TGACCTGGCAGGATCTGAGCGAGCAAGTACTTCCGGTGCTAAGGGGACCCGATTTGTAGAAGGCACAAAT
 ATTAATAGATCACTTTTAGCTCTTGGGAATGTCATCAATGCCTTAGCAGATTCAAAGAGAAAAGATCAGC
 ATATCCCTTACAGAAATAGTAAGCTTACTCGCTTGTAAAGGATTCTCTTGGAGGAACTGTCAAATAT
 AATGATAGCTGCTGTTAGTCCTTCTGTATTCTACGATGACACATATAAACTCTTAAGTATGCTAAC
 CGGGCAAAGGACATTAATCTTCTTGAAGAGCAATGTTCTTAATGTCAATAATCATATAACTCAATATG
 TAAAGATCTGTAATGAGCAGAAGCAGAGATTTTATTGTTAAAAGAAAACTAAAAGCCTATGAAGAATG
 GAAAGCCTTCACTAATGAAAATGACCAAGCAAAGTTAATGATTTCAAACCTCAGGAAAAAGAAATCGAA
 AGGTTTTCAAGAAATCCTGAACTGCTTGTCCAGAATCGAGAAGAAATAGACAAGAAATATCTGAAGTTGG
 AAATGTTACTTAAAGAAATGAACTTAAATCATTCTACCAACAACAGTGCATAAAACAAATAGAAATGAT
 GTGTTCTGAAGACAAAGTAGAAAAGCCACTGGAAAACGAGATCATAGACTTGCATGTTGAAAACCTGT
 CGCTCCTACCTGGAGAAAAGGAGGGAGGGAATTGAAGCAATTTGATGAGAATACTAATTGGCTCCATC
 GTGTCGAAAAAGAAATGGGACTCTTAAGTCAAAACGGTCAATTTCAAAGGAACTCAAGAAAGATCTTCA
 TTGTCACCATTTGCACCTCCAGAACAAAGATTTGAAAGCACAATTAGACATATGATGGATCTAGCTTGT
 CTTGAGAACAGCAACACAGGCAGACTGAAGCAGTATTGATGCTTTACTTCAAACCTAAGAAAACAAT
 ATTGACATTAAGAAAGCCGGCCTGTCAAATGCTGCTTTTGAATCTGACTTCAAAGAGATCGAACATTT
 GGTAGAGAGGAAAAAGTGGTAGTTGGGCTGACCAAACTGCCGAACAACCAAGCAAAACGATCTACCA
 GGGATTTCTGTTCTTATGACCTTTCCACAACCTGGACCAGTTCAGCCTATTCTTGTGCTCATCTTCAG
 GTGGAATAACTGTTAAGATTCCTACAGAAAAAGAACTCGGAGAAAATAATGCCATCTCCCTTGAA
 AGGACAGCATACTCTAAAGTCTCCACCATCTCAAAGTGTGCAGCTCAATGATTCTCTTAGCAAAGAACTT
 CAGCCTATTGTATATACACCAGAAGACTGTAGAAAAGCTTTTCAAATCCGTCTACAGTAACCTTAATGA
 AACCATCATCTTACTACAAGTTTTCAGGCTGCAGCTCAAACATAAACAGTGATAATTGTCTGAAAAAT
 GTTGTGTAAGTAGCTATCCCTCATAATAGAAGAAAAGAAATGTGGACAGGAGGACTTGGACTCTACATTT
 ACTATATGTGAAGACATCAAGAGCTCGAAGTGTAAATTACCCGAACAAGAATCACTACCAATGATAACA
 AAGACATTTTACAACGGCTTATCCTTCTTCACTAAGCATTCTATGCCTGTACCAAGCATGGT
 GCCATCTACATGGCAATGACTACTGCTGCCAAAAGGAAACGAAAATTAACAAGTTCTACATCAAACAGT
 TCGTTAACTGCAGACGTAATTTGGATTTGCCAAACGTGTTGACAAAGATAATTCAAGTGAAGAAGCACT
 TACAAGAAAAACAACAATGGAACATAAAAGAAACATCTGTAAAATAAATCCAAGCATGGTTAGAAA
 ATTTGGAAGAAATTTTCAAAGGAAATCTAAGA

ACGCGTACGCGGCCGCTCGAGCAGAACTCATCTCAGAAGAGGATCTGGCAGCAATGATATCTGGATT
 ACAAGGATGACGACGATAAGGTTTAA

Protein Sequence: >RC208235 protein sequence
Red=Cloning site Green=Tags(s)

```
MSVTEEDLCHMKVVRVVRPENTKEKAAGFHKVVHVVDKHILVFDPKQEEVSFFHGKKTNQNVIKKQNK
DLKFVFDVAVFDETSQSEVFEHTTKPILRSFLNGYNCTVLAYGATGAGKTHTMLGSADEPGVMYL TMLHL
YKCMDEIKEEKICSTAVSYLEVYNEQIRDLLVNSGPLAVREDTQKGVVVHGLTLHQPKSSEIHLHLLDNG
NKNRTQHPTDMNATSSRSHAVFQIYLRQQDKTASINQNVRIAKMSLIDLAGSERASTSGAKGTRFVEGTN
INRSLLAGNVINALADSKRKNQHIPPYRNSKLTRLLKDSLGGNCQTIMIAAVSPSSVFYDDTYNTLKYAN
RAKDIKSSLKSNVLNVNNHITQYVKICNEQKAEILLKELKAYEEQKAFNENDQAKLMISNPQEKEIE
RFQEILNCLFQNRREEIRQEYLKLEMLLKENELKSFYQQQCHKQIEMMCSEDKVEKATGKRDRHLAMLKTR
RSYLEKRREEELKQFDENTNWLHRVEKEMGLLSQNGHIPKELKKDLHCHHLHLQNKDLKAQIRHMMDLAC
LQEQQHRQTEAVLNALLPTLRKQYCTLKEAGLSNAAFESDFKEIEHLVERKKVVVWADQTAEQPKQNDLP
GISVLMTFPQLGPVQPIPCSSSGGTNLVKIPTEKRTRRKLMPSPKQGQHTLKSPPSQSVQLNDSLKEL
QPIVYTPEDCRKAFQNPSTVTLMKPSSFTTSFQAVSSNINSDNCLKMLCEVAIPHNRREKCGQEDLDSTF
TICEDIKSSKCKLPEQESLPNDNKDILQRLDPSSFSTKHSMPVPSMVPSYAMATTAARKRKRLTSSTSNS
SLTADVNSGFAKRVQRDNSSEKHLQENKPTMEHKRNICKINPSMVRKFGRNISKGNLR
```

TRTRPLEQKLISEEDLAANDILDYKDDDDKV

Chromatograms: https://cdn.origene.com/chromatograms/mk6156_a02.zip

Restriction Sites: SgfI-MluI

Cloning Scheme:

Cloning sites used for ORF Shuttling:

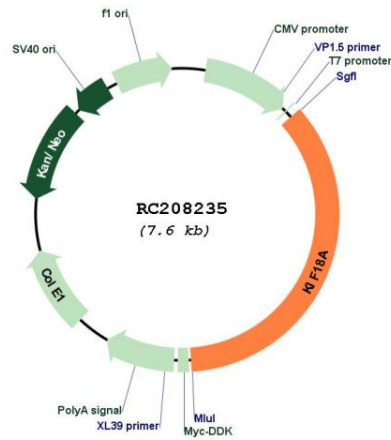


* The last codon before the Stop codon of the ORF

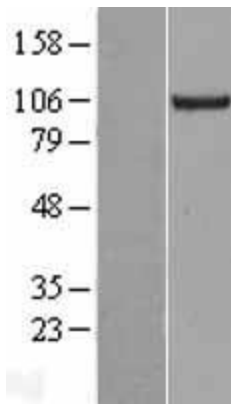
ACCN: NM_031217

ORF Size:	2694 bp
OTI Disclaimer:	The molecular sequence of this clone aligns with the gene accession number as a point of reference only. However, individual transcript sequences of the same gene can differ through naturally occurring variations (e.g. polymorphisms), each with its own valid existence. This clone is substantially in agreement with the reference, but a complete review of all prevailing variants is recommended prior to use. More info
OTI Annotation:	This clone was engineered to express the complete ORF with an expression tag. Expression varies depending on the nature of the gene.
Components:	The ORF clone is ion-exchange column purified and shipped in a 2D barcoded Matrix tube containing 10ug of transfection-ready, dried plasmid DNA (reconstitute with 100 ul of water).
Reconstitution Method:	<ol style="list-style-type: none">1. Centrifuge at 5,000xg for 5min.2. Carefully open the tube and add 100ul of sterile water to dissolve the DNA.3. Close the tube and incubate for 10 minutes at room temperature.4. Briefly vortex the tube and then do a quick spin (less than 5000xg) to concentrate the liquid at the bottom.5. Store the suspended plasmid at -20°C. The DNA is stable for at least one year from date of shipping when stored at -20°C.
RefSeq:	NM_031217.4
RefSeq Size:	3463 bp
RefSeq ORF:	2697 bp
Locus ID:	81930
UniProt ID:	Q8NI77
Cytogenetics:	11p14.1
Domains:	kinesin
Protein Families:	Druggable Genome
MW:	102.3 kDa
Gene Summary:	KIF18A is a member of the kinesin superfamily of microtubule-associated molecular motors (see MIM 148760) that use hydrolysis of ATP to produce force and movement along microtubules (Luboshits and Benayahu, 2005 [PubMed 15878648]).[supplied by OMIM, Aug 2008]

Product images:



Circular map for RC208235



Western blot validation of overexpression lysate (Cat# [LY403102]) using anti-DDK antibody (Cat# [TA50011-100]). Left: Cell lysates from untransfected HEK293T cells; Right: Cell lysates from HEK293T cells transfected with RC208235 using transfection reagent MegaTran 2.0 (Cat# [TT210002]).