

Product datasheet for RC208232

TMEM17 (NM_198276) Human Tagged ORF Clone

Product data:

Product Type: Expression Plasmids
 Product Name: TMEM17 (NM_198276) Human Tagged ORF Clone
 Tag: Myc-DDK
 Symbol: TMEM17
 Mammalian Cell Selection: Neomycin
 Vector: pCMV6-Entry (PS100001)
 E. coli Selection: Kanamycin (25 ug/mL)
 ORF Nucleotide Sequence: >RC208232 ORF sequence
 Red=Cloning site Blue=ORF Green=Tags(s)

TTTTGTAATACGACTCACTATAGGGCGGCCGGAATTCGTCGACTGGATCCGGTACCGAGGAGATCTGCC
 GCC**CGCATCGCC**

ATGGAGCTGCCAGATCCGGTGCGCCAGCGGCTGGGAACTTCAGCCGGGCCGTGTTCAAGTATTCCAATC
 GGACCAGTCCAGAGTCCAATGAGGGTCCGAAAATGAAATGGTCTCCAGTTTGGCACTGCAGATGCACT
 TTATTTAATACCTACTATTTCCCACTGTGGTGGGTGAGCAGCATTATGATGCTTACATGAAGTATTCA
 ATCTTGCTGACTACTACAAATTCATTGTGATCACTGTTATCATCCTAATAACCTTAATTGAAGCCATCC
 GGTTGTATCTGGCTACGTGGTAACCTACAGGAGAAGTTCCTGAGTTGGCTGGCTTTTGGCTTTTGGAG
 CCTTCTATTGCAGTTACCTTTAATTCTTTTCTTCTGCTTTAATGAAGGCCTAACAAATCTGCCCTTGAA
 AAAGCGATACATATCATCTTCACTCTCTTCTGCTTTTCAAGTTGTTGCAGCATTCTTACCTTAAGGA
 AAATGGTTAATCAGTTGGCAGTTCGTTTCCACCTCCAAGACTTTGACCGCTCTCTGCAAACAGAGGAGA
 CATGAGAAGGATGAGGTCATGTATAGAAGAGATC

ACGCGTACGCGGCCGCTCGAGCAGAACTCATCTCAGAAGAGGATCTGGCAGCAAATGATATCCTGGATT
 ACAAGGATGACGACGATAAGGTTTAA

Protein Sequence: >RC208232 protein sequence
 Red=Cloning site Green=Tags(s)

MELPDPVRQRLGNFSRAVFSNRTSPESNEGPENEMVSSLALQMSLYFNNTYYFPLWWVSSIMMLHMKYS
 ILPDYYKFIVITVILITLIEAIRLYLGYVGNLQEKVPELAGFWLLSLLQLPLILFLLFNEGLTNLPLE
 KAIHIIIFTLFLAFQVVAFLTLRKMVNQLAVRFHLQDFDRLSANRGMRRMRSCIEEI

TRTRPLEQKLISEEDLAANDILDYKDDDDKV

Chromatograms: https://cdn.origene.com/chromatograms/mk6352_f04.zip



[View online »](#)

Restriction Sites: SgfI-MluI

Cloning Scheme:



ACCN: NM_198276

ORF Size: 594 bp

OTI Disclaimer: The molecular sequence of this clone aligns with the gene accession number as a point of reference only. However, individual transcript sequences of the same gene can differ through naturally occurring variations (e.g. polymorphisms), each with its own valid existence. This clone is substantially in agreement with the reference, but a complete review of all prevailing variants is recommended prior to use. [More info](#)

OTI Annotation: This clone was engineered to express the complete ORF with an expression tag. Expression varies depending on the nature of the gene.

Components: The ORF clone is ion-exchange column purified and shipped in a 2D barcoded Matrix tube containing 10ug of transfection-ready, dried plasmid DNA (reconstitute with 100 ul of water).

- Reconstitution Method:**
1. Centrifuge at 5,000xg for 5min.
 2. Carefully open the tube and add 100ul of sterile water to dissolve the DNA.
 3. Close the tube and incubate for 10 minutes at room temperature.
 4. Briefly vortex the tube and then do a quick spin (less than 5000xg) to concentrate the liquid at the bottom.
 5. Store the suspended plasmid at -20°C. The DNA is stable for at least one year from date of shipping when stored at -20°C.

Note: Plasmids are not sterile. For experiments where strict sterility is required, filtration with 0.22um filter is required.

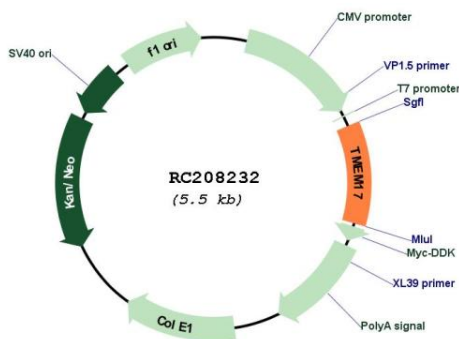
RefSeq: [NM_198276.1](#), [NP_938017.1](#)

RefSeq Size: 1925 bp

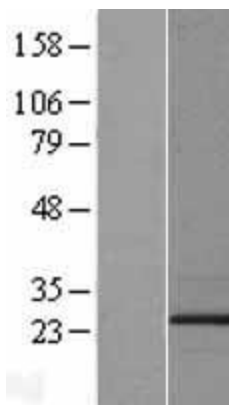
RefSeq ORF: 597 bp

Locus ID: 200728
UniProt ID: [Q86X19](#)
Cytogenetics: 2p15
Protein Families: Transmembrane
MW: 23.1 kDa
Gene Summary: Transmembrane component of the tectonic-like complex, a complex localized at the transition zone of primary cilia and acting as a barrier that prevents diffusion of transmembrane proteins between the cilia and plasma membranes. Required for ciliogenesis and sonic hedgehog/SHH signaling (By similarity).[UniProtKB/Swiss-Prot Function]

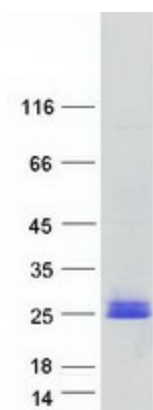
Product images:



Circular map for RC208232



Western blot validation of overexpression lysate (Cat# [LY405002]) using anti-DDK antibody (Cat# [TA50011-100]). Left: Cell lysates from untransfected HEK293T cells; Right: Cell lysates from HEK293T cells transfected with RC208232 using transfection reagent MegaTran 2.0 (Cat# [TT210002]).



Coomassie blue staining of purified TMEM17 protein (Cat# [TP308232]). The protein was produced from HEK293T cells transfected with TMEM17 cDNA clone (Cat# RC208232) using MegaTran 2.0 (Cat# [TT210002]).