

Product datasheet for RC208227

DHX29 (NM_019030) Human Tagged ORF Clone

Product data:

Product Type:	Expression Plasmids
Product Name:	DHX29 (NM_019030) Human Tagged ORF Clone
Tag:	Myc-DDK
Symbol:	DHX29
Synonyms:	DDX29
Mammalian Cell Selection:	Neomycin
Vector:	pCMV6-Entry (PS100001)
E. coli Selection:	Kanamycin (25 ug/mL)
ORF Nucleotide Sequence:	>RC208227 ORF sequence Red=Cloning site Blue=ORF Green=Tags(s)

TTTTGTAATACGACTCACTATAGGGCGGCCGGAATTCGTCGACTGGATCCGGTACCGAGGAGATCTGCC
GCC**CGATCGCC**

ATGGGCGGCAAGAACAAGAAACACAAGGCTCCAGCGGCCGCGGTGGTCCGGGCGCCGCTGTCTGCTTCCA
GAGCCAAATCTGCCGAGGCTGGAATTGCCGGGGAGGCCCAAAGCAAGAAGCCAGTGTCCAGGCCGGCCAC
CGCTGCCGCTGCCGCTGCCGGCTCCAGGGAGCCCCGTGTCAAGCAAGGTCCAAAAATTTATAGTTTTAAT
TCTACAAATGATTCTAGTGGTCTGCAATCTGGATAAATCTATTTTAAAAGTGGTAATTAATAACAAAC
TAGAGCAAAGAATTATTGGAGTGATCAATGAGCATAAAAAGCAAATAATGACAAAGGAATGATTTCTGG
AAGACTTACTGCCAAAAAATGCAAGATTATACATGGCTTTACAAGCATTTTCATTTAAGACAAAGGAC
ATTGAAGATGCCATGACCAATACACTCTTATATGGAGGTGACCTTCATTCTGCCTTGATTGGCTCTGTT
TAAACCTTTCAGATGATGCACTTCTGAAGGATTCAGTCAGGAATTTGAAGAGCAGCAACCTAAAAGTAG
GCCTAAATTTTCAGTCTCCTCAAAACAAGCCACTATTTACCTCCATTGCAACCTAAAACAAAAACATAT
GAAGAGGACCCTAAGAGTAAGCCAAAAAGGAAGAAAAAATATGGAAAGTAAATATGAAAGAGTGGATTT
TACGATATGCTGAACAACAAAAAAGAAGAAGAGAAGAAATGAGAATTTCTAAAAGTTTGAAGAGGAGGAAAA
ATTTGACCCTAATGAAAGGTACTTACATCTTGCAGCAAACTGCTGGATGCAAAAAGAACAAGCAGCTACC
TTTAAACTAGAAAAACAAGCAAGGCCAAAAAGAGGCTCAGGAAAAAATAGGAAATTTCAAAGAGAAA
TGGAAACTTTAGAAGACCATCCAGTATTTAACCCAGCCATGAAGATTTACATCAACAAAAATGAAAGGAA
AAAGCCTCCTGTAGCCACAGAAGGAGAAAGTGCATTGAATTTTAAATTTATTTGAAAAATCTGCAGTGCT
ACTGAAGAAGAGAAAGATAAAAAGAAAGAACCTCATGATGTAAGAAATTTTACTATACTGCTCGAAGTT
GGACTGGAAAACTCCCAACAATTTCTGATTGATTGGGTGAGGAAGAAATCTCCCAAGAGTCCAAATCC
TTCCTTTGAAAAAGTTCCAGTAGGTAGATACTGGAAATGTAGGGTTAGGGTAATCAAGTCTGAAGATGAT
GTCCTGGTAGTATGCCCTACAATCTTAACAGAAGATGGCATGCAAGCTCAGCACCTGGGAGCTACTTTAG
CCCTTTACCGTTTAGTTAAAGGGCAGTCAGTTCATCAGTACTTCTCCCACTTACCGAGATGTTTGGCT
GGAGTGGAGTGATGCAGAAAAGAAAAGGAAGAATTAATAAAAATGGAACCAATAAACCACGTGATCTT



TTTATTGCCAAACTTCTGAATAAACTGAAACAGCAGCAACAGCAGCAACAACAGCATTCTGAAAATAGA
GAGAAAACCTCTGAAGATCCCGAGGAATCTTGGGAAAATTTAGTTTCGGATGAGGATTTTTCTGCACTGTC
CTTGGAATCAGCAAAATGTGGAAGATTTGGAACCTGTTAGAAAACCTCTTTAGAAAAGTTGCAAAGCACACCT
AAGTATCAGAACTTCTAAAGGAAAAGACAACAGCTACCTGTATTTAAACATCGGGACTCAATTGTTGAAA
CTCTTAAAAGGCATCGGGTAGTGTTGTGGCAGGTGAAACAGGGAGTGGTAAAAGTACTCAGGTACCACA
TTTTCTATTGGAAGATTTGCTTCTAAATGAGTGGGAAGCAAGTAAATGTAACATTGTCTGTACCCAACAC
CGAAGAATCTCAGCAGTTAGTTTAGCCAACAGAGTATGTGATGAATTGGGCTGTGAAAATGGACCTGGAG
GAAGGAATTCCTTGTGTGGATATCAGATCCGGATGGAATCTCGAGCTTGTGAATCTACCAGGTTACTCTA
TTGTACAACAGGGTTTTGCTAAGGAACTTCAAGAAGATGGTCTTCTAAGTAATGTGTCTCATGTTATT
GTAGATGAGGTTTCATGAAAGAAGTGTCCAGTCAGACTTCTACTAATTATCTTGAAGGAAAATTTACAGA
AACGTTCTGATCTACACTTGATTCTAATGAGTGCCACTGTGGACAGCGAAAAATTTCTACATATTTAC
ACACTGCCCATTTCTCAGAATTTAGGAAGGAGTTATCCTGTTGAGGTTTTTTCATCTTGAAGATATAATA
GAAGAAACAGGCTTTGACTGAAAAAGACTCAGAATATTGTGAGAAATTTCTGGAAGAGGAAGAAGAAG
TAACCATTAATGTTACAAGCAAAGCAGGGGAATAAAAAATATCAGGAATACATCCAGTTCAGACTGG
AGCACATGCTGATTTAAATCCATTTTACAAAAGTACAGCAGCCGCACTCAGCATGCTATTCTATACATG
AATCCTCATAAAATCAACCTGGATCTATTTTGGAACTTCTTGCATACTTAGATAAAAAGTCCCAATTC
GAAATATTGAAGGAGCAGTATTGATCTTTTTACCAGGACTTGCTCATATTCAGCAGTTGTATGATCTTCT
ATCAAATGATAGAAGATTTTATTCTGAACGATATAAAGTGATAGCTCTGCATTCTATTCTTTCAACCCAA
GATCAAGCTGCAGCATTACACTTCCCCCTCCAGGAGTCAGGAAGATTGTTTTAGCAACCAATATTGCAG
AGACGGGTATCACTATTCCTGATGTTGTATTGTAATTGACTGGAAGAACAAAAGAAAATAAGTACCA
TGAAAGCAGTCAGATGAGTCTTTGGTGGAGACGTTTGTGAGTAAAGCCAGTGCTTTCAGCGCCAGGGA
AGAGCTGGGCGGGTCAGAGATGGCTTCTGTTTCCGAATGTACACAAGAGAAAGATTTGAAGGCTTTATGG
ATTATTCTGTTCTGAAATCTTACGTGTACCTTTGGAGGAATATGCCTTCATATTATGAAATGTAATCT
TGTTTCTCCTGAAGATTTCTCTCCAAAAGCCTTAGATCCTCCTCAGCTCCAAGTGATCAGCAATGCAATG
AATTTGCTCCGAAAAATGGAGCTTGTGAATTAATGAGCCTAAACTGACTCCGTTGGGCCAACACCTTG
CAGCTTTACCTGTGAATGTCAAGATTGGCAAGATGCTTATTTTTGGTGCCATATTTGGTGCCTTGACCC
AGTGGCAACACTAGCTGCAGTTATGACAGAGAAGTCTCCTTTTACCACACCAATTGGTCGAAAAGATGAA
GCAGATCTTGCAAAATCAGCTTTGGCCATGGCGGATTGAGCCACCTGACGATCTACAATGCATATCTAG
GATGGAAGAAAGCAGCACAAGAAGGAGTTATCGTTCTGAAATCACATACTGCCGGAGGAACTTTCTTAA
TAGAACATCACTGTTAACCTAGAGGATGTAAGCAGGAGTTAATAAAGTTGGTTAAGGCAGCAGGATTT
TCATCTTCCACAATTTCTACCAGCTGGGAAGGAAACAGAGCCTCACAGACCCTCTCATTCCAAGAAATTG
CCCTTCTTAAAGCTGACTGGTGGCTGGACTGTATGACAATGTGGGGAAGATAATCTATACAAAGTCAGT
GGATGTTACAGAAAAATGGCTTGCATTGTGGAGACGGCCAAAGGCAAAGCACAAGTACACCCATCTCTCA
GTAATCGAGATTTGCAAACTCATGGATGGCTCTTATACCAGGAGAAGATAAGGTATGCCAGAGTGTATT
TGAGAGAAACTACCCTAATAACCCCTTTTCCAGTTTTACTTTTTGGTGGTGATATAGAAGTTCAGCACCG
AGAACGCTTCTTTCTATTGATGGCTGGATCTATTTTTCAGGCCCTGTAAAGATAGCTGTCAATTTCAAG
CAGCTGAGAGTTCTCATTGATTCAGTTTTAAGAAAAAGCTTGAAAATCCAAAGATGTCCCTTAAAAATG
ACAAGATTCTGCAGATCATTACGGAATTGATAAAAAACAGAGAATAAC

ACGCGTACGCGGCCGCTCGAGCAGAACTCATCTCAGAAGAGGATCTGGCAGCAAATGATATCCTGGATT
ACAAGGATGACGACGATAAGGTTTAA

Protein Sequence: >RC208227 protein sequence
 Red=Cloning site Green=Tags(s)

```

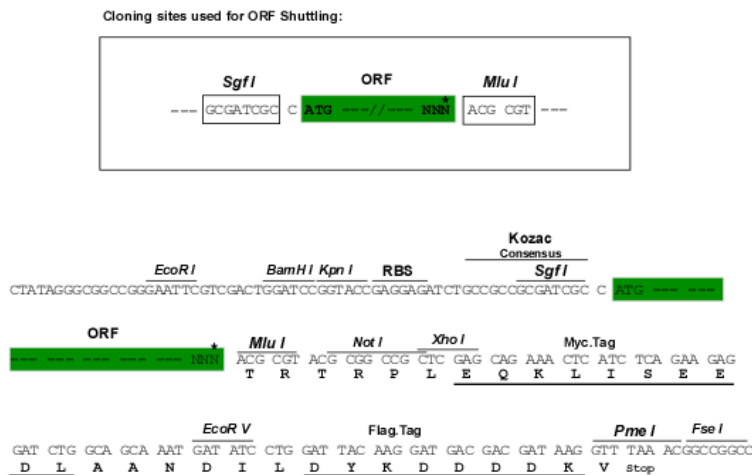
MGGKNNKHKAPAAAVVRAAVSASRAKSAEAGIAGEAQSCKPVS RPATAAAAAAGSREPRVKQGPKIYSFN
STNDSSGPANLDKSILKVVINNLEQRIIGVINEHKKQNNDKGMI SGRL TAKKLQDLYMALQAFSFKTKD
IEDAMTNTLLYGGDLHSALDWLCLNLSDDALPEGFSQEFEEQPKSRPKFQSPQIQATISPLLPKTKTY
EEDPKSKPKKEEKNMEVNMKEWILRYAEQQNEEEKNENSKSLEEEEFDPNERYLHLAAKLLDAKEQAAT
FKLEKNKQGQKEAQEKIRKFQREMETLEDHPVFNPA MKISHQQNERKKPPVATEGESALNFNLFEKSAAA
TEEEKDKKKEPHDVRNFDTARSWTGKSPKQFLIDWVRKNL PKSPNPSFEKVPVGRYWKCRVVRVISED
VLVVCPTILTEDGMQAQHLGATLALYRLVKGQSVHQLLPPTYRDVWLEWSDAEKKREELNKMETNKPRDL
FIAKLLNKLKQQQQQQQHSENKRENSDPEESWENLVSD EDFSALSLESANVEDLEPVRNLFKRLQSTP
KYQKLLKERQQLPVFKHRDSIVETLKRHRVVV VAGETGSGKSTQVPHFLLEDLLLNEWEASKNIVCTQH
RRI SAVSLANRVCEDELGCENGPGRNSLCGYQIR MESRACESTRLLYCTTGVLRLKQEDGLLSNVSHVI
VDEVHERSVQSDFLLIILKEILQKRSDLHLILMSATVDSEK FSTYFTHCPILRISGRSYPVEVFHLEDII
EETGFVLEK DSEY CQKFL EEEEEVTINVT SKAGGIK KYQEYIPVQTGAHADLNPFYQKYSSTQHAILYM
NPHKINLDLILELLAYLDKSPQFRNIEGAVLIFL PGLAHTQQLYDLLSNDRRFYSERYKVI ALHSILSTQ
DQAAAFTLPPPGRKIVLATNIAETGITIPDVVFVIDTGR TKENKYHESSQMSLVETFSKASALQRQG
RAGRVRDGF CFRMYTRERFEFGFMDYSVPEILRVPLEEL CLHIMKCNL GSPEDFLSKALDPPQLQVISNAM
NLLRKIGACELNEPKL TPLGQHLAALPVNVKIGKMLIFG AIFGCLDPVATLAAVMTEKSPFTTPIGRKDE
ADLAKSALAMADSDHLTIYNA YLGWKKARQEGGYRSEIT YCRRNFLNRTSLLTLEDVKQELIKLVKAAGF
SSSTTSTSWEGNRASQTL SFQEIALLKAVLVAGLYDNV GKI IYTKSVDVTEKLACIVETAQGKAQVHPSS
VNRDLQTHGWLLYQEKIRYARVYLRETTLITPPFVLL FGGDIEVQHRERLLSIDGWIYFQAPVKIAVIFK
QLRVLIDSVLRKKLENPKMSLENDKILQIITELIKTENN
    
```

TRTRPLEQKLISEEDLAANDILDYKDDDDKV

Chromatograms: https://cdn.origene.com/chromatograms/mk6713_g03.zip

Restriction Sites: SgfI-MluI

Cloning Scheme:



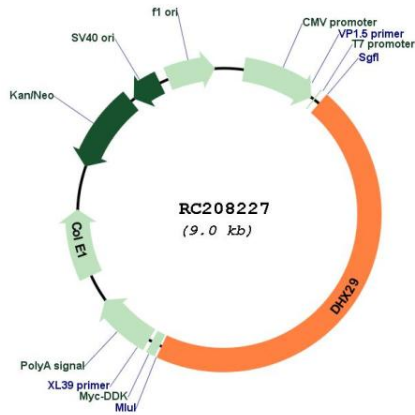
* The last codon before the Stop codon of the ORF

ACCN: NM_019030

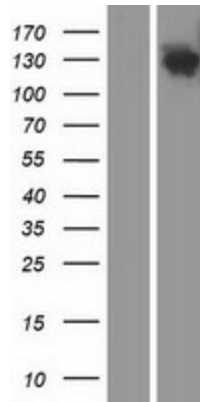
ORF Size: 4107 bp

OTI Disclaimer:	The molecular sequence of this clone aligns with the gene accession number as a point of reference only. However, individual transcript sequences of the same gene can differ through naturally occurring variations (e.g. polymorphisms), each with its own valid existence. This clone is substantially in agreement with the reference, but a complete review of all prevailing variants is recommended prior to use. More info
OTI Annotation:	This clone was engineered to express the complete ORF with an expression tag. Expression varies depending on the nature of the gene.
Components:	The ORF clone is ion-exchange column purified and shipped in a 2D barcoded Matrix tube containing 10ug of transfection-ready, dried plasmid DNA (reconstitute with 100 ul of water).
Reconstitution Method:	<ol style="list-style-type: none">1. Centrifuge at 5,000xg for 5min.2. Carefully open the tube and add 100ul of sterile water to dissolve the DNA.3. Close the tube and incubate for 10 minutes at room temperature.4. Briefly vortex the tube and then do a quick spin (less than 5000xg) to concentrate the liquid at the bottom.5. Store the suspended plasmid at -20°C. The DNA is stable for at least one year from date of shipping when stored at -20°C.
Note:	Plasmids are not sterile. For experiments where strict sterility is required, filtration with 0.22um filter is required.
RefSeq:	NM_019030.4
RefSeq Size:	4491 bp
RefSeq ORF:	4110 bp
Locus ID:	54505
UniProt ID:	Q7Z478
Cytogenetics:	5q11.2
MW:	155.3 kDa
Gene Summary:	This gene encodes a member of the DEAH (Asp-Glu-Ala-His) subfamily of proteins, part of the DEAD (Asp-Glu-Ala-Asp) box family of RNA helicases. The encoded protein functions in translation initiation, and is specifically required for ribosomal scanning across stable mRNA secondary structures during initiation codon selection. This protein may also play a role in sensing virally derived cytosolic nucleic acids. Knockdown of this gene results in reduced protein translation and impaired proliferation of cancer cells. [provided by RefSeq, Sep 2016]

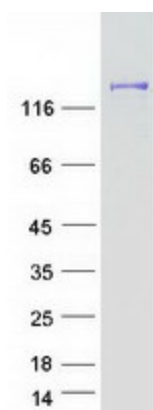
Product images:



Circular map for RC208227



Western blot validation of overexpression lysate (Cat# [LY412800]) using anti-DDK antibody (Cat# [TA50011-100]). Left: Cell lysates from untransfected HEK293T cells; Right: Cell lysates from HEK293T cells transfected with RC208227 using transfection reagent MegaTran 2.0 (Cat# [TT210002]).



Coomassie blue staining of purified DHX29 protein (Cat# [TP308227]). The protein was produced from HEK293T cells transfected with DHX29 cDNA clone (Cat# RC208227) using MegaTran 2.0 (Cat# [TT210002]).