

Product datasheet for **RC208224**

RANBP3L (NM_145000) Human Tagged ORF Clone

Product data:

| | |
|---------------------------|--|
| Product Type: | Expression Plasmids |
| Product Name: | RANBP3L (NM_145000) Human Tagged ORF Clone |
| Tag: | Myc-DDK |
| Symbol: | RANBP3L |
| Mammalian Cell Selection: | Neomycin |
| Vector: | pCMV6-Entry (PS100001) |
| E. coli Selection: | Kanamycin (25 ug/mL) |



[View online »](#)

ORF Nucleotide Sequence:

>RC208224 ORF sequence
 Red=Cloning site Blue=ORF Green=Tags(s)

TTTTGTAATACGACTCACTATAGGGCGGCCGGGAATTCGTCGACTGGATCCGGTACCGAGGAGATCTGCC
 GCCGCGATCGCC

ATGACTACCATACCAAGAAAAGGCAGCAGCCACCTGCCTGGCAGTTTGCACACCTGTAACTGAAGCTGC
 AGGAGGACCGGCGACAGCAAGAAAAATCTGTCTTGTCTCAACCCATATTTGTTTTGAAAAGGGAGAACA
 AACTTTTAAGAGACCTGCAGAAGACACCCTGTATGAAGCAGCAGAACCAGAATGTAAATGGTTTTCCAAGA
 AAGCGTGTACGGTCTTCATCTTTTACTTTTCATATTACAGATTCTCAGTCCCAGGGAGTGAGGAAAAACA
 ATGTTTTTATGACATCAGCTCTTGTGCAAAGTAGTGTGATATAAAGAGTGCTGAACAAGGTCCTGTGAA
 ACATTCTAAACATGTTATTAGACCTGCTATTTGCAGCTACCTCAAGCTCGAAGTTGTGCAAAAGTAAAGA
 AAAACATTTGGACACAAGGCACTGGAATCTTGCAAGACTAAAGAAAAACAATAAAGATTTCTGAGG
 GAAATTCCTATTTGTTAAGTGAAAATTTATCAAGGGCTAGAATTTCAAGTCCAGCTGTCTACTAACCAGGA
 CTTTTTAGGTGCAACATCAGTAGGATGTCAACCAATGAAGATAAATGTTCTTTTAAAAGCTGCAGTTCC
 AATTTTGTTTTGGAGAAAACATGGTAGAAAGAGTTTTGGGTACTCAAAAACACCCAGCTCAACTTG
 AAAATGATTCATATGCCAAGGAAAAACATTCAAATCCATTCCGAAATTTCTGTCAACTTTTTAAGTTC
 AAGAACAGACTCTATAAAAATACTTCCCTAATTGAATCAGCTGCTGCATTCTCTTCCCAACCATCACGA
 AAATGCTTGCTGGAGAAAATTGATGTTATAACAGGGGAGGAAACAGAACAATATGTGTTAAAGATAAACT
 GCAAGCTTTTCATATTCACAAAACAACAATCCTGGATTGAAAGGGGAGGAAACAGAACTAATGTGTTAAAGATAAACT
 TGACACAGCAAGCACTGACTGTGGAACATTACAGTCAAGACTAATTATGCGCAATCAAGGCACTAAGG
 CTGATCCTCAACAGCAAACTCTGGGCCAAATGAAGATTCAAAGAGCAAAACCACAAAAATGTACGAATAA
 CAGCTACTGATTTAGAAGACTATAGCATCAAAATATTTTAAATTCAGGCCAGTGCCCAAGATACAGCATA
 TTTGTATGCAGCAATACATCATCGTCTTGTGCACTTCAAAGCTTCAATAAGCAGAGAGATGTCAATCAA
 GCTGAAAGCCTGTGAGAAACAGCCCAACAATTGAACTGCGAAAGCTGTGATGAGAATGAGGATGATTTCA
 TCCAAGTCACTAAAAATGGATCAGATCCTTCTAGTTGGACTCACAGACAGTCGGTTGCCTGTTCA

ACGCGTACGCGGCCGCTCGAGCAGAACTCATCTCAGAAGAGGATCTGGCAGCAATGATATCCTGGATT
 ACAAGGATGACGACGATAAGGTTTAA

Protein Sequence:

>RC208224 protein sequence
 Red=Cloning site Green=Tags(s)

MTTIPRKSSHLPGSLHTCKLKLQEDRRQEQESVIAQPIFVFEKGEQTFKRPEDTLYEAAEPECNGFPR
 KRVRSSSFTFHITDSQSQGVKNNVFMVSALVQSSVDIKSAEQGPVKHSHKHIRPAILQLPQARSCAKVR
 KTFGHKALESCCKEKTNNKISEGNSYLLSENL SRARISVQLSTNQDFLGATSVGCQPNEDKCSFKSCSS
 NFVFGENMVERVLGTQKLTQPQLEND SYAKEKPFKSIPKFPVNFLSSRTDSIKNTSLIESAAAFSSQPSR
 KCLLEKIDVITGEETEHNVLKINCKLFI FNKTTQSWIERGRGTLRLNDTASTDCGTLQSRIMRNQGLR
 LILNSKLWAQMKIQRANHKNVRIATDLEDYSIKIFLIQASAQDTAYLYAAIHHRLVALQSFNKQRDVNQ
 AESLSETAQQLNCESCDENEDDFIQVTKNGSDPSSWTHRQSVACS

TRTRPLEQKLISEEDLAANDILDYKDDDDKV

Chromatograms:

https://cdn.origene.com/chromatograms/mk6341_d05.zip

Restriction Sites:

Sgfl-Mlul

Cloning Scheme:

Cloning sites used for ORF Shutting:



* The last codon before the Stop codon of the ORF

ACCN: NM_145000

ORF Size: 1395 bp

OTI Disclaimer: The molecular sequence of this clone aligns with the gene accession number as a point of reference only. However, individual transcript sequences of the same gene can differ through naturally occurring variations (e.g. polymorphisms), each with its own valid existence. This clone is substantially in agreement with the reference, but a complete review of all prevailing variants is recommended prior to use. [More info](#)

OTI Annotation: This clone was engineered to express the complete ORF with an expression tag. Expression varies depending on the nature of the gene.

Components: The ORF clone is ion-exchange column purified and shipped in a 2D barcoded Matrix tube containing 10ug of transfection-ready, dried plasmid DNA (reconstitute with 100 ul of water).

Reconstitution Method:

1. Centrifuge at 5,000xg for 5min.
2. Carefully open the tube and add 100ul of sterile water to dissolve the DNA.
3. Close the tube and incubate for 10 minutes at room temperature.
4. Briefly vortex the tube and then do a quick spin (less than 5000xg) to concentrate the liquid at the bottom.
5. Store the suspended plasmid at -20°C. The DNA is stable for at least one year from date of shipping when stored at -20°C.

Note: Plasmids are not sterile. For experiments where strict sterility is required, filtration with 0.22um filter is required.

RefSeq: [NM_145000.2](#), [NP_659437.2](#)
RefSeq Size: 2560 bp

RefSeq ORF: 1398 bp

Locus ID: 202151

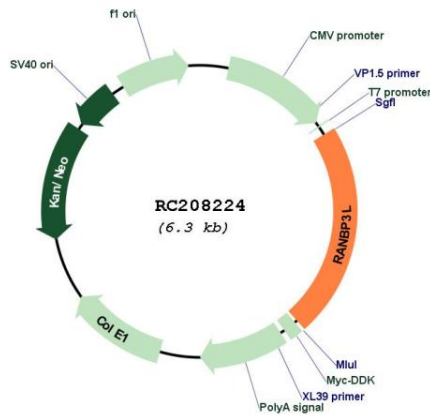
UniProt ID: [Q86VV4](#)

Cytogenetics: 5p13.2

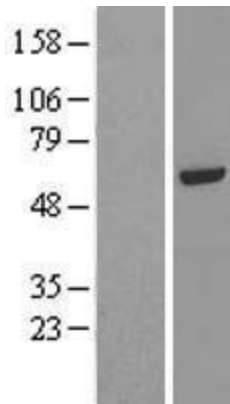
MW: 52.3 kDa

Gene Summary: Nuclear export factor for BMP-specific SMAD1/5/8 that plays a critical role in terminating BMP signaling and regulating mesenchymal stem cell differentiation by blocking osteoblast differentiation to promote myogenic differentiation. Directly recognizes dephosphorylated SMAD1/5/8 and mediates their nuclear export in a Ran-dependent manner.[UniProtKB/Swiss-Prot Function]

Product images:



Circular map for RC208224



Western blot validation of overexpression lysate (Cat# [LY408138]) using anti-DDK antibody (Cat# [TA50011-100]). Left: Cell lysates from untransfected HEK293T cells; Right: Cell lysates from HEK293T cells transfected with RC208224 using transfection reagent MegaTran 2.0 (Cat# [TT210002]).