

Product datasheet for RC208223

LYRM7 (NM_181705) Human Tagged ORF Clone

Product data:

Product Type: Expression Plasmids
Product Name: LYRM7 (NM_181705) Human Tagged ORF Clone
Tag: Myc-DDK
Symbol: LYRM7
Synonyms: C5orf31; MC3DN8; MZM1L
Vector: pCMV6-Entry (PS100001)
E. coli Selection: Kanamycin (25 ug/mL)
Cell Selection: Neomycin
ORF Nucleotide Sequence: >RC208223 ORF sequence
Red=Cloning site Blue=ORF Green=Tags(s)

TTTTGTAATACGACTCACTATAGGGCGGCCGGAATTCGTCGACTGGATCCGGTACCGAGGAGATCTGCC
GCC**CGATCGCC**

ATGGGACGGGCAGTCAAGTTTTACAGCTCTTTAAACACTGCACAGGACCAGACAACAAGTTTTTAAAA
ATGATGCCAGAGCATTAGAAGCAGCCAGAATAAAGATAAATGAAGAATTCAAAAATAATAAAGTGAAC
TTCTTCTAAGAAAATAGAAGAGCTAATGAAAATAGGTTCTGATATTGAATTACTCAGAACATCTGTT
ATACAAGTATTACACAGACCACAATACACTGAAACTGGTCCCTAGGAAAGACCTTCTGTAGAAAATG
TGCCATATTGTGATGCACCAACTCAGAAGCAA

ACGCGTACGCGGCCGCTCGAGCAGAACTCATCTCAGAAGAGGATCTGGCAGCAAATGATATCCTGGATT
ACAAGGATGACGACGATAAGGTTTAA

Protein Sequence: >RC208223 protein sequence
Red=Cloning site Green=Tags(s)

MGRAVKVLQLFKTLHRTRQQVFKNDARALEAARIKINEEFKNNKSETSSKKIEELMKIGSDIELLLRTSV
IQGIHTDHNTLKLVPKDLLVENVPYCDAPTQKQ

TRTRPLEQKLISEEDLAANDILDYKDDDDKV

Chromatograms: https://cdn.origene.com/chromatograms/mk6770_b01.zip

Restriction Sites: Sgfl-MluI

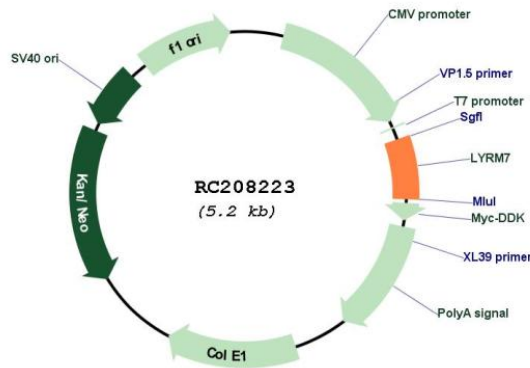


[View online »](#)

Cloning Scheme:



Plasmid Map:



ACCN: NM_181705

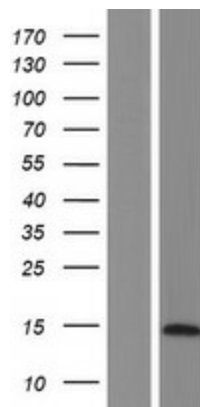
ORF Size: 312 bp

OTI Disclaimer: The molecular sequence of this clone aligns with the gene accession number as a point of reference only. However, individual transcript sequences of the same gene can differ through naturally occurring variations (e.g. polymorphisms), each with its own valid existence. This clone is substantially in agreement with the reference, but a complete review of all prevailing variants is recommended prior to use. [More info](#)

OTI Annotation:	This clone was engineered to express the complete ORF with an expression tag. Expression varies depending on the nature of the gene.
RefSeq:	NM_181705.1 , NP_859056.1
RefSeq Size:	6247 bp
RefSeq ORF:	315 bp
Locus ID:	90624
MW:	12 kDa

Gene Summary: Inner mitochondrial membrane complex III (CIII) is the main enzyme complex in the mitochondrial respiratory chain, and Rieske Fe-S protein (UQCRFS1) is the last catalytic subunit added to the complex. The protein encoded by this gene is a nuclear-encoded mitochondrial matrix protein that stabilizes UQCRFS1 and chaperones it to the CIII complex. Defects in this gene are a cause of mitochondrial complex III deficiency, nuclear type 8. Three transcript variants encoding two different isoforms have been found for this gene. [provided by RefSeq, Jun 2014]

Product images:



Western blot validation of overexpression lysate (Cat# [LY405652]) using anti-DDK antibody (Cat# [TA50011-100]). Left: Cell lysates from untransfected HEK293T cells; Right: Cell lysates from HEK293T cells transfected with RC208223 using transfection reagent MegaTran 2.0 (Cat# [TT210002]).