

Product datasheet for **RC208221**

JPH4 (NM_032452) Human Tagged ORF Clone

Product data:

Product Type:	Expression Plasmids
Product Name:	JPH4 (NM_032452) Human Tagged ORF Clone
Tag:	Myc-DDK
Symbol:	JPH4
Synonyms:	JP4; JPHL1
Mammalian Cell Selection:	Neomycin
Vector:	pCMV6-Entry (PS100001)
E. coli Selection:	Kanamycin (25 ug/mL)



[View online »](#)

ORF Nucleotide Sequence:

>RC208221 representing NM_032452
 Red=Cloning site Blue=ORF Green=Tags(s)

TTTTGTAATACGACTCACTATAGGGCGGCCGGGAATTCGTCGACTGGATCCGGTACCGAGGAGATCTGCC
 GCC**CGGATCGCC**

ATGTC~~CCCCGGGGCAAGTT~~CGACTTTGACGACGGGGCTGCTACGTGGGGGGCTGGGAGCGGGGCGGG
 CACATGGCTACGGCGTGTGCACGGGCCCGGGCCAGGGCGAGTACAGCGGCTGCTGGGCACACGGCTT
 CGAGTCACTGGGCGTCTTACGGGGCCCGGGACACAGCTACCAGGGCCACTGGCAGCAGGGCAAGCGC
 GAAGGGCTGGGCGTGGAGCGCAAGAGCCGCTGGACGTACCGCGCGAGTGGCTGGGCGGGCTGAAGGGG
 GCAGCGGCGTGTGGAAAGCGTGTCCGGCTGCGCTACGCCGGGCTTGGAAAGGACGTTTCCAGGACGG
 CTACGGCACTGAGACCTACTCCGACGGAGGCACCTACCAGGGCCAGTGGCAGGCCGGGAAGCGCCACGGC
 TACGGGGTACGCCAGAGTGTGCCCTACCATCAGGGCGCGTGTGCGCTCGCCCCCGGCACCTCCCTGG
 ATTCGGCCACAGCGACCCCGGACGCCACCCCGCCCTGCCCTTGGCGGGGACGAGGGAGGCAGCCCC
 CGCTCGGGCTCCCGGGCGGCTTCGTGTGGCCGGGCGGGGACGCCAGCGGCGCTGTCCGAAAG
 CGCACTCCAGCGGCCGGGATTCTTTCGCCGTTGCTGTGCTCAGCGGGCTCCGAGCGGGCGGAGCTC
 GCAGCTCCCTGGGAGCAAGCGAGGCTCCCTGCGCAGCGAGGTGAGCAGCGAGGTGGGCAGCACCGGACC
 GCCCGGCTCGGAGGCCAGCGGGCCCCGGCCGACGCGCCGCCCTCATCGAGGGCTCGGCCACAGAG
 GTGTACGGGGCGAGTGGCGCGCAGATCGGCGCAGCGGCTTCGGCGTCAGCCAGCGCTCCAACGGGCTGC
 GCTACGAGGGCGAGTGGTGGGCAACAGCGGCACGGCTACGGGCGCACCCCGCCCGGACGGCTCCCG
 CGAGGAGGGCAAGTACAAGCGCAACCGGCTGGTGCACGGCGGGCGGTCGCGAGTCTCCTGCCTGTGGC
 CCGCTCAGCGCCAGGAGATCGCCGCTGCCAGGGCAGCAGACGCCCTCCTAAAGGCAGTGGCAGCCAG
 TGTGCTGAGAAGGCGGTGGAGGCAGCTCGAATGGCCAACTGATAGCCAGGACCTGCAGCCCATGCTA
 GAGGCCCCAGGCCGAGACCCAGGCAGGACTCAGAAGTTCCGACACGGAGCCCTGGATGAGGACAGCC
 CTGGGGTATATGAGAACGGACTGACCCCTCAGAGGGATCCCCTGAACTGCCAGCAGTCTGCCTCCTC
 CCGCCAACCTGGCGACCCCTGCCTGCCGAGCCACTGCCTCCTGGAGGGGACCAGGGTCCCTTCTCC
 AGCCCCAAAGCTTGGCTGAGGAGTGGGGGGGGCAGGCGCACAGGCAGAGGAAGTACTGGCTATGAGG
 CTGAGGATGAGGCTGGGATGCAAGGGCCAGGGCCAGAGACGGTCCCCACTCCTCGGAGGCTGCAGCGA
 CAGTTCAGGAAGTCTTCAGAGGAGGAGGGGAGGATGAAGAGCCCTGCCCCGCTGAGGGCCCCAGCA
 GGCACGGAGCCTGAGCCATCGCCATGCTGGTCTGAGGGGCTGCTCCTCGAGGGGTGATGATGCTGGT
 GCCTGACAGAAGAGCTCGGGGAGCCGCTGCAACCGAGAGGCCTGCCAGCCGGGAGCTGCCAACCCCT
 GGTGTTGGGAGCCGTGGCCCTCCTGGACCTCAGCCTGGCATTCTGTTCTCCAGCTCCTCAC

ACGCGTACGCGGCCGCTCGAGCAGAACTCATCTCAGAAGAGGATCTGGCAGCAAATGATATCCTGGATT
 ACAAGGATGACGACGATAAGGTTTAA

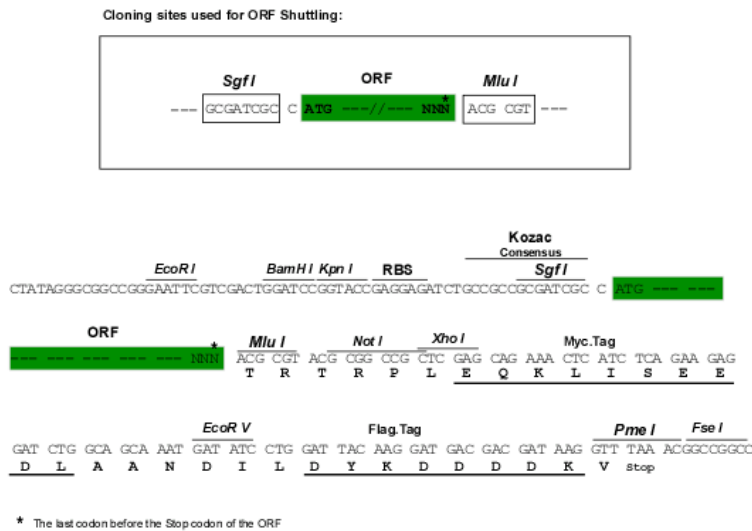
Protein Sequence:

>RC208221 representing NM_032452
 Red=Cloning site Green=Tags(s)

MSPGGKFD~~DDGGCYVGGWE~~AGRAHGYVCTGPGAQGEYSGCWAHGFESLGVFTGPGGHSYQGHWQGGKR
 EGLGVERKSRWYRGEWLGGKGRSGVWESVSGRLRYAGLWKDGFQDGYGTETYSDDGTYQGQWQAGKRHG
 YGVRQSVPYHQAALLRSPRRTSLDSGHSPPPTPPPPLPLPGDEGGSPASGSRGGFVLAGPGDADGASSRK
 RTPAAGGFFRRSLLL~~SGLRAGGRRSSLGSKRSLR~~RSEVSSEVSTGPPGSEASGPPAAAPPALIEGSATE
 VYAGEWRADRRSGFGVSQRSNGLRYEGEWLGNQRHGYGRTRPDGSREEGKYKRNRLVHGGRVRSLLPLA
 LRRGKVKKEVDRAVEGARRAVSAARQRQEI~~AAARAADALLKAVAASSVAEKAVEAARMAKLI~~AQDLQPML
 EAPRRRPRQDSEGS~~DTEPLDEDS~~PGVYENGLTPSEGSPELPS~~SPASSRQPWRPPACRSPL~~PPGGDQGPFS
 SPKAWPEEWGGAQAEELAGYEA~~EDEAGMQGPGPRDGSPLL~~GGCSDSSGSLREEEGE~~DEEPLPPL~~RAPA
 GTEPEPIAMLVLRGSSSRGHDAGCLTEELGEPAA~~TERPAQPGAANPLV~~VGAVALLDL~~SLAFLFS~~QLLT

TRTRPLEQKLI~~SEEDLAAND~~ILDYKDDDDKV

Chromatograms: https://cdn.origene.com/chromatograms/mg3903_c09.zip
Restriction Sites: SgfI-MluI
Cloning Scheme:



ACCN: NM_032452
ORF Size: 1884 bp

OTI Disclaimer: The molecular sequence of this clone aligns with the gene accession number as a point of reference only. However, individual transcript sequences of the same gene can differ through naturally occurring variations (e.g. polymorphisms), each with its own valid existence. This clone is substantially in agreement with the reference, but a complete review of all prevailing variants is recommended prior to use. [More info](#)

OTI Annotation: This clone was engineered to express the complete ORF with an expression tag. Expression varies depending on the nature of the gene.

Components: The ORF clone is ion-exchange column purified and shipped in a 2D barcoded Matrix tube containing 10ug of transfection-ready, dried plasmid DNA (reconstitute with 100 ul of water).

- Reconstitution Method:**
 1. Centrifuge at 5,000xg for 5min.
 2. Carefully open the tube and add 100ul of sterile water to dissolve the DNA.
 3. Close the tube and incubate for 10 minutes at room temperature.
 4. Briefly vortex the tube and then do a quick spin (less than 5000xg) to concentrate the liquid at the bottom.
 5. Store the suspended plasmid at -20°C. The DNA is stable for at least one year from date of shipping when stored at -20°C.

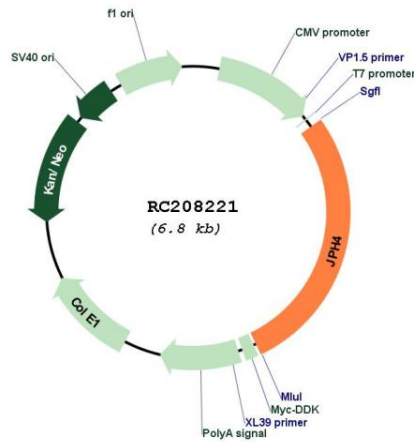
Note: Plasmids are not sterile. For experiments where strict sterility is required, filtration with 0.22um filter is required.

RefSeq: [NM_032452.1](#), [NP_115828.1](#)
RefSeq Size: 4396 bp

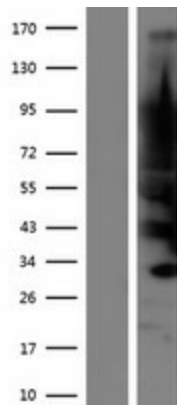
RefSeq ORF: 1887 bp
 Locus ID: 84502
 UniProt ID: [Q96JJ6](#)
 Cytogenetics: 14q11.2
 MW: 65.7 kDa

Gene Summary: This gene encodes a member of the junctophilin family of transmembrane proteins that are involved in the formation of the junctional membrane complexes between the plasma membrane and the endoplasmic/sarcoplasmic reticulum in excitable cells. The encoded protein contains a conserved N-terminal repeat region called the membrane occupation and recognition nexus sequence that is found in other members of the junctophilin family. Alternative splicing results in multiple transcript variants. [provided by RefSeq, Mar 2009]

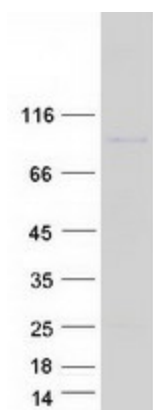
Product images:



Circular map for RC208221



Western blot validation of overexpression lysate (Cat# [LY432005]) using anti-DDK antibody (Cat# [TA50011-100]). Left: Cell lysates from untransfected HEK293T cells; Right: Cell lysates from HEK293T cells transfected with [RC228978] using transfection reagent MegaTran 2.0 (Cat# [TT210002]).



Coomassie blue staining of purified JPH4 protein (Cat# [TP308221]). The protein was produced from HEK293T cells transfected with JPH4 cDNA clone (Cat# RC208221) using MegaTran 2.0 (Cat# [TT210002]).