

Product datasheet for RC208215

ZNF428 (NM_182498) Human Tagged ORF Clone

Product data:

Product Type: Expression Plasmids
Product Name: ZNF428 (NM_182498) Human Tagged ORF Clone
Tag: Myc-DDK
Symbol: ZNF428
Synonyms: C19orf37; Zfp428
Mammalian Cell Selection: Neomycin
Vector: pCMV6-Entry (PS100001)
E. coli Selection: Kanamycin (25 ug/mL)
ORF Nucleotide Sequence: >RC208215 ORF sequence
 Red=Cloning site Blue=ORF Green=Tags(s)

TTTTGTAATACGACTCACTATAGGGCGGCCGGAATTCGTCGACTGGATCCGGTACCGAGGAGATCTGCC
 GCC**CGGATCGCC**

ATGACAGAGACCCGTGAGCCAGCTGAGACTGGGGCTACGCCAGCTTGAAGAAGATGATGATGACCTTT
 CCCCAGGCCCCGAGCATTCTCTGATTGAGAACTACTCTCTCAGAGCCGGACTCCGAAGAGGAAGAAGA
 TGAGGAGGAGGAAGAGGAGACCAGTACGATCCTGAATATGATCCTGGCTACAAGGTGAAGCAGCGC
 CTTGGCGGGGCGTGGTGGCCATCCCCTGGGCCCCCGTGCAGCCCAGCCCCGCCCCAGCCTTGCC
 AGCTCTGTGGCCGCTCACCCCTTGGGAGGCCACCCGGAACCCACCCTGCCGGCTCTGCTGCCCTGC
 TACAGCCCCCAGGAAGCACCAGCCCCTGAAGGCAGGGCCCTCGGGGAGGAAGAGGAGGAACCACCTCGG
 GCTGGGGAGGGCCGACCAGCTGGGCGGGAGGAGGAGGAAGAGGAGGAGGAGGAACCTACCACTGTA
 CGGAATGTGAGGATTCCTTCGACAACTGGGGAGCTGCACGGGCACTTCATGCTGCATGCCCGGGTGA
 GGTG

ACGCGTACGCGGCCGCTCGAGCAGAACTCATCTCAGAAGAGGATCTGGCAGCAAATGATATCCTGGATT
 ACAAGGATGACGACGATAAGGTTTAA

Protein Sequence: >RC208215 protein sequence
 Red=Cloning site Green=Tags(s)

MTETREPAETGGYASLEEDDDDLSPGPEHSSDSEYTLSEPDSEEEEEEEEEETDDPEYDPGYKVKQR
 LGGRRGPPSRAPRAAQPPAQPCQLCGRSPLGEAPPPTPPCRLCCPATAPQEAPAPEGRALGEEEEPPR
 AGEGRPAGREEEEEEGTYHCTECEDSFNLDLGHGFMLHARGEV

TRTRPLEQKLISEEDLAANDILDYKDDDDKV



[View online »](#)

Chromatograms: https://cdn.origene.com/chromatograms/mk6341_g09.zip

Restriction Sites: SgfI-MluI

Cloning Scheme:



ACCN: NM_182498

ORF Size: 564 bp

OTI Disclaimer: The molecular sequence of this clone aligns with the gene accession number as a point of reference only. However, individual transcript sequences of the same gene can differ through naturally occurring variations (e.g. polymorphisms), each with its own valid existence. This clone is substantially in agreement with the reference, but a complete review of all prevailing variants is recommended prior to use. [More info](#)

OTI Annotation: This clone was engineered to express the complete ORF with an expression tag. Expression varies depending on the nature of the gene.

Components: The ORF clone is ion-exchange column purified and shipped in a 2D barcoded Matrix tube containing 10ug of transfection-ready, dried plasmid DNA (reconstitute with 100 ul of water).

Reconstitution Method:

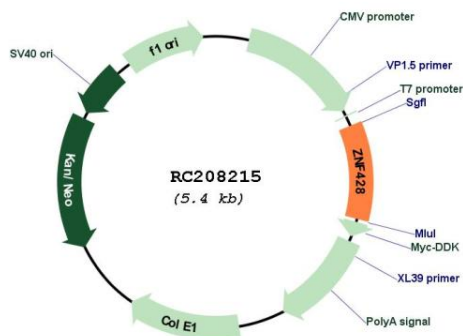
1. Centrifuge at 5,000xg for 5min.
2. Carefully open the tube and add 100ul of sterile water to dissolve the DNA.
3. Close the tube and incubate for 10 minutes at room temperature.
4. Briefly vortex the tube and then do a quick spin (less than 5000xg) to concentrate the liquid at the bottom.
5. Store the suspended plasmid at -20°C. The DNA is stable for at least one year from date of shipping when stored at -20°C.

Note: Plasmids are not sterile. For experiments where strict sterility is required, filtration with 0.22um filter is required.

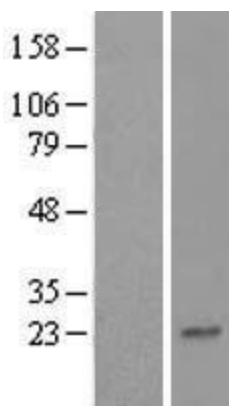
RefSeq: [NM_182498.1](#)

RefSeq Size: 1411 bp

RefSeq ORF: 567 bp
 Locus ID: 126299
 UniProt ID: [Q96B54](#)
 Cytogenetics: 19q13.31
 MW: 20.5 kDa

Product images:


Circular map for RC208215



Western blot validation of overexpression lysate (Cat# [LY405518]) using anti-DDK antibody (Cat# [TA50011-100]). Left: Cell lysates from untransfected HEK293T cells; Right: Cell lysates from HEK293T cells transfected with RC208215 using transfection reagent MegaTran 2.0 (Cat# [TT210002]).