

Product datasheet for **RC208211**

FUNDC1 (NM_173794) Human Tagged ORF Clone

Product data:

Product Type: Expression Plasmids
Product Name: FUNDC1 (NM_173794) Human Tagged ORF Clone
Tag: Myc-DDK
Symbol: FUNDC1
Vector: pCMV6-Entry (PS100001)
E. coli Selection: Kanamycin (25 ug/mL)
Cell Selection: Neomycin
ORF Nucleotide Sequence: >RC208211 ORF sequence
Red=Cloning site Blue=ORF Green=Tags(s)

TTTTGTAATACGACTCACTATAGGGCGGCCGGAATTCGTCGACTGGATCCGGTACCGAGGAGATCTGCC
GCC**CGATCGC**C

ATGGCGACCCGGAACCCCTCCCAAGACTATGAAAGTGATGACGACTTTATGAAGTGTGGATTTAA
CTGAGTATGCAAGAAGACACACAGTGGTGGAAATCGAGTGTGGCCACAGTTCGGGACCTATGGTAGAAAA
ATACTCAGTAGCTACACAGATTGTAATGGGTGGCTTACTGGCTGGTGTGCAGGATTTCTGTCCAGAAA
GTTGGAAAACCTGCAGCAACTGCAGTAGGTGGTGGCTTTCTTCTTCTCAGATTGCTAGTCATAGTGGCT
ATGTGCAGATTGACTGGAAGAGAGTTGAAAAAGATGTAATAAAGCAAAAAGACAGATTAAGAAAACGAGC
GAACAAAGCAGCACCTGAAATCAACAATTTAATTGAAGAAGCAACAGAATTTATCAAGCAGAACATTGTG
ATATCCAGTGGATTTGTGGGAGGCTTTTGTCTCGGACTTGCATCT

ACGCGTACGCGGCCGCTCGAGCAGAAACTCATCTCAGAAGAGGATCTGGCAGCAATGATATCCTGGATT
ACAAGGATGACGACGATAAGGTTTAA

Protein Sequence: >RC208211 protein sequence
Red=Cloning site Green=Tags(s)
MATRNPQQDYESDDDSYEVLDL TEYARRHQWNRVFGHSSGPMVEKYSVATQIVMGGVTGWCAGFLFQK
VGKLAATAVGGGFLLLQIASHSGYVQIDWKRVEKDVNKAQRQIKKRANKAAPEINNLIIEATEFIKQNIIV
ISSGFVGGFLLGLAS

TRTRPLEQKLI SEEDLAANDILDYKDDDDKV

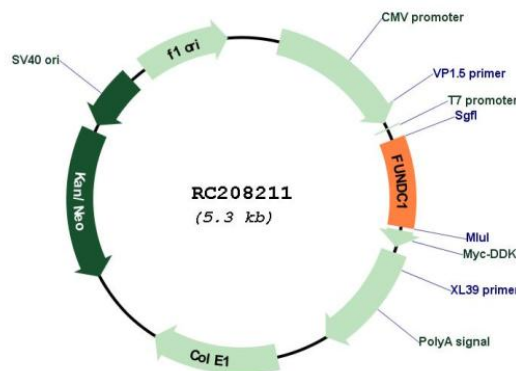
Chromatograms: https://cdn.origene.com/chromatograms/mk6352_h05.zip

Restriction Sites: SgfI-MluI



[View online »](#)

Cloning Scheme:

Plasmid Map:


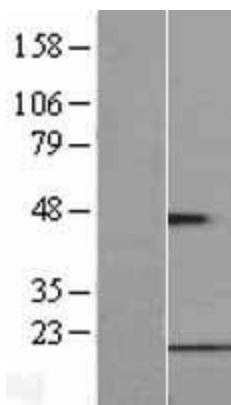
ACCN: NM_173794

ORF Size: 465 bp

OTI Disclaimer: The molecular sequence of this clone aligns with the gene accession number as a point of reference only. However, individual transcript sequences of the same gene can differ through naturally occurring variations (e.g. polymorphisms), each with its own valid existence. This clone is substantially in agreement with the reference, but a complete review of all prevailing variants is recommended prior to use. [More info](#)

OTI Annotation: This clone was engineered to express the complete ORF with an expression tag. Expression varies depending on the nature of the gene.

Components:	The ORF clone is ion-exchange column purified and shipped in a 2D barcoded Matrix tube containing 10ug of transfection-ready, dried plasmid DNA (reconstitute with 100 ul of water).
Reconstitution Method:	<ol style="list-style-type: none">1. Centrifuge at 5,000xg for 5min.2. Carefully open the tube and add 100ul of sterile water to dissolve the DNA.3. Close the tube and incubate for 10 minutes at room temperature.4. Briefly vortex the tube and then do a quick spin (less than 5000xg) to concentrate the liquid at the bottom.5. Store the suspended plasmid at -20°C. The DNA is stable for at least one year from date of shipping when stored at -20°C.
RefSeq:	<u>NM_173794.2, NP_776155.1</u>
RefSeq Size:	1170 bp
RefSeq ORF:	468 bp
Locus ID:	139341
UniProt ID:	<u>Q8IVP5</u>
Cytogenetics:	Xp11.3
MW:	17.2 kDa
Gene Summary:	This gene encodes a protein with a FUN14 superfamily domain. The function of the encoded protein is not known. [provided by RefSeq, Sep 2011]

Product images:

Western blot validation of overexpression lysate (Cat# [LY406572]) using anti-DDK antibody (Cat# [TA50011-100]). Left: Cell lysates from untransfected HEK293T cells; Right: Cell lysates from HEK293T cells transfected with RC208211 using transfection reagent MegaTran 2.0 (Cat# [TT210002]).