

Product datasheet for **RC208210**

TBC1D26 (NM_178571) Human Tagged ORF Clone

Product data:

Product Type:	Expression Plasmids
Product Name:	TBC1D26 (NM_178571) Human Tagged ORF Clone
Tag:	Myc-DDK
Symbol:	TBC1D26
Mammalian Cell Selection:	Neomycin
Vector:	pCMV6-Entry (PS100001)
E. coli Selection:	Kanamycin (25 ug/mL)
ORF Nucleotide Sequence:	>RC208210 ORF sequence Red=Cloning site Blue=ORF Green=Tags(s)

TTTTGTAATACGACTCACTATAGGGCGGCCGGAATTCGTCGACTGGATCCGGTACCGAGGAGATCTGCC
GCC**CGATCGCC**

ATGGAGATGGATGGGGACCCGTAACTGCCTGCCAGGGGCAAGGCAATATCATCATTACTAAGTATG
AGCAGGGACACCGAGCTGGGGCAGCAGTGGACTTGGGGCATGAGCAGGTTGATGTCAGAAAATACACCAA
TAACCTCGGGATTGTGCATGAGATGGAGCTGCCCCGCGTCAGTGCCCTGGAGGTGAAGCAAAGACGCAAG
GAAAGTAAACGTACCAACAAGTGGCAAAGATGCTTGCAGACTGGACAAAATATAGGAGCACCAAGAAGC
TGTCTCAAAGAGTATACAAAGTCATTCCCCTGGCGGTACGGGGCCGGGCGTGGTCACTTTTGTAGATAT
TGACAGAATCAAGTCCCAGAACCAGGCAAATATAAGGTCATGAAGGAGAAGGGCAAGAGGTCCTCCAGA
ATCATCCACTGCATCCAGCTAGATGTCAGCCACACCCTGCAGAAACACATGATGTTTCATAAAAGATTCTG
GAGTCAAGCAGCAGGAATTATGTGACATCCTCGTGGCCTATTCTGCATATAACCCTGAGGTGGGCTACCA
CAGGGACCTGAGCCGCATCACTGCCATCCTCCTGTGTCTGCCAGAGGAAGATGTTTTCTGGGCGCTT
ACCCAGTTGCTCGCTGGTGAAGGCACTCCCTGTGGTATTCTACAGCCAAATACTGCCTGGCTCGAGAA
GCTCCTATCGCACCAGGAGCAGGTGCTGCACAAGTCCTCCCAAAGATCA

ACGCGTACGCGGCCGCTCGAGCAGAACTCATCTCAGAAGAGGATCTGGCAGCAAATGATATCCTGGATT
ACAAGGATGACGACGATAAGGTTTAA



[View online »](#)

Protein Sequence: >RC208210 protein sequence
Red=Cloning site Green=Tags(s)

MEMDGDYPYNLPAQGQGNIIITKYEQGHRAAVIDLGHEQVDVRKYTNLGIIVHEMELPRVSALEVKQRRK
 ESKRTNKWQKMLADWTKYRSTKKLSQRVYKVIPLAVRGRAWSLLLDIDRIKSQNPVKYVMKEKGRSSR
 IIHCIQLDVSHTLQKHMMFIQRFVVKQQLCDILVAYSAYNPEVGYHRDLSRITAILLLCLPEEDVFWAL
 TQLLAGERHSLWYSTAQILPGSRSSYRTRSRCTSPSQRS

TRTRPLEQKLISEEDLAANDILDYKDDDDKV

Chromatograms: https://cdn.origene.com/chromatograms/mk6352_c06.zip

Restriction Sites: SgfI-MluI

Cloning Scheme:



ACCN: NM_178571

ORF Size: 750 bp

OTI Disclaimer: The molecular sequence of this clone aligns with the gene accession number as a point of reference only. However, individual transcript sequences of the same gene can differ through naturally occurring variations (e.g. polymorphisms), each with its own valid existence. This clone is substantially in agreement with the reference, but a complete review of all prevailing variants is recommended prior to use. [More info](#)

OTI Annotation: This clone was engineered to express the complete ORF with an expression tag. Expression varies depending on the nature of the gene.

Components: The ORF clone is ion-exchange column purified and shipped in a 2D barcoded Matrix tube containing 10ug of transfection-ready, dried plasmid DNA (reconstitute with 100 ul of water).

Reconstitution Method:

1. Centrifuge at 5,000xg for 5min.
2. Carefully open the tube and add 100ul of sterile water to dissolve the DNA.
3. Close the tube and incubate for 10 minutes at room temperature.
4. Briefly vortex the tube and then do a quick spin (less than 5000xg) to concentrate the liquid at the bottom.
5. Store the suspended plasmid at -20°C. The DNA is stable for at least one year from date of shipping when stored at -20°C.

Note: Plasmids are not sterile. For experiments where strict sterility is required, filtration with 0.22um filter is required.

RefSeq: [NM_178571.3](#)

RefSeq Size: 1883 bp

RefSeq ORF: 753 bp

Locus ID: 353149

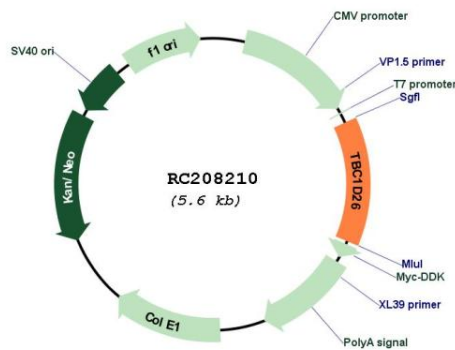
UniProt ID: [Q86UD7](#)

Cytogenetics: 17p12

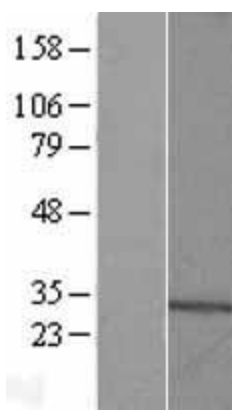
MW: 28.9 kDa

Gene Summary: May act as a GTPase-activating protein for Rab family protein(s).[UniProtKB/Swiss-Prot Function]

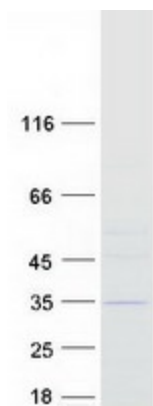
Product images:



Circular map for RC208210



Western blot validation of overexpression lysate (Cat# [LY405874]) using anti-DDK antibody (Cat# [TA50011-100]). Left: Cell lysates from untransfected HEK293T cells; Right: Cell lysates from HEK293T cells transfected with RC208210 using transfection reagent MegaTran 2.0 (Cat# [TT210002]).



Coomassie blue staining of purified TBC1D26 protein (Cat# [TP308210]). The protein was produced from HEK293T cells transfected with TBC1D26 cDNA clone (Cat# RC208210) using MegaTran 2.0 (Cat# [TT210002]).