

Product datasheet for **RC208206**

Fibulin 2 (FBLN2) (NM_001998) Human Tagged ORF Clone

Product data:

Product Type:	Expression Plasmids
Product Name:	Fibulin 2 (FBLN2) (NM_001998) Human Tagged ORF Clone
Tag:	Myc-DDK
Symbol:	FBLN2
Vector:	pCMV6-Entry (PS100001)
E. coli Selection:	Kanamycin (25 ug/mL)
Cell Selection:	Neomycin
ORF Nucleotide Sequence:	>RC208206 representing NM_001998 Red=Cloning site Blue=ORF Green=Tags(s)

TTTTGTAATACGACTCACTATAGGGCGGCCGGGAATTCGTCGACTGGATCCGGTACCGAGGAGATCTGCC
GCC**CGATCGCC**

ATGGTGCTGCTCTGGGAGCCTGCAGGAGCCTGGCTTGCTCTGGGCCTGGCCCTGGCCTGGGCCACAGCG
TGGCCGACGCTGCCCCCTCGCAGGACTGCACGGCGTGGAGTGCCCGCCGCTGGAGAAGTGCATTGAGGA
GGCGCTGGAGCCGGGTGCTGTGCCACGTGTGTGCAGCAGGGCTGCGCCTGCGAGGGTACCCAGTAC
TATGACTGCCTACAGGGTGGCTTTCGTGCGCGGCCGCGTGCCTGCGCGGTCACTCCTATTTTGTGGACTTCG
GGAGCACTGAGTCTCCTGCCACCAGGCGCGGCAAGATCAGCTGCCAGTTCATGCTGTGCCCGGAGCT
GCCGCCAACTGCATCGAGGCTGTAGTGGTGGCTGACAGCTGCCACAGTGCAGGCGAGTGGGCTGCGTC
CACGCGGGCCACAAGTACGCCGCTGGCCACACTGTTACCTGCCGCCCTGCCGGGCTGCCACTGCCCTG
ACGCCGGTGGAGAGCTCATCTGCTACCAGCTCCCCGTTGCCACGGAACTTCTCAGATGCCGAGGAGGG
TGACCCCGAGCGACTACGAAGACCCCTACAGCTATGACCAGGAGGTGGCCGAGGTGGAAGCAGCAACA
GCCCTGGGGGTGAGTCCAGGCGGGTGCAGTCCAGGCAGGCGCAGGGGGCCCCCAGCTGCTCTGGGAG
GTGGGAGTCAAGCACTGTCCACCATCCAGGCACCCCCCTGGCCAGCTGTCTCTCCAGGCCACAGCGGC
TGCTGCCCTGGTCCCCAGCCCCAGTGCAGGCCAAAGCTAGGAGAGTGACCAGGACAGTGAAGGAGGAA
GAAGAGGAGGAGGAGGAGAGAGAGGAAATGGCTGTCACTGAGCAGCTGGCAGCAGGTGGCCACAGGGGGC
TGGATGGGCTGCCCACTACAGCCCCAGCTGGACCCAGTCTTCTATCCAGGAGGAGAGGGCAGAAGCTGG
GGCAAGGGCAGAAGCTGGGGCAAGGCCTGAAGAGAACCTCATCTGGATGCCCAAGCCACGTCCCCGAGC
ACTGGGCCGAGGGCGTGACGCATGCACCGAGCCTGGCAAGGCTGTCTCGTCCCAACTCAGGCCGTGC
CTGGCTCTCCAGGACCCAGTCAAGCCAGCCCCACAACATCTGTCCACATCACTGCCTGATGCAGC
ACAGACCCCAACTCTGTCCATTATCCCCAGAAGTGCCTGAAGGCTCCACCAAGGACTGATCGAGA
CTTGCTGCGCAGCGGACAGCAGTGGCCATTGACAATGACGAGTGCCTGGAGATCCCTGAGAGTGGCAC
TGAGGACAACGTCTGAGGACAGCCAGAGGCACTGCTGTGTCTCTACTTGCAGGAGAAGAGCTGCATG
GCCGGCTCTGGGAGCCAAGGAGGTTGAGACCTGTGGGCTGAGGACAACGACAGCTGCGGCATCTCCC
TGTACAAGCAATGCTGTGACTGCTGTGGCTGGCCCTCCGCGTGGGGCCAGGGCCAGTGTGTGAGTC
CAATCCTAACCTGGGCTATCCCTGCAATCATGTCATGCTCTCTGCTGTGAGGGTGAAGAGCCTCTCATA



View online »

```

GTACCTGAGGTTTCGCCGACCTCCAGAGCCCGCAGCTGCACCACGGAGAGTTCAGAGGCAGAGATGGCGG
GCCGAGAGGCCCTGTACTGGGCACAGAGGCCGAGCTGCCGAACAGCCTGCCGGGCGATGACCAGGATGA
GTGCCCTTCTCTCCCGGGAGAGCTGTGCCAGCACCTTTGCATCAATACTGTGGGTTCTTACCAGTGTGCC
TGCTTTCTCGGTTCTACTGCAGGACGATGGCCGCACTTGCCGCCCAGAGGGTACCCTCCACAGCCGG
AAGCCCCACAGGAGCCTGCACTGAAGTCAGAATTTCCAGGTGGCTCTAACACCATCCCGTGCCACT
GCCGACGCCAAATACCTGCAAAGACAATGGACCCTGCAAGCAGGTGTGCAGCACTGTTGGGGGCTGACC
ATATGCTCCTGTTTTCCGGCTATGCCATCATGGCGGATGGCGTGTCTGTGAAGACATCAACGAGTGTG
TGACGGACCTGCACACGTGCAGCCGGGGCAGCACTGTGTGAACACACTGGGCTCCTTCCACTGCTACAA
GGCACTCACTGTGAGCCAGGCTATGCCCTCAAGGATGGCGAGTGCAGAACGCTGGATGAGTGTGCGATG
GGCACGCACACCTGCCAGCCGGGCTTCTGTGCCAGAACACCAAGGGCTCCTTCTACTGCCAGGCCAGGC
AGCGCTGCATGGATGGCTTCTGCAGGATCCTGAAGGCAACTGTGTGGACATCAACGAGTGCACGCTACT
GTCCGAGCCATGTCGGCCAGGCTTACGTGCATCAACACGGTGGGCTCCTACACGTGCCAGAGGAACCCG
CTGATCTGCGCGCGGGTACCACGCCAGCGATGATGGGCAAGTGTGTGGACGTGAATGAGTGTGAGA
CAGGTGTGCACCGCTGCGGTGAGGGCAAGTGTGCCACAACCTCCTGGCTCCTACCGCTGTGACTGCAA
AGCCGGCTTTACGCGGATGCCCTCGGCCGGGGTGCATCGACGTGAATGAGTGTGGGCTCGCCAGGC
CGCTGTGCCAGCACACGTGTGAGAACACACTCGGCTCCTACCGTGTCTGCGCTCCGGGTTCTGTC
TAGCAGCGGACGCAAGCGCTGTGAAGACGTGAATGAGTGTGAGGCCAGCGCTGCAGCCAGGAGTGTGC
CAACATCTATGGCTCCTACCAGTGTACTGCCGCCAGGGTACCAGCTGGCTGAGGATGGGCACACCTGC
ACAGACATCGACGAGTGTGCTCAAGGCGCCGGCATCCTTGCACCTTCCGCTGTCTCAACGTGCCAGGGA
GCTACCAGTGTGCATGCCCTGAGCAGGGTACACCATGACGGCCAACGGGAGGTCTGCAAGGACGTGGA
TGAGTGTGCACCTGGTACCCACAACCTGTTCCGAGGCTGAGACCTGCCACAACATCCAGGGTAGCTCCGC
TGCTTCCGCTTAGAGTGTCTCCCAACTATGTCCAAGTCTCCAAAACGAAGTGCAGCGCACCCACGTGCC
ATGACTTCCGGAGTGCAGAACTCGCCAGCGGCATCACGCACTACCAGCTCAACTCCAGAGCGGCTCCT
CCTGGTGCCTGCGCATATCTTCCGATTGGCCCGCGCCAGCCTTACAGGGGGACACCATTGCCCTGAAAC
ATCATCAAGGCAATGAGGAGGGCTACTTTGGCACGCGCAGGCTCAATGCCTACACGGGTGTGGTCTACC
TGCAGCGGGCCGTGCTGGAGCCCGGGACTTTGCCCTGGACGTGGAGATGAAGCTCTGGAGGCAGGGCTC
CGTACCACCTTCTGGCCAAGATGCACATCTTCTTACCACCTTTGCCCTG

```

ACGCGTACGCGGCCGCTCGAGCAGAACTCATCTCAGAAGAGGATCTGGCAGCAAATGATATCCTGGATT
ACAAGGATGACGACGATAAGGTTTAA

Protein Sequence:

>RC208206 representing NM_001998
Red=Cloning site Green=Tags(s)

```

MVLLEWEPAGAWLALGLALALGPSVAAAAPRQDCTGVECPLENCIEEALEPGACCATCVQQGCACEGYQY
YDCLQGGFVRGRVPAGQSYFVDFGSTESCPPGGGKISCFMLCPPELLPNCIEAVVVADSCPQCGQVGCV
HAGHKYAAAGHTVHLPPCRACHCPDAGGELICYQLPGCHGNFSDAEEDPERHYEDPYSYDQEVAVEAAT
ALGGEVQAGAVQAGAGGPPAALGGGSQPLSTIQAPPWPAVLRPTAAAALGPPAPVQAKARRVTEDESEE
EEEEEREEMAVTEQLAAGGHRGLDGLPTTAPAGPSLPIQEERAEAGARAEAGARPEENILDAQATSRS
TGPEGVTHAPSLGKAALVPTQAVPGSPRDPVKPSPHNILSTSLPDAAWIPPTREVPRKPQVLPHSHVEED
TDPNSVHSIPRSSPEGSTKDLIETCCAAGQQWAIDNDECLIPESGTEDNVCRTAQRHCCVSYLQEKSCM
AGVLGAKEGETCGAEDNDSCGISLYKQCCDCCGLGLRVRAEQSCSNPNLGYPCNHVMLSCCEGEEPLI
VPEVRRPPEPAAAPRRVSEAEMAGREALSLGTEAELPNSLPGDDQDECLLLPGELCQHLCINTVGSYHCA
CFPGFSLQDDGRTCRPEGHPPQPEAPQEPALKSEFSQVASNTIPLPLQPNTCKDNGPCKQVCSTVGGSA
ICSCFPGYAIMADGVSCEDINECVTLHTCSRGEHCVNTLGSFHCKYKALTCCEPGYALKDGEDVDECAM
GTHTCQPGFLCQNTKGSFYCQARQRCMDGFLQDPEGNCVDINECTSLSEPCRPGFSCINTVGSYTCQRNP
LICARGYHASDDGAKCVDVNECETGVHRCGEGQVCHNLPGSYRCDCAGFQRDAFGRGIDVNECWASPG
RLCQHTCENTLGSYRCSASGFLLAADGKRCEDVNECEAQRCSQECANIYGSYQCYCRQGYQLAEDGHTC
TDIDECAQGAGILCTFRCLNVPGSYQCACPEQGYTMTANGRSCKDVDECALGTHNCSEAETCHNIQGSFR
CLRLECPNPNVQVSKTKCERTTCHDFLEQCNSPARI THYQLNFQTGLLVP AHIFRIGPAPAFTGDTIALN
I IKGNEEGYFGTRRLNAYTGVVYLQRAVLEPRDFALD VEMKLRWQGSVTTFLAKMHIFTTTAL

```

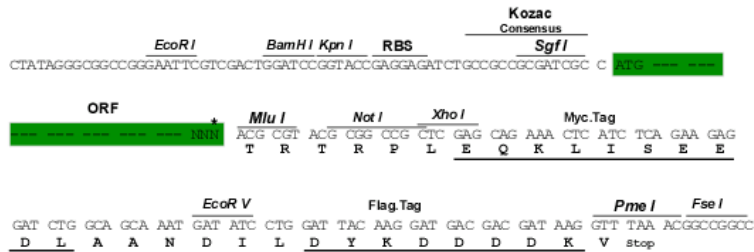
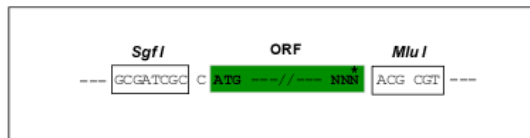
TRTRPLEQKLISEEDLAANDILDYKDDDDKV

Restriction Sites:

SgfI-MluI

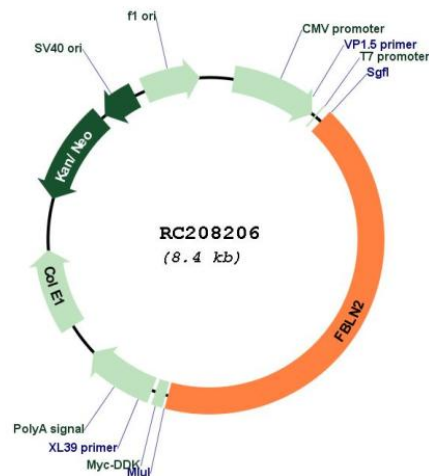
Cloning Scheme:

Cloning sites used for ORF Shuttling:



* The last codon before the Stop codon of the ORF

Plasmid Map:



ACCN: NM_001998

ORF Size: 3552 bp

OTI Disclaimer: Due to the inherent nature of this plasmid, standard methods to replicate additional amounts of DNA in E. coli are highly likely to result in mutations and/or rearrangements. Therefore, OriGene does not guarantee the capability to replicate this plasmid DNA. Additional amounts of DNA can be purchased from OriGene with batch-specific, full-sequence verification at a reduced cost. Please contact our customer care team at custsupport@origene.com or by calling 301.340.3188 option 3 for pricing and delivery.

The molecular sequence of this clone aligns with the gene accession number as a point of reference only. However, individual transcript sequences of the same gene can differ through naturally occurring variations (e.g. polymorphisms), each with its own valid existence. This clone is substantially in agreement with the reference, but a complete review of all prevailing variants is recommended prior to use. [More info](#)

OTI Annotation: This clone was engineered to express the complete ORF with an expression tag. Expression varies depending on the nature of the gene.

Components: The ORF clone is ion-exchange column purified and shipped in a 2D barcoded Matrix tube containing 10ug of transfection-ready, dried plasmid DNA (reconstitute with 100 ul of water).

Reconstitution Method:

1. Centrifuge at 5,000xg for 5min.
2. Carefully open the tube and add 100ul of sterile water to dissolve the DNA.
3. Close the tube and incubate for 10 minutes at room temperature.
4. Briefly vortex the tube and then do a quick spin (less than 5000xg) to concentrate the liquid at the bottom.
5. Store the suspended plasmid at -20°C. The DNA is stable for at least one year from date of shipping when stored at -20°C.

RefSeq:	NM_001998.3
RefSeq Size:	4193 bp
RefSeq ORF:	3555 bp
Locus ID:	2199
UniProt ID:	P98095
Cytogenetics:	3p25.1
Domains:	ANATO, EGF_CA, EGF, EGF
Protein Families:	Secreted Protein
MW:	126.51 kDa
Gene Summary:	This gene encodes an extracellular matrix protein, which belongs to the fibulin family. This protein binds various extracellular ligands and calcium. It may play a role during organ development, in particular, during the differentiation of heart, skeletal and neuronal structures. Alternatively spliced transcript variants encoding different isoforms have been identified. [provided by RefSeq, Jul 2008]