

## Product datasheet for **RC208204**

### **KPNA5 (NM\_002269) Human Tagged ORF Clone**

#### **Product data:**

Product Type:	Expression Plasmids
Product Name:	KPNA5 (NM_002269) Human Tagged ORF Clone
Tag:	Myc-DDK
Symbol:	KPNA5
Synonyms:	IPOA6; SRP6
Mammalian Cell Selection:	Neomycin
Vector:	pCMV6-Entry (PS100001)
E. coli Selection:	Kanamycin (25 ug/mL)



[View online »](#)

**ORF Nucleotide Sequence:**

>RC208204 ORF sequence  
 Red=Cloning site Blue=ORF Green=Tags(s)

TTTTGTAATACGACTCACTATAGGGCGGCCGGGAATTCGTCGACTGGATCCGGTACCGAGGAGATCTGCC  
 GCC**CGCATCGCC**

ATGGATGCCATGGCTAGTCCAGGAAAGATAACTATAGAATGAAAAGTTATAAGAATAAAGCCCTAAATC  
 CTC AAGAGATGCGTAGACGAAGAGAAGAAGGAATACAGCTTAGAAAACAAAAAAGAGAAGAACAGTT  
 GTTCAAACGCAGAAATGTCTATTTGCCAGAAATGATGAATCTATGCTTGAAAGTCTATACAGGATCCA  
 GATATTAGTTCCTACTGTACCCATTCCAGAGGAAGAAGTTGTTACTACAGATATGGTTCAGATGATTTTTT  
 CTAATAATGCTGATCAACAGCTAACAGCAACACAGAAATTTAGAAAGCTGCTTTCTAAAGAACCTAATCC  
 ACCAATAGATCAAGTTATACAGAAACCAGGAGTTGTACAGAGATTTGTGAAATTTCTTGAAGAAATGAA  
 AATTGCACTTTACAATTTGAAGCTGCATGGGCATTAACAATATAGCATCTGGAATTTTCTGCATACCA  
 AGGTAGTGATTGAAACTGGGCTGTTCCGATTTTTATCAAACCTTCTAATCTGAACATGAAGATGTTCA  
 GGAACAGGCTGTTGGGCACTTGGTAATATTGCTGGTGACAATGCAGAATGCAGAGATTTGTTTTGAAT  
 TGTGAAATACTTCCACCTCTTTAGAGTTATTAACAAATTCAAACAGACTCACAACAACAAGAAATGCCG  
 TGTGGGCCCTCTCAAATTTATGTAGAGGCAAAAACCTCTCCAAACTTTAGTAAGGTTTACCTTGCTT  
 AAATGCTCTGTCACGACTGTTGTTTAGCAGTGACCCAGATGTGTTAGCAGACGTGTGTTGGGCCCTTCT  
 TATCTCTCCGATGGACCAATGATAAAATTC AAGCAGTCATTGATTCTGGAGTCTGTGCAAGATTGGTGG  
 AACTTTTGATGCACAATGATTATAAAGTTGTATCACCTGCATTAAGGGCAGTTGGTAATATTGTGACTGG  
 TGATGATATTC AAACACAGGTAATTTGAATTGTTCTGCATTACCTGTCTTTACATTTATTGAGTAGC  
 CCAAAGGAGTCAATTAGAAAAGAAGCCTGCTGGACTGTTTCTAACATCACTGCTGGAAATAGAGCTCAGA  
 TTCAGGCTGTTATAGATGCAAAATTTTTCTGTTTTGATTGAGATTCTTCAGAAAAGCAGAGTTTCGTAC  
 CAGAAAAGAAGCAGCTTGGGCTATAACTAATGCAACATCAGGAGTACTCCAGAGCAAATAAGGTATTTG  
 GTAGCTTTAGGCTGCATTAACCCTTTGTGATCTTTGACTGTTATGGACTCCAAAATAGTCCAAGTGG  
 CTTTAAATGGACTTGAAAATATTTTACGCTTGGAGAACAAGAATCTAAGCAGAATGGAATAGGCATTAA  
 TCCATACTGTGCTCTCATTGAAGAAGCATATGGTCTGGATAAAATGAGTTTTTGCAAAGCCATGAAAAT  
 CAGGAAATTTACCAGAAGGCATTTGATCTGATTGAACATTACTTTGGTGTAGAAGAAGATGACCCAGCA  
 TTGTACCTCAGGTGGATGAAAACCAACAACAGTTTATATTT CAGCAGCAGGAAGCACAATGGATGGATT  
 TCAACTT

**ACGCGT**ACGCGGCCGCTCGAGCAGAAACTCATCTCAGAAGAGGATCTGGCAGCAAATGATATCCTGGATT  
 ACAAGGATGACGACGATAAGGTTTAA

**Protein Sequence:**

>RC208204 protein sequence  
 Red=Cloning site Green=Tags(s)

MDAMASPGKDNRYRMKSYKNKALNPQEMRRRREEEIGIQLRKQKREEQLFKRRNVYLPNDESMLESPIDP  
 DISSTVPIPEEEVVTTDMVQMIFSNADQQLTATQKFRKLLSKEPNPIDQVIQKPGVVQRFVKFLERNE  
 NCTLQFEAAWALTNIASGTFLHTKVVIETGAVPIFIKLLNSEHEDVQEAVWALGNIAGDNAECRDFVLN  
 CEILPPLLELLTNSNRLTTTRNAVWALS NL CRGKNPPPNF SKVSPCLNLSRLLFSSDPDVLADVCWALS  
 YLSDGPNDKIQAVIDSGVCRRLVELLMHNDYKVVSPALRAVGNI VTGDDIQTQVILNCSALPCLLHLLSS  
 PKESIRKEACWTVSNITAGNRAQIQAVIDANIFPVLIEILQKAEFRTRKEAAWAITNATSGGTPEQIRYL  
 VALGCIKPLCDLLVMDSKIVQVALNGLNLRLEGEQESKQNGIGINPYCALIEEAYGLDKIEFLQSHEN  
 QEIYQKAFDLIEHYFGVEEDDPSIVPQVDENQQQFIFQQQEAPMDGFQL

**TRTRPLEQKLI**SEEDLAANDILDYKDDDDKV

**Chromatograms:**

[https://cdn.origene.com/chromatograms/mk6126\\_g09.zip](https://cdn.origene.com/chromatograms/mk6126_g09.zip)

**Restriction Sites:**

Sgfl-Mlul

**Cloning Scheme:**

**ACCN:** NM\_002269

**ORF Size:** 1617 bp

**OTI Disclaimer:** The molecular sequence of this clone aligns with the gene accession number as a point of reference only. However, individual transcript sequences of the same gene can differ through naturally occurring variations (e.g. polymorphisms), each with its own valid existence. This clone is substantially in agreement with the reference, but a complete review of all prevailing variants is recommended prior to use. [More info](#)

**OTI Annotation:** This clone was engineered to express the complete ORF with an expression tag. Expression varies depending on the nature of the gene.

**Components:** The ORF clone is ion-exchange column purified and shipped in a 2D barcoded Matrix tube containing 10ug of transfection-ready, dried plasmid DNA (reconstitute with 100 ul of water).

- Reconstitution Method:**
1. Centrifuge at 5,000xg for 5min.
  2. Carefully open the tube and add 100ul of sterile water to dissolve the DNA.
  3. Close the tube and incubate for 10 minutes at room temperature.
  4. Briefly vortex the tube and then do a quick spin (less than 5000xg) to concentrate the liquid at the bottom.
  5. Store the suspended plasmid at -20°C. The DNA is stable for at least one year from date of shipping when stored at -20°C.

**RefSeq:** [NM\\_002269.3](#)
**RefSeq Size:** 2172 bp

**RefSeq ORF:** 1620 bp

**Locus ID:** 3841

**UniProt ID:** [O15131](#)

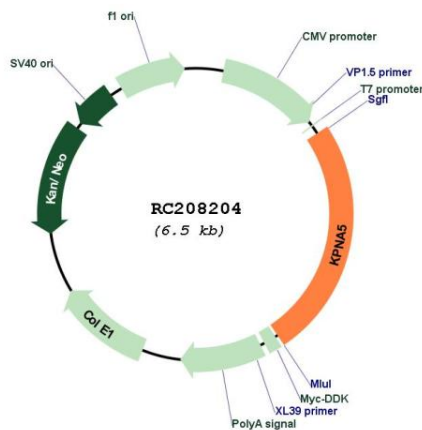
**Cytogenetics:** 6q22.1

**Domains:** Armadillo\_seg, IBB

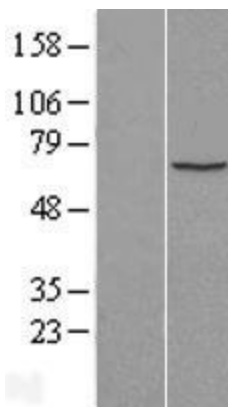
**MW:** 60.7 kDa

**Gene Summary:** The transport of molecules between the nucleus and the cytoplasm in eukaryotic cells is mediated by the nuclear pore complex (NPC) which consists of 60-100 proteins and is probably 120 million daltons in molecular size. Small molecules (up to 70 kD) can pass through the nuclear pore by nonselective diffusion; larger molecules are transported by an active process. Most nuclear proteins contain short basic amino acid sequences known as nuclear localization signals (NLSs). KPNA5 protein belongs to the importin alpha protein family and is thought to be involved in NLS-dependent protein import into the nucleus. [provided by RefSeq, Jul 2008]

**Product images:**



Circular map for RC208204



Western blot validation of overexpression lysate (Cat# [LY400823]) using anti-DDK antibody (Cat# [TA50011-100]). Left: Cell lysates from untransfected HEK293T cells; Right: Cell lysates from HEK293T cells transfected with RC208204 using transfection reagent MegaTran 2.0 (Cat# [TT210002]).