

Product datasheet for **RC208201**

ZNF230 (NM_006300) Human Tagged ORF Clone

Product data:

Product Type:	Expression Plasmids
Product Name:	ZNF230 (NM_006300) Human Tagged ORF Clone
Tag:	Myc-DDK
Symbol:	ZNF230
Synonyms:	FDZF2
Mammalian Cell Selection:	Neomycin
Vector:	pCMV6-Entry (PS100001)
E. coli Selection:	Kanamycin (25 ug/mL)



[View online »](#)

ORF Nucleotide Sequence:

>RC208201 ORF sequence
 Red=Cloning site Blue=ORF Green=Tags(s)

TTTTGTAATACGACTCACTATAGGGCGGCCGGAATTCGTCGACTGGATCCGGTACCGAGGAGATCTGCC
 GCC**CGATCGCC**

ATGACCACATTCAAGGAGCAGTGACCTTCAAGGATGTGGCTGTGTTCTTCACTGAGGAGGAAGTGGGG
 TACTGGACCTGCCAGAGGAAGCTGTACCAAGACGTGATGCTTGAGAATTACGAACCTGCTGTCACT
 GGGGCATCAACATTCCACCTTTCCACTTCTAAGGGAAGAAAAGTTTTGGATGATGGAGACAGCAACC
 CAAAGAGAAGGAAATTCAGGCGCAAGACTATTGCGGAAGCAGGACCACATGAAGACTGCCCTTGCCAGC
 AAATCTGGGAACAACTGCAAGTGACTTAACCCAGTCTCAAGACTCCATCATAAAATTTCTCACTTCTT
 TGAACAAGGTGATGTCCCTCCAGGTTGAGGCAGGACTATCTATAATTCATACAGGACAGAAACCTTCA
 CAGAATGGGAAGTGAACAGTCCTTCAGTGATGTTGCCATCTTGATCCTCCTCAGCAGTTCCTACTCAG
 GAGAGAAGTCTCATACTGCAATGAGTGTGAAAAAGCTTCTGTTACATCTCAGCTTTCGTATTCACCA
 GAGAGTTCCTTGAAGAGAACTCTAAGTGTGACATGCGTGGTAAGGAATTCAGTCAGAGCTCATGT
 CTGCAAACTCGTGAGAGAGTCCACTGGAGAGAAACCATTCAAATGTGAGCAATGTGGAAAGGCTTCA
 GATGTAGAGCGATACTTCAAGTTCACTGCAAAATACACACAGGAGAGAAAACCTTATATTTGTGAGAAATG
 TGGGAGGGCTTCATTACGATTTCCAGCTTCAGAAACATCAGATAATTCATACTGGGGAGAAGCCGTTT
 AAATGTGAAATATGTGGTAAGAGCTTCTGCCTTAGGTCAAGTCTTAATAGGCATTGCATGGTCCACACAG
 CAGAGAACTGTACAAATCTGAGGAGTGTGAAAAAGGCTTCACTGATAGCCTAGATTTGCATAAGCATCA
 GATAATTCACACAGGACAGAAACCGTACAATTGTAAGAATGTGGGAAGAGCTTCAGATGGTCCCTCATAT
 CTTTTGATCCATCAGCGAATCCACAGTGGAGAAAAACCATACAGATGTGAGGAGTGTGGGAAGGGCTACA
 TTAGTAAGTCAGGTCTTAACCTTGACAGGAGGTTCCATACTGGAGAGAGACCTTATAATTGTAAGGAATG
 TGGGAAGAGCTTTAGCCGGCTTCAAGTATTTGAATCATAAGAACTCCACTGCCGAAAAAACCTTTC
 AAATGTGAGGATTGTGGAAAGAGGCTTGTACCCGGTCTTCTGTAAAGACCAACAGGAGACCACAATG
 GAGAAAACTCATCAAATGTGAGGACTGTGGGAAGCGCTACAAGAGCGCTTGAATCTGGATATAATTTT
 ATCATTATTTTTAAATGATATG

**ACCGGTACGCGGCCGCTCGAGCAGAAACTCATCTCAGAAGAGGATCTGGCAGCAATGATATCCTGGATT
 ACAAGGATGACGACGATAAGGTTTAA**

Protein Sequence:

>RC208201 protein sequence
 Red=Cloning site Green=Tags(s)

MTTFKEAVTFKDVAVFFTEEELGLLDPAQRKLYQDVMLENFTNLLSVGHQPFHPFHLREEKFWMMETAT
 QREGNSGGKTIIEAGPHEDCPCQQIWEQTASDLTQSQDSIINNSHFFEQGDVPSQVEAGLSIIHTGQKPS
 QNGKCKQSFSDVAIFDPPQQFHSGEKSHTCNECGKSFYISALRIHQRVHLREKLSKCDMRGKEFSQSSC
 LQTRERVHTGEKPFKCEQCGKGFRCRAILQVHCKLHTGEKPYICEKCGRAFIHDFLQKHQIHTGEKPF
 KCEICGKSFCLRSSLNHRMCMVHTAEKLYKSEECGKGFTDSLHLKHQIHTGQKPYNCKEKGKSFWRSSY
 LLIHQRIHSGEKPYRCEECGKGYISKSGNLHQRVHTGERPYNCKEKGKSF SRASSILNHKHLHCRKPPF
 KCEDCGKRLVHRSFKDQGDHNGENSSKCEDCGKRYKRRLNLDIILSLFLNDM

TRTRPLEQKLI SEEDLAANDILDYKDDDDKV

Chromatograms:

https://cdn.origene.com/chromatograms/mk6546_c05.zip

Restriction Sites:

Sgfl-Mlul

Cloning Scheme:

Cloning sites used for ORF Shutting:



* The last codon before the Stop codon of the ORF

ACCN: NM_006300

ORF Size: 1422 bp

OTI Disclaimer: The molecular sequence of this clone aligns with the gene accession number as a point of reference only. However, individual transcript sequences of the same gene can differ through naturally occurring variations (e.g. polymorphisms), each with its own valid existence. This clone is substantially in agreement with the reference, but a complete review of all prevailing variants is recommended prior to use. [More info](#)
OTI Annotation: This clone was engineered to express the complete ORF with an expression tag. Expression varies depending on the nature of the gene.

Components: The ORF clone is ion-exchange column purified and shipped in a 2D barcoded Matrix tube containing 10ug of transfection-ready, dried plasmid DNA (reconstitute with 100 ul of water).

Reconstitution Method:

1. Centrifuge at 5,000xg for 5min.
2. Carefully open the tube and add 100ul of sterile water to dissolve the DNA.
3. Close the tube and incubate for 10 minutes at room temperature.
4. Briefly vortex the tube and then do a quick spin (less than 5000xg) to concentrate the liquid at the bottom.
5. Store the suspended plasmid at -20°C. The DNA is stable for at least one year from date of shipping when stored at -20°C.

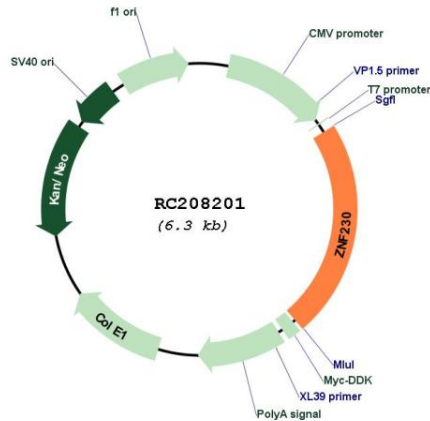
RefSeq: [NM_006300.4](#)
RefSeq Size: 4132 bp

RefSeq ORF: 1425 bp

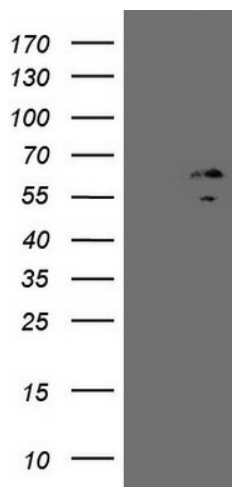
Locus ID: 7773

UniProt ID: [Q9UIE0](#)
Cytogenetics: 19q13.31

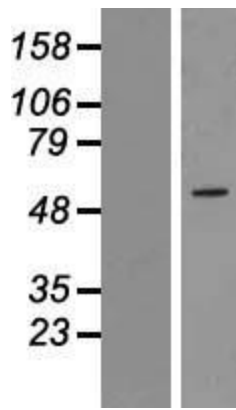
Domains: KRAB, zf-C2H2
Protein Families: Transcription Factors
MW: 54.5 kDa
Gene Summary: May be involved in transcriptional regulation.[UniProtKB/Swiss-Prot Function]

Product images:


Circular map for RC208201



HEK293T cells were transfected with the pCMV6-ENTRY control (Cat# [PS100001], Left lane) or pCMV6-ENTRY ZNF230 (Cat# RC208201, Right lane) cDNA for 48 hrs and lysed. Equivalent amounts of cell lysates (5 ug per lane) were separated by SDS-PAGE and immunoblotted with anti-ZNF230 (Cat# [TA809102])(1:500). Positive lysates [LY416742] (100ug) and [LC416742] (20ug) can be purchased separately from OriGene.



Western blot validation of overexpression lysate (Cat# [LY416742]) using anti-DDK antibody (Cat# [TA50011-100]). Left: Cell lysates from untransfected HEK293T cells; Right: Cell lysates from HEK293T cells transfected with RC208201 using transfection reagent MegaTran 2.0 (Cat# [TT210002]).