

Product datasheet for **RC208199**

GALNT7 (NM_017423) Human Tagged ORF Clone

Product data:

Product Type:	Expression Plasmids
Product Name:	GALNT7 (NM_017423) Human Tagged ORF Clone
Tag:	Myc-DDK
Symbol:	GALNT7
Synonyms:	GALNAC-T7; GalNAcT7
Mammalian Cell Selection:	Neomycin
Vector:	pCMV6-Entry (PS100001)
E. coli Selection:	Kanamycin (25 ug/mL)



[View online »](#)

ORF Nucleotide
Sequence:

>RC208199 ORF sequence

Red=Cloning site Blue=ORF Green=Tags(s)

TTTTGTAATACGACTCACTATAGGGCGGCCGGAATTCGTCGACTGGATCCGGTACCGAGGAGATCTGCC
GCCGCGATCGCCATGAGGCTGAAGATTGGATTCATCTTACGCAGTTTCTGGTGGTGGGAAGCTTCTGGGGCTAGTGGTCC
TCTGGTCTTCCCTGACCCGCGGCCGGACGACCCAAGCCCGCTGAGCAGGATGAGGGAAGACAGAGATGT
CAATGACCCCATGCCAACCAGGCGGCAATGGACTAGCTCCTGGGGAGGACAGATTCAAACCTGTGGTA
CCATGGCCTCATGTTGAAGGAGTAGAAGTGGACTTAGAGTCTATTAGAAGAATAACAAGGCCAAAAATG
AACAAAGACACCATGCTGGAGGAGATCCAGAAAAGATATCATGCAGAGGCAGTATCTCACATTTAAGCC
TCAGACATTACCTACCATGATCCTGTGCTTCGCCAGGGATCCTCGGTAACCTTTGAACCCAAAGAACCT
GAGCCTCCTGGAGTGGTTGGTGGCCCTGGAGAGAAAGCCAAGCCATTGGTTTTGGGACCAGAATTCAAAC
AAGCAATCAAGCCAGCATTAAAGAGTTTGGATTTAACATGGTGGCAAGTACATGATCTCACTGGACCG
CAGCGTCAATGACTTACGCCAAGAAGAATGCAAGTATTGGCATTATGATGAAAACCTTGCTCACTTCGAGC
GTTGTCATTGTCTTCCATAATGAAGGATGGTCAACCCCTCATGAGAACAGTCCACAGTGTAATTTAAAGGA
CTCCAAGGAAATATTTAGCAGAAATTTGTGTTAATTGACGATTTTCAGTAATAAAGAACACTTAAAAAGAAA
ACTGGATGAATATATTAAGCTGTGGATGGCCTAGTGAAGGATTTTCGAAATGAAAGAAGGGGAGGTTTA
ATTC AAGCACGAAGTATTGGTGCCTCAGAAGGCTAAACTGGACAGGTTTTGATATACCTTGATGCCCACT
GTGAGGTGGCAGTTAACTGGTATGCACCACTTGTAGTCCCATATCTAAGGACAGAACCACTTTGCACTGT
GCCGCTTATAGATGTCATAAATGGCAACACATAGAAATATACCCCAAGGGGGTGGTATGAAGATGGG
TATGCCCGAGGAGCATGGGATTGGAGTATGCTCTGGAAACGGGTGCCTCTGACCCCTCAAGAGAAGAGAC
TGAGAAAAGACAAAACTGAACCGTATCGGTCCCAGCCATGGCTGGGGGATTATTTGCCATTGAACGAGA
GTTCTTCTTTGAATTGGGTCTCTATGATCCAGGTCTCCAGATTTGGGGTGGTAAAACTTTGAGATCTCA
TACAAGATATGGCAGTGTGGTGGCAAATTAATTATTTGTTCTTCTGTTGACATATCTACCGTC
TTGAGGGCTGGCAAGGAAATCCTCCGCCATTTATGTTGGGTCTTCTCCAACCTGGAAGAATTATGTTAG
AGTTGTGGAGTTTGGTGGGATGAATATAAAGACTACTTCTATGCTAGTCGTCCTGAATCGCAGGCATTA
CCATATGGGGATATATCGGAGCTGAAAAATTTGAGAAGATCACAACCTGCAAAAGTTTTAAGTGGTTCA
TGAAGAATAAGCTTATGATATCACCTCACACTACCTTTGCCACCCAAAAATGTTGACTGGGGAGAAAT
CAGAGGCTTCGAACTGCTTACTGCATTGATAGCATGGGAAAAACAAATGGAGGCTTTGTTGAACTAGGA
CCCTGCCACAGGATGGGAGGGAATCAGCTTTTCAGAATCAATGAAGCAAATCAACTCATGCAGTATGACC
AGTGTGTTGACAAAAGGGAGCTGATGGATCAAAGTTATGATTACACACTGTAAATCTAAATGAATTTAAGGA
ATGGCAGTACTTCAAGAACCTGCACAGATTTACTCATATTCCTTCAGGAAAGTGTGTTAGATCGCTCAGAG
GTCCTGCATCAAGTATTCATCTCCAATTGTGACTCCAGTAAAACGACTCAAAAATGGGAAATGAATAACA
TCCATAGTGTACGCGTACGCGGCCGCTCGAGCAGAACTCATCTCAGAAGAGGATCTGGCAGCAATGATATCCTGGATT
ACAAGGATGACGACGATAAGGTTTAA

Protein Sequence: >RC208199 protein sequence
Red=Cloning site Green=Tags(s)

MRLKIGFILRSLLVVGSFLGLVVLWSSLTPRPDDPSLSRMREDRDVNDPMPNRGGNGLAPGEDRFKPVV
 PWPVHVEGVEVDLESIRRINKAKNEQEHHAGGDSQKDIMQRQYLTFKPQTFYHDPVLRPGILGNFEPKEP
 EPPGVVGGPGEKAKPLVLGPEFKQAIQASIKEFGFMVASDMISLDRSVNDRQEECKYWHYDENLLTSS
 VVIVFHNEGWSTLMRTVHSVVIKRTPRKYLAIEIVLIDDFSNKEHLKEKLDEYIKLWNLVKVFRNERREGL
 IQARSIGAQAQKAKLGQVLIYLDHAHCEVAVNWAYAPLVAPISKDRITICTVPLIDVINGNTYEIIPQGGDEDG
 YARGAWDSMLWKRVPVLPQEKRLRKTTEPYRSPAMAGGLFAIEREFFELGLYDPGLQIWGGENFEIS
 YKIWQCGKLLFVPCSRVGHYRLEGWQGNPPPIYVGSPTLKNYVRVVEVWWEYKDYFYASRPESQAL
 PYGDISELKKFREDHNCKSFKWFMEIAYDITSHYPLPKNVWDWGEIRGFETAYCIDSMGKTNGGFVELG
 PCHRMGGNQLFRINEANQLMQYDQCLTKGADGSKVMITHCNLNEFKEWQYFKNLHRFTHIPSGKCLDRSE
 VLHQVFI SNCDSSKTTQKWEMNIHSV

TRTRPLEQKLISEEDLAANDILDYKDDDDKV

Chromatograms: https://cdn.origene.com/chromatograms/mk6513_g05.zip

Restriction Sites: SgfI-MluI

Cloning Scheme:



ACCN: NM_017423

ORF Size: 1971 bp

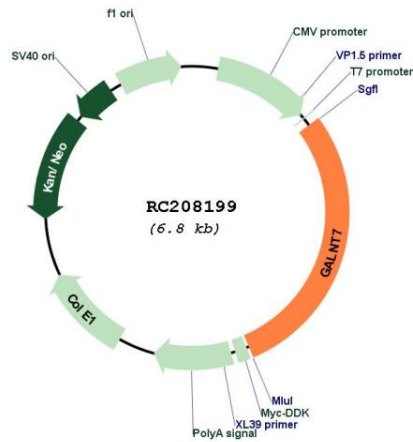
OTI Disclaimer: The molecular sequence of this clone aligns with the gene accession number as a point of reference only. However, individual transcript sequences of the same gene can differ through naturally occurring variations (e.g. polymorphisms), each with its own valid existence. This clone is substantially in agreement with the reference, but a complete review of all prevailing variants is recommended prior to use. [More info](#)

OTI Annotation: This clone was engineered to express the complete ORF with an expression tag. Expression varies depending on the nature of the gene.

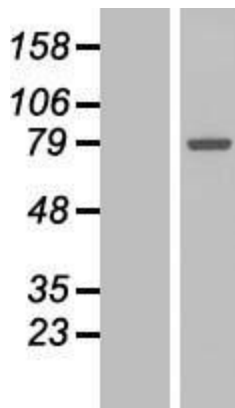
Components: The ORF clone is ion-exchange column purified and shipped in a 2D barcoded Matrix tube containing 10ug of transfection-ready, dried plasmid DNA (reconstitute with 100 ul of water).

Reconstitution Method:	<ol style="list-style-type: none">1. Centrifuge at 5,000xg for 5min.2. Carefully open the tube and add 100ul of sterile water to dissolve the DNA.3. Close the tube and incubate for 10 minutes at room temperature.4. Briefly vortex the tube and then do a quick spin (less than 5000xg) to concentrate the liquid at the bottom.5. Store the suspended plasmid at -20°C. The DNA is stable for at least one year from date of shipping when stored at -20°C.
RefSeq:	NM_017423.3
RefSeq Size:	4339 bp
RefSeq ORF:	1974 bp
Locus ID:	51809
UniProt ID:	Q86SF2
Cytogenetics:	4q34.1
Domains:	RICIN, Glycos_transf_2
Protein Families:	Transmembrane
Protein Pathways:	Metabolic pathways, O-Glycan biosynthesis
MW:	75.4 kDa
Gene Summary:	<p>This gene encodes GalNAc transferase 7, a member of the GalNAc-transferase family. The enzyme encoded by this gene controls the initiation step of mucin-type O-linked protein glycosylation and transfer of N-acetylgalactosamine to serine and threonine amino acid residues. This enzyme is a type II transmembrane protein and shares common sequence motifs with other family members. Unlike other family members, this enzyme shows exclusive specificity for partially GalNAc-glycosylated acceptor substrates and shows no activity with non-glycosylated peptides. This protein may function as a follow-up enzyme in the initiation step of O-glycosylation. [provided by RefSeq, Jul 2008]</p>

Product images:



Circular map for RC208199



Western blot validation of overexpression lysate (Cat# [LY413781]) using anti-DDK antibody (Cat# [TA50011-100]). Left: Cell lysates from untransfected HEK293T cells; Right: Cell lysates from HEK293T cells transfected with RC208199 using transfection reagent MegaTran 2.0 (Cat# [TT210002]).