

Product datasheet for **RC208197**

Pellino 1 (PELI1) (NM_020651) Human Tagged ORF Clone

Product data:

Product Type:	Expression Plasmids
Product Name:	Pellino 1 (PELI1) (NM_020651) Human Tagged ORF Clone
Tag:	Myc-DDK
Symbol:	Pellino 1
Mammalian Cell Selection:	Neomycin
Vector:	pCMV6-Entry (PS100001)
E. coli Selection:	Kanamycin (25 ug/mL)
ORF Nucleotide Sequence:	>RC208197 ORF sequence Red=Cloning site Blue=ORF Green=Tags(s)

TTTTGTAATACGACTCACTATAGGGCGGCCGGAATTCGTCGACTGGATCCGGTACCGAGGAGATCTGCC
GCC**CGATCGCC**

ATGTTTTCTCCTGATCAAGAAAATCATCCATCTAAAGCACCAGTAAAATATGGTGAACCTATTGTCTTAG
GGTATAATGGGTCTCTCCAAATGGCGATAGAGGAAGGAGGAAAAGTAGGTTTGCCTTTGTTAAAAGACC
TAAGGCAAATGGGGTGAAGCCAGCACTGTGCATATTGCTTGTACTCCTCAGGCTGCAAAGGCAATAAGC
AACAAAGACCAGCATAGCATATCATATACTTTATCTCGGGCCAGACTGTGGTGGTTGAATATACTCATG
ACAGCAACACCGATATGTTTCAGATTGGCCGGTCGACTGAAAGCCCCATTGATTTGTAGTAACCTGACAG
GGTTCCTGGAAGTCAAAGTAATTCTGATACACAGTCAGTACAAAAGCACTATATCAAGATTTGCCTGCAGA
ATCATATGTGAACGGAATCCTCCCTTTACAGCACGGATTTATGCTGCAGGATTTGACTCATCAAAAAACA
TCTTTCTTGGGAGAAGGCTGCCAAATGGAAGACATCAGATGGACAGATGGATGGCTTGACCACTAATGG
TGTTCTTGTGATGCATCCACGCAATGGGTTACAGAAGACTCCAAGCCTGGAATATGGAGAGAAATATCG
GTGTGTGAAATGATTTAGCCTACGTGAAACCAGATCGGCTCAGCAGAGAGGAAAAATGGTGGAAATTG
AAACCAATCAGTTACAAGATGGCTCGTTAATTGACCTCTGTGGTGAACATTGTTATGGCGTACTGCAGA
AGGCCTTTCCCACTCCTACCGTGAAGCATTAGAAAGCTTTAAGACAGGAAATCAATGCAGCACGACCT
CAGTGCCTGTAGGGTTCAACACTAGCATTTCCTAGTATGAAGAGGAAAGACGTTGTAGATGAAAAAC
AACCATGGGTATATCTAAACTGCGGCCATGTACATGGCTATCATAACTGGGAAACAAAGAAGAAGCTGA
TGGAAAAGATCGTGAATGTCTATGTGTAGGTCTGTTGGTCCCTATGTTCCCTGTGGCTTGGATGTGAA
GCTGGATTTTATGTGGACGCCGGCCCTCAACCCATGCGTTTAGCCCGTGTGGGCATGTGTGTTAGAAA
AGACAACCTGCCTATTGGTCCCAGATCCCCTTCTCATGGTACTCATACTTTTATGCAGCCTGTCCCTT
TTGTGCACATCAGTTGGCTGGTGAACAAGGCTACATCAGACTATTTTTCAAGGACCTCTAGAC

ACGCGTACGCGGCCGCTCGAGCAGAAACTCATCTCAGAAGAGGATCTGGCAGCAAATGATATCCTGGATT
ACAAGGATGACGACGATAAGGTTTAA



[View online »](#)

Protein Sequence: >RC208197 protein sequence
Red=Cloning site Green=Tags(s)

MFSPDQENHPSKAPVKY⁺GELIVLGYNGSLPNGDRGRRKSRFALFKRPKANGVKPSTVHIACTPQAAKAIS
 NKDQHSISYTL⁺SRAQTVVVEYTHDSNTDMFQIGRSTESPIDFVVTDTVPGSQSNSDTQSVQSTISR⁺FACR
 IICERNPPFTARIYAAGFDSSKNIFLGEKAAKWKTS⁺SDGQMDGLTTNGVLVMHPRNGFTEDSKPGI⁺WREIS
 VCGNVFSLRETRSAQQRGKMVEIETNQLQD⁺GSIDL⁺CGATLLWRTA⁺EGLSHTPTVKHLEALRQEINAARP
 QCPVGFNTLAFPSMKRKDVVDEKQPWVYL⁺NCGHVHGYHNWGNKEERD⁺GKDRECPMCRSVGPYVPLWL⁺GCE
 AGFYVDAGPPTHAFSPCGHVCSEKTTAYWSQIPLPHGTHTFHAACPFCAHQLAGEQGYIRLIFQGPLD

TRTRPLEQKLISEEDLAANDILDYKDDDDKV

Chromatograms: https://cdn.origene.com/chromatograms/mk6270_e05.zip

Restriction Sites: SgfI-MluI

Cloning Scheme:

Cloning sites used for ORF Shuttling:



* The last codon before the Stop codon of the ORF

ACCN: NM_020651

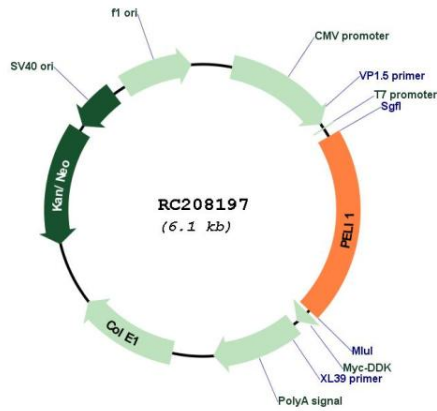
ORF Size: 1254 bp

OTI Disclaimer: Due to the inherent nature of this plasmid, standard methods to replicate additional amounts of DNA in E. coli are highly likely to result in mutations and/or rearrangements. Therefore, OriGene does not guarantee the capability to replicate this plasmid DNA. Additional amounts of DNA can be purchased from OriGene with batch-specific, full-sequence verification at a reduced cost. Please contact our customer care team at custsupport@origene.com or by calling 301.340.3188 option 3 for pricing and delivery.

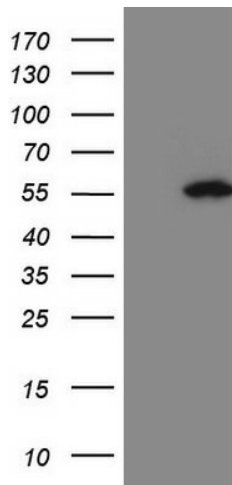
The molecular sequence of this clone aligns with the gene accession number as a point of reference only. However, individual transcript sequences of the same gene can differ through naturally occurring variations (e.g. polymorphisms), each with its own valid existence. This clone is substantially in agreement with the reference, but a complete review of all prevailing variants is recommended prior to use. [More info](#)

OTI Annotation:	This clone was engineered to express the complete ORF with an expression tag. Expression varies depending on the nature of the gene.
Components:	The ORF clone is ion-exchange column purified and shipped in a 2D barcoded Matrix tube containing 10ug of transfection-ready, dried plasmid DNA (reconstitute with 100 ul of water).
Reconstitution Method:	<ol style="list-style-type: none">1. Centrifuge at 5,000xg for 5min.2. Carefully open the tube and add 100ul of sterile water to dissolve the DNA.3. Close the tube and incubate for 10 minutes at room temperature.4. Briefly vortex the tube and then do a quick spin (less than 5000xg) to concentrate the liquid at the bottom.5. Store the suspended plasmid at -20°C. The DNA is stable for at least one year from date of shipping when stored at -20°C.
Note:	Plasmids are not sterile. For experiments where strict sterility is required, filtration with 0.22um filter is required.
RefSeq:	NM_020651.4
RefSeq Size:	3780 bp
RefSeq ORF:	1257 bp
Locus ID:	57162
UniProt ID:	Q96FA3
Cytogenetics:	2p14
Domains:	Pellino
MW:	46.3 kDa
Gene Summary:	E3 ubiquitin ligase catalyzing the covalent attachment of ubiquitin moieties onto substrate proteins. Involved in the TLR and IL-1 signaling pathways via interaction with the complex containing IRAK kinases and TRAF6. Mediates 'Lys-63'-linked polyubiquitination of IRAK1 allowing subsequent NF-kappa-B activation (PubMed:12496252, PubMed:17675297). Mediates 'Lys-48'-linked polyubiquitination of RIPK3 leading to its subsequent proteasome-dependent degradation; preferentially recognizes and mediates the degradation of the 'Thr-182' phosphorylated form of RIPK3 (PubMed:29883609). Negatively regulates necroptosis by reducing RIPK3 expression (PubMed:29883609). Mediates 'Lys-63'-linked ubiquitination of RIPK1 (PubMed:29883609).[UniProtKB/Swiss-Prot Function]

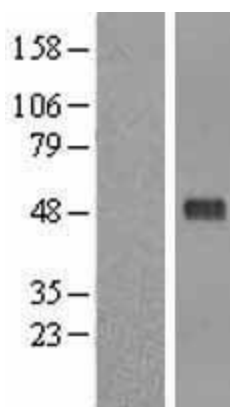
Product images:



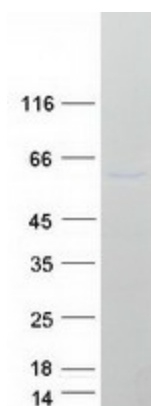
Circular map for RC208197



HEK293T cells were transfected with the pCMV6-ENTRY control (Cat# [PS100001], Left lane) or pCMV6-ENTRY PELI1 (Cat# RC208197, Right lane) cDNA for 48 hrs and lysed. Equivalent amounts of cell lysates (5 ug per lane) were separated by SDS-PAGE and immunoblotted with anti-PELI1 (Cat# [TA807629])(1:2000). Positive lysates [LY412313] (100ug) and [LC412313] (20ug) can be purchased separately from OriGene.



Western blot validation of overexpression lysate (Cat# [LY412313]) using anti-DDK antibody (Cat# [TA50011-100]). Left: Cell lysates from untransfected HEK293T cells; Right: Cell lysates from HEK293T cells transfected with RC208197 using transfection reagent MegaTran 2.0 (Cat# [TT210002]).



Coomassie blue staining of purified PELI1 protein (Cat# [TP308197]). The protein was produced from HEK293T cells transfected with PELI1 cDNA clone (Cat# RC208197) using MegaTran 2.0 (Cat# [TT210002]).