

Product datasheet for **RC208187**

MSRB3 (NM_001031679) Human Tagged ORF Clone

Product data:

Product Type:	Expression Plasmids
Product Name:	MSRB3 (NM_001031679) Human Tagged ORF Clone
Tag:	Myc-DDK
Symbol:	MSRB3
Synonyms:	DFNB74
Mammalian Cell Selection:	Neomycin
Vector:	pCMV6-Entry (PS100001)
E. coli Selection:	Kanamycin (25 ug/mL)
ORF Nucleotide Sequence:	>RC208187 ORF sequence Red=Cloning site Blue=ORF Green=Tags(s)

TTTTGTAATACGACTCACTATAGGGCGCCGGGAATTCGTCGACTGGATCCGGTACCGAGGAGATCTGCC
GCC**CGATCGCC**

ATGTCTGCATTCAACCTGCTGCATTTGGTGACAAAGAGCCAGCCAGTAGCCCTTCGAGCCTGTGGGCTTC
CCTCAGGGTCGTGTAGGGATAAAAAGAACTGTAAGGTGGTCTTTCCAGCAGGAACTGAGGAAGCGGCT
AACACCCCTGCAGTACCATGTCACTCAGGAGAAAGGGACCGAAAGTGCCTTTGAAGGAGAATACACACAT
CACAAAGATCCTGGAATATAAATGTGTTGTTTGTGGAAGTCCATTGTTAAGTCAGAAACCAATTTG
ACTCCGGTTCAGTTGGCCTTCATTCACGATGTGATCAATTCTGAGGCAATCACATTCACAGATGACTT
TTCTATGGGATGCACAGGGTGGAAACAAGCTGCTCTCAGTGTGGTGCTCACCTTGGGCACATTTTGTAT
GATGGGCCTCGTCCAAGTGGGAAAAGATACTGCATAAATTCGGCTGCCTTGTCTTTACACCTGCGGATA
GCAGTGGCACCGCCGAGGGAGGCAGTGGGGTCGCCAGCCCGCCAGGCAGACAAAGCGGAGCTC

ACGCGTACGCGGCCGCTCGAGCAGAACTCATCTCAGAAGAGGATCTGGCAGCAATGATATCCTGGATT
ACAAGGATGACGACGATAAGGTTTAA

Protein Sequence:	>RC208187 protein sequence Red=Cloning site Green=Tags(s)
-------------------	--

MSAFNLLHLVTKSQPVALRACGLPSGSCRDKKNCKVVFSQQELRKRLTPLQYHVTQEKGTESAFEGEYTH
HKDPGIYKCVVCGTPLFKSETKFDSSGWPSFHDVINSEAITFTDDFSYGMHRVETSCSQCGAHLGHIFD
DGPRPTGKRYCINSAALSFTPADSSGTAEGGSGVASPAQADKAEL

TRTRPLEQKLISEEDLAANDILDYKDDDDKV

Chromatograms:	https://cdn.origene.com/chromatograms/mk6347_c05.zip
----------------	---



[View online »](#)

Restriction Sites: SgfI-MluI

Cloning Scheme:



ACCN: NM_001031679

ORF Size: 555 bp

OTI Disclaimer: The molecular sequence of this clone aligns with the gene accession number as a point of reference only. However, individual transcript sequences of the same gene can differ through naturally occurring variations (e.g. polymorphisms), each with its own valid existence. This clone is substantially in agreement with the reference, but a complete review of all prevailing variants is recommended prior to use. [More info](#)

OTI Annotation: This clone was engineered to express the complete ORF with an expression tag. Expression varies depending on the nature of the gene.

Components: The ORF clone is ion-exchange column purified and shipped in a 2D barcoded Matrix tube containing 10ug of transfection-ready, dried plasmid DNA (reconstitute with 100 ul of water).

Reconstitution Method:

1. Centrifuge at 5,000xg for 5min.
2. Carefully open the tube and add 100ul of sterile water to dissolve the DNA.
3. Close the tube and incubate for 10 minutes at room temperature.
4. Briefly vortex the tube and then do a quick spin (less than 5000xg) to concentrate the liquid at the bottom.
5. Store the suspended plasmid at -20°C. The DNA is stable for at least one year from date of shipping when stored at -20°C.

RefSeq: [NM_001031679.3](#)

RefSeq Size: 4434 bp

RefSeq ORF: 558 bp

Locus ID: 253827

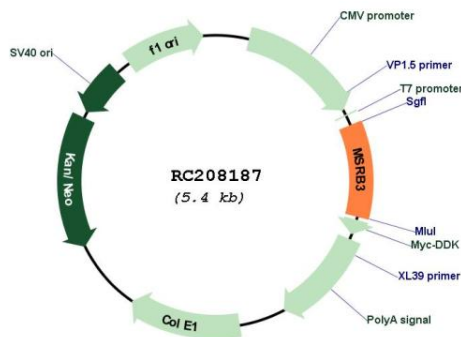
UniProt ID: [Q8IXL7](#)

Cytogenetics: 12q14.3

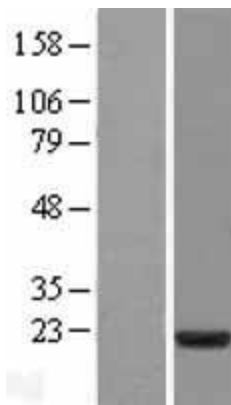
MW: 20 kDa

Gene Summary: The protein encoded by this gene catalyzes the reduction of methionine sulfoxide to methionine. This enzyme acts as a monomer and requires zinc as a cofactor. Several transcript variants encoding two different isoforms have been found for this gene. One of the isoforms localizes to mitochondria while the other localizes to endoplasmic reticula. [provided by RefSeq, Jul 2010]

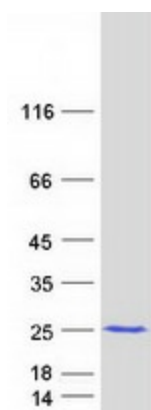
Product images:



Circular map for RC208187



Western blot validation of overexpression lysate (Cat# [LY422222]) using anti-DDK antibody (Cat# [TA50011-100]). Left: Cell lysates from untransfected HEK293T cells; Right: Cell lysates from HEK293T cells transfected with RC208187 using transfection reagent MegaTran 2.0 (Cat# [TT210002]).



Coomassie blue staining of purified MSRB3 protein (Cat# [TP308187]). The protein was produced from HEK293T cells transfected with MSRB3 cDNA clone (Cat# RC208187) using MegaTran 2.0 (Cat# [TT210002]).