

## Product datasheet for **RC208185**

### ETV6 (NM\_001987) Human Tagged ORF Clone

#### Product data:

Product Type:	Expression Plasmids
Product Name:	ETV6 (NM_001987) Human Tagged ORF Clone
Tag:	Myc-DDK
Symbol:	ETV6
Synonyms:	TEL; TEL/ABL; THC5
Mammalian Cell Selection:	Neomycin
Vector:	pCMV6-Entry (PS100001)
E. coli Selection:	Kanamycin (25 ug/mL)



[View online »](#)

**ORF Nucleotide Sequence:**

>RC208185 ORF sequence  
 Red=Cloning site Blue=ORF Green=Tags(s)

TTTTGTAATACGACTCACTATAGGGCGGCCGGAATTCGTGACTGGATCCGGTACCGAGGAGATCTGCC  
 GCC**CGGATCGCC**

ATGTCTGAGACTCCTGCTCAGTGTAGCATTAAAGCAGGAACGAATTCATATACACCTCCAGAGAGCCCAG  
 TGCCGAGTTACGCTTCCTCGACGCCACTTCATGTTCCAGTGCCTCGAGCGCTCAGGATGGAGGAAGACTC  
 GATCCGCCTGCCTGCGCACCTGCGCTTGACGCCAATTTACTGGAGCAGGGATGACGTAGCCCACTGGCTC  
 AAGTGGGCTGAAAATGAGTTTTCTTAAAGGCCAATTGACAGCAACACGTTTGAATGAATGGCAAAGCTC  
 TCCTGCTGCTGACCAAAGAGGACTTTCGCTATCGATCTCCTCATTGAGGTGATGTCTCTATGAACCTCT  
 TCAGCATATTCTGAAGCAGAGGAAACCTCGATTCTTTTTCCACCATTCTCCACCCTGGAACTCTATA  
 CACACACAGCCGGAGTCACTGCATCAGAACCATGAAGAAGATAACTGTGTCCAGAGGACCCCGAGGC  
 CATCCGTGGATAATGTGCACCATAACCCCTCCACCATTGAACTGTTGCACCGCTCCAGGTACCTATCAC  
 GACAAATCACCGCCTTCTCCTGACCCGAGCAGCGGCCCTCCGGTCCCCCTGGACAACATGATCCGC  
 CGCTCTCCCCGCTGAGAGAGCTCAGGACCCAGGCCGACCAGGAGAACCAACCAGGAGTCTTACC  
 CTCTGTGACTGTCTCCCATGGAGAATAACTGCCCAGCGTCTCCGAGTCCCACCCGAAGCCATCCAG  
 CCCCCGGCAGGAGACACGCGTGATCCAGCTGATGCCAGCCCATCATGCACCTCTGATCTGAACTC  
 CCCCAGGACTCCGTGGATTTCAAACAGTCCAGGCTCTCCGAGGACGGGCTGCATAGGGAAGGGAAGCCCA  
 TCAACCTCTCTCATCGGGAAGACCTGGCTTACATGAACCACATCATGGTCTCTGTCTCCCCGCTGAAGA  
 GCACGCCATGCCATTGGGAGAAATAGCAGACTGTAGACTGCTTTGGGATTACGTCTATCAGTTGCTTTCT  
 GACAGCCGGTACGAAAACCTCATCCGATGGGAGGACAAAGAATCCAAAATATTCCGGATAGTGGATCCCA  
 ACGGCTGGCTCGACTGTGGGAAACCATAGAACAACAACATGACCTATGAGAAAAATGTCAGAGC  
 CCTGCGCCACTACTACAACTAAACATTATCAGGAAGGAGCCAGGACAAAGGCTTTTGTTCAGGTTTATG  
 AAAACCCAGATGAAATCATGAGTGCCGAACAGACCGTCTGGAGCACCTAGAGTCCCAGGAGCTGGATG  
 AACAAATATACCAAGAAGATGAATGC

AG**CGGACCG**ACGCGTACGCGGCCGCTCGAGCAGAACTCATCTCAGAAGAGGATCTGGCAGCAAATGATATCC  
 TGGATTACAAGGATGACGACGATAAGGTTAA

**Protein Sequence:**

>RC208185 protein sequence  
 Red=Cloning site Green=Tags(s)

MSETPAQCSIKQERISYTPPEPVPSYASSTPLHVPVPRALRMEEDSIRLPAHLRLQPIYWRDDVAQWL  
 KWAENEFSLRPIDSNTFEMNGKALLLLTKEDFRYRSPHSGDVL YELLQHILKQRKPRILFSPFFHPGNSI  
 HTQPEVILHQNHEDNCVQRTPRPSVDNVHNPPTIELLHRSRSPITTNHRSPDPEQRPLRSPLDNMIR  
 RLSPAERAQGPRPHQENNHQESYPLSVSPMENNHCASSESHPKPSPPRQESTRVIQLMPSPIMHPLILN  
 PRHSVDFKQSRLEDGLHREGKPINLSHREDLAYMNHIMVSVSPPEEHAMPIGRIADCRLLDWYVYQLLS  
 DSRYENFIRWEDKESKIFRIVDPNGLARLWGNHKNRTNMTYEKMSRALRHYYKLNIIIRKEPGQRLFRFM  
 KTPDEIMSGRTDRLEHLESQELDEQIYQEDEC

**SGP**TRTRPLEQKLISEEDLAANDILDYKDDDDKV

**Chromatograms:**

[https://cdn.origene.com/chromatograms/mk6186\\_a10.zip](https://cdn.origene.com/chromatograms/mk6186_a10.zip)

**Restriction Sites:**

Sgfl-RsrII

**Cloning Scheme:**


**ACCN:** NM\_001987

**ORF Size:** 1356 bp

**OTI Disclaimer:** Due to the inherent nature of this plasmid, standard methods to replicate additional amounts of DNA in E. coli are highly likely to result in mutations and/or rearrangements. Therefore, OriGene does not guarantee the capability to replicate this plasmid DNA. Additional amounts of DNA can be purchased from OriGene with batch-specific, full-sequence verification at a reduced cost. Please contact our customer care team at [custsupport@origene.com](mailto:custsupport@origene.com) or by calling 301.340.3188 option 3 for pricing and delivery.

The molecular sequence of this clone aligns with the gene accession number as a point of reference only. However, individual transcript sequences of the same gene can differ through naturally occurring variations (e.g. polymorphisms), each with its own valid existence. This clone is substantially in agreement with the reference, but a complete review of all prevailing variants is recommended prior to use. [More info](#)

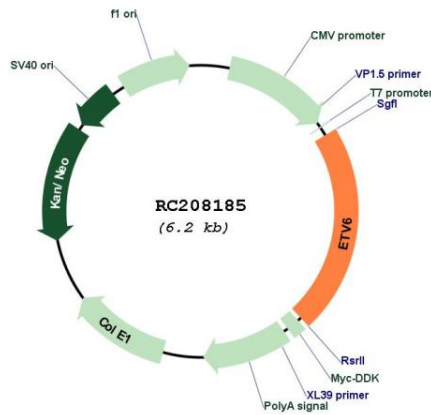
**OTI Annotation:** This clone was engineered to express the complete ORF with an expression tag. Expression varies depending on the nature of the gene.

**Components:** The ORF clone is ion-exchange column purified and shipped in a 2D barcoded Matrix tube containing 10ug of transfection-ready, dried plasmid DNA (reconstitute with 100 ul of water).

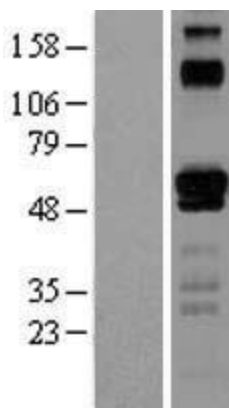
- Reconstitution Method:**
1. Centrifuge at 5,000xg for 5min.
  2. Carefully open the tube and add 100ul of sterile water to dissolve the DNA.
  3. Close the tube and incubate for 10 minutes at room temperature.
  4. Briefly vortex the tube and then do a quick spin (less than 5000xg) to concentrate the liquid at the bottom.
  5. Store the suspended plasmid at -20°C. The DNA is stable for at least one year from date of shipping when stored at -20°C.

<b>Note:</b>	Plasmids are not sterile. For experiments where strict sterility is required, filtration with 0.22um filter is required.
<b>RefSeq:</b>	<a href="#">NM_001987.5</a>
<b>RefSeq Size:</b>	5989 bp
<b>RefSeq ORF:</b>	1359 bp
<b>Locus ID:</b>	2120
<b>UniProt ID:</b>	<a href="#">P41212</a>
<b>Cytogenetics:</b>	12p13.2
<b>Domains:</b>	ETS, SAM_PNT
<b>Protein Families:</b>	Druggable Genome, Transcription Factors
<b>Protein Pathways:</b>	Dorso-ventral axis formation
<b>MW:</b>	53 kDa
<b>Gene Summary:</b>	This gene encodes an ETS family transcription factor. The product of this gene contains two functional domains: a N-terminal pointed (PNT) domain that is involved in protein-protein interactions with itself and other proteins, and a C-terminal DNA-binding domain. Gene knockout studies in mice suggest that it is required for hematopoiesis and maintenance of the developing vascular network. This gene is known to be involved in a large number of chromosomal rearrangements associated with leukemia and congenital fibrosarcoma. [provided by RefSeq, Sep 2008]

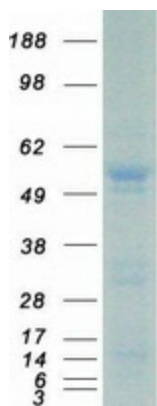
### Product images:



Circular map for RC208185



Western blot validation of overexpression lysate (Cat# [LY400728]) using anti-DDK antibody (Cat# [TA50011-100]). Left: Cell lysates from untransfected HEK293T cells; Right: Cell lysates from HEK293T cells transfected with RC208185 using transfection reagent MegaTran 2.0 (Cat# [TT210002]).



Coomassie blue staining of purified ETV6 protein (Cat# [TP308185]). The protein was produced from HEK293T cells transfected with ETV6 cDNA clone (Cat# RC208185) using MegaTran 2.0 (Cat# [TT210002]).