

Product datasheet for **RC208183**

SYT9 (NM_175733) Human Tagged ORF Clone

Product data:

Product Type:	Expression Plasmids
Product Name:	SYT9 (NM_175733) Human Tagged ORF Clone
Tag:	Myc-DDK
Symbol:	SYT9
Mammalian Cell Selection:	Neomycin
Vector:	pCMV6-Entry (PS100001)
E. coli Selection:	Kanamycin (25 ug/mL)



[View online »](#)

ORF Nucleotide Sequence:

>RC208183 ORF sequence
 Red=Cloning site Blue=ORF Green=Tags(s)

TTTTGTAATACGACTCACTATAGGGCGGCCGGGAATTCGTCGACTGGATCCGGTACCGAGGAGATCTGCC
 GCC**CGGATCGCC**

ATGCCCGGGCCAGGGACGCGCTGTGCACCAGGCGCTGCAGCTGCTGGCCGAGCTCTGTGCCCGTGGG
 CCCTGGAGCACGACAGCTGCCAGGATTTCAATTTACCACCTGCGGGACCGTGCCAGACCCCGCTCCGCGA
 CCCAGATATCTCAGTGAGCCTGTGACCCTTGTGGTCACTGCCTGTGGTCTCGCTCTCTTTGGCGTGTCT
 CTCTTCGTATCTTGAAACTCTGCTGGGTTCCGTGGCAGAACGAGGCCTGCCCTCTGGTAGCAAAGACA
 ACAACCAGGAGCCCTTAACTACATGGACACAGAGACCAATGAGCAGGAGAACAGTGAGGACTTCTAGA
 CCCTCCCACGCCCTGCCCTGACTCCTCCATGAAGATCAGCCACACCTCCCCTGACATCCCCTCTCCACC
 CAGACGGGATCCAGGAGAACTGTGCCATGGCGTCCGCGTGCAGCGCAAGTACAGAGCCAACCTCGT
 CGGCCCGGCATAATTCAATCCGAAGACAACCACTTGTCAAACCCGGACTTCAATATCCAGCAGCTTCA
 AAAACAGGAACAGTTGACTGGAATTGGTAGAATTAACCAGAGTTATATAAGCAGAGGTCATTGGATAAT
 GATGACGGGAGACGGAGTAACAGCAAGGCTTGTGGGAACTGAATTCATTTTAAAAATGACTGTGACT
 TAGAGCAGCTCATAGTGAAGATTCACAAAGCTGTCAATTTGCCCGCCAAGGACTTTTCTGGGACTTCAGA
 TCCTTATGTCAAGATCTATTTGCTTCTGATCGGAAAACAAAACACCAGACTAAAGTTACAGAAAAGACC
 CTGAACCTGTGTTTGTGAAGTGTATTTATTTCCGGTTCCTACAATGACCTTGAAGCACGGAAGCTTC
 ACTTCTCTGTGTACGACTTTGACAGGTTCTCTCGTCATGACTTAATCGGCCAAGTGGTGGTGGATCACTT
 CCTAGACTTGGCTGATTTCCCAGGGAGTGCATCCTTTGGAAGGATATCGAATATGTCACCAATGACAAC
 GTGGATCTGGGAGAGCTGATGTTTTCCCTGTGCTATCTTCCAACGGCTGGCAGGCTGACCATTACCATTA
 TAAAAGCAAGGAATTTAAAGGCAATGGACATAACAGGAGCATCAGATCCCTATGTGAAAGTCTCGTGT
 GTGTGATGGCAGACGACTGAAGAAGAGGAAAACATCCACCAAGAGGAACACCTTGAATCCTGTTTACAAC
 GAAGCCATAGTCTTTGATGTCCCTCCCAGAACATTGACCAAATCCACTTGTCCATAGCAGTCATGGACT
 ATGACCGTGTAGGTCACAATGAGATCATCGGCGTGTGCAAGTAGGCAACGAGGCTGAGAGGCTGGGCAG
 AGACCACTGGAGTGAAATGTTGTCATATCCTCGGAAGCCATTGCACACTGGCATTCCCTGGTGGAGAAA
 CGA

ACGCGTACGCGGCCGCTCGAGCAGAAACTCATCTCAGAAGAGGATCTGGCAGCAAATGATATCCTGGATT
 ACAAGGATGACGACGATAAAGTTTAA

Protein Sequence:

>RC208183 protein sequence
 Red=Cloning site Green=Tags(s)

MPGARDALCHQALQLLAELCARGALEHDSQDFIYHLRDRARPRLRDPDISVSLTLVVTACGLALFGVS
 LFVSWKLCWVPWRERGLPSGSKDNNQEPLNYMDTETNEQENSEDFLDPPTPCPDSSMKISHTSPDIPLST
 QTGIQENCAHGVRVQRQVTEPTSSARHNSIRRQLNLSNPDFNIQQLQKQEQLTGIGRIKPELYKQSLDN
 DDGRRSNSKACGKLNFIKLYDCDLEQLIVKIHKAVNLPKDFSGTSDPYVKIYLLPDRKTKHQTKVHRKT
 LNPVFDEVFLFPVPYNDLEARKLHFSVYDFDRFSRHDLIGQVVVDHFLDLADFPRECILWKDIEYVNDN
 VDLGELMFSLCYLPTAGRLTITIIKARNLKAMDITGASDPYVKVSLMCDGRRLKRRKTSTKRNTLNPVYN
 EAVIFDVPENIDQIHLISIAVMDYDRVGHNEIIGVCQVGNEAERLGRDHWSEMLSYPKPKIAHWSLVEK
 R

TRTRPLEQKLISEEDLAANDILDYKDDDDKV

Chromatograms:

https://cdn.origene.com/chromatograms/mk6351_g11.zip

Restriction Sites:

SgfI-MluI

Cloning Scheme:


ACCN: NM_175733

ORF Size: 1473 bp

OTI Disclaimer: The molecular sequence of this clone aligns with the gene accession number as a point of reference only. However, individual transcript sequences of the same gene can differ through naturally occurring variations (e.g. polymorphisms), each with its own valid existence. This clone is substantially in agreement with the reference, but a complete review of all prevailing variants is recommended prior to use. [More info](#)

OTI Annotation: This clone was engineered to express the complete ORF with an expression tag. Expression varies depending on the nature of the gene.

Components: The ORF clone is ion-exchange column purified and shipped in a 2D barcoded Matrix tube containing 10ug of transfection-ready, dried plasmid DNA (reconstitute with 100 ul of water).

Reconstitution Method:

1. Centrifuge at 5,000xg for 5min.
2. Carefully open the tube and add 100ul of sterile water to dissolve the DNA.
3. Close the tube and incubate for 10 minutes at room temperature.
4. Briefly vortex the tube and then do a quick spin (less than 5000xg) to concentrate the liquid at the bottom.
5. Store the suspended plasmid at -20°C. The DNA is stable for at least one year from date of shipping when stored at -20°C.

RefSeq: [NM_175733.3](#)

RefSeq Size: 3958 bp

RefSeq ORF: 1476 bp

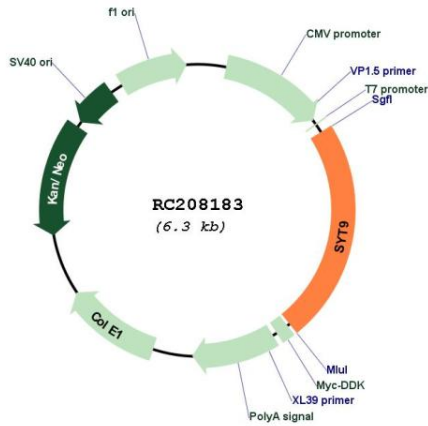
Locus ID: 143425

UniProt ID: [Q86SS6](#)

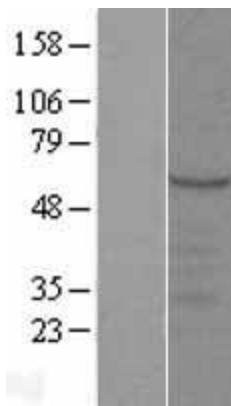
Cytogenetics: 11p15.4

Protein Families: Secreted Protein, Transmembrane
MW: 56.2 kDa
Gene Summary: May be involved in Ca(2+)-dependent exocytosis of secretory vesicles through Ca(2+) and phospholipid binding to the C2 domain or may serve as Ca(2+) sensors in the process of vesicular trafficking and exocytosis.[UniProtKB/Swiss-Prot Function]

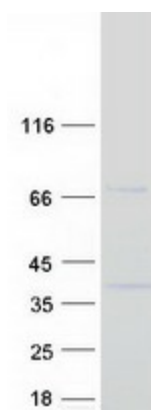
Product images:



Circular map for RC208183



Western blot validation of overexpression lysate (Cat# [LY406245]) using anti-DDK antibody (Cat# [TA50011-100]). Left: Cell lysates from untransfected HEK293T cells; Right: Cell lysates from HEK293T cells transfected with RC208183 using transfection reagent MegaTran 2.0 (Cat# [TT210002]).



Coomassie blue staining of purified SYT9 protein (Cat# [TP308183]). The protein was produced from HEK293T cells transfected with SYT9 cDNA clone (Cat# RC208183) using MegaTran 2.0 (Cat# [TT210002]).