

Product datasheet for **RC208180**

TMEM200A (NM_052913) Human Tagged ORF Clone

Product data:

Product Type:	Expression Plasmids
Product Name:	TMEM200A (NM_052913) Human Tagged ORF Clone
Tag:	Myc-DDK
Symbol:	TMEM200A
Synonyms:	KIAA1913; TTMA; TTMC
Mammalian Cell Selection:	Neomycin
Vector:	pCMV6-Entry (PS100001)
E. coli Selection:	Kanamycin (25 ug/mL)



[View online »](#)

ORF Nucleotide Sequence:

>RC208180 ORF sequence
 Red=Cloning site Blue=ORF Green=Tags(s)

TTTTGTAATACGACTCACTATAGGGCGGCCGGAATTCGTCGACTGGATCCGGTACCGAGGAGATCTGCC
 GCC**GCGATCGCC**

ATGATAGCAACTGGTGGAGTGATAACTGGCCTGGCCGCTTGAAAAGCCAAGACTCTGCCAGATCACAGC
 AGCATGTCAACCTCAGCCGCTCCTGCTACCCAAGAGAAGAAGCCATCAGGCGCCGGCCCGGGCAGA
 TGTTGTGGTTGTTCTGCGGCAAAATCCGGCTTTATTCCCCATCTGGTTTTTTTTCTATTTTAGGAGTGCTC
 ATCTCCATTATAGGAATTGCCATGGCCGTTCTTGGATATTGGCCCCAAAAAGAACATTTTATTGATGCTG
 AAACAACACTGTCAACAAATGAACTCAGGTCAATCGAATGAAGGCGGTGTGGTGGTTCGCTTCTTTGA
 GCAGCATTGCAATCTGATAAGATGAAATGCTTGGCCGTTCCCATGGGGATTGGCATTTTCATTTTC
 ATTTGTGCTAATGCCATTCTTCATGAAAACCGTGACAAAGAGACCAAAATCATACACATGAGGGATATCT
 ATCCACAGTCATTGACATTCACACGCTAAGAATCAAGGAGCAAAGGCAAATGAACGGCATGTACTCTGG
 TTTGATGGGAGAAACAGAAGTAAACAGAATGGGAGCTCCTGTGCCTCGAGATTGGCAGCAAATACGATC
 GCCTCTTTCTCGGTTTTTCGGAGCAGTTTTCGAATGGACAGCTCCGTGGAGGAGGATGAACCTATGTTAA
 ATGAAGGTAAGAGTTCTGGGCATCTTATGCCCCCTTTGCTCTCTGACAGCTCTGTGTCTGTCTTTGGCCT
 CTATCCACCTCCTTCCAAGACAACCTGATGATAAGACCAGCGGCTTAAGAAATGTGAAACCAAGTCAATT
 GTGTCACTCGTCCATCAGTGCTTTTACATTGCTGTGATCAAACCTAATAACTGTGTTATTGATGAGCCCA
 GTATAGATAACATCACTGAAGATGCTGACAACCTCAAAGTAGGTCAAGGAATTTGTCAATGGATTCCCT
 TGTGGTTCCTTTGCCAACACCAAGTGAATCCTCCAGCCCGTCAGCACAGTGCTACCAAGGAATAATTCC
 ATTTGGGAGTCGTTGTCGAGTCAGTACAAGTCATCTATGGCTCTCGGACCTGGGGCTGGACAGCTCTTGT
 CTCTGGGGCTGCCAGAAGACAGTTTGGGTCCAATACATCCTTGCATTTGCTCTCGTCAACTCAAAGTC
 CTTGGACTTAGACCGGGTCCCTCCACTCTAACTGTTTCAGGCAGAAACGGAACATCCAAGTTGGCCT
 AGGTTGGATCGGAACAACAGCAAGGATATATGAACTAGAGAACAAGAACCCGATGGATAGGTTGC
 TTGTGCCCAAGTTGCCATCAAAAAGGACTTTACCAATAAGGAGAAGCTTCTTATGATTTCAAGATCTCA
 CAATAATTTGAGTTTTGAACATGATGAGTTTTTGAGTAACAACCTAAAGAGGGGAACCTCTGAAACAAGG
 TTT

ACGCGTACGCGGCCGCTCGAGCAGAAACTCATCTCAGAAGAGGATCTGGCAGCAAATGATATCTGGATT
 ACAAGGATGACGACGATAAGGTTTAA

Protein Sequence:

>RC208180 protein sequence
 Red=Cloning site Green=Tags(s)

MIATGGVITGLAALKRQDSARSQQHVNLSPPATQEKKPIRRRPRADVVRGKIRLYSPSGFFLILGVL
 ISIIIGIAMAVLGYWPQKEHFIDAETTLSTNETQVIRNEGGVVVRFQHLHSDKMKMLGPFTMGIGIFIF
 ICANAILHENRDKETKIIHMRDIYSTVIDIHLRIKEQRQMNGMYTGLMGETEVKQNGSSCASRLAANTI
 ASFSGFRSSFRMDSSVEEDELMLNEGKSSGHLMPPLLSDSSVSVFGLYPPPSKTTDDKTSGSKKCEKTSI
 VSSSISAFPLPVIKLNNCVIDEPSIDNITEDADNLKSRSRNLSMDSL VVPLPNTSESFQPVSTVLPNNNS
 IGESLSSQYKSSMALGPGAGQLLSPGAARRQFGSNTSLHLLSSHKSLDLDRGPSTLTVQAEQRKHPSPW
 RLDNRNSKGYMKLENKEDPMDRLLVPQVAIKKDFTNKEKLLMISRSHNNLSFEHDEFLLNNLKRGTSETR
 F

TRTRPLEQKLI SEEDLAANDILDYKDDDDKV

Chromatograms:

https://cdn.origene.com/chromatograms/mk6093_f09.zip

Restriction Sites:

Sgfl-Mlul

Cloning Scheme:


ACCN: NM_052913

ORF Size: 1473 bp

OTI Disclaimer: The molecular sequence of this clone aligns with the gene accession number as a point of reference only. However, individual transcript sequences of the same gene can differ through naturally occurring variations (e.g. polymorphisms), each with its own valid existence. This clone is substantially in agreement with the reference, but a complete review of all prevailing variants is recommended prior to use. [More info](#)

OTI Annotation: This clone was engineered to express the complete ORF with an expression tag. Expression varies depending on the nature of the gene.

Components: The ORF clone is ion-exchange column purified and shipped in a 2D barcoded Matrix tube containing 10ug of transfection-ready, dried plasmid DNA (reconstitute with 100 ul of water).

- Reconstitution Method:**
1. Centrifuge at 5,000xg for 5min.
 2. Carefully open the tube and add 100ul of sterile water to dissolve the DNA.
 3. Close the tube and incubate for 10 minutes at room temperature.
 4. Briefly vortex the tube and then do a quick spin (less than 5000xg) to concentrate the liquid at the bottom.
 5. Store the suspended plasmid at -20°C. The DNA is stable for at least one year from date of shipping when stored at -20°C.

RefSeq: [NM_052913.1](#)

RefSeq Size: 5042 bp

RefSeq ORF: 1476 bp

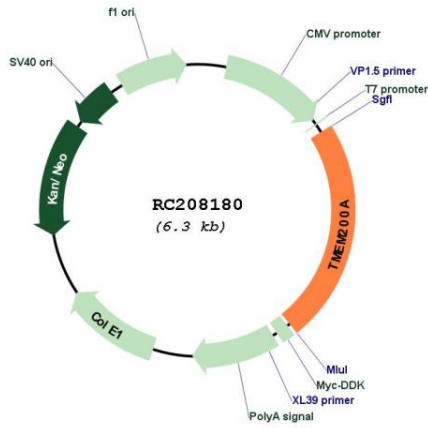
Locus ID: 114801

UniProt ID: [Q86VY9](#)

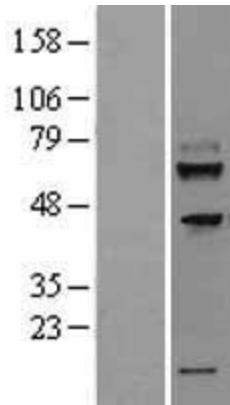
Cytogenetics: 6q23.1

Protein Families: Transmembrane
 MW: 54.4 kDa

Product images:



Circular map for RC208180



Western blot validation of overexpression lysate (Cat# [LY403269]) using anti-DDK antibody (Cat# [TA50011-100]). Left: Cell lysates from untransfected HEK293T cells; Right: Cell lysates from HEK293T cells transfected with RC208180 using transfection reagent MegaTran 2.0 (Cat# [TT210002]).