

Product datasheet for **RC208178**

SLC6A18 (NM_182632) Human Tagged ORF Clone

Product data:

Product Type:	Expression Plasmids
Product Name:	SLC6A18 (NM_182632) Human Tagged ORF Clone
Tag:	Myc-DDK
Symbol:	SLC6A18
Synonyms:	Xtrp2
Mammalian Cell Selection:	Neomycin
Vector:	pCMV6-Entry (PS100001)
E. coli Selection:	Kanamycin (25 ug/mL)



[View online »](#)

ORF Nucleotide Sequence:

>RC208178 representing NM_182632.
 Blue=ORF Red=Cloning site Green=Tag(s)

```
GCTCGTTTAGTGAACCGTCAGAATTTTGTAAACGACTCACTATAGGGCGGCCGGGAATTCGTGACTG
GATCCGGTACCGAGGAGATCTGCCGCCGCGATCGCC
ATGGCTCATGCCCAGAACCCGACCCGGCCGCCTGCGACCTCGGGATGAGAGGCCCAAGTGGGACAAC
AAGGCCAGTACCTCCTGAGCTGCACTGGGTTTCCCGTGGGACTGGGGAACATTTGGCGTTCCCATAC
CTGTGCCAGACCTATGGAGGAGGGCCTTCTCATCCCCTACGTATCGCGCTGGTCTTCGAGGGGATC
CCCATTTTCCACGTCGAGCTCGCCATCGGCCAGCGGCTGCGGAAGGGCAGCGTCGGCGTGTGGACGGCC
ATCTCCCCGTACCTCAGTGGAGTAGGGCTGGGCTGTGTACGCTGTCTTCTGATCAGCCTGTACTAC
AACACCATCGTGGCGTGGGTGCTGTGGTACCTCCTCAACTCCTTCCAGCACCCGCTGCCCTGGAGCTCC
TGCCACCCGACCTCAACAGAACAGGGTTTGTGGAGGAGTGCCAGGGCAGCAGCGCCGTGAGCTACTTC
TGGTACCGGCAGACTGAACATCACAGCCGACATCAATGACAGTGGCTCCATCCAGTGGTGGCTGCTC
ATCTGCTTGGCAGCCTCCTGGGAGTGTGTACATGTGTGTATCAGGGCATTGAGACTACAGGGAAG
GTGATTTACTTACAGCTTTGTTCCCTTACCTGGTCTGACCATCTTCTCATCAGAGGGCTGACCTG
CCAGGGGCAACAAAAGGACTCATCTACTTGTTCCTCCCAACATGCACATTTCTCCAGAACCCCCGGGTG
TGCTGGACGCAGCCACCCAGATATTCTTCTCTGTCCCTGGCCTTCGGAGGACACATCGCTTTTGA
AGTTAAACTCGCCAGGAATGACTGCCAGAAGGATGCGGTGGTATCGCCCTGGTCAACAGGATGACC
TCCCTGTACGCGTCCATCGCTGTCTTCTGTCTGGGTTCAAAGCAACTAATGACTACGAGCACTGC
CTGGACAGAAACATCCTCAGCCTCATCAACGACTTTGACTTCCCAGAGCAGAGCATCTCCAGGGACGAC
TACCCAGCCGCTCATGCACCTGAACGCCACCTGGCCCAAGAGGGTGGCCAGCTCCCCCTGAAGGCC
TGCTCCTGGAAGACTTTCTGGATAAGAGTGCCTCGGGCCCGGCTGGCCTTCGTCTTACAGGAG
ACCGACTCCACATGCCGGGGCTCCTGTGTGGCCATGCTCTTCTTCGGGATGCTGTTCACCTTGGGG
CTATCGACCATGTTTCGGGACCGTGGAGGGTGCATCACACCCCTGCTGGAGCTGGGGTCCCTGCCTAGA
TGGGTCCCAAGGAGGCCCTGACTGGGCTGGTCTGCCTGGTCTGCTTCTCTCCGCCACCTGCTTACG
CTGCAGCTGGAACTACTGGCTGGAGATTTTCGACAATTTTGGCGTTCGCCGAACCTGCTCATGTTG
GCCTTTCTCGAGGTTGTGGGTGTCGTTTATGTTTATGGAATGAAACGGTTCTGCGATGACATTGCGTGG
ATGACCGGGAGGCGGCCAGCCCTACTGGCGGCTGACCTGGAGGGTGGTCACTCCCTGCTGCTGACC
ATCTTTGTGGCTTACATCATCTCCTGTCTGGAAGCCACTGAGATAAAGCCGGAACCCCAAATAC
GAGCTGTTCCCTCGCGTCAAGAGAAGCTTACCCGGGCTGGGCGCGCCGCTGTGTGCTGCTGTCC
TTGCTGCCGTGTGTGGTCCCGTGGCCGCGCTTGTCTAGCTGCTCACCCGGGAGGGCGGACGTGG
AGGGACAGGGACGCGGCCAGACACGGACATGCCCCGGACACGGACACGCGCCAGACACGGACATG
CGCCCGGACACGGACATGCGC
AGCGGACCGACGCGTACGCGGCCGCTCGAGCAGAACTCATCTCAGAAGAGGATCTGGCAGCAAATGAT
ATCCTGGATTACAAGGATGACGACGATAAGGTTTAA
```

Protein Sequence:

>Peptide sequence encoded by RC208178
 Blue=ORF Red=Cloning site Green=Tag(s)

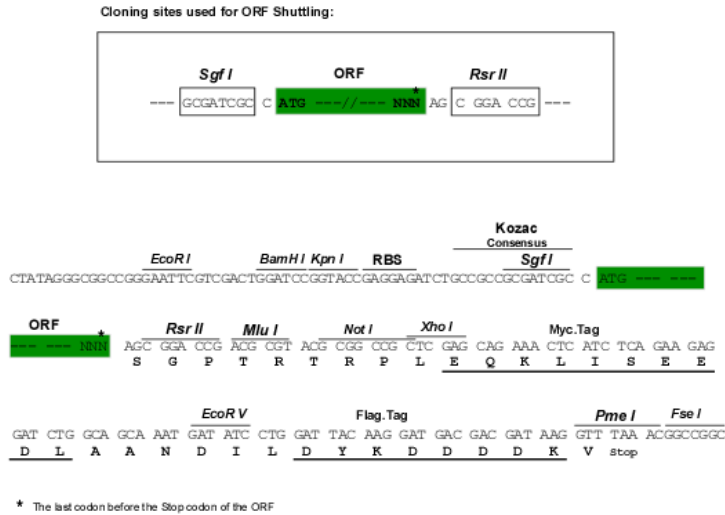
```
MAHAPEPDAACDLGDERPKWDNKAQYLLSCTGFVAVGLGNIWRFPYLCQTYGGGAFLIPYVIALVFEGI
PIFHVELAIGQRLRKGSVGVWTAISPYLSVGLGCVTL SFLISLYNTIVAWWLWYLLNSFQHPLPSS
CPPDLNRTGFVEECQSSAVSYFYRQTLNITADINDSGSIQWLLICLAASWAVVYMCVIRGIETTK
VIYFTALFPYLVTIFLIRGLTLPGATGLIYLFIPNMHILQNPVWLDAAATQIFFSLSLAFGGHIAFA
SYNSPRNDCQKDAVVIALVNRMTSLYASIAVFSVLGFKATNDYEHCLDRNLSLINDFDPEQISRDD
YPAVLMHLNATWPKRVAQLPLKACLEDFLDKSASGGLAFVVF TETDLHMPGAPVWAMLFFGMLFTLG
LSTMFGTVEAVITPLLDVGLPRWVPKEALTGLVCLVFLSATCF TLQSGNYWLEIFDNFAASPILLML
AFLEVGVVYVYGMKRFDDIAWMTGRRSPYWRLTWRVVSPLLLTIFVAYIILLFWKPLRYKAWNPKY
ELFPSRQEKLYPGWARAACVLLSLLPVLWVVAALQLL TRRRRTWRDRDARPDTPDRPDTDM
RPDTPDR
SGPTRTRPLEQKLISEEDLAANDILDYKDDDDKV
```

Chromatograms:

https://cdn.origene.com/chromatograms/mk6620_b10.zip

Restriction Sites: SgfI-RsrII

Cloning Scheme:



ACCN: NM_182632

ORF Size: 1884 bp

OTI Disclaimer: The molecular sequence of this clone aligns with the gene accession number as a point of reference only. However, individual transcript sequences of the same gene can differ through naturally occurring variations (e.g. polymorphisms), each with its own valid existence. This clone is substantially in agreement with the reference, but a complete review of all prevailing variants is recommended prior to use. [More info](#)

OTI Annotation: This clone was engineered to express the complete ORF with an expression tag. Expression varies depending on the nature of the gene.

Components: The ORF clone is ion-exchange column purified and shipped in a 2D barcoded Matrix tube containing 10ug of transfection-ready, dried plasmid DNA (reconstitute with 100 ul of water).

Reconstitution Method:

1. Centrifuge at 5,000xg for 5min.
2. Carefully open the tube and add 100ul of sterile water to dissolve the DNA.
3. Close the tube and incubate for 10 minutes at room temperature.
4. Briefly vortex the tube and then do a quick spin (less than 5000xg) to concentrate the liquid at the bottom.
5. Store the suspended plasmid at -20°C. The DNA is stable for at least one year from date of shipping when stored at -20°C.

RefSeq: [NM_182632.3](#)

RefSeq Size: 2141 bp

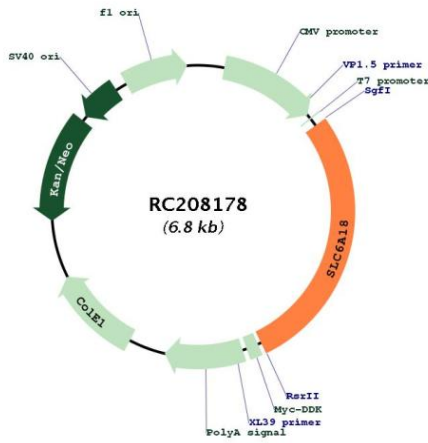
RefSeq ORF: 1887 bp

Locus ID: 348932

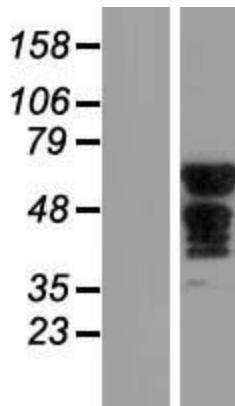
UniProt ID: [Q96N87](#)
 Cytogenetics: 5p15.33
 Protein Families: Druggable Genome, Transmembrane
 MW: 70.9 kDa

Gene Summary: The SLC6 family of proteins, which includes SLC6A18, act as specific transporters for neurotransmitters, amino acids, and osmolytes like betaine, taurine, and creatine. SLC6 proteins are sodium cotransporters that derive the energy for solute transport from the electrochemical gradient for sodium ions (Hoglund et al., 2005 [PubMed 16125675]).[supplied by OMIM, Apr 2010]

Product images:



Circular map for RC208178



Western blot validation of overexpression lysate (Cat# [LY405405]) using anti-DDK antibody (Cat# [TA50011-100]). Left: Cell lysates from untransfected HEK293T cells; Right: Cell lysates from HEK293T cells transfected with RC208178 using transfection reagent MegaTran 2.0 (Cat# [TT210002]).