

Product datasheet for **RC208173**

RNF36 (TRIM69) (NM_182985) Human Tagged ORF Clone

Product data:

Product Type:	Expression Plasmids
Product Name:	RNF36 (TRIM69) (NM_182985) Human Tagged ORF Clone
Tag:	Myc-DDK
Symbol:	RNF36
Synonyms:	HSD-34; HSD34; RNF36; Trif
Mammalian Cell Selection:	Neomycin
Vector:	pCMV6-Entry (PS100001)
E. coli Selection:	Kanamycin (25 ug/mL)



[View online »](#)

ORF Nucleotide Sequence:

>RC208173 representing NM_182985
 Red=Cloning site Blue=ORF Green=Tags(s)

TTTTGTAATACGACTCACTATAGGGCGGCCGGAATTCGTCGACTGGATCCGGTACCGAGGAGATCTGCC
 GCC**GCGATCGCC**

ATGGAGGTATCCACCAACCCCTCCTCCAACATCGATCCAGGCGACTATGTTGAAATGAATGATTCAATCA
 CCCACCTACCCTCTAAAGTGGTGATACAAGATATTACTATGGAGCTACACTGCCCTCTGTCAATGATTG
 GTTCCGAGACCCACTGATGCTAAGCTGTGGCCACAACCTCTGTGAAGCCTGTATCCAAGACTTTTGGAGG
 CTGCAAGCAAAGGAAACATTCTGTCTGAGTGTAAGATGCTATGTCAGTATAACAACTGTACATTCAACC
 CTGTACTGGACAAGTTGGTAGAGAAGATTAAGAAGTTACCCTTACTCAAGGGCCATCCACAGTGCCCAGA
 GCATGGAGAGAACCTGAAACTGTTCAAGTAAACCAGATGGGAACTGATCTGCTTTCAATGCAAGGATGCT
 CGGTTGTCTGTGGGCAGTCTAAGGAGTTCCTGCAAATCTCTGATGCTGTCCATTTCTTCACGGAGGAGC
 TTGCCATCCAACAGGGTCAACTGGAGACAACCTGAAGGAGCTTCAAGCCCTGAGGAACATGCAGAAGGA
 AGCTATTGCTGCTCACAAGGAAAACAAGCTACATCTGCAGCAACATGTGTCCATGGAGTTTCTAAAGCTG
 CATCAGTTCCTGCACAGCAAAGAAAAGGACATTTAACTGAGCTCCGGGAAGAGGGGAAAGCCTTGAATG
 AGGAGATGGAGTTGAATCTGAGCCAGCTTCAGGAGCAATGTCTCTTAGCCAAGGATATGTTGGTGAGCAT
 TCAGGCAAAGACGGAACAACAGAACCTCTTCGACTTTCTCAAAGACATCACAACTCTTTACATAGCTTG
 GAGCAAGGAATGAAGGTGCTGGCAACCAGAGAGCTTATTTCCAGAAAGCTGAACCTGGGCCAGTACAAA
 GTCCTATCCAGTACATGGTATGGAGGAAAATGCAGGACTCTCTGCCAGGCCTGTCTCCACTAACTCT
 GGACCCTAAAACAGCTCACCCAAATCTGGTGCTCTCCAAAAGCCAAACCAGCGTCTGGCATGGTGACATT
 AAGAAGATAATGCCTGATGATCCTGAGAGGTTTGACTCAAGTGTGGCTGTACTGGGCTCAAGAGGCTTCA
 CCTCTGGAAAGTGGTACTGGGAAGTAAAGTAAAGTAAAGTAAAGTAAAGTAAAGTAAAGTAAAGTAAAGT
 ATCCATCATTTCGGAAGGGCAGCTGTCTAACTCCTGAGCAAGGATTCTGGCTTTTAAAGACTAAGGAAC
 CAAACTGATCTAAAGGCTCTGGATTTGCCTTTCTTCAGTCTGACTGACTAACAACCTCGACAAGTGG
 GCATATACCTGGATTATGAAGGAGGACAGTTGTCTTCTACAATGCTAAAACCATGACTCACATTTACAC
 CTTTCAGTAACTTTTCATGGAGAACTTTATCCCTACTTCTGCCCTGCCTTAATGATGGTGGAGAGAAT
 AAAGAACCATTGCACATTTACATCCACAG

ACGCGTACGCGGCCGCTCGAGCAGAAACTCATCTCAGAAGAGGATCTGGCAGCAAATGATATCCTGGATT
 ACAAGGATGACGACGATAAGGTTTAA

Protein Sequence:

>RC208173 representing NM_182985
 Red=Cloning site Green=Tags(s)

MEVSTNPSSNIDPGDYVEMNDSITHLPSKVVIQDITMELHCPLCNDWFRDPLMLSCGHNFCEACIQDFWR
 LQAKETFCECKMLCQYNNCTFNPVLDKLVKIKKLLPLKQHPQCEHGENLKLFSKPDGKLI CFQCKDA
 RLSVGQSKEFLQISDAVHFFTEELAIQQGQLETTKELQTLRNMQKEIAAHKENKLHLQQHVSMEFLKL
 HQFLHSKEKDILTELREEGKALNEEMELNLSLQEQCLLAKDMLVSIQAKTEQQNSFDFLKDITLLHSL
 EQGMKVLATRELI SRKLNLGQYKGIQYMWREMQDTPGLSPLTLDPKTAHPNLVLSKSQTSVWHGDI
 KKIMPDDPERFDSSAVLGSRGFTSGKWYWEVEVAKTKWTVGVVRESIRKGSCLPTPEQGFLLRLRN
 QTDLKDLPSPSLTLNNLDKVGIYLDYEGGQLSFYNAKTMTHIYTFNTFMEKLYPYFCPLNDGGEN
 KEPLHILHPQ

TRTRPLEQKLISEEDLAANDILDYKDDDDKV

Chromatograms:

https://cdn.origene.com/chromatograms/ja1624_f07.zip

Restriction Sites:

Sgfl-Mlul

Cloning Scheme:


ACCN: NM_182985

ORF Size: 1500 bp

OTI Disclaimer: The molecular sequence of this clone aligns with the gene accession number as a point of reference only. However, individual transcript sequences of the same gene can differ through naturally occurring variations (e.g. polymorphisms), each with its own valid existence. This clone is substantially in agreement with the reference, but a complete review of all prevailing variants is recommended prior to use. [More info](#)

OTI Annotation: This clone was engineered to express the complete ORF with an expression tag. Expression varies depending on the nature of the gene.

Components: The ORF clone is ion-exchange column purified and shipped in a 2D barcoded Matrix tube containing 10ug of transfection-ready, dried plasmid DNA (reconstitute with 100 ul of water).

Reconstitution Method:

1. Centrifuge at 5,000xg for 5min.
2. Carefully open the tube and add 100ul of sterile water to dissolve the DNA.
3. Close the tube and incubate for 10 minutes at room temperature.
4. Briefly vortex the tube and then do a quick spin (less than 5000xg) to concentrate the liquid at the bottom.
5. Store the suspended plasmid at -20°C. The DNA is stable for at least one year from date of shipping when stored at -20°C.

RefSeq: [NM_182985.5](#)

RefSeq Size: 1911 bp

RefSeq ORF: 1503 bp

Locus ID: 140691

UniProt ID: [Q86WT6](#)

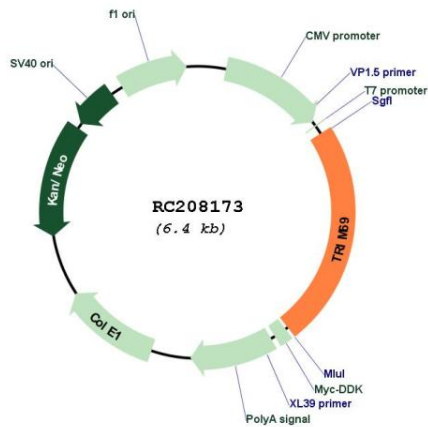
Cytogenetics: 15q21.1

Protein Families: Druggable Genome

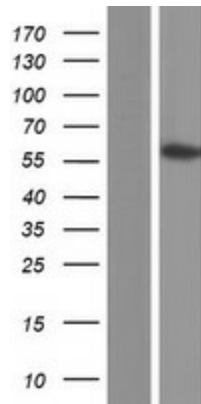
MW: 57.2 kDa

Gene Summary: This gene encodes a member of the RING-B-box-coiled-coil (RBCC) family and encodes a protein with an N-terminal RING finger motif, a PRY domain and a C-terminal SPRY domain. The mouse ortholog of this gene is specifically expressed in germ cells at the round spermatid stages during spermatogenesis and, when overexpressed, induces apoptosis. Alternatively spliced transcript variants encoding distinct isoforms have been described. [provided by RefSeq, Jul 2008]

Product images:



Circular map for RC208173



Western blot validation of overexpression lysate (Cat# [LY405299]) using anti-DDK antibody (Cat# [TA50011-100]). Left: Cell lysates from untransfected HEK293T cells; Right: Cell lysates from HEK293T cells transfected with RC208173 using transfection reagent MegaTran 2.0 (Cat# [TT210002]).