

Product datasheet for RC208167

GIMAP1 (NM_130759) Human Tagged ORF Clone

Product data:

Product Type:	Expression Plasmids
Product Name:	GIMAP1 (NM_130759) Human Tagged ORF Clone
Tag:	Myc-DDK
Symbol:	GIMAP1
Synonyms:	HIMAP1; IAN2; IMAP1; IMAP38
Mammalian Cell Selection:	Neomycin
Vector:	pCMV6-Entry (PS100001)
E. coli Selection:	Kanamycin (25 ug/mL)
ORF Nucleotide Sequence:	>RC208167 ORF sequence Red=Cloning site Blue=ORF Green=Tags(s)

TTTTGTAATACGACTCACTATAGGGCGGCCGGAATTCGTCGACTGGATCCGGTACCGAGGAGATCTGCC
GCC**CGATCGCC**

ATGGGAGGAAGGAAGATGGCGACAGATGAAGAAAATGTCTATGGTTTAGAAGAGAACGCTCAGTCCCGGC
AGGAGTCCACGCGGAGGCTCATCCTTGTGGGAGAACAGGGGCCGGAAGAGCGCCACTGGGAACAGCAT
CCTGGGCCAGAGACGGTCTTCTCCAGGCTGGGGCCACGTCTGTGACCAGGGCTGCACCAGGGCAGC
CGCAGGTGGGACAAGTCCACGTGGAAGTCGTGGACACTCCGGACATTTTCAGCTCCAAGTGTCCAAGA
CAGATCCTGGCTGTGAGGAGAGAGGTCACTGCTACCTGCTCTCGGCCCGGACCCACGCGCTGCTCCT
GGTGACCCAGTTGGGTCGGTTCACCGCCAGGACAGCAGCGGTGAGGCAGGTGAGGGACATGTTCCGGG
GAGGACGTCCTAAAATGGATGGTCATCGTCTTACCAGGAAGGAGGACCTGGCCGGGGGCTCCCTGCACG
ATTACGTGAGCAACACAGAGAACCAGGCGCTTGCAGGAGCTGGTGGCCGAGTGCAGGGGCGGGTCTGTGC
CTTTGATAACCGGGCCACCGCCGGGAGCAGGAAGCCAGGTGGAGCAGCTGCTGGGATGGTTCGAGGGC
TTGGTGTGGAGCACAAGGGCGCCATTACTCCAACGAGGTGTATGAGCTGGCGCAGGTGCTGCGCTGGG
CAGGCCCTGAGGAGCGGCTCCGGCGGGTGGCGGAGCGCTGCCAGCCAGGTGCAGAGGAGGCCATGGG
CGCCTGGCTGTGGCCCGGCTGTGGAAGTGGCTGAAGTCCCCAGGAGCTGGAGGCTGGCCTGGCCCTG
CTGCTGGGGGCGCGCTCCTGTCTGGGTGCTGCTCCACAGCGGTGGTCCGAGGCGGTTGCGGAGGTGCG
GGCCTGAC

ACGCGTACGCGGCCGCTCGAGCAGAACTCATCTCAGAAGAGGATCTGGCAGCAAATGATATCCTGGATT
ACAAGGATGACGACGATAAGGTTTAA



[View online »](#)

Protein Sequence: >RC208167 protein sequence
 Red=Cloning site Green=Tags(s)

MGGRKMATDEENVYGLEENAQSRQESTRRLILVGRTGAGKSATGNSILGQRRFFSRLGATSVTRACTTGS
 RRWDKCHVEVVDTPDIFSSQVSKTDPGCEERGHICYLLSAPGPHALLLVTLGRFTAQDQQAVRQVRDMFG
 EDVWKMMVIVFTRKEDLAGGSLHDYVSNENTRALRELVAECGGRVCAFDNRATGREQEAQVEQLLMVEG
 LVLEHKGAHYSNEYVELAQVLRWAGPEERLRRVAERVAARVQRRPWGAWLSARLWKWLKSPRSWRLGLAL
 LLGGALLFWVLLHRRWSEAVAEPD

TRTRPLEQKLISEEDLAANDILDYKDDDDKV

Chromatograms: https://cdn.origene.com/chromatograms/mk6348_a08.zip

Restriction Sites: SgfI-MluI

Cloning Scheme:



ACCN: NM_130759

ORF Size: 918 bp

OTI Disclaimer: The molecular sequence of this clone aligns with the gene accession number as a point of reference only. However, individual transcript sequences of the same gene can differ through naturally occurring variations (e.g. polymorphisms), each with its own valid existence. This clone is substantially in agreement with the reference, but a complete review of all prevailing variants is recommended prior to use. [More info](#)

OTI Annotation: This clone was engineered to express the complete ORF with an expression tag. Expression varies depending on the nature of the gene.

Components: The ORF clone is ion-exchange column purified and shipped in a 2D barcoded Matrix tube containing 10ug of transfection-ready, dried plasmid DNA (reconstitute with 100 ul of water).

Reconstitution Method:

1. Centrifuge at 5,000xg for 5min.
2. Carefully open the tube and add 100ul of sterile water to dissolve the DNA.
3. Close the tube and incubate for 10 minutes at room temperature.
4. Briefly vortex the tube and then do a quick spin (less than 5000xg) to concentrate the liquid at the bottom.
5. Store the suspended plasmid at -20°C. The DNA is stable for at least one year from date of shipping when stored at -20°C.

RefSeq: [NM_130759.4](#)

RefSeq Size: 4430 bp

RefSeq ORF: 921 bp

Locus ID: 170575

UniProt ID: [Q8WWP7](#)

Cytogenetics: 7q36.1

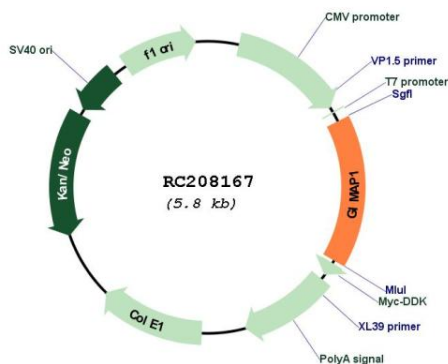
Domains: AIG1

Protein Families: Transmembrane

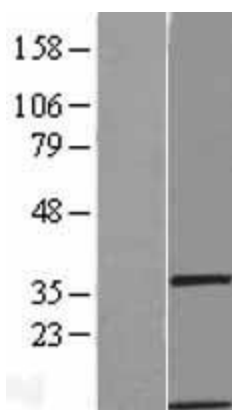
MW: 34.4 kDa

Gene Summary: This gene encodes a protein belonging to the GTP-binding superfamily and to the immun-associated nucleotide (IAN) subfamily of nucleotide-binding proteins. In humans, the IAN subfamily genes are located in a cluster at 7q36.1. This gene is thought to be involved in the differentiation of T helper (Th) cells of the Th1 lineage, and the related mouse gene has been shown to be critical for the development of mature B and T lymphocytes. Read-through transcription exists between this gene and the downstream GIMAP5 (GTPase, IMAP family member 5) gene. [provided by RefSeq, Dec 2010]

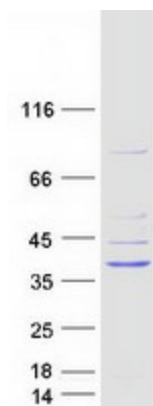
Product images:



Circular map for RC208167



Western blot validation of overexpression lysate (Cat# [LY408926]) using anti-DDK antibody (Cat# [TA50011-100]). Left: Cell lysates from untransfected HEK293T cells; Right: Cell lysates from HEK293T cells transfected with RC208167 using transfection reagent MegaTran 2.0 (Cat# [TT210002]).



Coomassie blue staining of purified GIMAP1 protein (Cat# [TP308167]). The protein was produced from HEK293T cells transfected with GIMAP1 cDNA clone (Cat# RC208167) using MegaTran 2.0 (Cat# [TT210002]).