

Product datasheet for **RC208166**

PACRG (NM_001080379) Human Tagged ORF Clone

Product data:

Product Type:	Expression Plasmids
Product Name:	PACRG (NM_001080379) Human Tagged ORF Clone
Tag:	Myc-DDK
Symbol:	PACRG
Synonyms:	GLUP; HAK005771; PACRG2.1; PARK2CRG
Mammalian Cell Selection:	Neomycin
Vector:	pCMV6-Entry (PS100001)
E. coli Selection:	Kanamycin (25 ug/mL)
ORF Nucleotide Sequence:	>RC208166 ORF sequence Red=Cloning site Blue=ORF Green=Tags(s)

TTTTGTAATACGACTCACTATAGGGCGCCGGGAATTCGTCGACTGGATCCGGTACCGAGGAGATCTGCC
GCC**CGATCGCC**

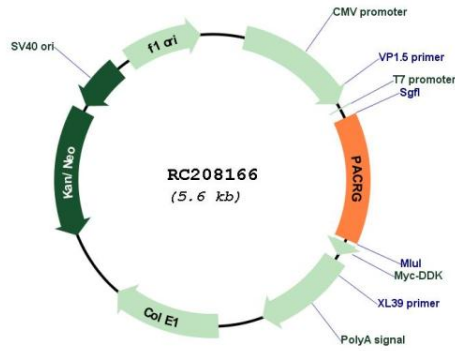
ATGGTGGCAGAAAAGAGACCCTGAGCTTAAACAAATGCCAGACAAGATGCCGAAGAGGACCAAGCTGC
TGGCACAACAGCCGCTCCCGGTGCACCAGCCTCACTCTCTGGTTTCTGAGGGTTTCACAGTCAAAGCCAT
GATGAAAACCTCAGTCGTGAGAGGCCCTCCAGCTGCAGGGCATTAAAGAAAGACCAACCAAGCCACA
GCATTTTGAAAATCTATGAGCGAGGTGACTTCCCAATTGCCCTTGAGCATGATTCGAAAGGAAACAAAA
TCGCCTGGAAGGTAGAAATTGAGAAGCTGGATTACCATCATTATCTGCCTCTGTTTTTGTATGGGCTTTG
TGAAATGACATTTCCCTATGAGTTTTTGTCTCGGCAAGGAATCCACGACATGCTGGAACACGGTGGGAAC
AAGATCCTACCTGTCTTCCACAGCTCATTATCCCGATAAAAAATGCCTTGAACCTCCGAAACCGACAGG
TCATCTGTGCACTCTCAAGGTCTCCAGCATCTGGTTGTGTCAGCTGAGATGGTGGGCAAGGCCTTGGT
GCCTTATTACCGTCAAATCCTCCCTGTCTGAACATCTTTAAGAATATGAATGTGAACCTCCGGAGACGGC
ATTGACTACAGCCAGCAGAAGAGGGAGAACATTGGGGACTTGATCCAGGAGACACTGGAGGCCTTCGAGC
GCTACGGAGGAGAAAATGCCTTTATCAACATTAAGTACGTGGTCCCAACCTACGAGTCTTGCTTGCTAA
C

ACGCGTACGCGGCCGCTCGAGCAGAACTCATCTCAGAAGAGGATCTGGCAGCAAATGATATCCTGGATT
ACAAGGATGACGACGATAAGGTTTAA

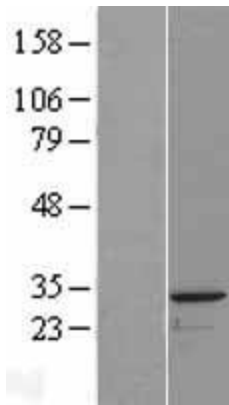


Reconstitution Method:	<ol style="list-style-type: none">1. Centrifuge at 5,000xg for 5min.2. Carefully open the tube and add 100ul of sterile water to dissolve the DNA.3. Close the tube and incubate for 10 minutes at room temperature.4. Briefly vortex the tube and then do a quick spin (less than 5000xg) to concentrate the liquid at the bottom.5. Store the suspended plasmid at -20°C. The DNA is stable for at least one year from date of shipping when stored at -20°C.
RefSeq:	NM_001080379.1 , NP_001073848.1
RefSeq Size:	1627 bp
RefSeq ORF:	774 bp
Locus ID:	135138
UniProt ID:	Q96M98
Cytogenetics:	6q26
Protein Families:	Druggable Genome
MW:	29.3 kDa
Gene Summary:	<p>This gene encodes a protein that is conserved across metazoans. In vertebrates, this gene is linked in a head-to-head arrangement with the adjacent parkin gene, which is associated with autosomal recessive juvenile Parkinson's disease. These genes are co-regulated in various tissues and they share a bi-directional promoter. Both genes are associated with susceptibility to leprosy. The parkin co-regulated gene protein forms a large molecular complex with chaperones, including heat shock proteins 70 and 90, and chaperonin components. This protein is also a component of Lewy bodies in Parkinson's disease patients, and it suppresses unfolded Pael receptor-induced neuronal cell death. Multiple transcript variants encoding different isoforms have been found for this gene. [provided by RefSeq, Jul 2008]</p>

Product images:



Circular map for RC208166



Western blot validation of overexpression lysate (Cat# [LY421606]) using anti-DDK antibody (Cat# [TA50011-100]). Left: Cell lysates from untransfected HEK293T cells; Right: Cell lysates from HEK293T cells transfected with [RC222240] using transfection reagent MegaTran 2.0 (Cat# [TT210002]).