

Product datasheet for **RC208158**

PPP1R3B (NM_024607) Human Tagged ORF Clone

Product data:

| | |
|---------------------------|---|
| Product Type: | Expression Plasmids |
| Product Name: | PPP1R3B (NM_024607) Human Tagged ORF Clone |
| Tag: | Myc-DDK |
| Symbol: | PPP1R3B |
| Synonyms: | GL; PPP1R4; PTG |
| Mammalian Cell Selection: | Neomycin |
| Vector: | pCMV6-Entry (PS100001) |
| E. coli Selection: | Kanamycin (25 ug/mL) |
| ORF Nucleotide Sequence: | >RC208158 ORF sequence Red=Cloning site Blue=ORF Green=Tags(s) |

TTTTGTAATACGACTCACTATAGGGCGGCCGGAATTCGTCGACTGGATCCGGTACCGAGGAGATCTGCC
GCC**CGATCGCC**

ATGATGGCTGTGGACATCGAGTACAGATACAACCTGCATGGCTCCTTCCTTGGCCAAGAGAGGTTTGCCT
TTAAGATCTACCAAAGCCAGCAAACCACTGAGGCCTTGATTTCAGCTGAGCAGCAAGAATGAAGCCAG
TGAATGGTGGCCCCGGCTGTCCAGGAGAAGAAGGTGAAAAGCGGGTGTCTTTGCAGACAACCAGGGG
CTGGCCCTGACAATGGTCAAAGTGTCTCGGAATTCGATGACCCGCTAGATATGCCATTCACATCACCC
AGCTCCTAGACAACATTGTGAGCTTGACGACAGCAGAGAGCGAGAGCTTTGTTCTGGATTTTCCCAGCC
CTCTGCAGATTACTTAGACTTTAGAAATCGACTTCAGGCCGACCAGTCTGCCTTGAGAAGTGTGTGCTC
AAGGACAAGGCCATTGCAGGCACTGTGAAGTTTCAAGACCTCGCATTTGAGAAGCCGTGAAAATAAGGA
TGACGTTTCGACACCTGGAAGAGCTACACAGACTTTCCTTGTCAGTACGTGAAGGACACTTATGCCGGTTC
AGACAGGGACACGTTCTCCTTCGACATCAGCTTGCCCGAGAAGATTTCAGTCTTATGAAAGAATGGAGTTT
GCTGTGTACTACGAGTGAATGGACAGACGACTGGGACAGCAACAGAGGCAAGAAGTATAGGATCATCC
GGGCTGAGTTAAAATCTACCCAGGGAATGACCAAGCCCCACAGTGGACCGGATTTGGGAATATCCTTTGA
CCAGTTTCGGAAGCCCTCGGTGTTCTATGGTCTGTTTCCAGAGTGGCCAAGTTACTTAGGATATGAAAAG
CTAGGGCCCTACTAC

ACGCGTACGCGGCCGCTCGAGCAGAAACTCATCTCAGAAGAGGATCTGGCAGCAAATGATATCCTGGATT
ACAAGGATGACGACGATAAGGTTTAA



[View online »](#)

Protein Sequence: >RC208158 protein sequence
 Red=Cloning site Green=Tags(s)

MMAVDIEYRYNCMAPSLRQERFAFKISPKPSKPLRPCIQLSSKNEASGMVAPAVQEKKVKKRVSFADNQG
 LALTMVKVFSEFDDPLDMPFNITELLDNIVSLTTAESEFVLDQSPQADYLDLDFRNRLQADHVCLNLCVL
 KDKAIAGTVKQNLAFEKTVKIRMTFDTWKSYPDFPCQYVKDITYAGSDRDTFSFDISLPEKIQSYERMEF
 AVYYECNGQTYWDSNRGKNYRIIRAELKSTQGMTKPHSGPDLGISFDQFGSPRCYGLFPEWPSYLGYEK
 LGPYY

TRTRPLEQKLISEEDLAANDILDYKDDDDKV

Chromatograms: https://cdn.origene.com/chromatograms/mk6089_h04.zip

Restriction Sites: SgfI-MluI

Cloning Scheme:



ACCN: NM_024607

ORF Size: 855 bp

OTI Disclaimer: The molecular sequence of this clone aligns with the gene accession number as a point of reference only. However, individual transcript sequences of the same gene can differ through naturally occurring variations (e.g. polymorphisms), each with its own valid existence. This clone is substantially in agreement with the reference, but a complete review of all prevailing variants is recommended prior to use. [More info](#)

OTI Annotation: This clone was engineered to express the complete ORF with an expression tag. Expression varies depending on the nature of the gene.

Components: The ORF clone is ion-exchange column purified and shipped in a 2D barcoded Matrix tube containing 10ug of transfection-ready, dried plasmid DNA (reconstitute with 100 ul of water).

Reconstitution Method:

1. Centrifuge at 5,000xg for 5min.
2. Carefully open the tube and add 100ul of sterile water to dissolve the DNA.
3. Close the tube and incubate for 10 minutes at room temperature.
4. Briefly vortex the tube and then do a quick spin (less than 5000xg) to concentrate the liquid at the bottom.
5. Store the suspended plasmid at -20°C. The DNA is stable for at least one year from date of shipping when stored at -20°C.

RefSeq: [NM_024607.4](#)

RefSeq Size: 5574 bp

RefSeq ORF: 858 bp

Locus ID: 79660

UniProt ID: [Q86XI6](#)

Cytogenetics: 8p23.1

Domains: CBM_21

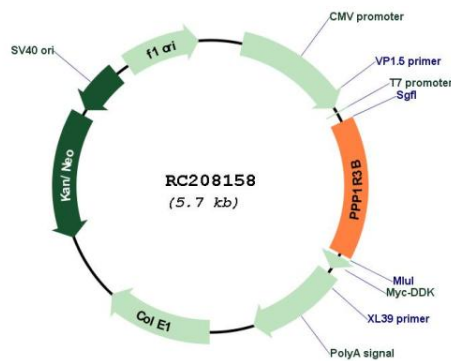
Protein Families: Druggable Genome, Phosphatase

Protein Pathways: Insulin signaling pathway

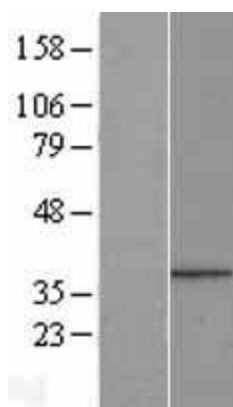
MW: 32.7 kDa

Gene Summary: This gene encodes the catalytic subunit of the serine/threonine phosphatase, protein phosphatase-1. The encoded protein is expressed in liver and skeletal muscle tissue and may be involved in regulating glycogen synthesis in these tissues. This gene may be involved in type 2 diabetes and maturity-onset diabetes of the young. Alternate splicing results in multiple transcript variants that encode the same protein.[provided by RefSeq, Jan 2011]

Product images:



Circular map for RC208158



Western blot validation of overexpression lysate (Cat# [LY411198]) using anti-DDK antibody (Cat# [TA50011-100]). Left: Cell lysates from untransfected HEK293T cells; Right: Cell lysates from HEK293T cells transfected with RC208158 using transfection reagent MegaTran 2.0 (Cat# [TT210002]).