

## Product datasheet for **RC208157**

### EMID1 (NM\_133455) Human Tagged ORF Clone

#### Product data:

Product Type:	Expression Plasmids
Product Name:	EMID1 (NM_133455) Human Tagged ORF Clone
Tag:	Myc-DDK
Symbol:	EMID1
Synonyms:	EMI5; EMU1
Mammalian Cell Selection:	Neomycin
Vector:	pCMV6-Entry (PS100001)
E. coli Selection:	Kanamycin (25 ug/mL)



[View online »](#)

**ORF Nucleotide Sequence:**

>RC208157 ORF sequence  
 Red=Cloning site Blue=ORF Green=Tags(s)

TTTTGTAATACGACTCACTATAGGGCGGCCGGGAATTCGTCGACTGGATCCGGTACCGAGGAGATCTGCC  
 GCC**CGCATCGCC**

ATGGGCGGCCCGGGCTTGGCGCTGCTCTCGCTCGGGCTCCTGCTCCGGGAGCGGGCTGCGTGGA  
 GCATCGGGGAGCTCCGTTCTCCGGACGCAGAACTGGTCTCCTATGTGGTGACCCGCACCATCTCATG  
 CCATGTGCAGAATGACACCTACCTTCAGCGAGTCTGCAGAACTGCCCTGGCCATGAGCTGTCCGGG  
 AGCAGCTACAGAAGTGGTGAGACCCACATACAAGGTGATGTACAAGATAGTGACCGCCCGTGAGTGGA  
 GGTGCTGCCCTGGGCACTCAGGAGTGAAGTGCAGGTTCTCTGCTCCTTGAGGCCAT  
 GTGGTCCGGCAGTACCATGCGCGGATGGCGCTTCGGCCACAGCCTTCTCAGGTTGTCTCAACTGCAGC  
 AAAGTGTGAGAGTGCAGAGCGGCTGAAGGTGCTGGAGGCCAAGATGACCATGTGACTGTCATAGAGC  
 AGCCAGTACCTCAACACCAGCTACCCCTGAGGACCTGCCCGCTCTGGGGTCCCCCTCTGCCAGGG  
 CAGCCCCGGAGATGGAGGCTCCAGGACCAAGTGGTGTGGGGGCTTCCGGGCCACCGGCCCAAG  
 GGAGATGCCGGCAGTCCGGGCCCAATGGGGATGAGAGGCCACCAAGTCCACAGGGCCCCCAGGGAGCC  
 CTGGCCGGGCTGGAGCTGTGGGCACCCCTGGAGAGAGGGGACCTCCTGGGCCACCAAGGGCTCCTGGCC  
 CCCTGGGCCCCAGCCCTGTTGGGCCACCCATGCCCGATCTCCAGCATGGAGACCCATTGCTGTCC  
 AACACCTTCACTGAGACCAACAACCACTGGCCCCAGGGACCCACTGGGCTCCAGGCCCTCAGGGCCCA  
 TGGGTCCCCCTGGGCTCCTGGCCCCACAGGTGTCCCTGGGAGTCTGGTACATAGGACCCCAAGGCC  
 CACTGGACCCAAAGGAATCTCTGGCCACCAAGGAGAGAAGGGCGAGAGAGACTGCGTGGGAGCCTGGC  
 CCCCAGGCTCTGCTGGCAGCGGGGGAACCTGGCCTAAGGGAGACCTGGTGAAGAGCCACTGGG  
 GGGAGGGTTGCACCAGCTACGCGAGGCTTTGAAGATTTAGCTGAGAGGGTTTTAATCTTGAAACAAT  
 GATTGGGCTCTATGAGCCAGAGCTGGGGTCTGGGGCGGGCCCTGCCGGCACAGGCACCCCAAGCCTCCT  
 CGGGCAAGAGGGGCGGACATGCAACCAACTACCGGATCGTGGCCCCAGGAGCCGGGACGAGAGAGGC

**ACGCGT**ACGCGGCCGCTCGAGCAGAACTCATCTCAGAAGAGGATCTGGCAGCAATGATATCCTGGATT  
 ACAAGGATGACGACGATAAGGTTTAA

**Protein Sequence:**

>RC208157 protein sequence  
 Red=Cloning site Green=Tags(s)

MGGPRAWALLCLGLLLPGGGAWSIGAAPFSGRRNWCYSYVVTRTISCHVQNGTYLQRVLQNCWPWMSCPG  
 SSYRTVVRPTYKVMYKIVTAREWRCCPGHSGVSCSEEVAGSSASLEPMWSGSTMRRMALRPTAFSGCLNCS  
 KVSELTERLKVLEAKMMLTVIEQPVPPTPATPEDPAPLWGPAPAQSPGDGGLQDQVGAWLPGPTGPK  
 GDAGSRGPMGMRGPPGPPGPPGSPGRAGAVGTPGERGPPGPPGPPGPPGPPAPVGPAPHARISQHGDP  
 LLNTFTETNNHWPQGPTGPPGPPGPPGPPGPPGPTGVPSPGHIGPPGPTGPKGISGHPGEKGERGLR  
 GEPG PQGSAGQRGEPGPKGDPGEKSHWGEGLHQLREALKILAERVLILETMIGLYEPELGSAGPAGTGT  
 PSLLRGKRGGHATNYRIVAPRSRDERG

**TR**TRPLEQKLISEEDLAANDILDYKDDDDKV

**Chromatograms:**

[https://cdn.origene.com/chromatograms/mk6347\\_b03.zip](https://cdn.origene.com/chromatograms/mk6347_b03.zip)

**Restriction Sites:**

SgfI-MluI

**Cloning Scheme:**


**ACCN:** NM\_133455

**ORF Size:** 1329 bp

**OTI Disclaimer:** The molecular sequence of this clone aligns with the gene accession number as a point of reference only. However, individual transcript sequences of the same gene can differ through naturally occurring variations (e.g. polymorphisms), each with its own valid existence. This clone is substantially in agreement with the reference, but a complete review of all prevailing variants is recommended prior to use. [More info](#)

**OTI Annotation:** This clone was engineered to express the complete ORF with an expression tag. Expression varies depending on the nature of the gene.

**Components:** The ORF clone is ion-exchange column purified and shipped in a 2D barcoded Matrix tube containing 10ug of transfection-ready, dried plasmid DNA (reconstitute with 100 ul of water).

- Reconstitution Method:**
1. Centrifuge at 5,000xg for 5min.
  2. Carefully open the tube and add 100ul of sterile water to dissolve the DNA.
  3. Close the tube and incubate for 10 minutes at room temperature.
  4. Briefly vortex the tube and then do a quick spin (less than 5000xg) to concentrate the liquid at the bottom.
  5. Store the suspended plasmid at -20°C. The DNA is stable for at least one year from date of shipping when stored at -20°C.

**RefSeq:** [NM\\_133455.4](#)

**RefSeq Size:** 2133 bp

**RefSeq ORF:** 1332 bp

**Locus ID:** 129080

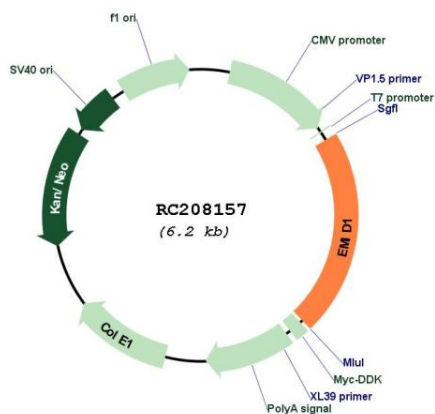
**UniProt ID:** [Q96A84](#)

**Cytogenetics:** 22q12.2

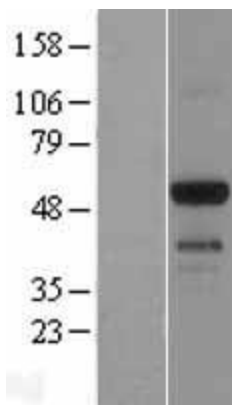
**Protein Families:** Secreted Protein, Transmembrane

**MW:** 45.4 kDa

**Product images:**



Circular map for RC208157



Western blot validation of overexpression lysate (Cat# [LY408793]) using anti-DDK antibody (Cat# [TA50011-100]). Left: Cell lysates from untransfected HEK293T cells; Right: Cell lysates from HEK293T cells transfected with RC208157 using transfection reagent MegaTran 2.0 (Cat# [TT210002]).